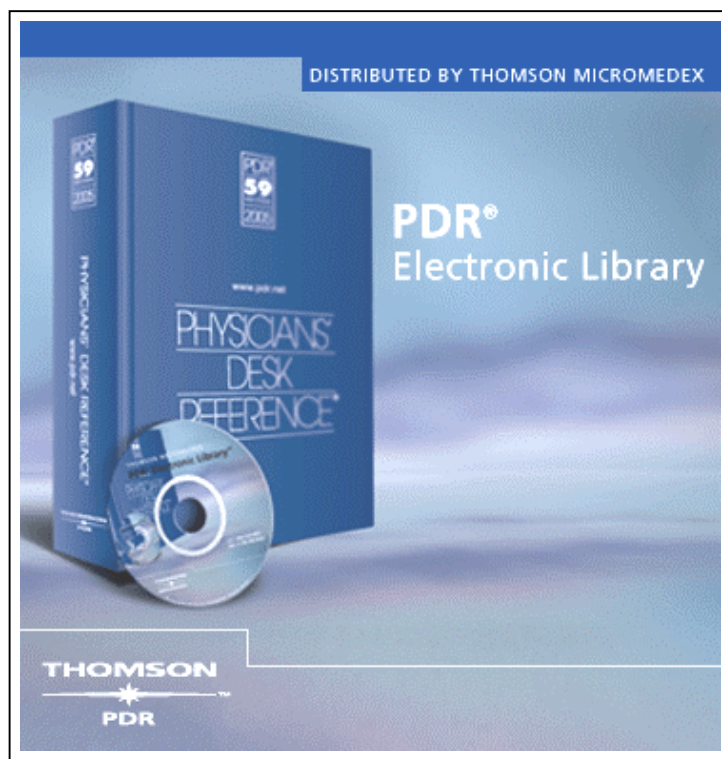


Distributed by: T H O M S O N M I C R O M E D E X

# INSTALLATION INSTRUCTIONS

*PDR<sup>®</sup> Electronic Library*

---



---

VERSION A  
RELEASE 2005.1

**THOMSON**  
—★—™  
**PDR**

Copyright © 2005 Thomson PDR. All rights reserved.

This manual, as well as the data and software implementation described in it, is furnished under license and may be used or copied only in accordance with the terms of such license. The content of this manual is furnished for informational use only, is subject to change without notice, and should not be construed as a commitment on the part of Thomson PDR or Thomson MICROMEDEX.

Except as permitted by such license, no part of this publication may be reproduced, stored in a retrieval system, or transmitted, in any form or by any means, electronic, mechanical, recording, or otherwise, without the prior written permission of Thomson PDR.

The data and software application, is a tool intended to be used by trained professionals only. The data and the software application is not a substitute for the professional judgment of trained professionals. Thomson PDR and Thomson MICROMEDEX assume no liability for any error or inaccuracies that may appear in this manual. Thomson PDR and Thomson MICROMEDEX MAKES NO WARRANTIES WITH RESPECT TO THIS MANUAL AND DISCLAIMS ANY IMPLIED WARRANTIES OF MERCHANTABILITY AND FITNESS FOR A PARTICULAR PURPOSE.

MICROMEDEX<sup>®</sup>, Physicians' Desk Reference<sup>®</sup>, and PDR<sup>®</sup> are trademarks of Thomson Healthcare Inc. All other trademarks are the property of their respective owner.

U.S. Government Customers:

The Products are provided to the Federal government and its agency with RESTRICTED RIGHTS. USE, DUPLICATION OR DISCLOSURE BY THE GOVERNMENT IS SUBJECT TO RESTRICTIONS SET FORTH IN SUB-PARAGRAPH (c)(1)(ii) OF THE RIGHTS IN TECHNICAL DATA AND COMPUTER SOFTWARE CLAUSE AT DFARS 252.227-7013 OR SUB-PARAGRAPHS (c)(1) O R (2) OF THE COMMERCIAL COMPUTER SOFTWARE-RESTRICTED RIGHTS AT 48 CFR 52.227-19, AS APPLICABLE. CONTRACTOR/MANUFACTURER IS THOMSON MICROMEDEX, 6200 S. Syracuse Way, Suite 300, Greenwood Village, Colorado 80111-4740, USA.

# Table of Contents

**THE PDR® ELECTRONIC LIBRARY ..... 4**

    HOW TO CONTACT THOMSON PDR ..... 4

    SYSTEM REQUIREMENTS ..... 4

    INSTALL THE PDR® ELECTRONIC LIBRARY ..... 5

        Accessing the PDR® Electronic Library ..... 7

# The PDR<sup>®</sup> Electronic Library

The PDR<sup>®</sup> Electronic Library can save hours of tedious research, answer tough questions with unparalleled speed, and automatically screen thousands of pages of text to deliver the results you need. The core of the system, the PDR Library database, includes the complete text of three comprehensive pharmaceutical references - Physicians' Desk Reference<sup>®</sup>, PDR for Nonprescription Drugs and Dietary Supplements<sup>™</sup>, and PDR for Ophthalmic Medicines<sup>™</sup>. A fast, intuitive retrieval system makes it easy to find any drug in a flash.

## How to Contact Thomson PDR

Technical support for the PDR Electronic Library is provided by our Customer Support department:

***Toll-Free Phone Number (within US & Canada):***

1-888-632-9998

***International:***

+1 201-358-7200

***E-mail address:***

PDR.CustomerService@Thomson.com

***Hours of Operation:***

*Monday through Thursday ... 8:30 a.m. to 8:00 p.m. (EST)*

*Friday ..... 9:30 a.m. to 8:00 p.m. (EST)*

Information on the wide range of products available from Thomson Healthcare is also available at our site on the World Wide Web: (<http://www.PDRbookstore.com/>).

## System Requirements

- Pentium<sup>®</sup> class Processor
- Any Microsoft Windows<sup>®</sup> version currently supported by Microsoft\* (Thomson MICROMEDEX develops and tests under Windows NT, 2000 and XP)
- 32 MB RAM
- Browser: Microsoft Internet Explorer 5.5 or higher
- Disk Space Required:  
450 MB

To access the PDR Electronic Library application, users must be designated as "Super Users" (defined in Microsoft Windows operating system security).

## Install the PDR® Electronic Library

**Note:** Close or end all other programs that are open or running on your PC during the entire installation

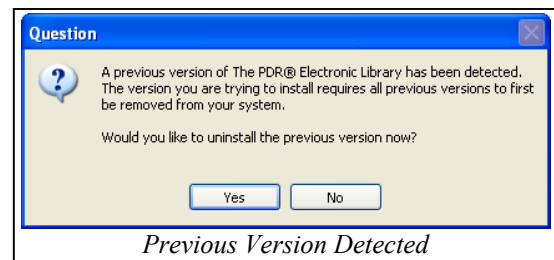
### Start the PDR Installation

1. Insert the CD in the CD-ROM drive.  
Press **Start** → **Run...** from the Task Bar.  
Type: **D:\SETUP** then click **OK**. (Substitute the appropriate drive letter if D:\ is not your CD-ROM drive).

2. **Uninstall previous versions:**

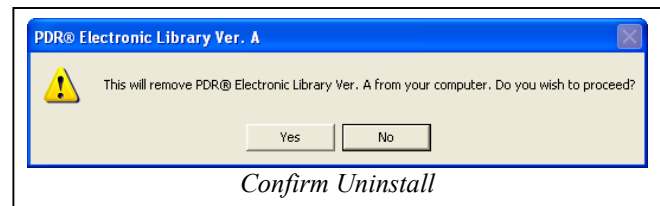
***If you are a new customer, skip to step #3.***

If you are a current subscriber installing an update release, you will see the “*Question*” screen. To successfully install the current version of the PDR Electronic Library, you must first remove any previous version.

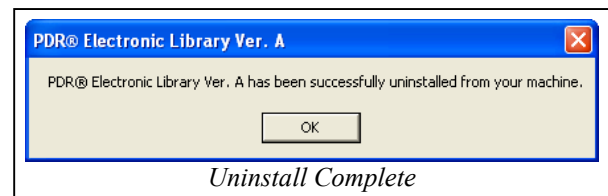


Press **Yes** to begin the Uninstall process.

Press **Yes** to confirm.



When you receive the message, “*PDR® Electronic Library Ver. A has been successfully uninstalled from your machine*”, click **OK**.

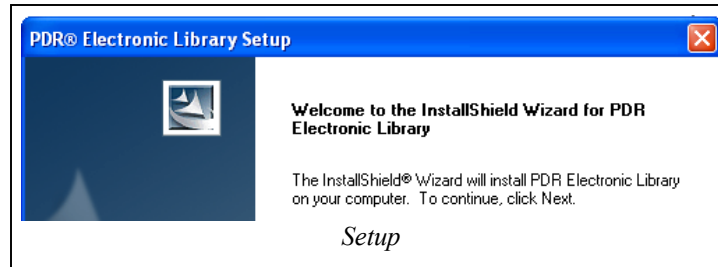


If the InstallShield® window does not appear automatically, click on the icon in your task list to bring it to the front of your desktop

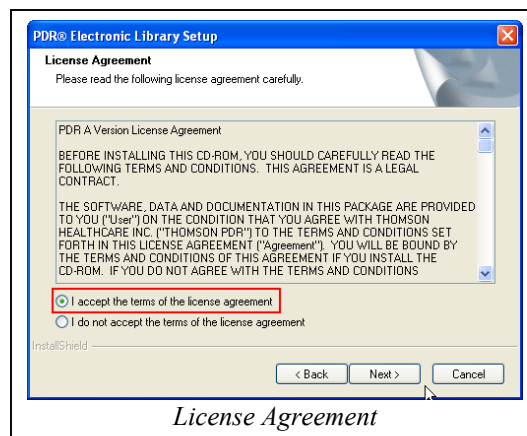


**Continue with the installation of the current PDR Electronic Library:**

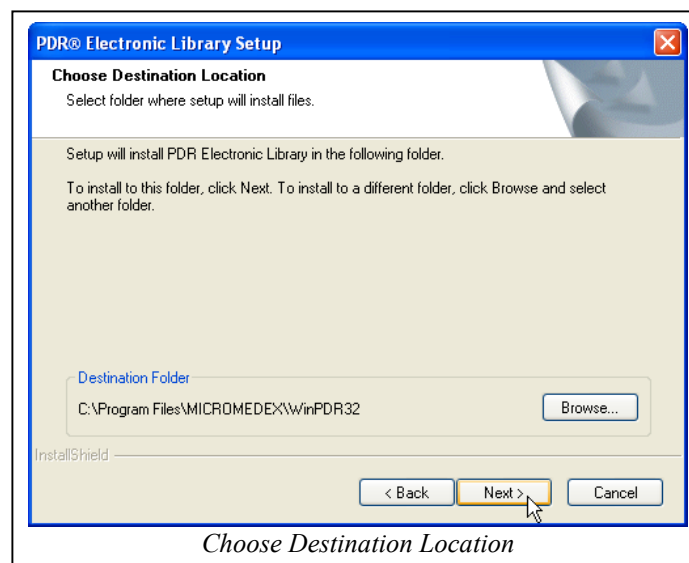
3. **Install the program:** From the *PDR<sup>®</sup> Electronic Library Setup* screen, click **Next >**.



4. **License Agreement:** Read and accept the terms of the *License Agreement*. Click the "I accept the terms of the license agreement" then click **Next >** to continue the installation.



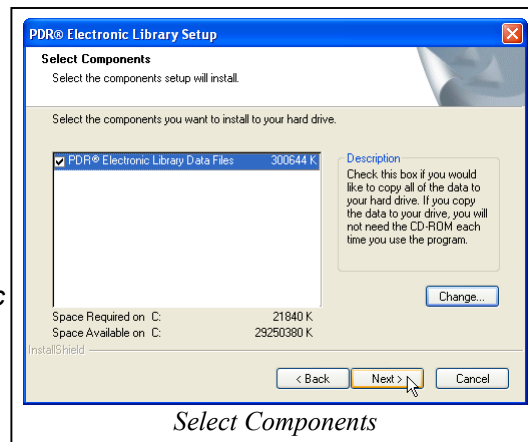
5. **Choose Destination Location:** Click **Next >** to use the default Folder or **Browse...** to choose a different destination folder.



## 6. Select Components

To install the PDR<sup>®</sup> data to your hard drive – Verify that the *PDR<sup>®</sup> Electronic Library Data Files* checkbox is selected (checked) and then click **Next >**. This method will allow you to run the program without the CD-ROM in the CD drive.

If space is not available to install the data to your hard drive, remove the checkmark from the *PDR<sup>®</sup> Electronic Library Data Files* checkbox then click **Next >**. This method will require you to have the PDR<sup>®</sup> CD-ROM in the CD-ROM drive when running the program.



Select Components

## 7. Select Program Folder

The PDR<sup>®</sup> Electronic Library is the default program folder for the program. Click **Next >** to accept this name, or type a different name in the Program Folders field.



Select Program Folder

8. *Start Copying Files* (not pictured): Review your current settings to verify your choices. Go **Back** if changes are necessary, otherwise click **Next >** to continue.

9. When the PDR<sup>®</sup> Electronic Library has completed the installation, you will be presented with either: the *InstallShield Wizard Complete* screen (Click **Finish**)

- or -



Complete

a prompt for a re-boot of your PC (Re-booting when prompted is recommended).

**This completes the PDR<sup>®</sup> Electronic Library installation.**

## Accessing the PDR<sup>®</sup> Electronic Library

If you accepted the default destination location:

**Start → Programs → MICROMEDEX → PDR<sup>®</sup> Electronic Library → PDR<sup>®</sup> Electronic Library**

- or - double-click the PDR Electronic Library desktop icon.

