

System Prerequisites

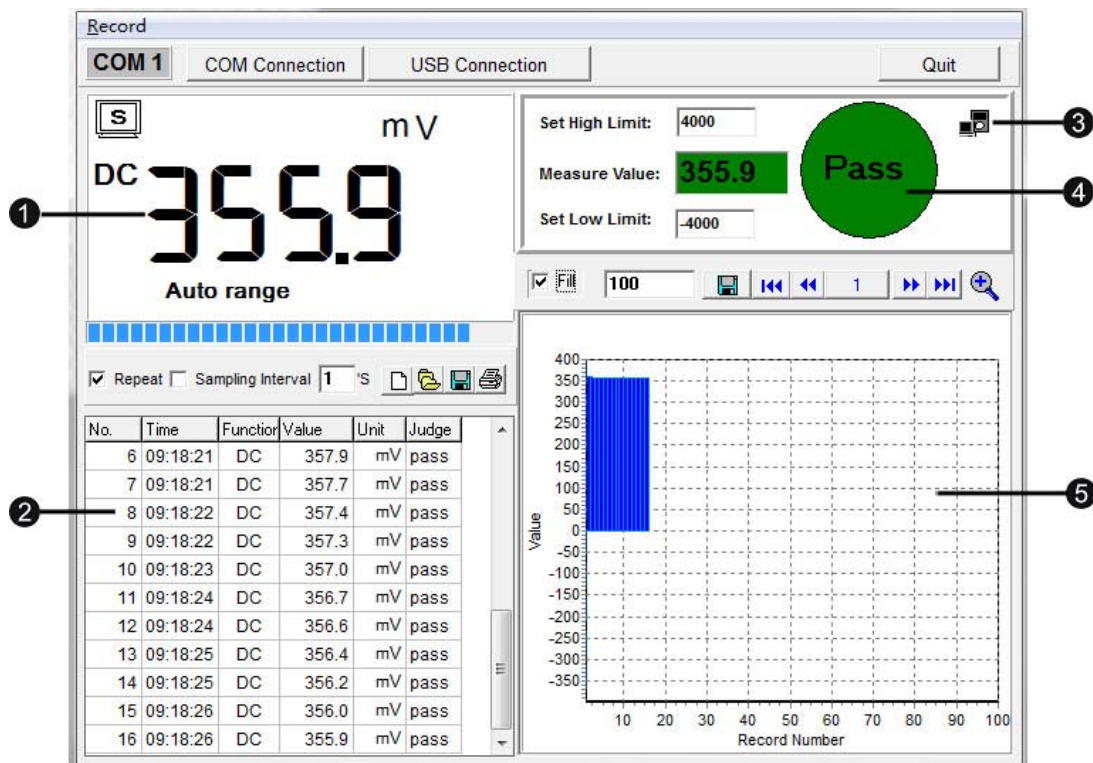
Recommended configuration


Processor	Pentium® 4 or higher with support of all customary operating systems
Operating system	Microsoft Windows® 2000 / XP / Vista / Win7
Memory	512 MB RAM or higher
Monitor	VGA (1024 x 768)
Drive	CD-ROM
Input device	Mouse or compatible
Interface	USB for data transmission

Install 72-10415 Software

- Insert the provided CD disk into CD-ROM drive.
- Double-click “72-10415_VX.XX.exe” (X can be 0 to 9 or blank, indicating the software version)
- The pop-up windows will guide you through the program setup process.

Main Screen




- 1 Main display screen of measurement
- 2 Secondary display screen for measurement data
- 3  Blinking indicates 72-10415 is connected to the software
- 4 Data Comparison
- 5 Measurement data in graph

Using Program

COM Connection

USB Connect

button enables you to connect to 72-10415 thermometer and start measurement. Click “USB Connect”  and

is blinking indicates 72-10415 Thermometer is successfully connected to the PC and 72-10415 Thermometer will automatically start taking measurements. Primary display

screen shows current measurement temperatures, secondary display screen shows all measurement data.

Exit

Exit and close the program

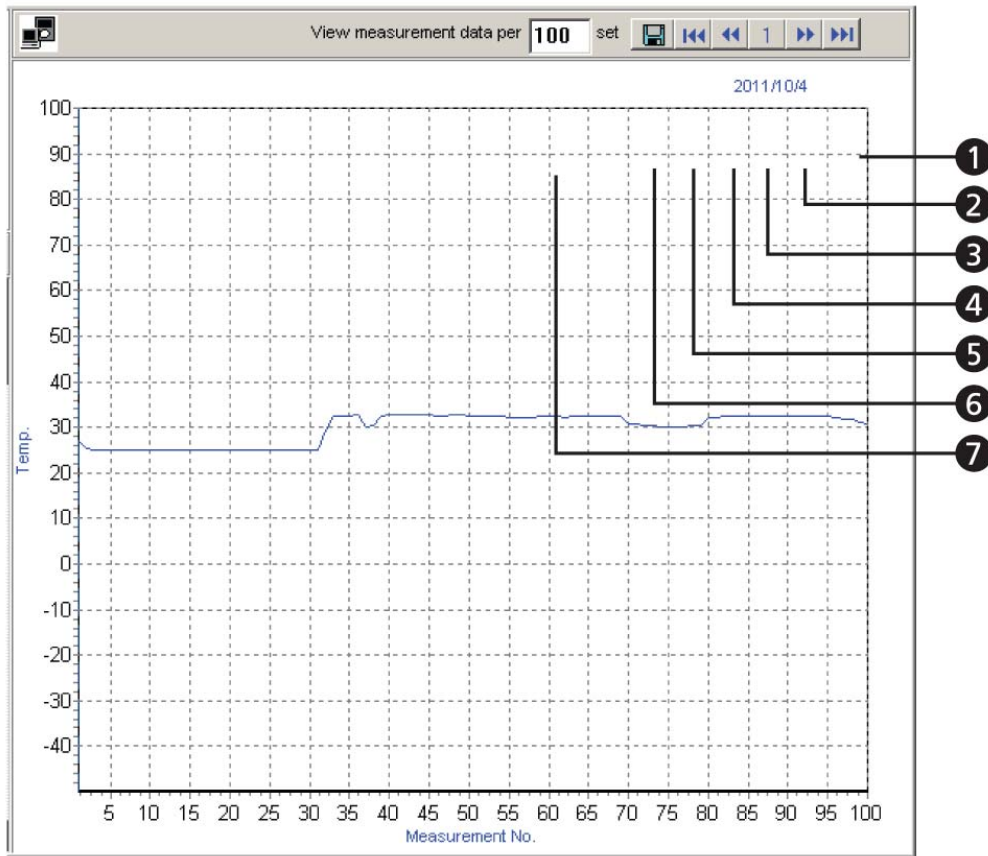
No.	Time	Function	Value	Unit	Judge
1	09:46:49	DC	177.1	mV	pass
2	09:46:50	DC	177.0	mV	pass
3	09:46:51	DC	176.9	mV	pass
4	09:46:51	DC	176.9	mV	pass
5	09:46:52	DC	176.9	mV	pass
6	09:46:52	DC	176.9	mV	pass
7	09:46:53	DC	176.9	mV	pass
8	09:46:54	DC	176.9	mV	pass
9	09:46:54	DC	176.8	mV	pass
10	09:46:55	DC	176.8	mV	pass
11	09:46:55	DC	176.7	mV	pass

- 1 Print data
- 2 Save data (*.txt, *.xls, *.xml)
- 3 Open files (*.txt, *.xls, *.xml)
- 4 Deleting current data and create a new data.

Repeat: Tick to display every measurement with the interval you set. Un-tick “Repeat”, the secondary display screen will only show measurement result that is different from the last measured temperature. The graph display will show complete measurement result in graphics despite “Repeat” is ticked or un-ticked.

Sampling Interval allows you to set the sampling intervals of measurement (1 to 9999 seconds).

Note: when measurement data reaching to 10000 sets (measurement No.), a warning message will pop up and stop measurements. Save or clear the measurement data before continuing next measurements.



- 1 Last page
- 2 Next page
- 3 Current page
- 4 Previous page
- 5 First page
- 6 Save graph in current page as *.bmp
- 7 Set numbers of measurement data on graph display