

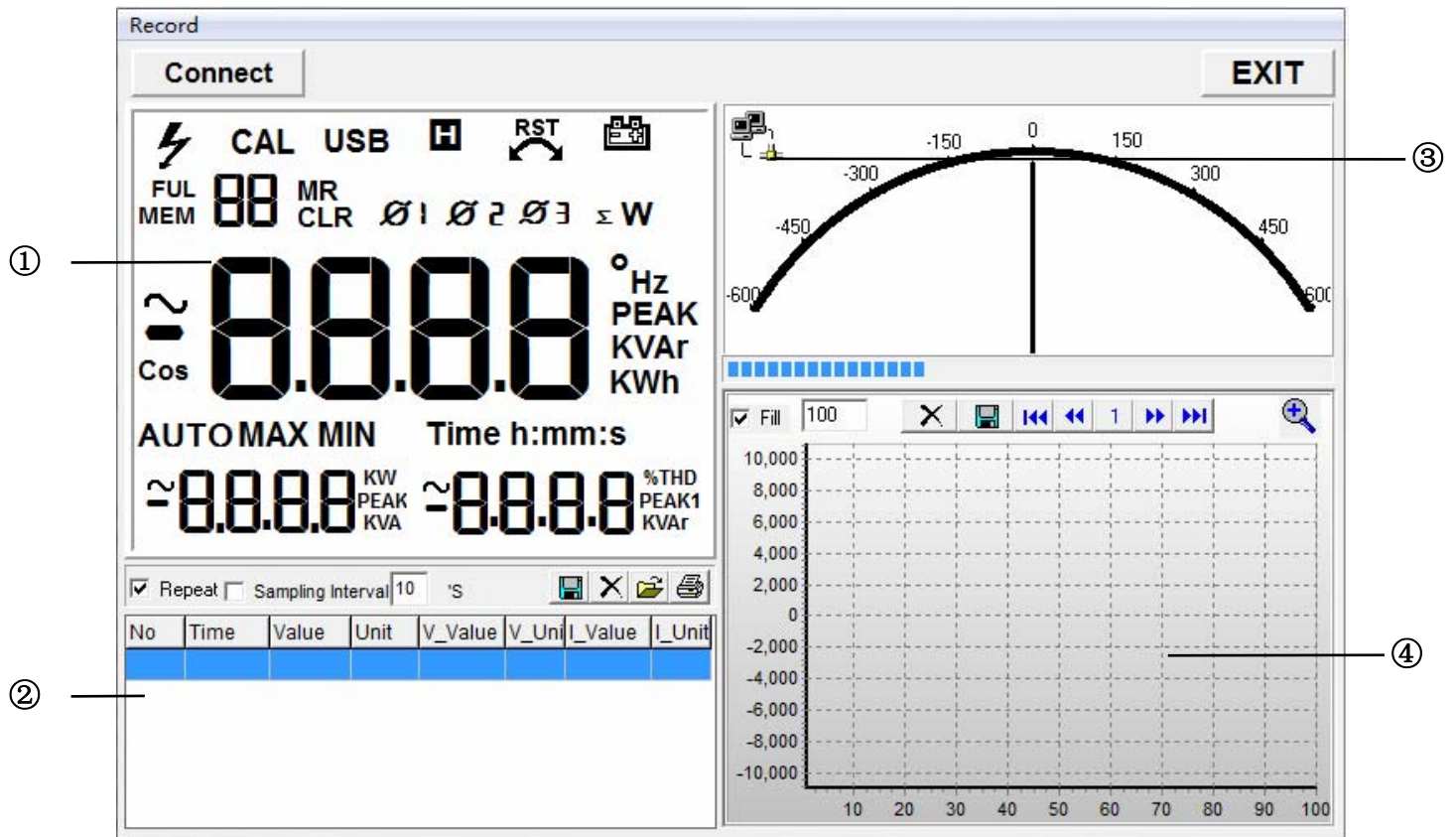
**System Prerequisites****Recommended configuration**

|                         |  |
|-------------------------|--|
| <b>Processor</b>        | Pentium® 4 or higher with support of all customary operating systems |
| <b>Operating system</b> | Microsoft Windows® 2000 / XP / Vista / Win7                          |
| <b>Memory</b>           | 512 MB RAM or higher   |
| <b>Monitor</b>          | VGA (1024 x 768)   |
| <b>Drive</b>            | CD-ROM   |
| <b>Input device</b>     | Mouse or compatible  |
| <b>Interface</b>        | USB for data transmission  |

**Install Software**


- Insert the provided CD disk into CD-ROM drive.
- Double-click “XXX\_VX.XX.exe” (X can be 0 to 9 or blank, indicating the software version)
- The pop-up windows will guide you through the program setup process.

## Main Screen




① Main display screen of measurement

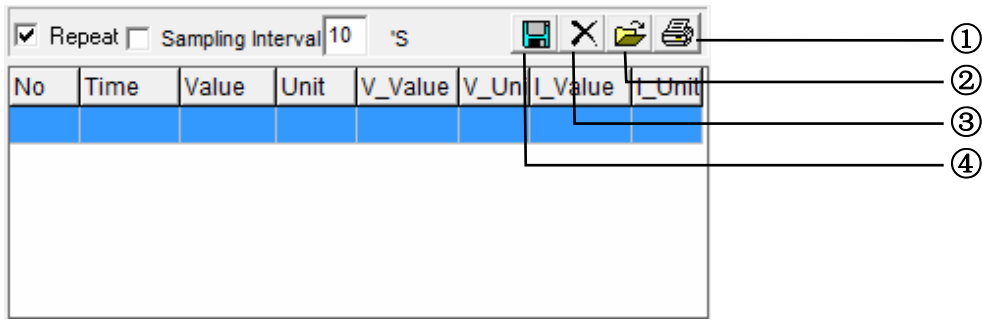
② Secondary display screen for measurement

③  Blinking indicates meter is connected to the software

④ Measurement data in graph

## Using Program

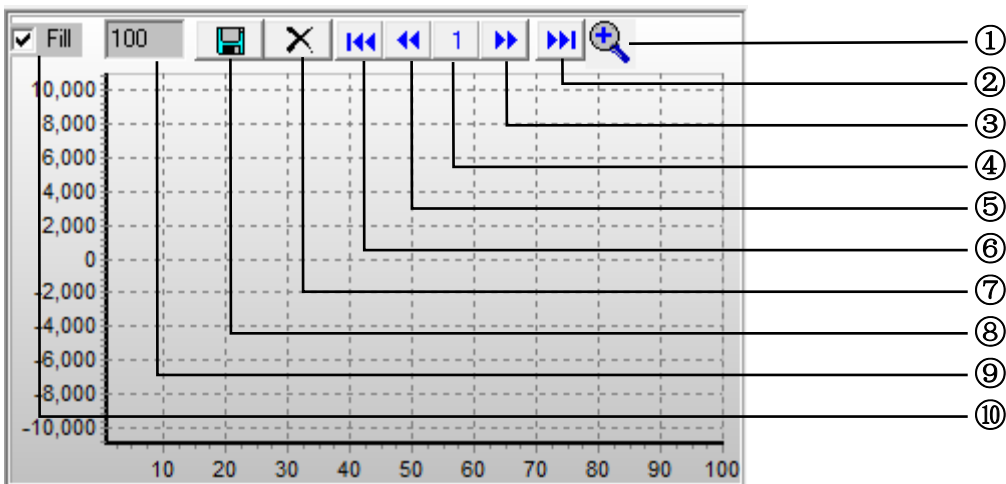
Click "Connect"  and is blinking indicates meter is successfully connected to the PC and meter will automatically start taking measurements. Primary display screen shows measurement, secondary display screen shows all measurement data.



- ① Print data
- ② Open files (\*.txt, \*.xls, \*.xml)
- ③ Deleting current data and create a new data.
- ④ Save data (\*.txt, \*.xls, \*.xml)

**Repeat:** Tick to display every measurement with the interval you set. Un-tick “Repeat”, the secondary display screen will only show measurement result that is different from the last measured temperature. The graph display will show complete measurement result in graphics despite “Repeat” is ticked or un-ticked.

**Sampling Interval** allows you to set the sampling intervals of measurement ( 1 to 9999 seconds).



- ① Zoom graphic
- ② Last page
- ③ Next page
- ④ Current page
- ⑤ Previous page
- ⑥ Fist page

- ⑦ Deleting current data and create a new data.
- ⑧ Save graph in current page as \*.bmp
- ⑨ Set numbers of measurement data on graph display
- ⑩ Fill or curve