

## Ø System Requirements(72-7732)

To use **72-7732 Interface Program**, you need the following hardware and software:

- ✚ An IBM PC or equivalent computer with 80586 or higher processor and 1024 x 768 pixel or better monitor.
- ✚ Microsoft **Windows 98/2000/ME/NT/XP/VISTA**
- ✚ At least 64MB of RAM.
- ✚ Can access to a local or a network CD-ROM.
- ✚ A free serial port and a usb port.
- ✚ A mouse or other pointing device supported by Windows.

## Ø Hardware install:

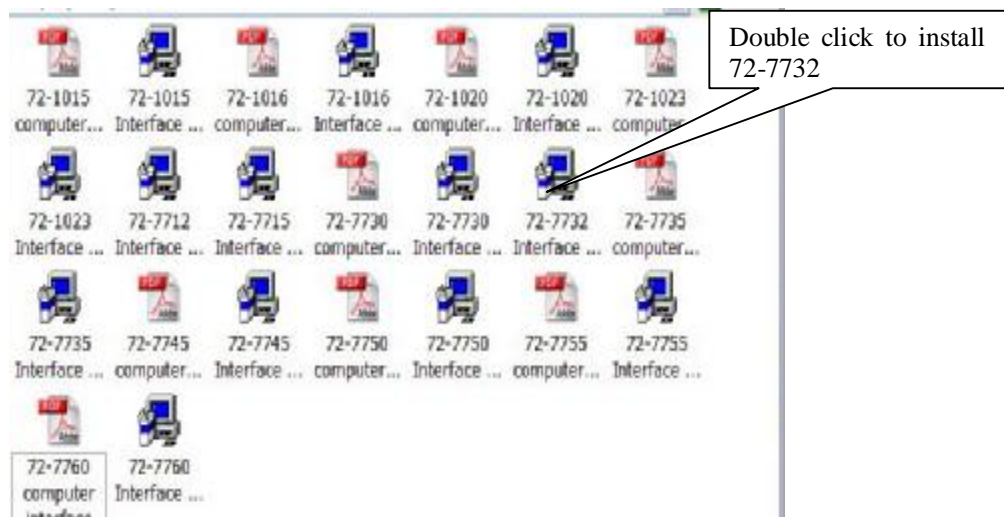
- ✚ If what to use is multimeter the RS-232s provide with the form connect a people's line, the RS-232 pick up a people line of red unauthorized biography lose the line to receive to carry to insert multimeter fix in the slot with a back of the form protection, then go on-line of another on carry with computer of string a right conjunction is then.
- ✚ If what to use is multimeter the USB provide with the form connect a people's line, the USB pick up a people line of red unauthorized biography lose the line to receive to carry to insert multimeter fix in the slot with a back of the form protection, then go on-line of another on carry with computer of string a right conjunction is then.

## Ø Installing 72-7732 Interface Program

To install **72-7732 Interface Program**, please follow below procedure:

Before install the interface program, make sure that the computer is running the Window 98 or above operating system.

- 1.Insert the provided CD-ROM into CD-ROM drive.
- 2.Double-click the My Computer icon from the Windows desktop.(see figure 1)

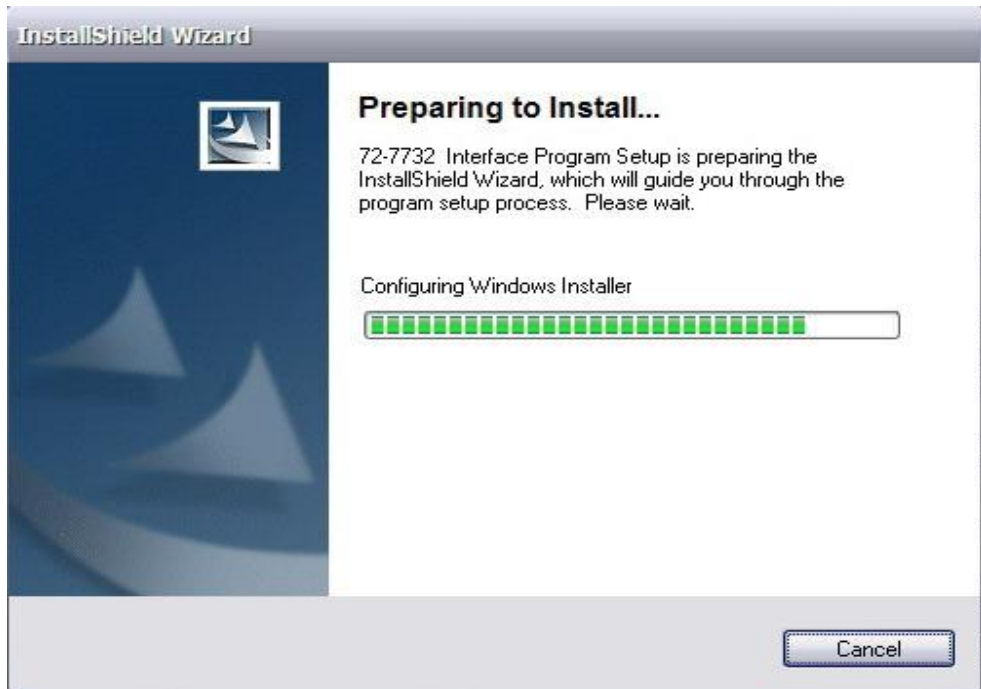


(figure 1)

## Model 72-7732: Installation Guide & Computer Interface Software

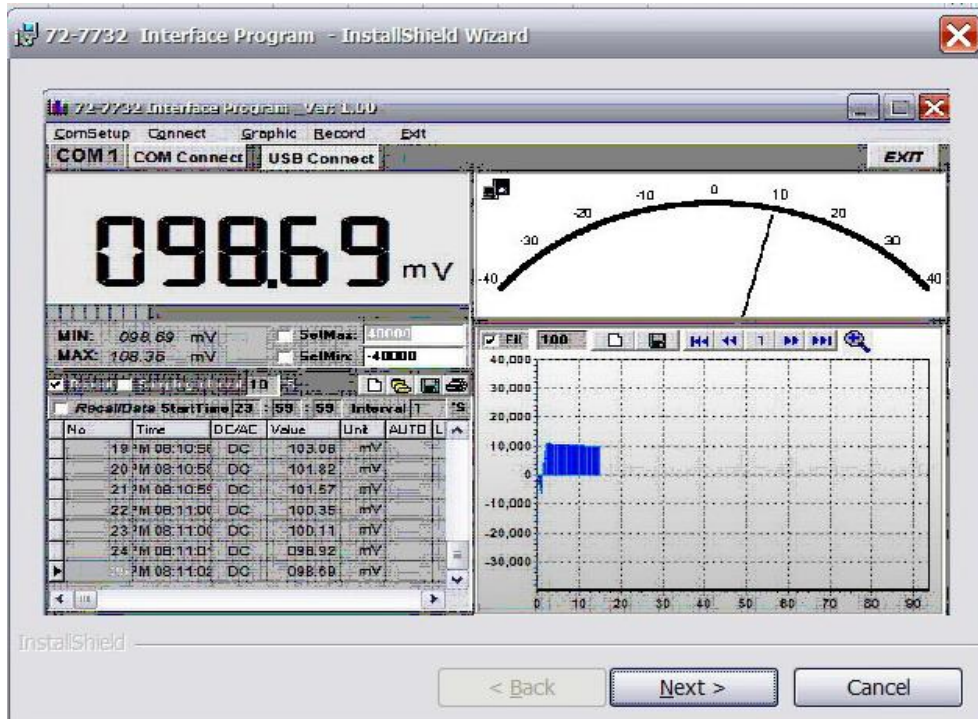
---

3. click 72-7732 Setup to display the contents of the folder. Double-click the file Setup.Exe. (see figure 2)



(figure 2)

4. Follow the on-screen installation instructions.

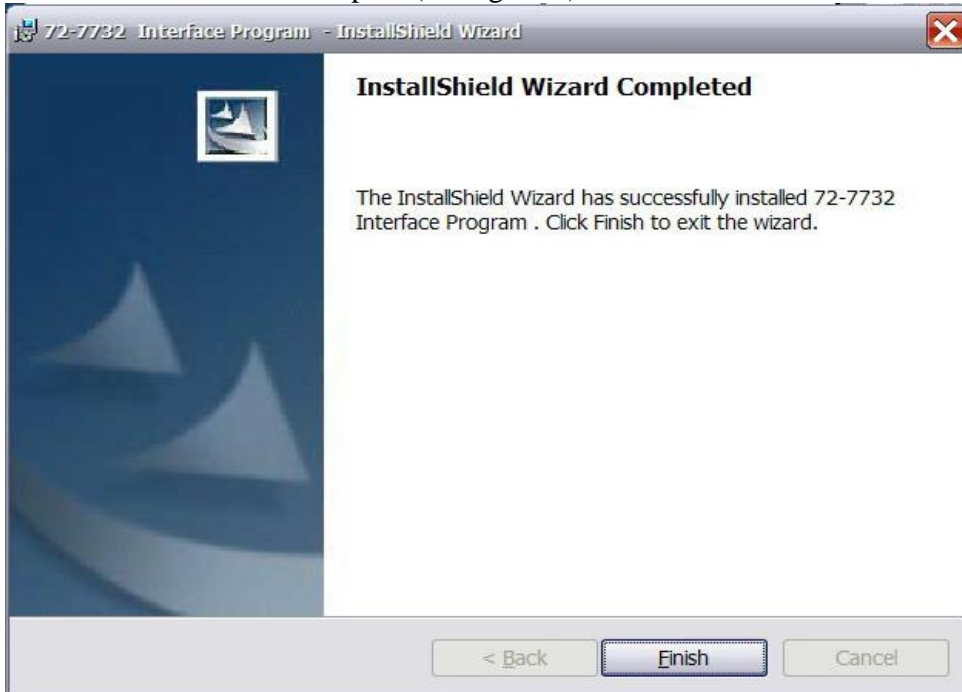


(figure 3)

## Model 72-7732: Installation Guide & Computer Interface Software

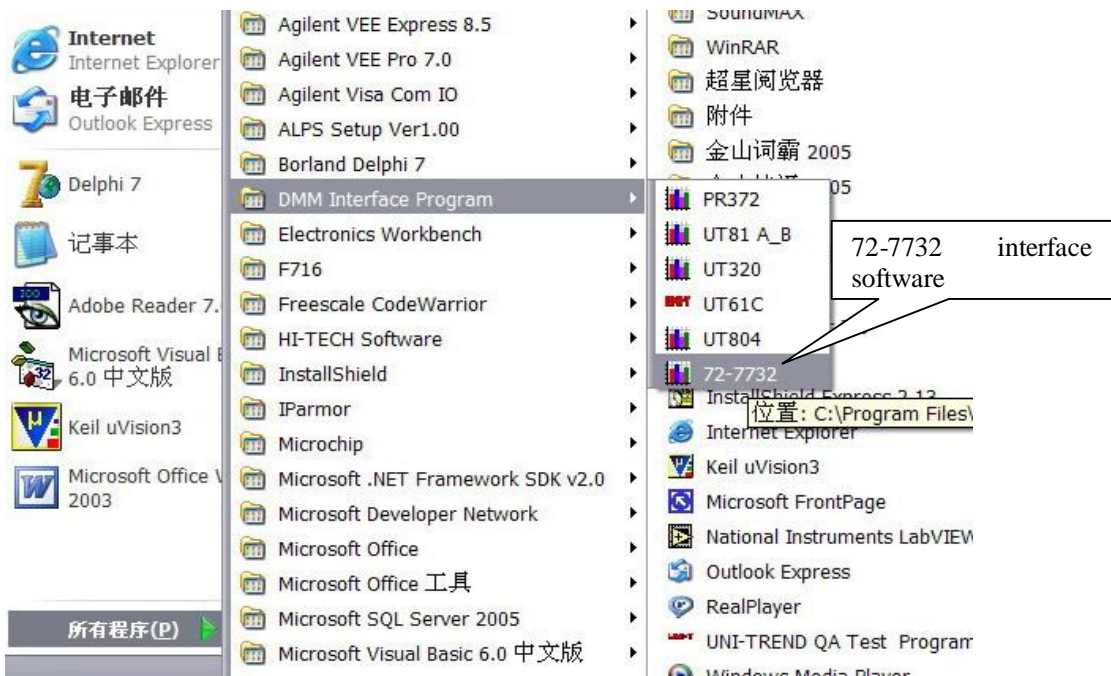
---

5. Until the software installs to complete(see figure 4)



(figure 4)

6. The software installs to complete, the customer can find out" the DMM Interface Program- 72-7732" in program folder ,see figure 5



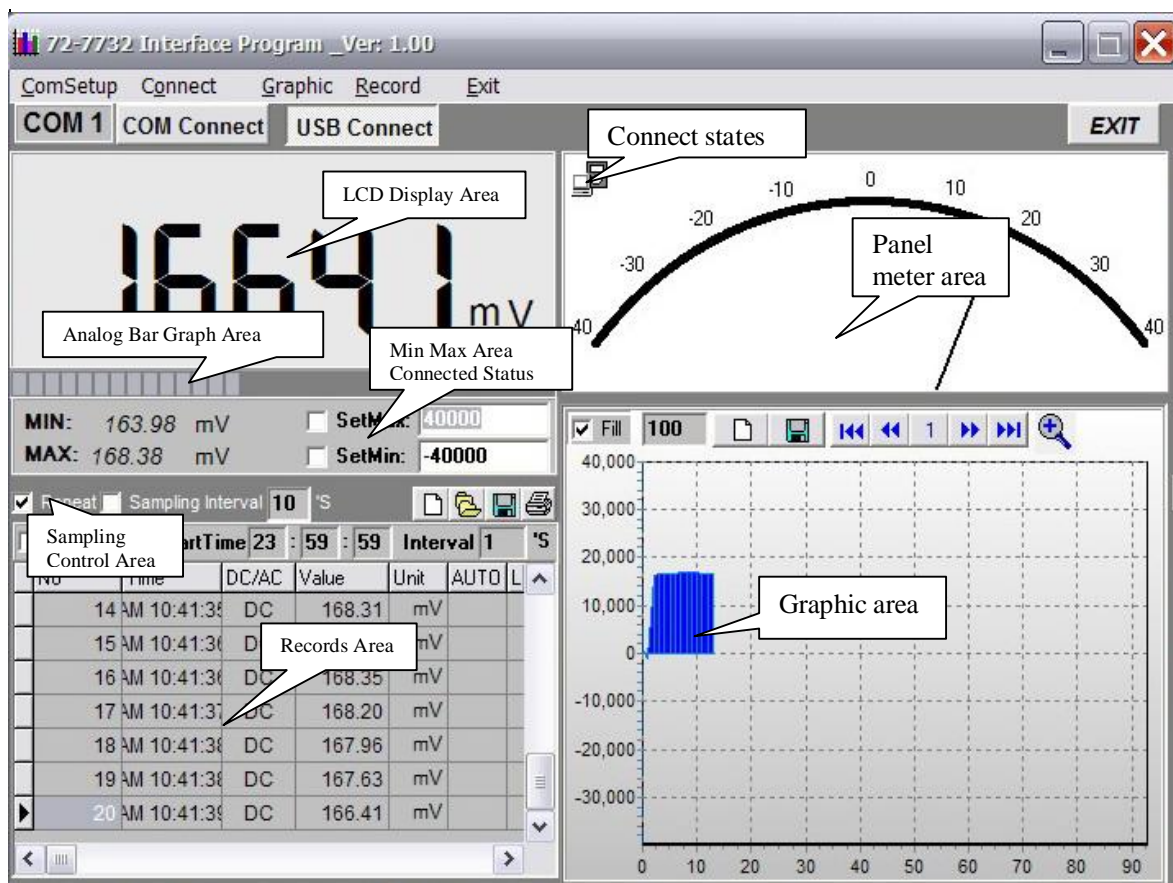
(figure 5)

## Ø Getting Started with 72-7732 Interface Program

To run the **DMM Interface Program**, please do the followings:

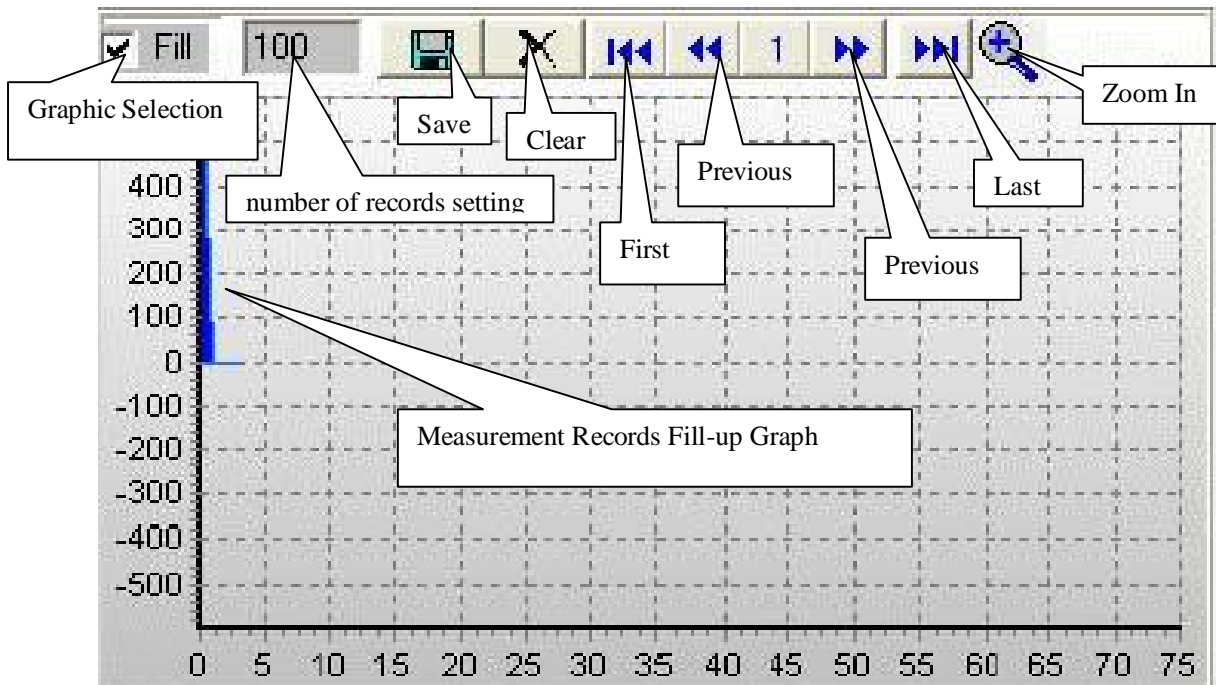
- ✚ Insert the supplied RS232C Interface Cable into the slot at the back of the meter and properly connect the other end of OR insert the supplied usb interface cable into the slot at the back of the cable to the serial port of computer.
- ✚ 2. From the Windows **Start** menu, choose **Programs > DMM Interface Program > 72-7732**
- ✚ Press **COMSetup** to select corresponding COM 1 / 2 / 3 / 4. OR **USB** connect
- ✚ Press **Connect** from menu bar to start the connection, the icon will be displayed.

Below is the full screen of the software shown on the computer (see figure 6)












(figure 6)

## Ø Graphic operation



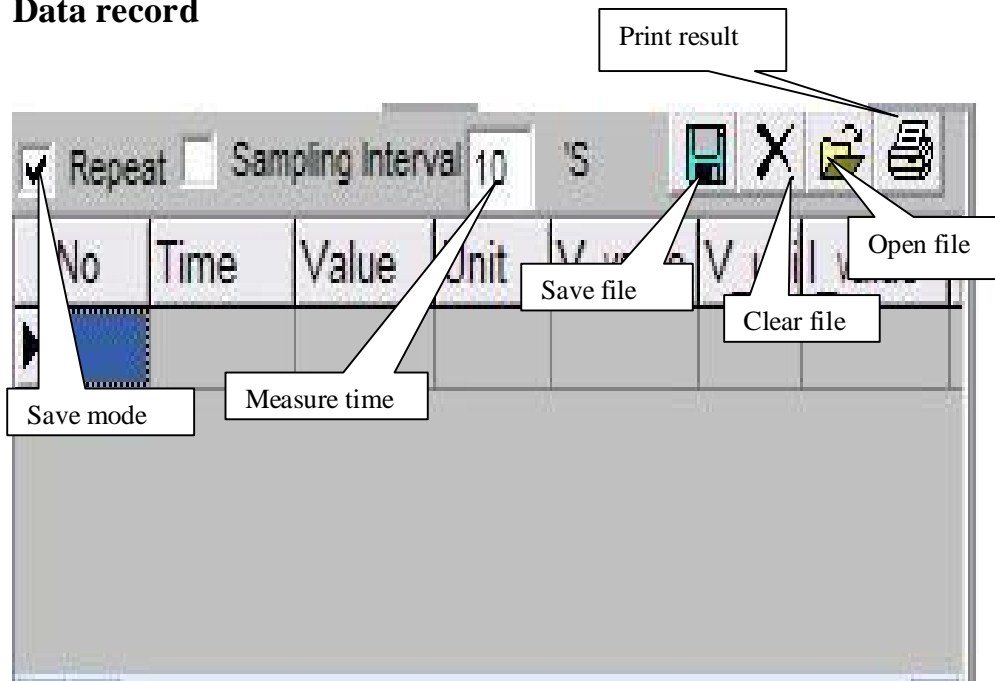
(figure 7)

During the connection, you can select the following functions by clicking the corresponding icon or the menu bar:

-  **Fill:** Click the box to select “fill-up graph” or unclick to select “line graph”.
-  **Record:** Setting the number of record to be shown on graphic.
-  **Clear:** To clear all the current records’ graphics permanently.
-  **Save:** To save current graphic into BMP format. The default file name is C:\DATA1.BMP”.
-  **First:** Go to the first graphic.
-  **Previous:** Go to the previous graphic.
-  **Next:** Go to the next graphic.
-  **Last:** Go to the last graphic.
-  **Zoom In:** To enlarge part of the graphic.  
To enlarge: left click the mouse and drag from top to bottom and left to right.  
To restore: left click the mouse and drag from bottom to top and right and left.









## Ø Data record



(figure 8)

**During the connection, you can select the following functions by clicking the corresponding icon or the menu bar:**

-  **Repeat:** Click the box to keep the repeated record, or unclick the box to ignore the repeated record. The repeated records will be shown in graphic no matter what the selection is.
-  **Sampling Interval:** Click to enable sampling interval function, or unclick to disable the function  
Enter the sampling interval's time, the unit is second.
-  **Clear:** To clear all the current records permanently.
-  **Open files:** To read records from old file (\*.db) .
-  **Save as:** To save all the current records to file (\*.txt、\*.xls、\*.db) 。
-  **print:** To print the current records.

## Remarks:

- ✚ If abnormal digits or symbols were found after installation, please remove font "UNIT-A2" and then install new font set from "FONT" directory on the provided CD-ROM.
- ✚ The software designed to display the current measured value from the Meter. When the data hold, Max or Min functions are enabled, it is normal that the Meter displayed value difference from the computer due to the Meter display has already locked.

\*\*END\*\*