

# Timbuktu for Windows™, version 9.0 Quick Reference

## Starting Timbuktu

Timbuktu version 9 runs as two separate applications: the Timbuktu Host listens for and accepts incoming Timbuktu connections, and the Timbuktu Guest establishes outgoing connections to other Timbuktu computers.

### Starting the Timbuktu Host

From the Windows Start menu, choose Programs ▶ Timbuktu for Windows ▶ Start Timbuktu Host.

The Timbuktu Host starts automatically when you start Windows. Its icon is placed in the system tray on the taskbar. If the Timbuktu Host is shut down, you can manually start it at any time.

### Starting the Timbuktu Guest

From the Windows Start menu, choose Programs ▶ Timbuktu for Windows ▶ Timbuktu Guest.

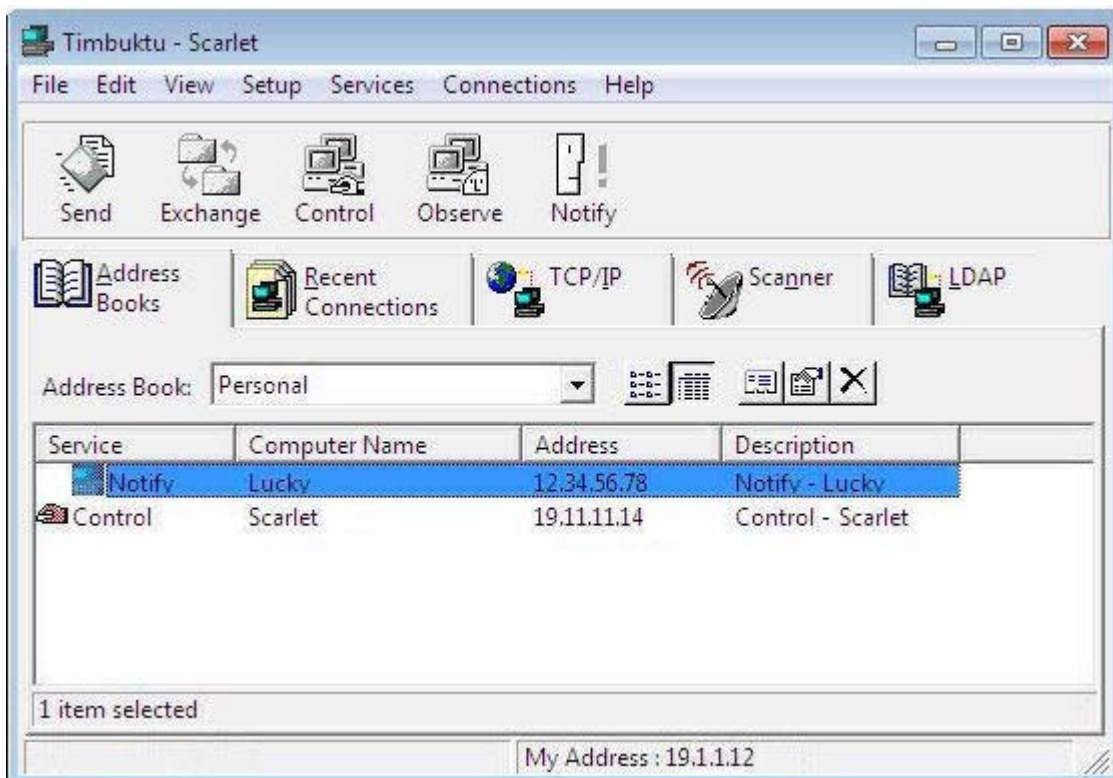
The Timbuktu Guest does not start automatically when you start Windows. When you wish to make an outgoing Timbuktu connection, start the Timbuktu Guest as you would start any other application.

## Making Connections with the Timbuktu Guest

### Finding and Selecting a Remote Computer

Timbuktu provides a number of methods that allow you to find and select other Timbuktu computers. As long as you have the proper access credentials or are granted access by the computer's local user, you can connect to any computer that is running Timbuktu.

To begin the connection process, start the Timbuktu Guest. The Timbuktu Guest window opens, displaying the Address Books tab. Select a computer in an address book or choose another connection tab.



## Address Books Tab

Address book files contain lists of other Timbuktu computers and their addresses. You can add, edit, and delete address books at any time.

1. Click the **Address Books** tab.
2. Select an address book from the **Address Book** drop-down list.
3. Select a computer from the address list.
4. Select a Timbuktu service as described later in this document.

## TCP/IP Tab

On the **TCP/IP** tab, you can enter the IP address, WINS or DNS name, or email address of a remote computer.

1. Click the **TCP/IP** tab.
2. In the **TCP/IP Address** box, enter the computer's IP address, DNS or WINS name, or email address.
3. To use SSH to secure your connection, select the **Use SSH** check box. Then enter your OS-level user name for the **remote computer**.
4. Select a Timbuktu service as described later in this document.

## LDAP Tab

Timbuktu's LDAP support allows you to search an LDAP server for users whose LDAP profiles include your search string.

1. Click the **LDAP** tab.
2. Enter search criteria and click **Find Now**.  
You may enter the computer or user name, IP address, email address, location, or comment. To see the whole directory, enter \*.
3. When the search is complete, select the desired computer from the search results.
4. Select a Timbuktu service as described later in this document.

## Recent Connections Tab

The **Recent Connections** tab lists the Timbuktu computers to which you've recently connected.

1. Click the **Recent Connections** tab.
2. Select the desired computer from the address list.
3. Select a Timbuktu service as described later in this document.

## Scanner Tab

On the **Scanner** tab, you can search your local network for active Timbuktu computers.

1. Click the **Scanner** tab.
2. Click **Scan** to begin the search.  
Timbuktu displays the remote computers it locates as it finds them. When the scan is complete, the **Save** button becomes available.
3. In the list of computers, select the desired computer.
4. Select a Timbuktu service as described later in this document.

# Using Timbuktu Services

Once you have selected a Timbuktu computer, click a service button on the service toolbar to begin the connection process. To complete the connection, you may need to enter user credentials or ask for permission.



## Using Control and Observe

The Control service lets you control another computer using your mouse and keyboard. The Observe service lets you view the desktop of the other computer, but you cannot control it.

### To control or observe another computer

1. Select a computer and click the **Control** or **Observe** button.  
Timbuktu displays the other computer's desktop in a screen-sharing window.
2. If you chose **Control**, use your mouse and keyboard to operate the other computer in the screen-sharing window. If you chose **Observe**, you can observe but not control the other computer.
3. To operate your own computer, click outside the screen-sharing window.
4. To stop controlling or observing, close the screen-sharing window.

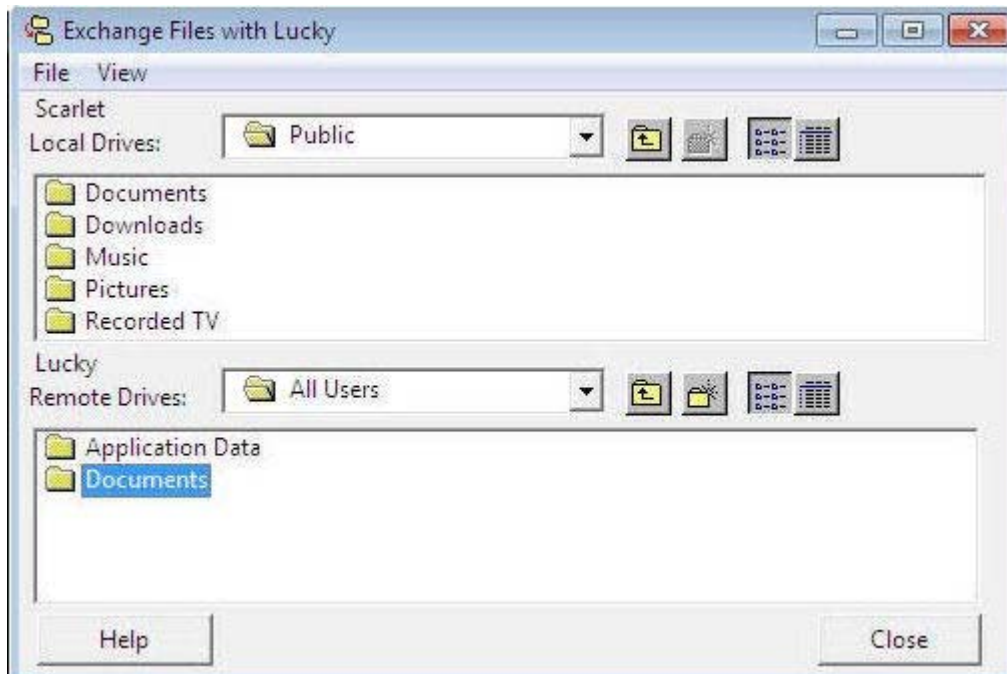


## Using Exchange

The Exchange service lets you copy and move files and folders in both directions between your computer and another Timbuktu computer.

### To copy and move files and folders

1. Select a computer and click the **Exchange** button.  
The Exchange window appears. The upper panel lists the drives, folders, and files on your computer. The lower panel lists the drives, folders, and files on the other computer.
2. Locate the file or folder you want to copy and drag it to the desired location on the destination computer. If necessary, click the **Create Folder** icon to create a new folder on the destination computer.
3. When you have finished exchanging files, close the Exchange window.

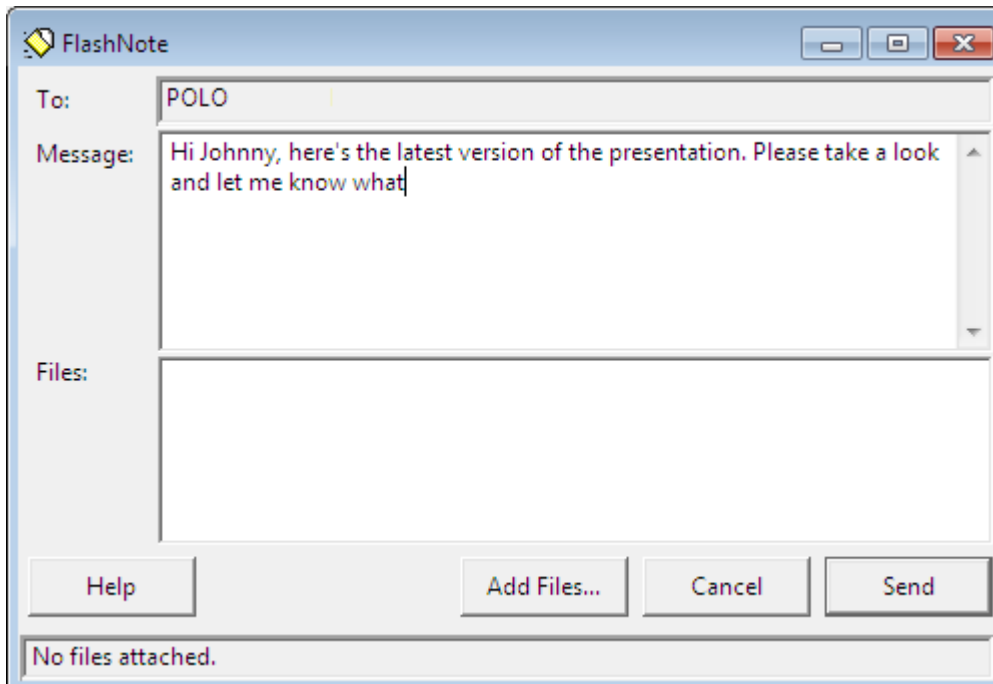


## Using Send

The Send service lets you send messages and files to remote computers.

### To send messages and files

1. Select a computer and click the **Send** button.
2. The message window appears. To send a message, enter it in the upper panel.
3. To include files with your message, click **Add Files** and make your selection in the Add Files to Note dialog box. Or drag and drop files and folders from the desktop into the **Files** area in the Send window.
4. Click the **Send** button to send the message and files.

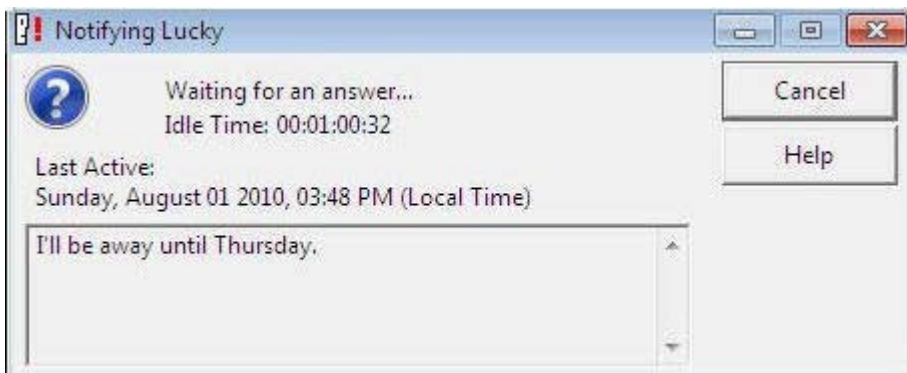


## Using Notify

Timbuktu's Notify service enables you to query another computer to determine whether its user is present.

### To request notification

1. Select a computer and click the **Notify** button.
2. The Notify window opens on your desktop with the message "Waiting for notification." When the other user acknowledges your request, the message in your Notify window changes to "*Name* is there."



# Setting Up the Timbuktu Host

No Timbuktu computer can connect to your computer without your authorization. To allow incoming connections, you must use the Timbuktu Host Configuration Utility to create user accounts or assign privileges to the Guest User account. You can also control certain aspects of how your Timbuktu handles incoming connections

To open the Timbuktu Host Configuration Utility, click the Timbuktu icon in the system tray on the taskbar. From the shortcut menu, choose **Open Host Settings**.

## Managing Discovery and Service Options

Use the Timbuktu Host Configuration Utility to

- Enable the Internet Locator and LDAP server and provide information that will allow other Timbuktu users to find your computer. The Internet Locator allows Timbuktu users to connect to your computer by entering your email address instead of your computer's IP address. The LDAP server allows other users to find your computer by searching for the user information you provide, including the computer name, user name, email address, and location.

Use the **General** and **LDAP** tabs to configure Internet Locator and LDAP options.

- You can control certain aspects of how your Timbuktu handles incoming connections that use the Control, Observe, Send, and Notify services. Use the **Remote Control**, **Send**, and **Notify** tabs to configure these services.

## Creating User Accounts

You can assign access privileges to all Guest Users, allow users to ask for permission to use unassigned services, and create NT User and Registered User accounts with specific access privileges.

### Guest Users

Any Timbuktu user can connect to your computer, without entering a password, using the access privileges that you assign to the Guest User account.

1. In the Timbuktu Host Configuration Utility, click the **Guest User** tab.
2. Select the services you wish to grant to the Guest User account.
3. To allow users ask for permission to use other services, select **Guests May Ask For Permission to Use Unchecked Services**.
4. Click **OK** to save your changes and close the Timbuktu Host Configuration Utility.

### Ask for Permission Users

If you enable **Guests May Ask for Permission** on the **Guest User** tab in the Timbuktu Host Configuration Utility, other Timbuktu users may request permission to access services you have not granted to the Guest User account.

When another Timbuktu user asks for permission, the Ask For Permission dialog box opens on your screen and displays the other computer's name and address and the requested service.

Click **OK** to allow the connection or **Cancel** to deny it.

If you are not present at your computer to grant the request, it will automatically be denied in 30 seconds.

---

## Documentation and Online Help

Timbuktu's comprehensive online Help contains additional information about Timbuktu services and features as well as troubleshooting tips and step-by-step instructions for common procedures. To open the online Help, click the **Help** menu and choose **Contents**. Or click the **Help** button in any window to display its online Help topic.

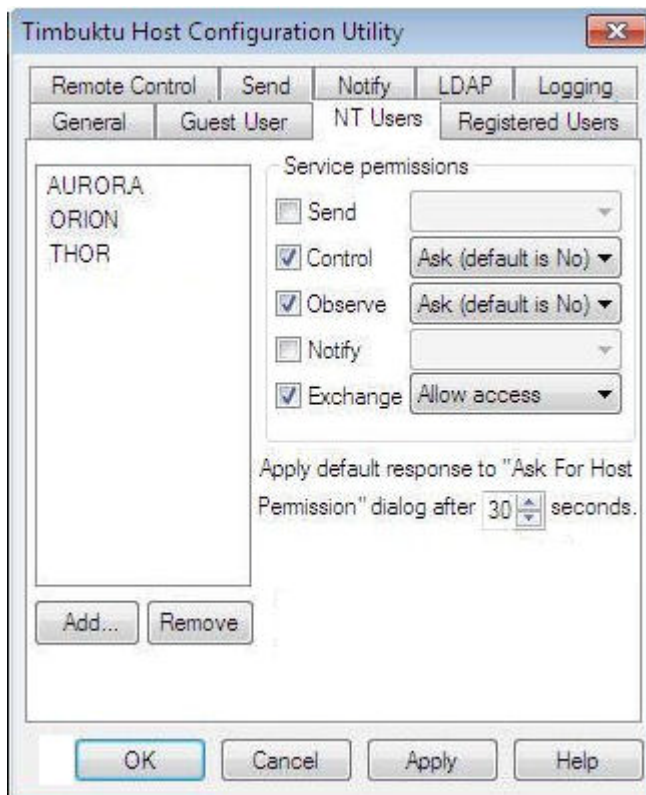
The Timbuktu **Getting Started Guide** covers installing, setting up, and using Timbuktu. It is available as a PDF file on your Timbuktu CD or in the package you downloaded from the Motorola Web site.

*This document is Motorola part number 578137-001-00. Copyright © Motorola, Inc. All rights reserved.*

## NT Users

*NT Users* are users or user groups on your Windows network to whom you grant permission to use specific Timbuktu services on your computer. NT Users are authenticated when they log on to the Windows network. An NT User can connect to your computer anytime the Timbuktu Host is running.

1. In the Timbuktu Host Configuration Utility, click the **NT Users** tab.
2. On the **NT Users** tab, click the **Add** button.
3. Use the controls in the Add Users and Groups dialog box to resolve the Windows object you wish to add as an NT User. Then click **OK**.
4. On the **NT Users** tab, select the new NT User.
5. In the **Service Permissions** area, select the check box and an **Ask for Permission** option for each service you wish to grant.
6. Click **OK** to save your changes and close the Timbuktu Host Configuration Utility.



## Registered Users

Like NT Users, *Registered Users* have password-protected access to your computer anytime the Timbuktu Host is running. However, they are not authenticated by Windows. Instead, they must supply a user name and password, which you assign, before they can connect to your computer.

1. In the Timbuktu Host Configuration Utility, click the **Registered Users** tab.
2. Click the **Add Registered User** button to create a Registered User.
3. Enter a user name and password for the Registered User.
4. In the **Check the Services to Grant** area, select services to wish to grant to this Registered User.
5. If you want the option to reject connection attempts by this user, check the **Ask for Host Permission** box and specify the options.

