

FLANSBURGH ARCHITECTS
77 North Washington Street
Boston, Massachusetts 02114
617.367.3970 tel
617.720.7873 fax
www.flansburgh.com

Architecture
Master Planning
Space Planning
Interior Design

PROJECT MANAGEMENT
Pa'ahaia Enterprises, LLC
P.O. Box 109
Kealahou, HI 96755
808.323.2304 tel/fax

SUSTAINABILITY
Buro Happold Consulting Engineers PC
100 Broadway, 23rd Floor
New York, NY, 10005
212.334.2025 tel

CIVIL ENGINEERING
Batt Collins Hawaii Ltd.
2153 North King Street, Suite 200
Honolulu, Hawaii 96819
808.521.5361 tel
808.538.7819 fax

STRUCTURAL ENGINEERING
Walter Vorfeld & Associates
10 Ulana Street
Maikawa, Maui, HI 96768
808.572.3535 tel
808.573.3616 fax

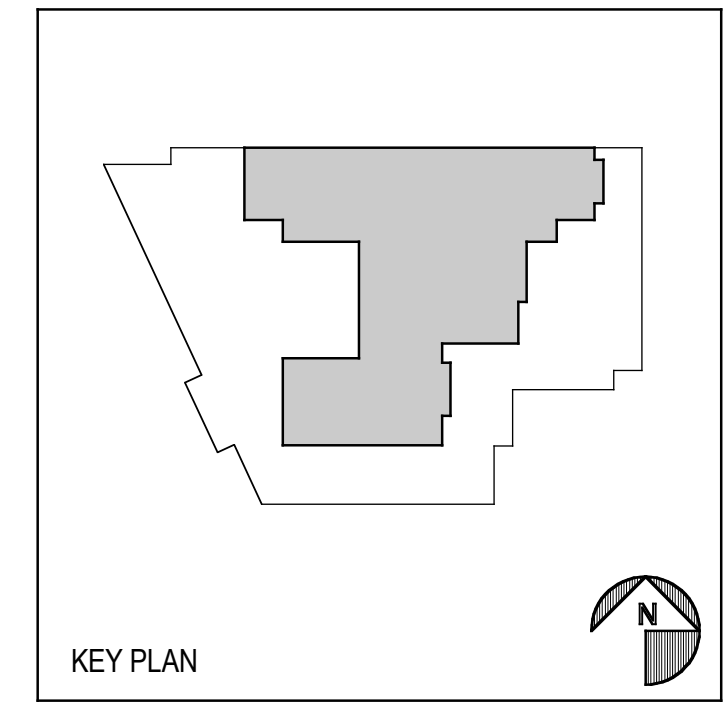
MECHANICAL ENGINEERING
Hakalau Engineering, LLC
PO Box 252
Hakalau, Hawaii 96710
808.961.6206 tel

ELECTRICAL ENGINEERING
Wallace T. Oki, PE, Inc.

This work was performed by me or under my supervision and construction of this project will be under my observation (observation of construction as defined in section 16-115.2 of the rules and regulations of the Board of Professional Engineers, Architects and Surveyors of the State of Hawaii).

Duncan P. McClelland, AIA
Architect License No. 15148, Expires 4/30/2010

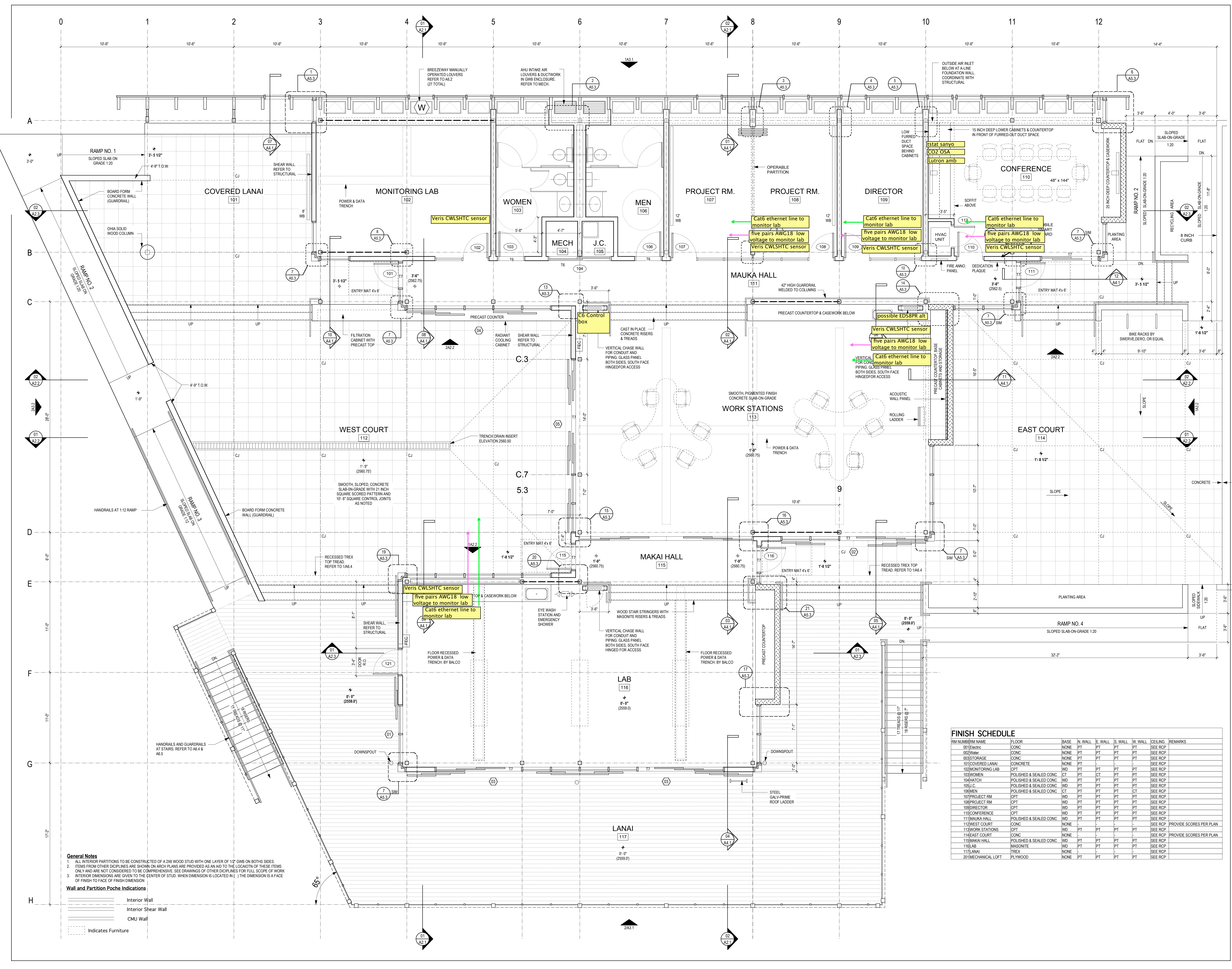
Add. No.	Description of Revision	Date



FLOOR PLAN

Drawn by: BF & CB Job Number: 2804.00
Checked by: CB Scale: 1/4" = 1'-0"
Plot Date: 27 MAR 2009 Issue Date: 27 MAR 2009

REVISED PERMIT DRAWINGS **A 1.1**



FINISH SCHEDULE

RM NUMBER NAME	FLOOR	BASE	N WALL	E WALL	S WALL	W WALL	CEILING	REMARKS
001 ENTRH		CONC	PT	PT	PT	PT	PT	SEE RCP
002 WHR		CONC	NONE	PT	PT	PT	PT	SEE RCP
003 STORAG		CONC	NONE	PT	PT	PT	PT	SEE RCP
101 COVERED LANAI		CONCRETE	NONE	PT	PT	PT	PT	SEE RCP
102 MONITORING LAB		CPT	WD	PT	PT	PT	PT	SEE RCP
103 WOMEN		POLISHED & SEALED CONC	CT	PT	CT	PT	PT	SEE RCP
104 HATCH		POLISHED & SEALED CONC	WD	PT	PT	PT	PT	SEE RCP
105 J.C.		POLISHED & SEALED CONC	WD	PT	PT	PT	PT	SEE RCP
106 MEN		POLISHED & SEALED CONC	CT	PT	PT	PT	CT	SEE RCP
107 PROJECT RM		CPT	WD	PT	PT	PT	PT	SEE RCP
108 PROJECT RM		CPT	WD	PT	PT	PT	PT	SEE RCP
109 DIRECTOR		CPT	WD	PT	PT	PT	PT	SEE RCP
110 CONFERENCE		CPT	WD	PT	PT	PT	PT	SEE RCP
111 MAUKA HALL		POLISHED & SEALED CONC	WD	PT	PT	PT	PT	SEE RCP
112 WEST COURT		CONC	NONE	-	-	-	-	SEE RCP
113 WORK STATIONS		CPT	WD	PT	PT	PT	PT	SEE RCP
114 EAST COURT		CONC	NONE	-	-	-	-	SEE RCP
115 MAKAI HALL		POLISHED & SEALED CONC	WD	PT	PT	PT	PT	SEE RCP
116 LAB		MASONITE	WD	PT	PT	PT	PT	SEE RCP
117 LANAI		TREX	NONE	-	-	-	-	SEE RCP
201 MECHANICAL LOFT		PLYWOOD	NONE	PT	PT	PT	PT	SEE RCP

General Notes
1. ALL INTERIOR PARTITIONS TO BE CONSTRUCTED OF A 2X6 WOOD STUD WITH ONE LAYER OF 1/2" GWB ON BOTH SIDES.
2. ITEMS FROM OTHER DISCIPLINES ARE SHOWN ON ARCH PLANS ARE PROVIDED AS AN AID TO THE LOCATION OF THESE ITEMS ONLY AND ARE NOT CONSIDERED TO BE COMPREHENSIVE. SEE DRAWINGS OF OTHER DISCIPLINES FOR FULL SCOPE OF WORK.
3. INTERIOR DIMENSIONS ARE GIVEN TO THE CENTER OF STUD. WHEN DIMENSION IS LOCATED IN () THE DIMENSION IS A FACE OF FINISH TO FACE OF FINISH DIMENSION.

Wall and Partition Poche Indications

- Interior Wall
- Interior Shear Wall
- CMU Wall
- Indicates Furniture