

# ENERGY LAB

Hawai'i Preparatory Academy

Kamuela, Hawaii  
TMK: 6-5-1: 33

FLANSBURGH ARCHITECTS

77 North Washington Street  
Boston, Massachusetts 02114  
617.367.3970 tel  
617.720.7873 fax  
www.flansburgh.com

Architecture  
Master Planning  
Space Planning  
Interior Design

PROJECT MANAGEMENT

Pa'ahana Enterprises, LLC  
P.O. Box 109  
Kealahou, HI 9675  
808.323.2304 tel/fax

SUSTAINABILITY

Buro Happold Consulting Engineers PC  
100 Broadway, 23rd Floor  
New York, NY, 10005  
212.334.2025 tel

CIVIL ENGINEERING

Belt Collins Hawaii Ltd.  
2153 North King Street, Suite 200  
Honolulu, Hawaii 96819  
808.521.5361 tel  
808.538.7819 fax

STRUCTURAL ENGINEERING

Walter Vorfeld & Associates  
10 Ulana Street  
Makawao, Maui, HI 96768  
808.572.3535 tel  
808.573.3616 fax

MECHANICAL ENGINEERING

Hakalau Engineering, LLC  
PO Box 252  
Hakalau, Hawaii 96710  
808.961.6206 tel

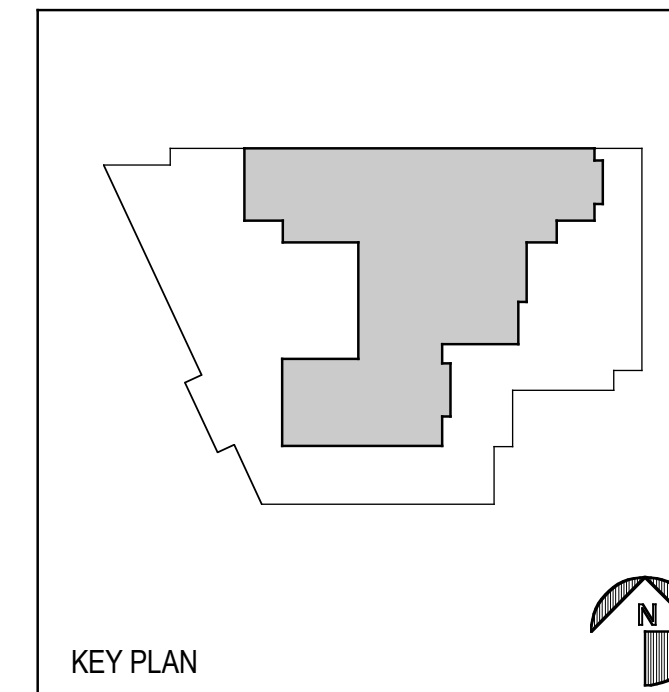
ELECTRICAL ENGINEERING

Wallace T. Oki, PE, Inc.

This work was performed by me or under my supervision and construction of this project will be under my observation (observation of construction as defined in section 16-115.2 of the rules and regulations of the Board of Professional Engineers, Architects and Surveyors of the State of Hawaii).

Duncan P. McClelland, AIA  
Architect License No. 13148, Expires 4/30/2010

Add. No.	Description of Revision	Date



CLERESTORY PLAN

Drawn by: BF & CB Job Number: 2804.00  
Checked by: CB Scale: 1/4" = 1'-0"  
Plot Date: 16 JAN 2009 Issue Date: 19 JAN 2009

A  
1.2

