

# ENERGY LAB

Hawai'i Preparatory Academy

Kamuela, Hawaii  
TMK: 6-5-1: 33

## FLANSBURGH ARCHITECTS

77 North Washington Street  
Boston, Massachusetts 02114  
617.367.3970 tel  
617.720.7873 fax  
www.flaarchitects.com

Architecture  
Master Planning  
Space Planning  
Interior Design

### PROJECT MANAGEMENT

**Pa'ahana Enterprises, LLC**  
P.O. Box 109  
Kealahou, HI 9675  
808.323.2304 tel/fax

### SUSTAINABILITY

**Buro Happold Consulting Engineers PC**  
100 Broadway, 23rd Floor  
New York, NY, 10005  
212.334.2025 tel

### CIVIL ENGINEERING

**Belt Collins Hawaii Ltd.**  
2153 North King Street, Suite 200  
Honolulu, Hawaii 96819  
808.521.5361 tel  
808.538.7819 fax

### STRUCTURAL ENGINEERING

**Walter Vorfeld & Associates**  
10 Ulana Street  
Makawao, Maui, HI 96768  
808.572.3535 tel  
808.573.3616 fax

### MECHANICAL ENGINEERING

**Hakalau Engineering, LLC**  
PO Box 252  
Hakalau, Hawaii 96710  
808.961.6206 tel

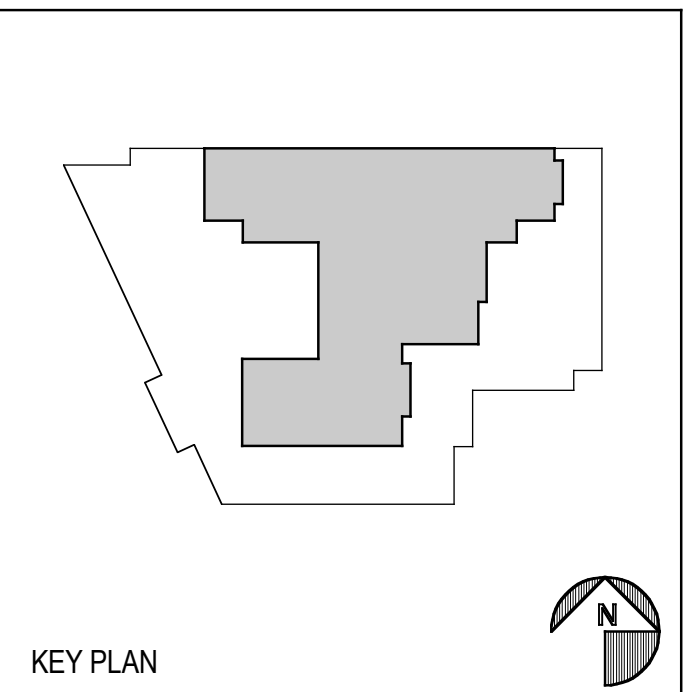
### ELECTRICAL ENGINEERING

**Wallace T. Oki, PE, Inc.**

This work was performed by me or under my supervision and construction of this project will be under my observation (observation of construction as defined in section 16-115.2 of the rules and regulations of the Board of Professional Engineers, Architects and Surveyors of the State of Hawaii).

Duncan P. McClelland, AIA  
Architect License No. 13148, Expires 4/30/2010

Add. No.	Description of Revision	Date
1	Addenda #1	10/31/08



## ROOF PLAN

Drawn by: BF & CB Job Number: 2804.00  
Checked by: CB Scale: 1/4" = 1'-0"  
Plot Date: 16 JAN 2009 Issue Date: 19 JAN 2009

A  
1.3

