

# ENERGY LAB

Hawai'i  
Preparatory  
Academy

Kamuela, Hawaii  
TMK: 6-5-1: 33

FLANSBURGH ARCHITECTS

77 North Washington Street  
Boston, Massachusetts 02114  
617.367.3970 tel  
617.720.7873 fax  
www.flansburgh.com

Architecture  
Master Planning  
Space Planning  
Interior Design

PROJECT MANAGEMENT  
**Pa'ahana Enterprises, LLC**  
P.O. Box 109  
Kealahou, HI 9675  
808.323.2304 tel/fax

SUSTAINABILITY  
**Buro Happold Consulting Engineers PC**  
100 Broadway, 23rd Floor  
New York, NY, 10005  
212.334.2025 tel

CIVIL ENGINEERING  
**Bett Collins Hawaii Ltd.**  
2153 North King Street, Suite 200  
Honolulu, Hawaii 96819  
808.521.5361 tel  
808.538.7819 fax

STRUCTURAL ENGINEERING  
**Walter Vorfeld & Associates**  
10 Uliana Street  
Makawao, Maui, HI 96768  
808.572.3535 tel  
808.573.3616 fax

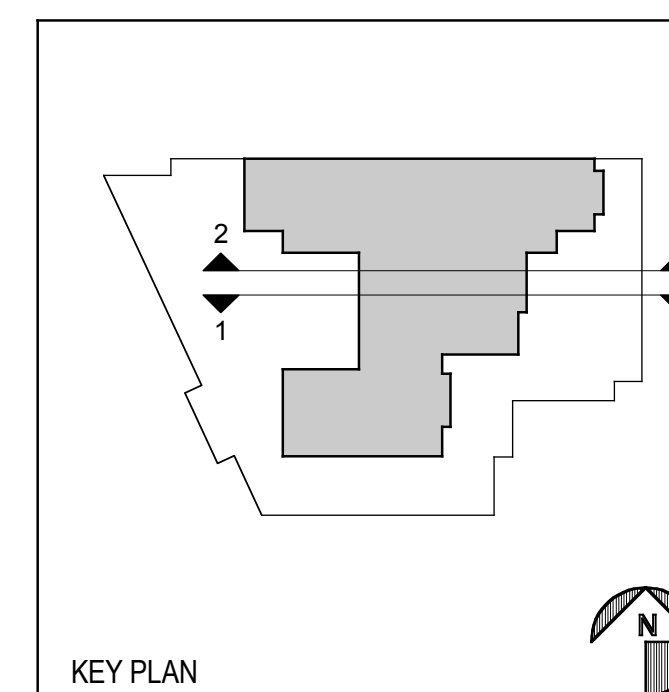
MECHANICAL ENGINEERING  
**Hakalau Engineering, LCC**  
PO Box 252  
Hakalau, Hawaii 96710  
808.961.6206 tel

ELECTRICAL ENGINEERING  
**Wallace T. Oki, PE, Inc.**

This work was performed by me or under my supervision and construction of this project will be under my observation (observation of construction as defined in section 10-115.2 of the rules and regulations of the Board of Professional Engineers, Architects and Surveyors of the State of Hawaii).

Duncan P. McClelland, AIA  
Architect License No. 13148, Expires 4/30/2010

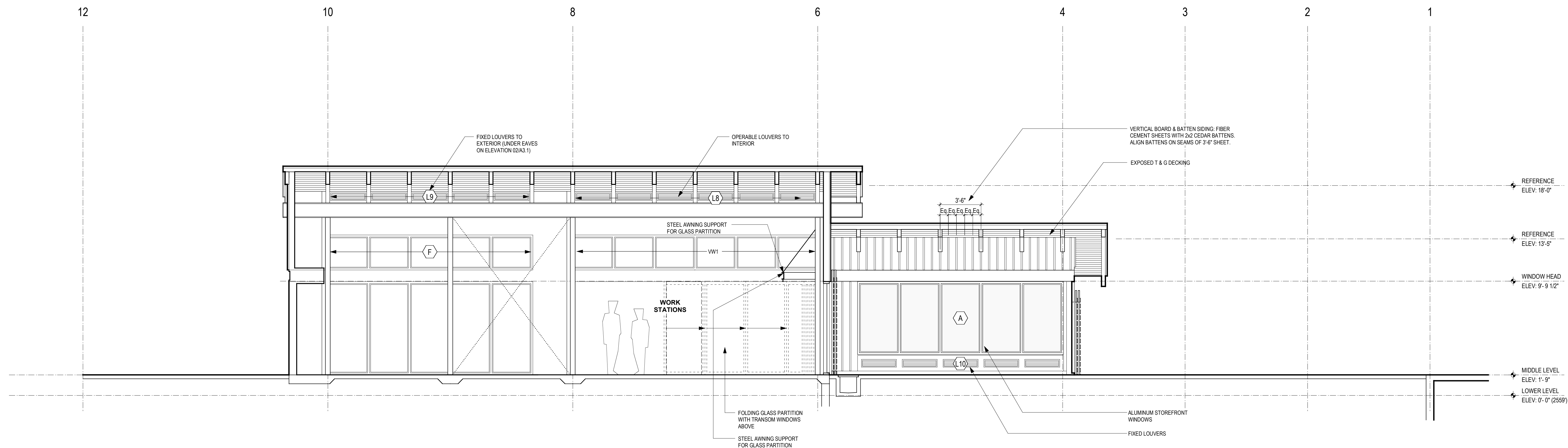
Rev. No.	Description of Revision	Date



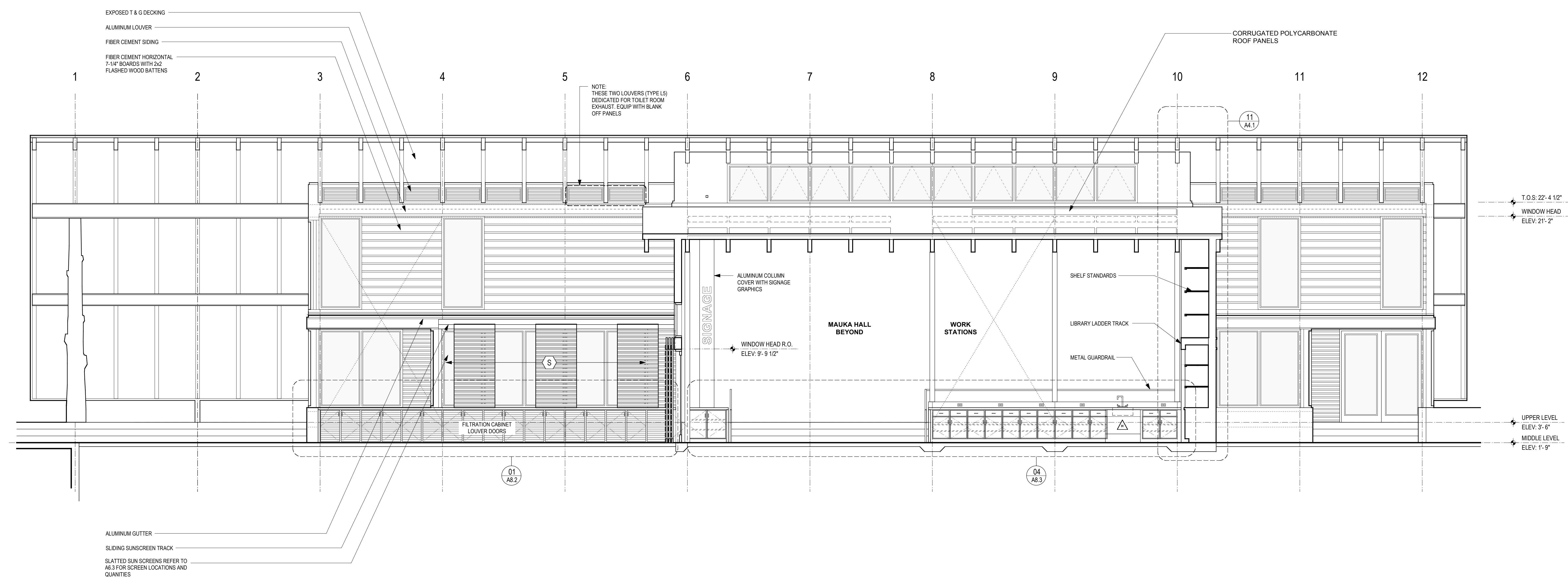
## LONGITUDINAL BUILDING SECTIONS

Drawn by: KB & CB Job Number: 2804.00  
Checked by: CB Scale: 1/4" = 1'-0"  
Plot Date: 16 JAN 2009 Issue Date: 19 JAN 2009

**A  
2.2**



01 - Longitudinal Section Looking South  
Scale: 1/4" = 1'-0"



02 - Longitudinal Section Looking North  
Scale: 1/4" = 1'-0"