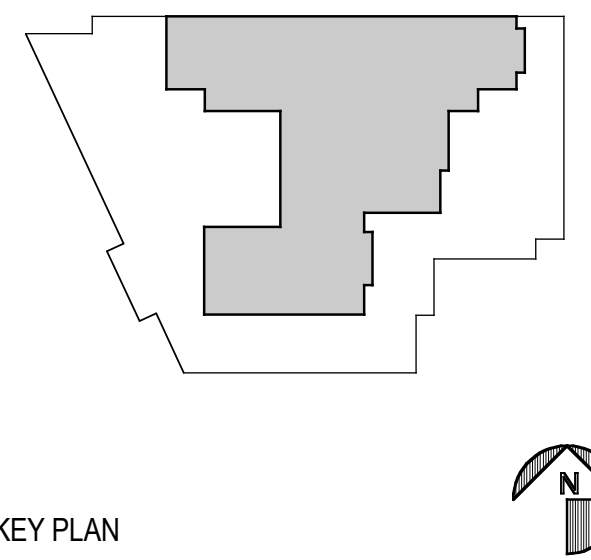


This work was performed by me or under my supervision and construction of this project will be under my observation (observation of construction as defined in section 10-115.2 of the rules and regulations of the Board of Professional Engineers, Architects and Surveyors of the State of Hawaii).

Duncan P. McClelland, AIA
Architect License No. 13148, Expires 4/30/2010

Rev.	Description of Revision	Date



VERTICAL DETAILS

Drawn by: KB & CB Job Number: 2804.00
Checked by: CB Scale: 1-1/2" = 1'-0"
Plot Date: 16 JAN 2009 Issue Date: 19 JAN 2009

