

ENERGY LAB

Hawai'i
Preparatory
Academy

Kamuela, Hawaii
TMK: 6-5-1: 33

FLANSBURGH ARCHITECTS

77 North Washington Street
Boston, Massachusetts 02114
617.367.3970 tel
617.720.7873 fax
www.fairchitects.com

Architecture
Master Planning
Space Planning
Interior Design

PROJECT MANAGEMENT
Palahana Enterprises, LLC
P.O. Box 109
Kealahou, HI 9675
808.323.2304 tel/fax

SUSTAINABILITY
Buro Happold Consulting Engineers PC
100 Broadway, 23rd Floor
New York, NY, 10005
212.334.2025 tel

CIVIL ENGINEERING
Bolt Collins Hawaii Ltd.
2153 North King Street, Suite 200
Honolulu, Hawaii 96819
808.521.5361 tel
808.573.8116 fax

STRUCTURAL ENGINEERING
Waiver Foreid & Associates
10 Uiana Street
Makawao, Maui, HI 96768
808.572.3535 tel
808.573.3616 fax

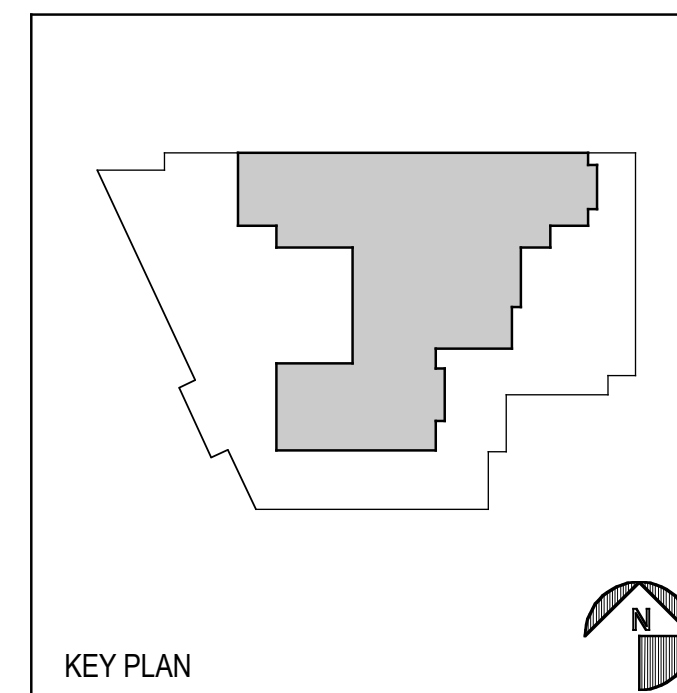
MECHANICAL ENGINEERING
Hakalau Engineering, LLC
PO Box 252
Hakalau, Hawaii 96710
808.961.6206 tel

ELECTRICAL ENGINEERING
Wallace T. Oki, PE, Inc.

This work was performed by me or under my supervision and construction of this project will be under my observation (observation of construction as defined in section 16-115-2 of the rules and regulations of the Board of Professional Engineers, Architects and Surveyors of the State of Hawaii).

Duncan P. McClelland, AIA
Architect License No. 13148, Expires 4/30/2010

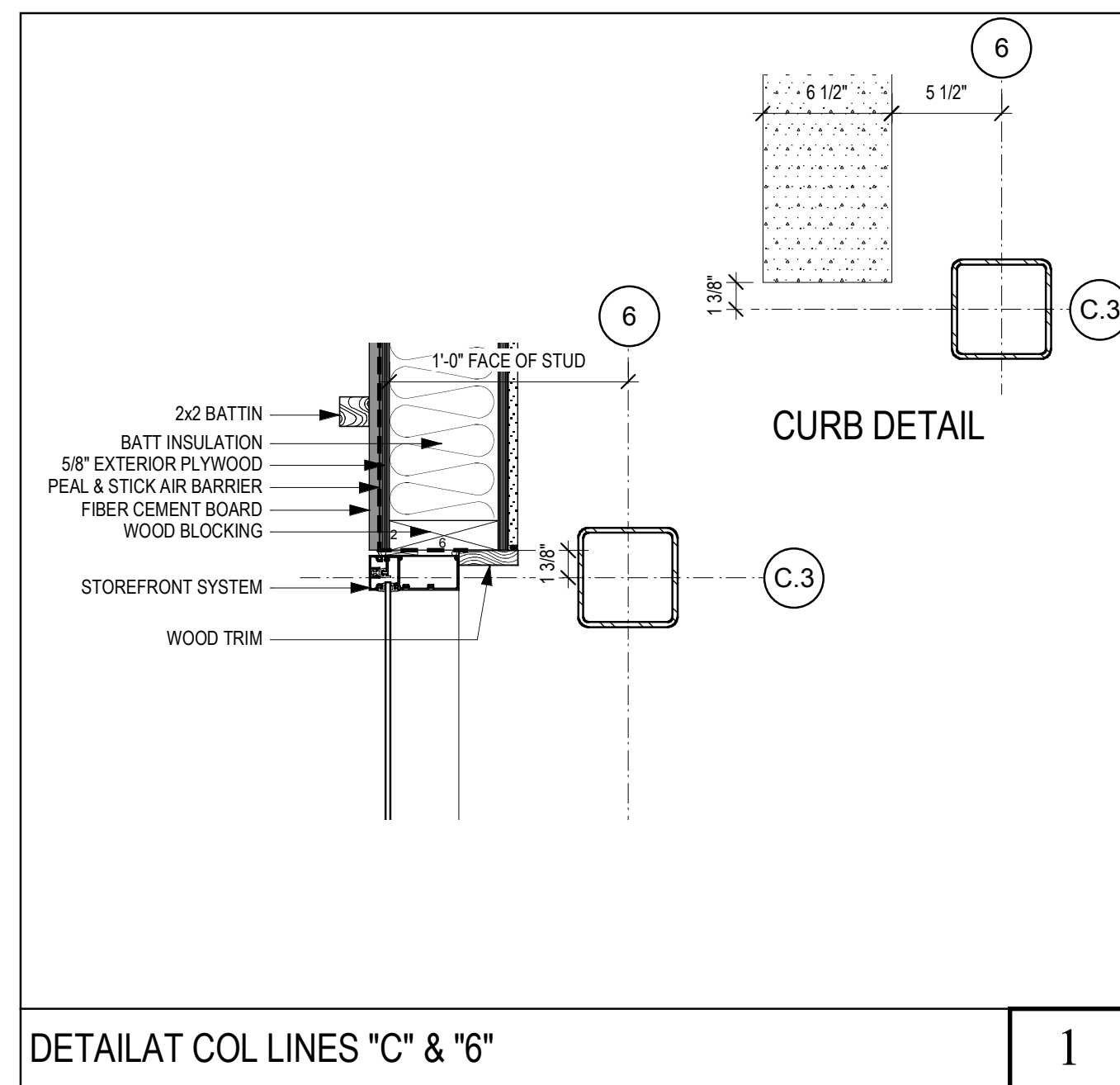
Add. No.	Description of Revision	Date



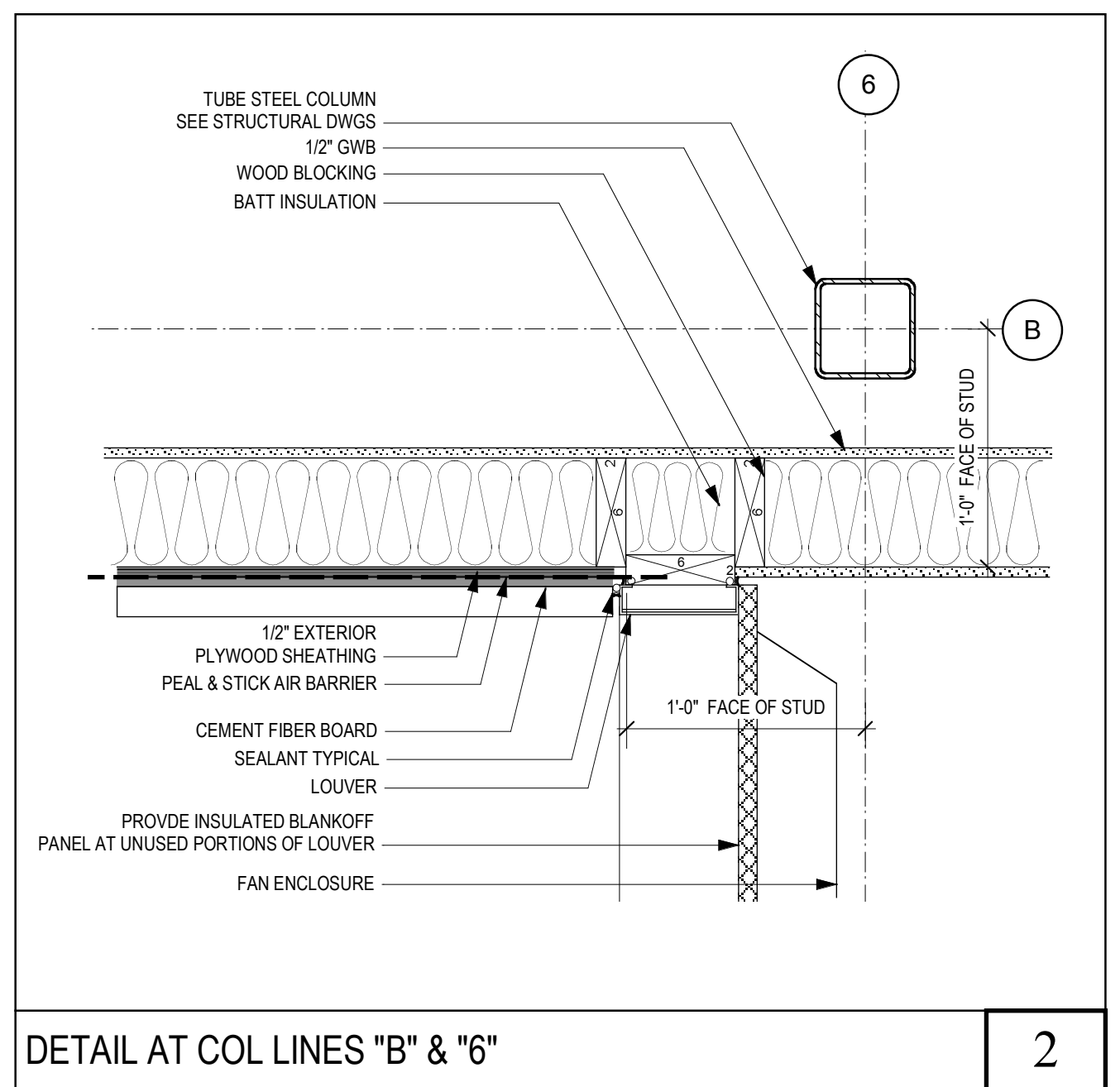
PLAN DETAILS AT CLERESTORY LEVEL

Drawn by: BF & CB Job Number: 2804.00
Checked by: CB Scale: 1/12" = 1'-0"
Plot Date: 16 JAN 2009 Issue Date: 19 JAN 2009

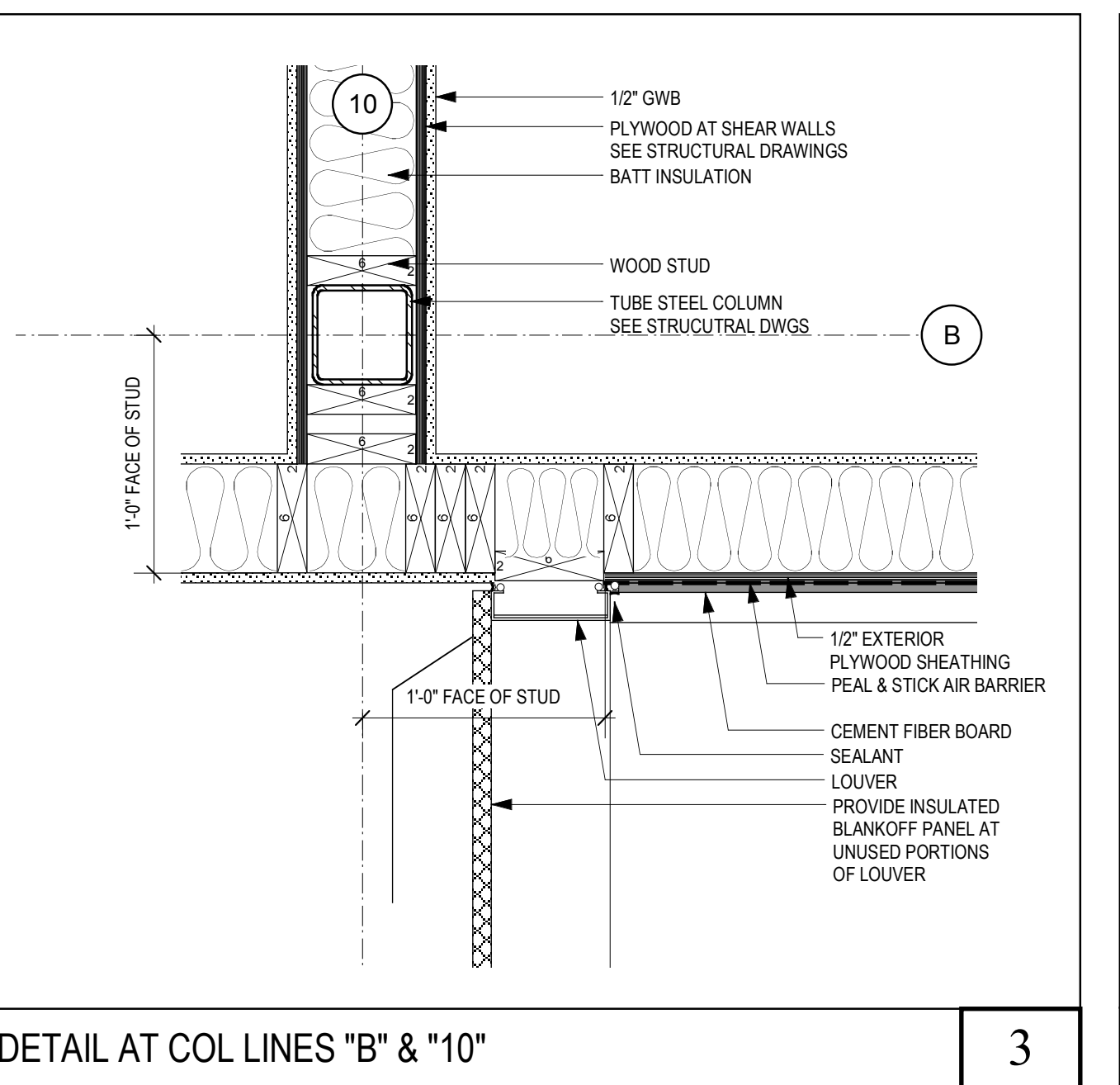
A
5.4



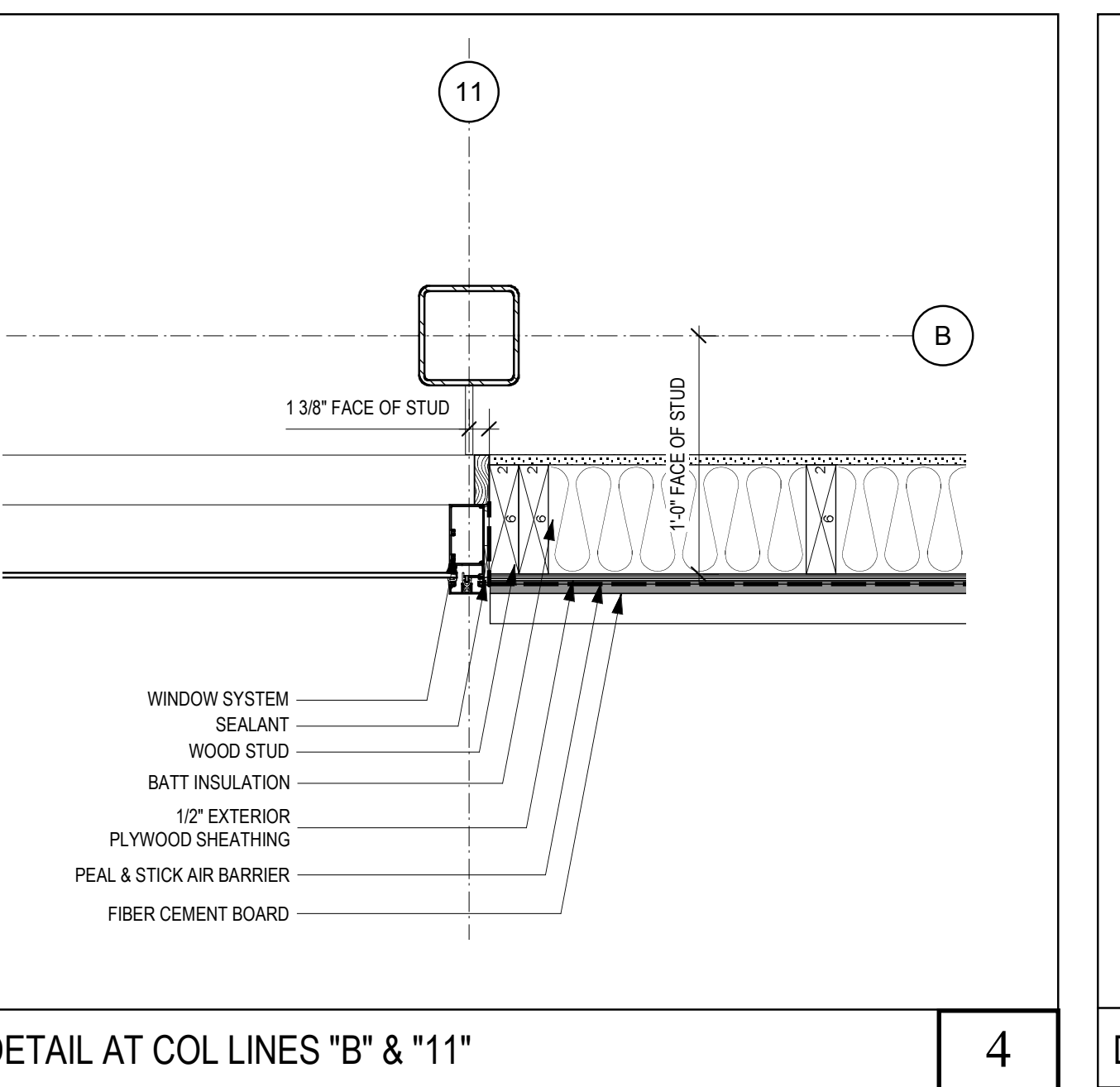
DETAIL AT COL LINES "C" & "6" 1



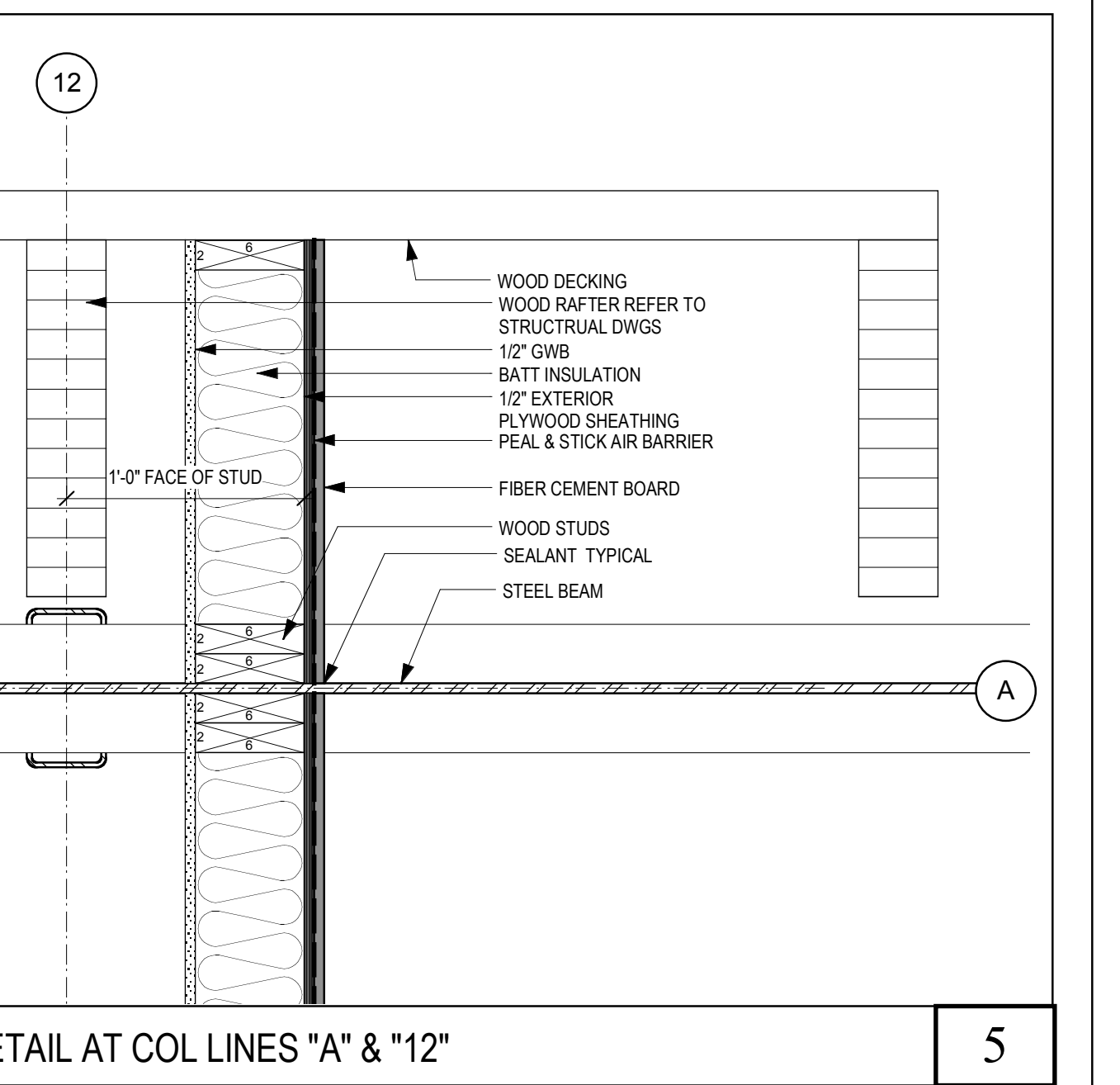
DETAIL AT COL LINES "B" & "6" 2



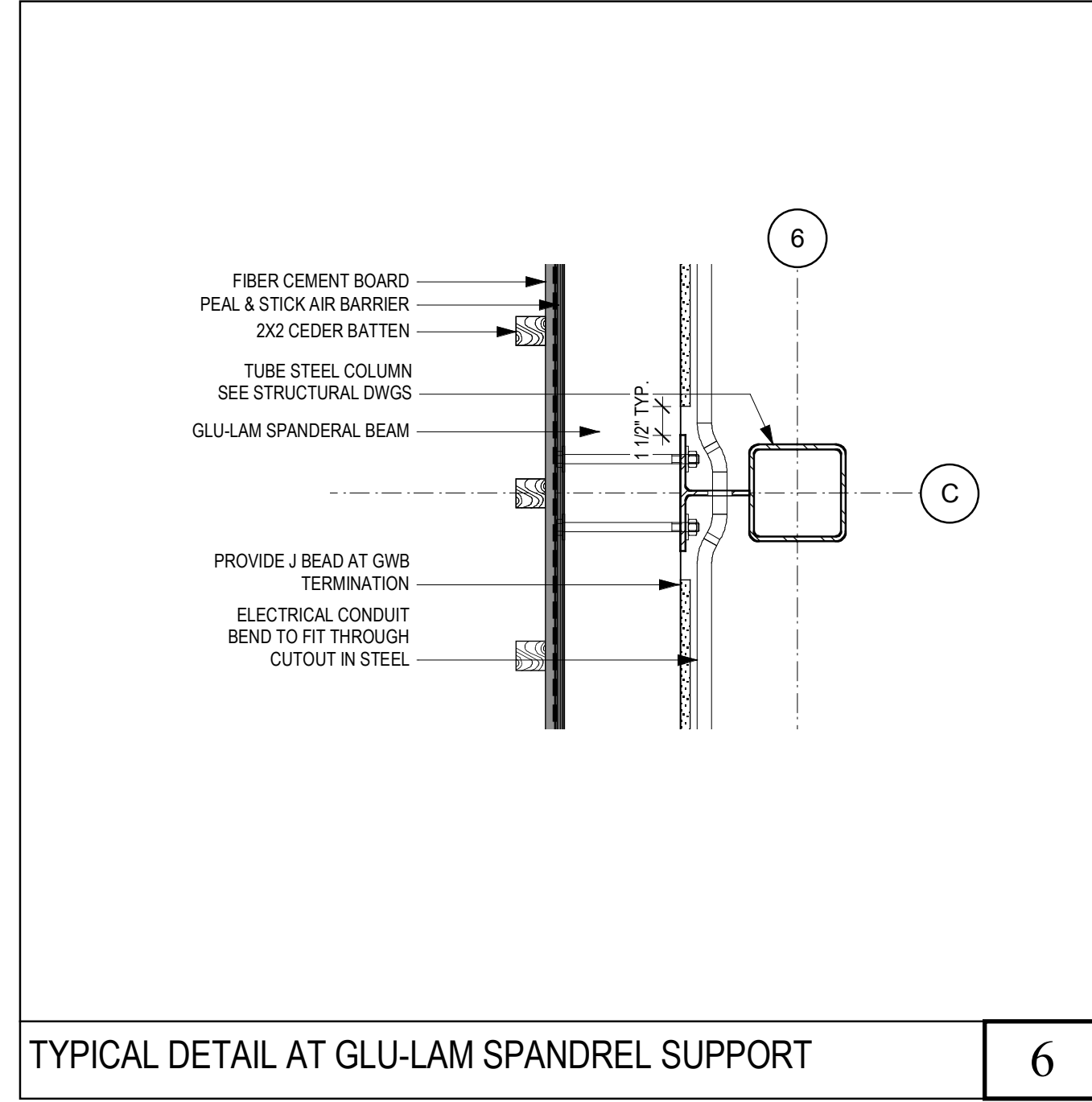
DETAIL AT COL LINES "B" & "10" 3



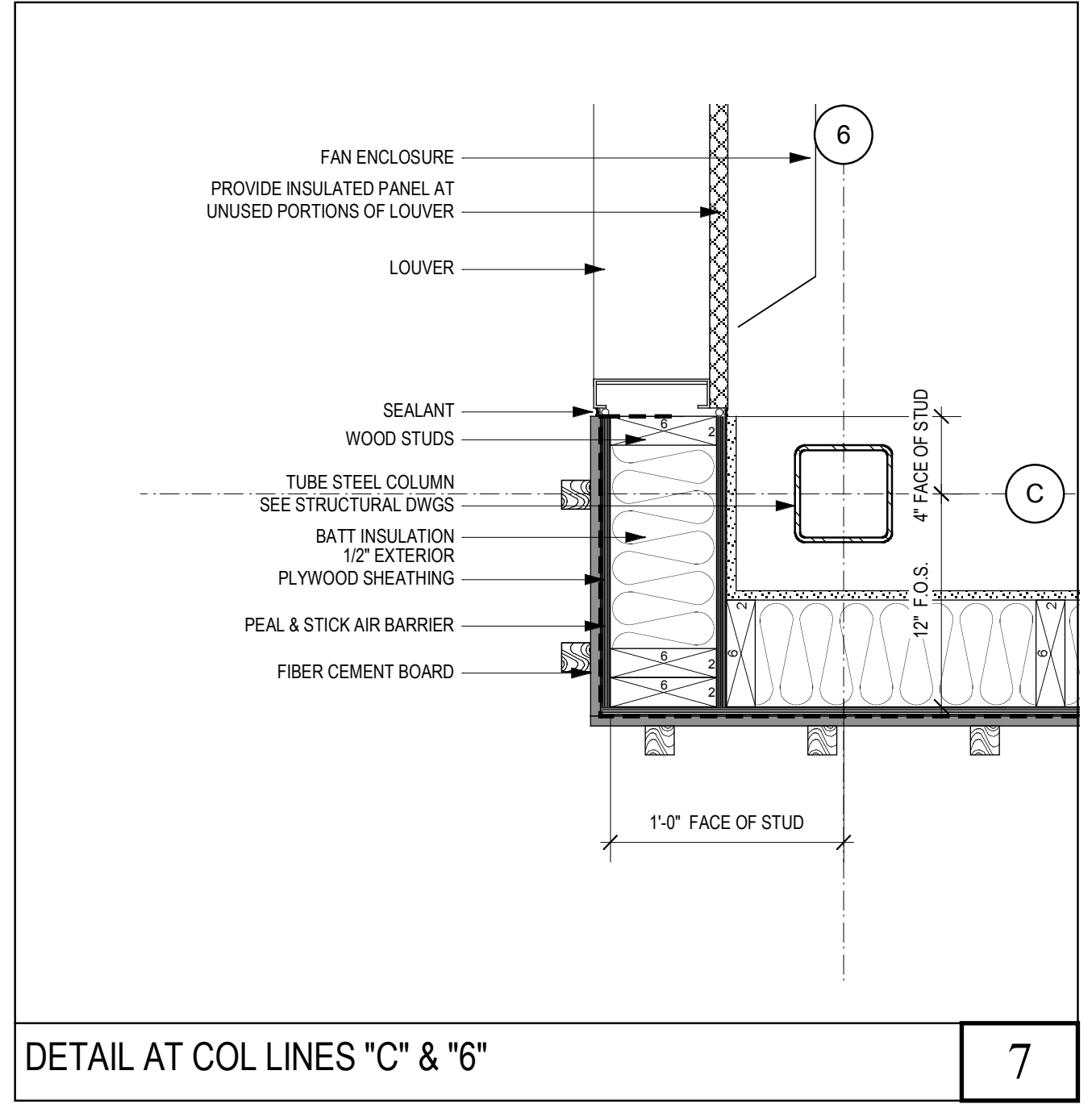
DETAIL AT COL LINES "B" & "11" 4



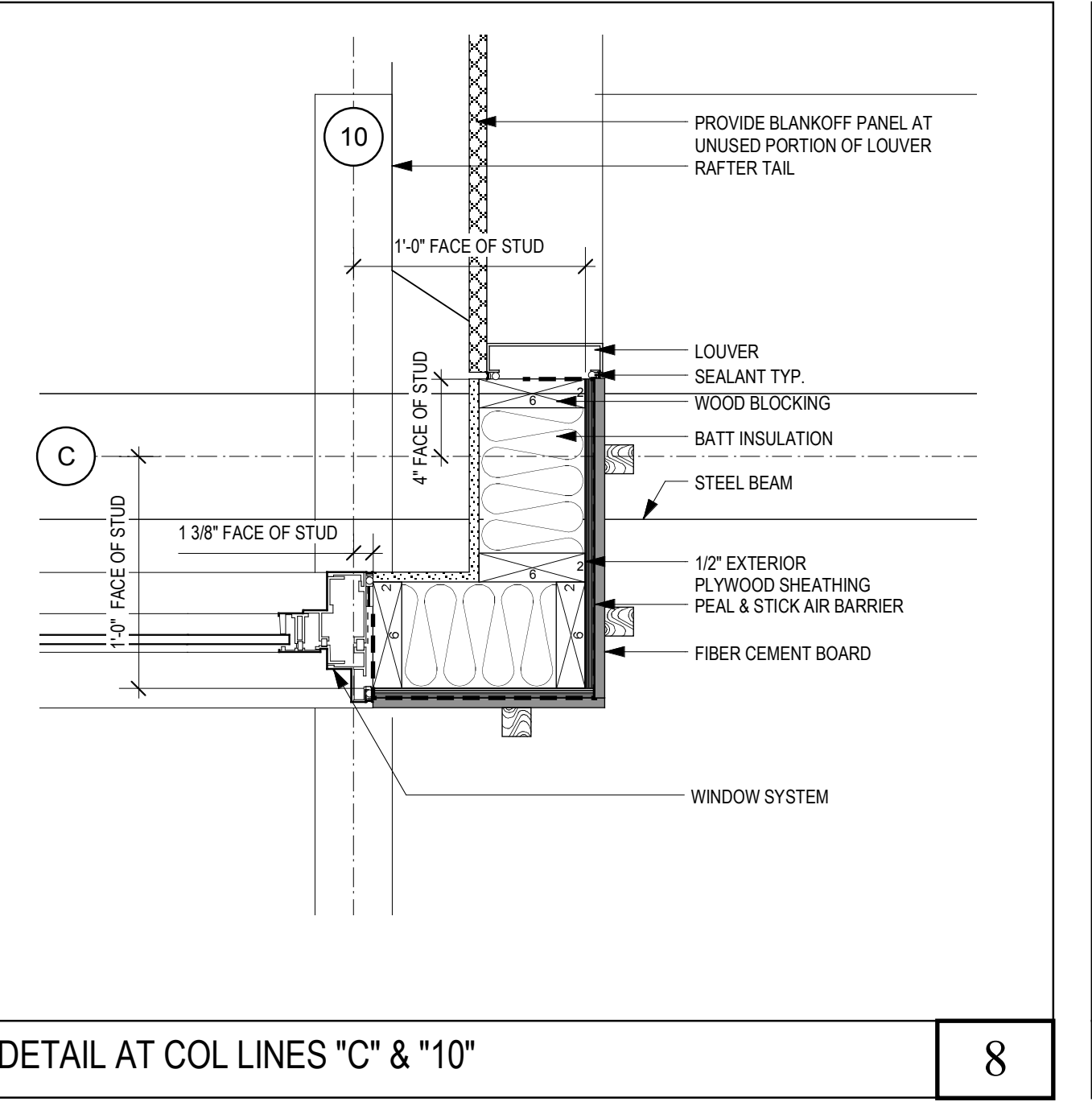
DETAIL AT COL LINES "A" & "12" 5



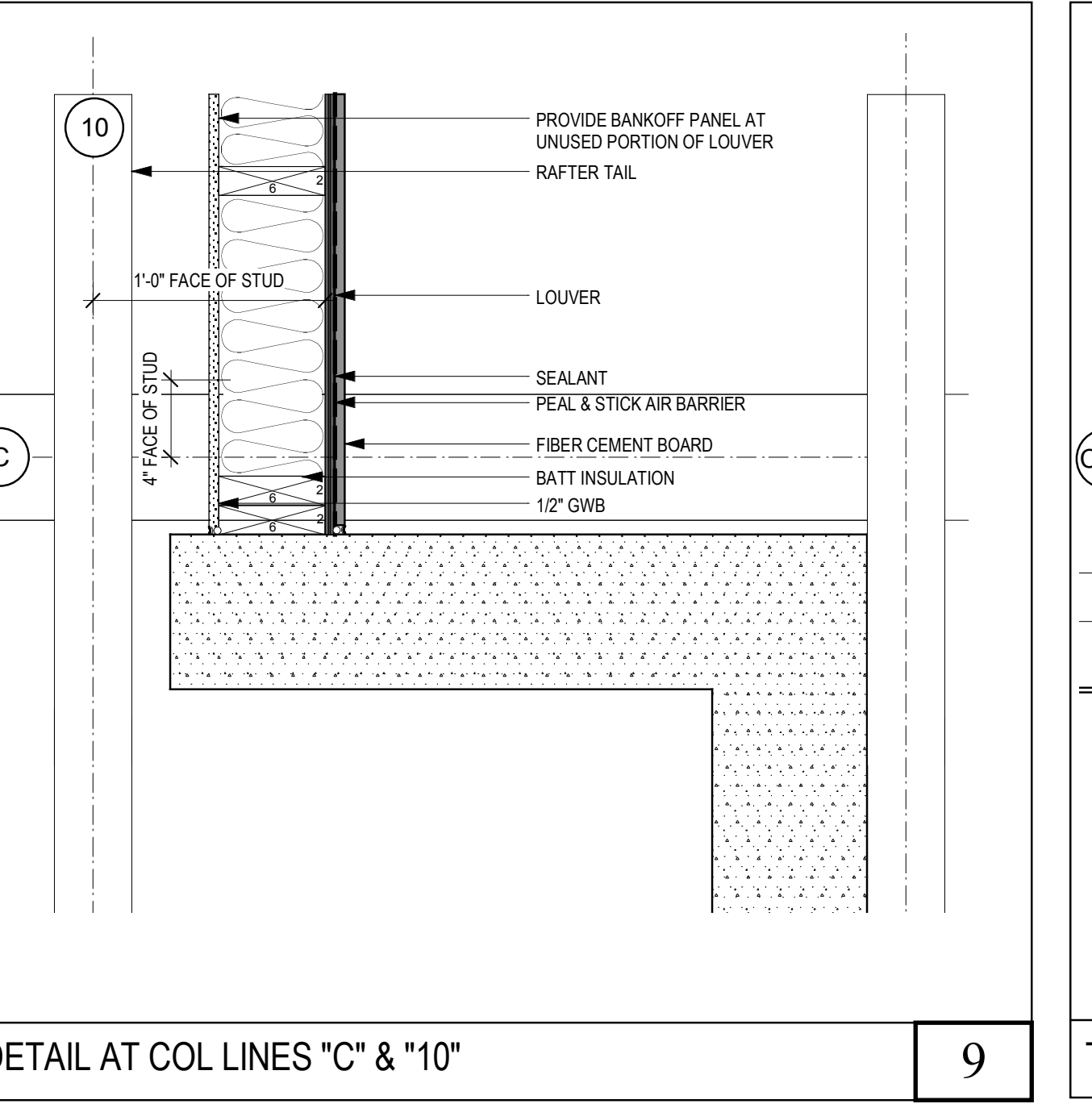
TYPICAL DETAIL AT GLU-LAM SPANDREL SUPPORT 6



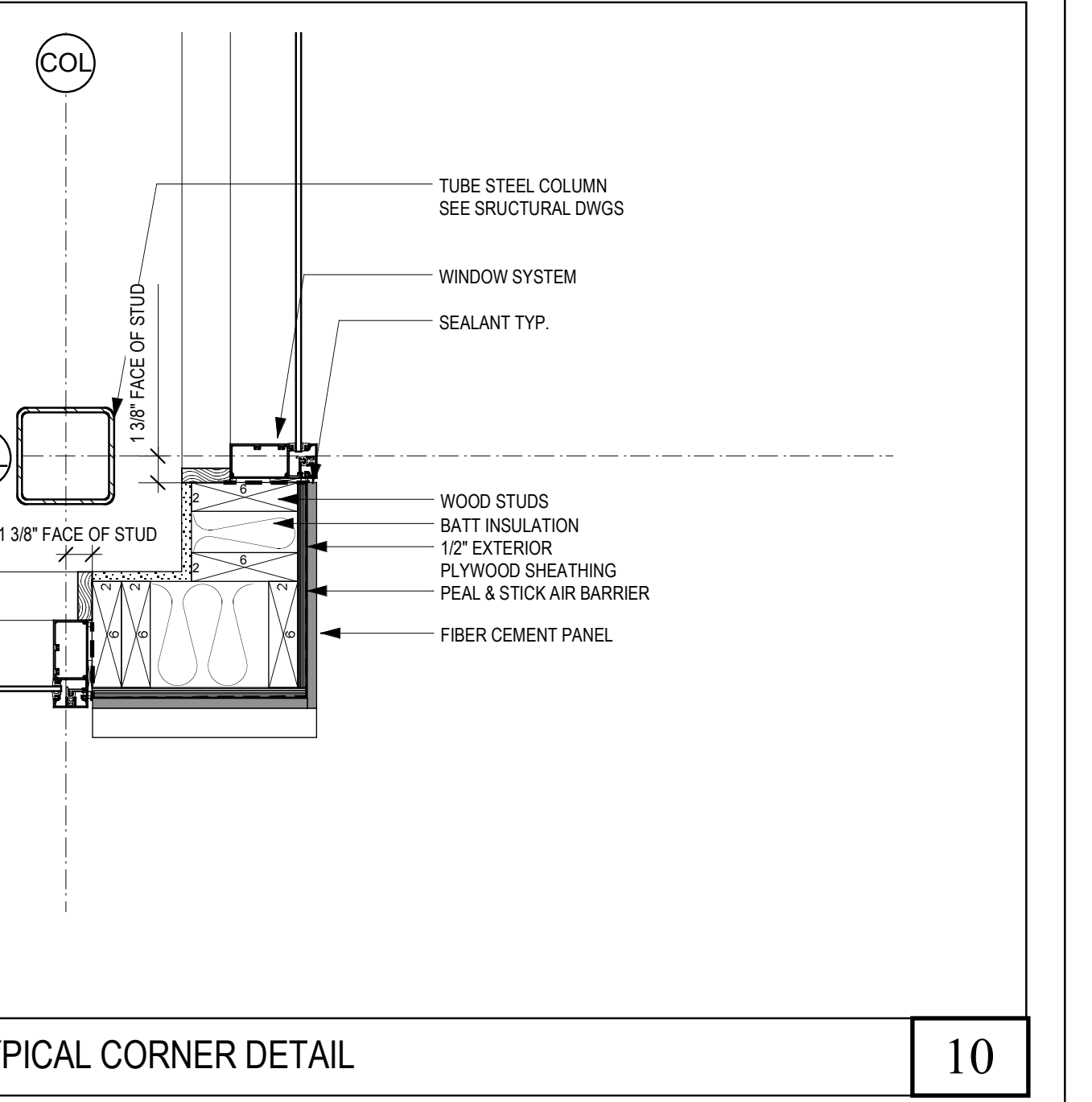
DETAIL AT COL LINES "C" & "6" 7



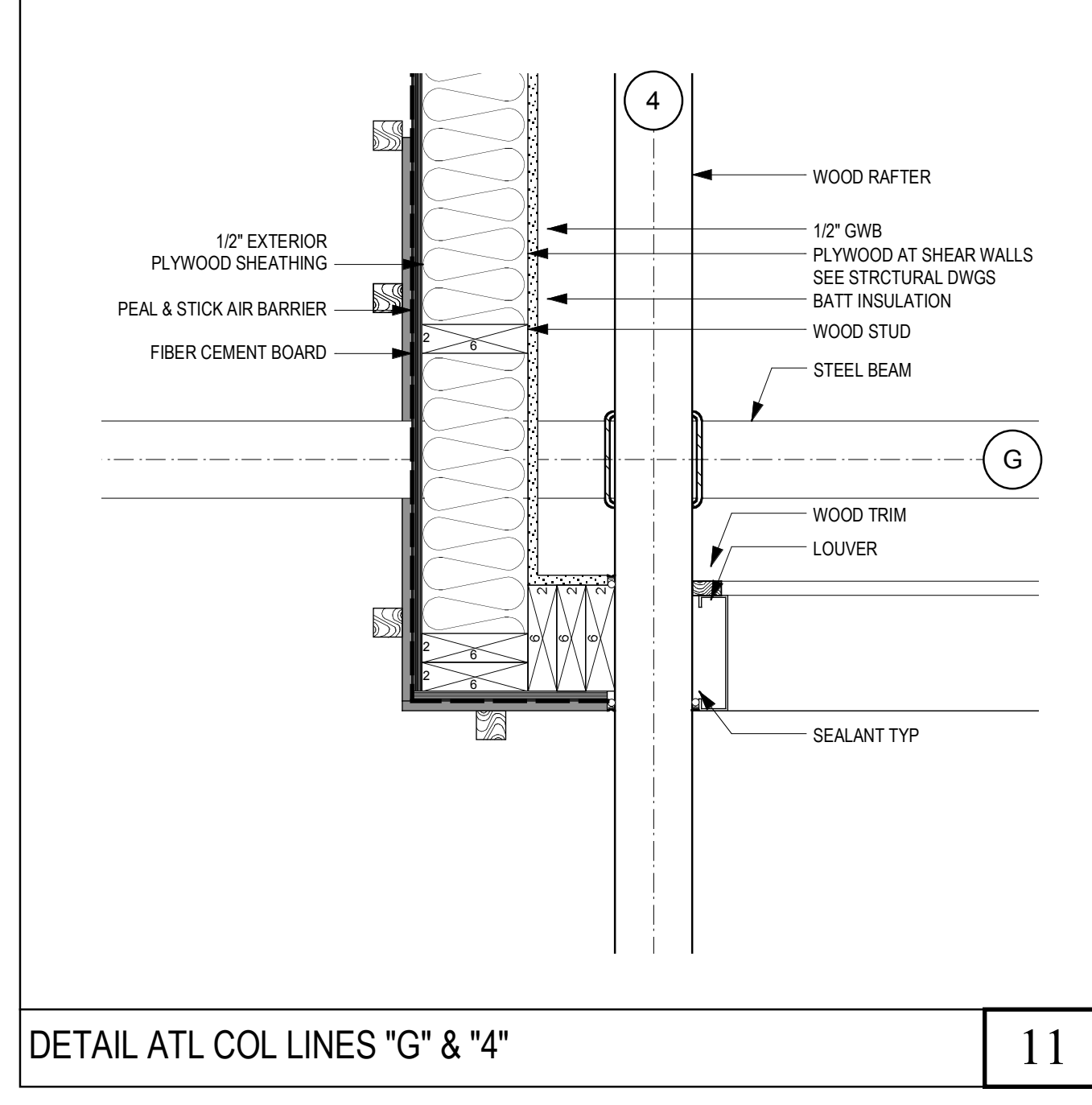
DETAIL AT COL LINES "C" & "10" 8



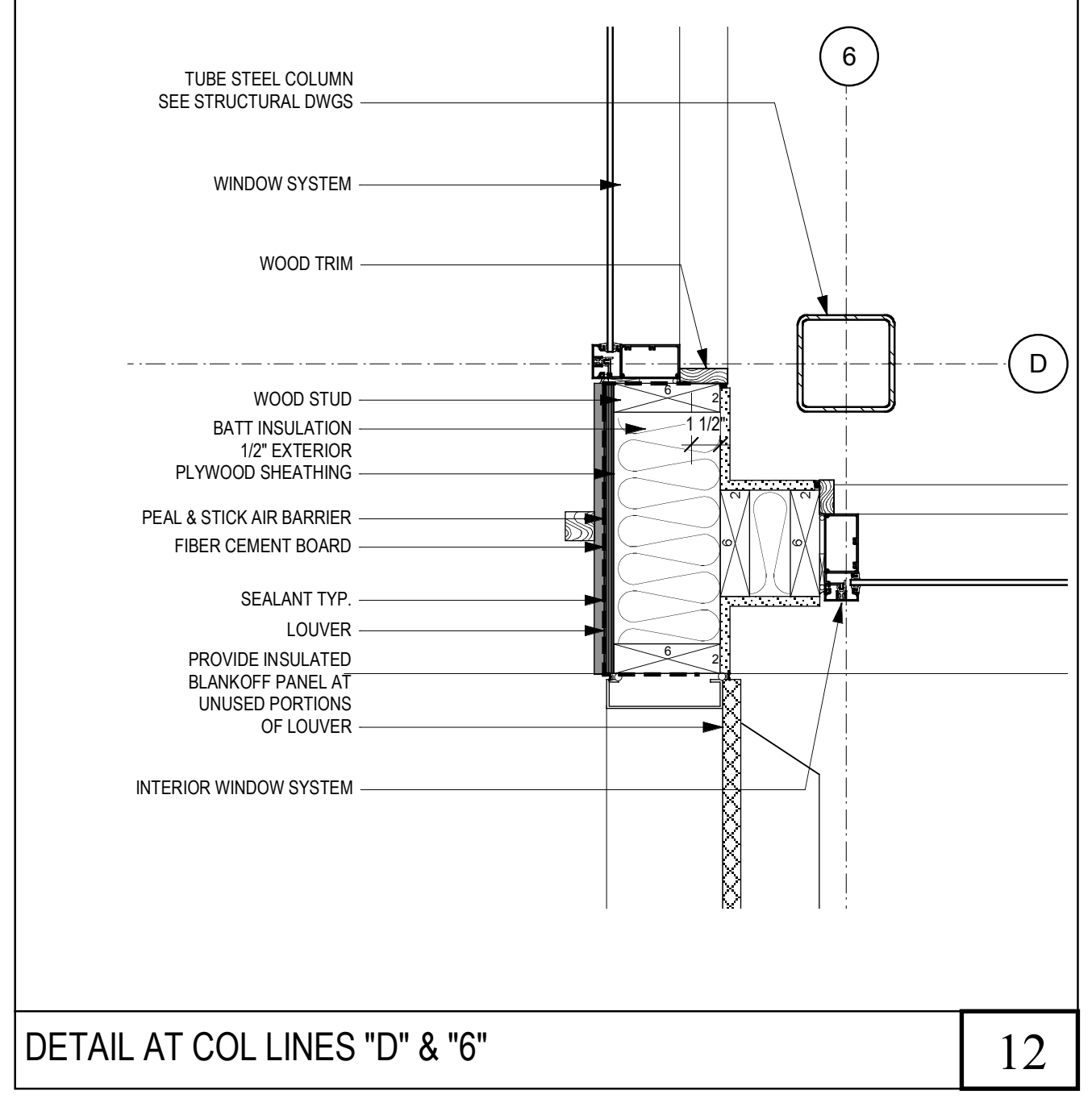
DETAIL AT COL LINES "C" & "10" 9



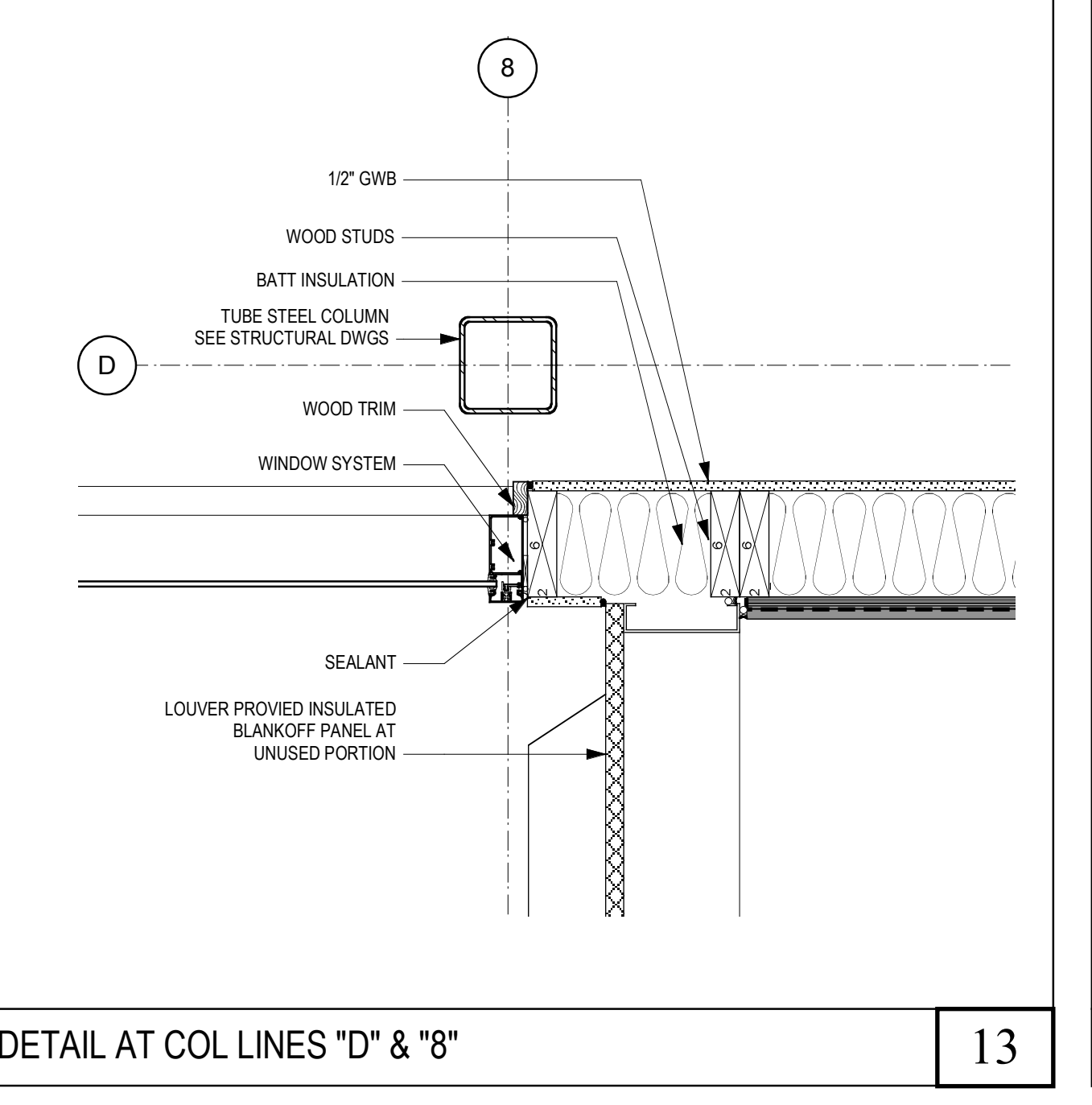
TYPICAL CORNER DETAIL 10



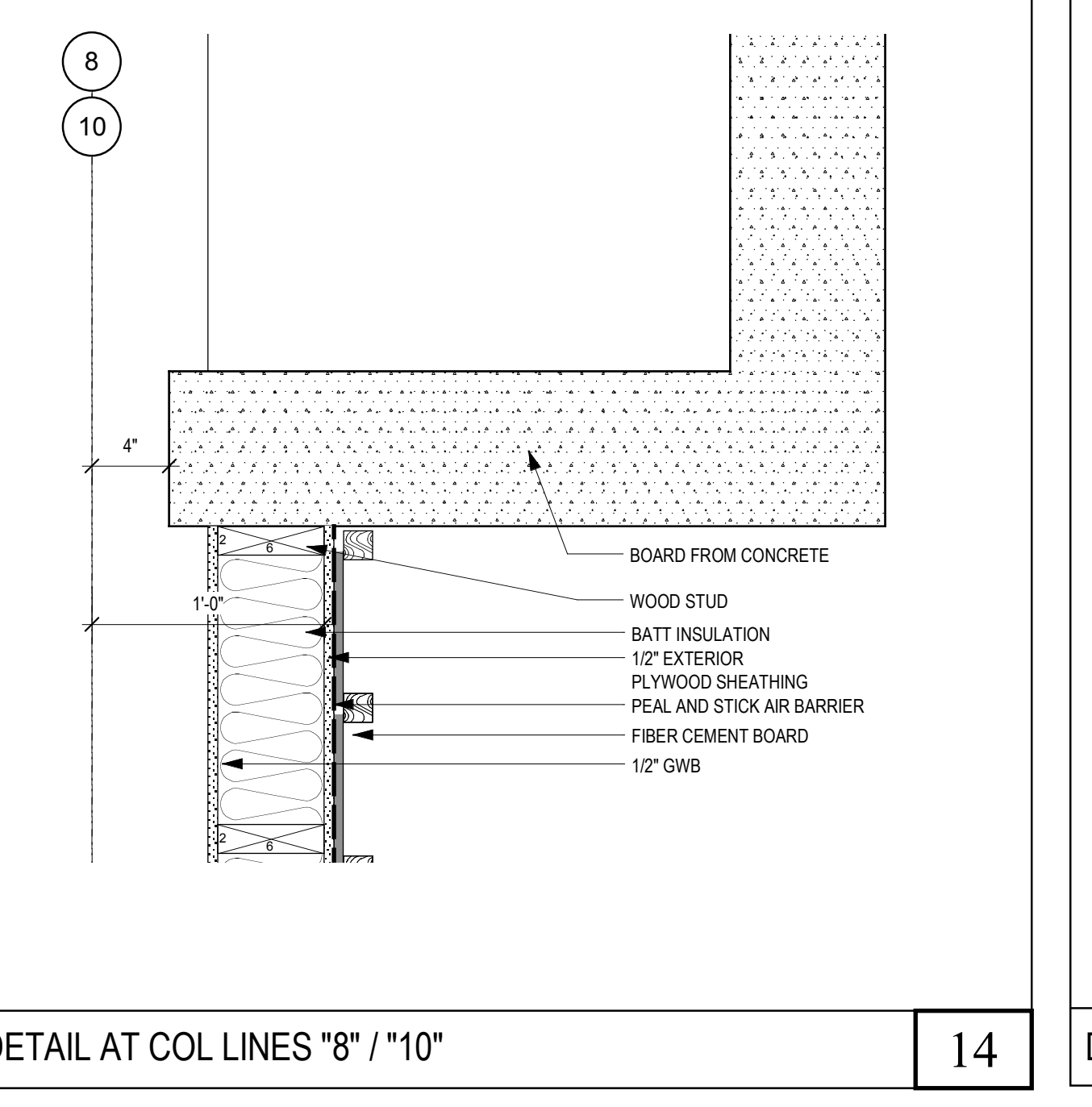
DETAIL AT COL LINES "G" & "4" 11



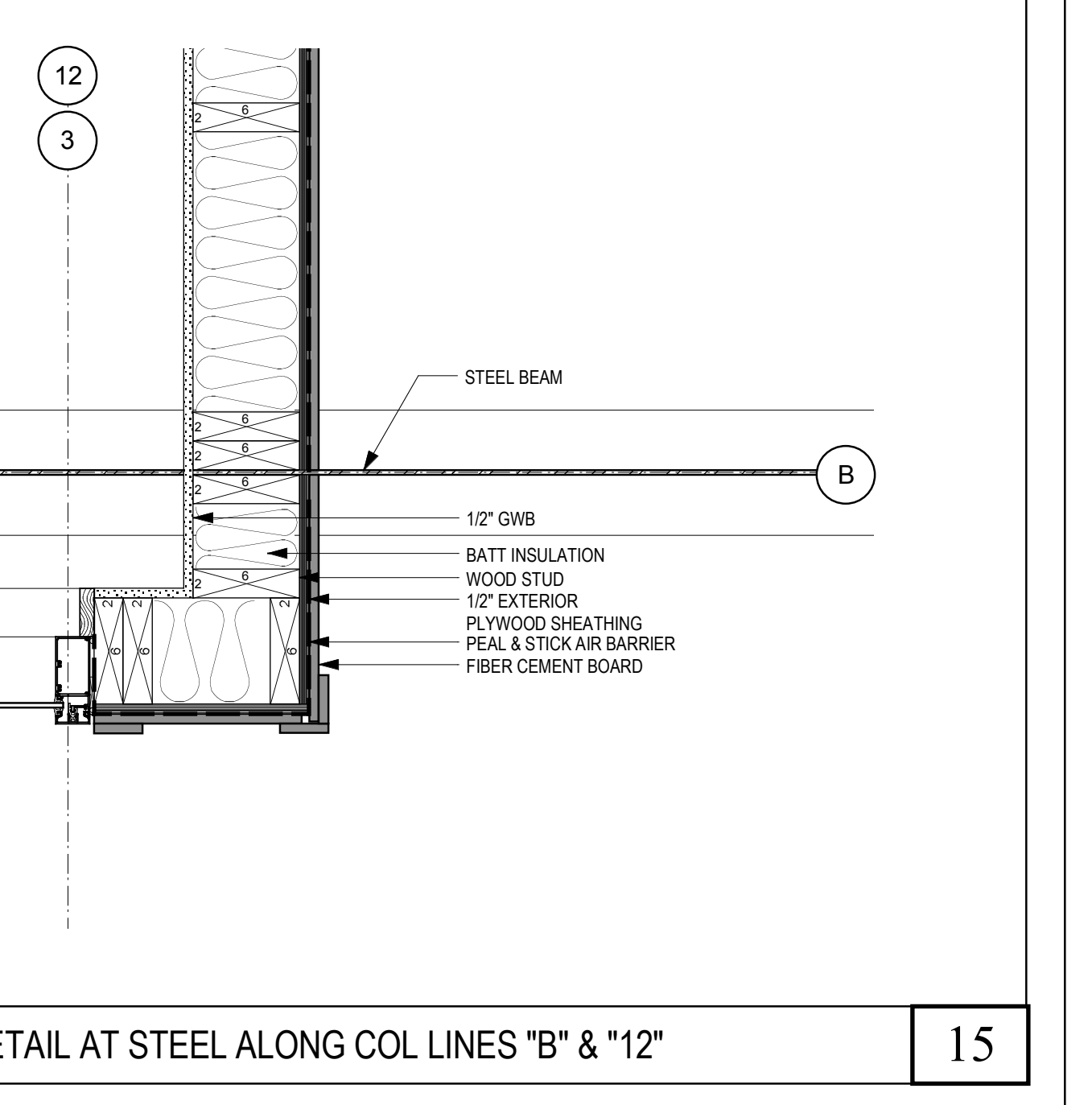
DETAIL AT COL LINES "D" & "6" 12



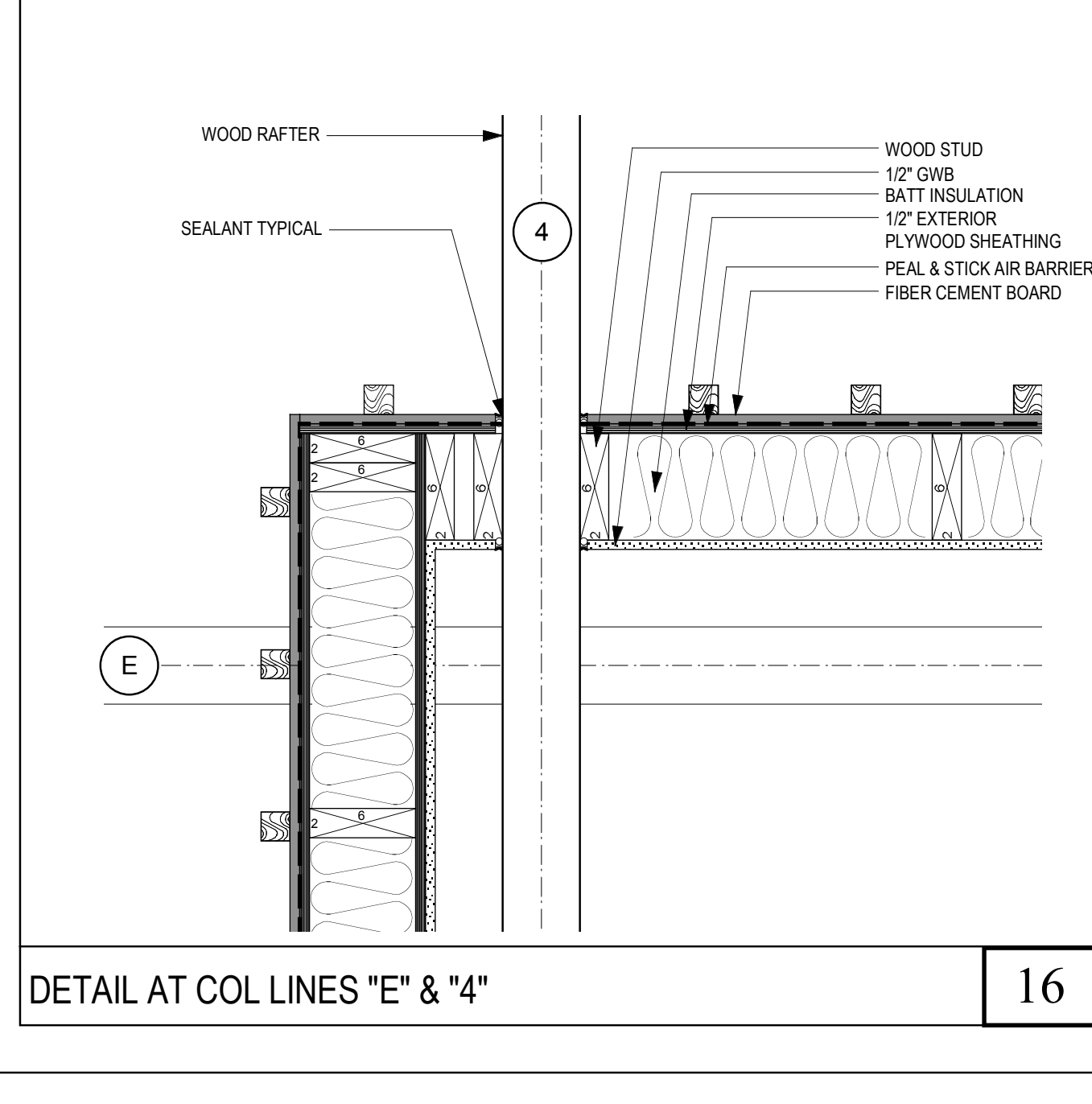
DETAIL AT COL LINES "D" & "8" 13



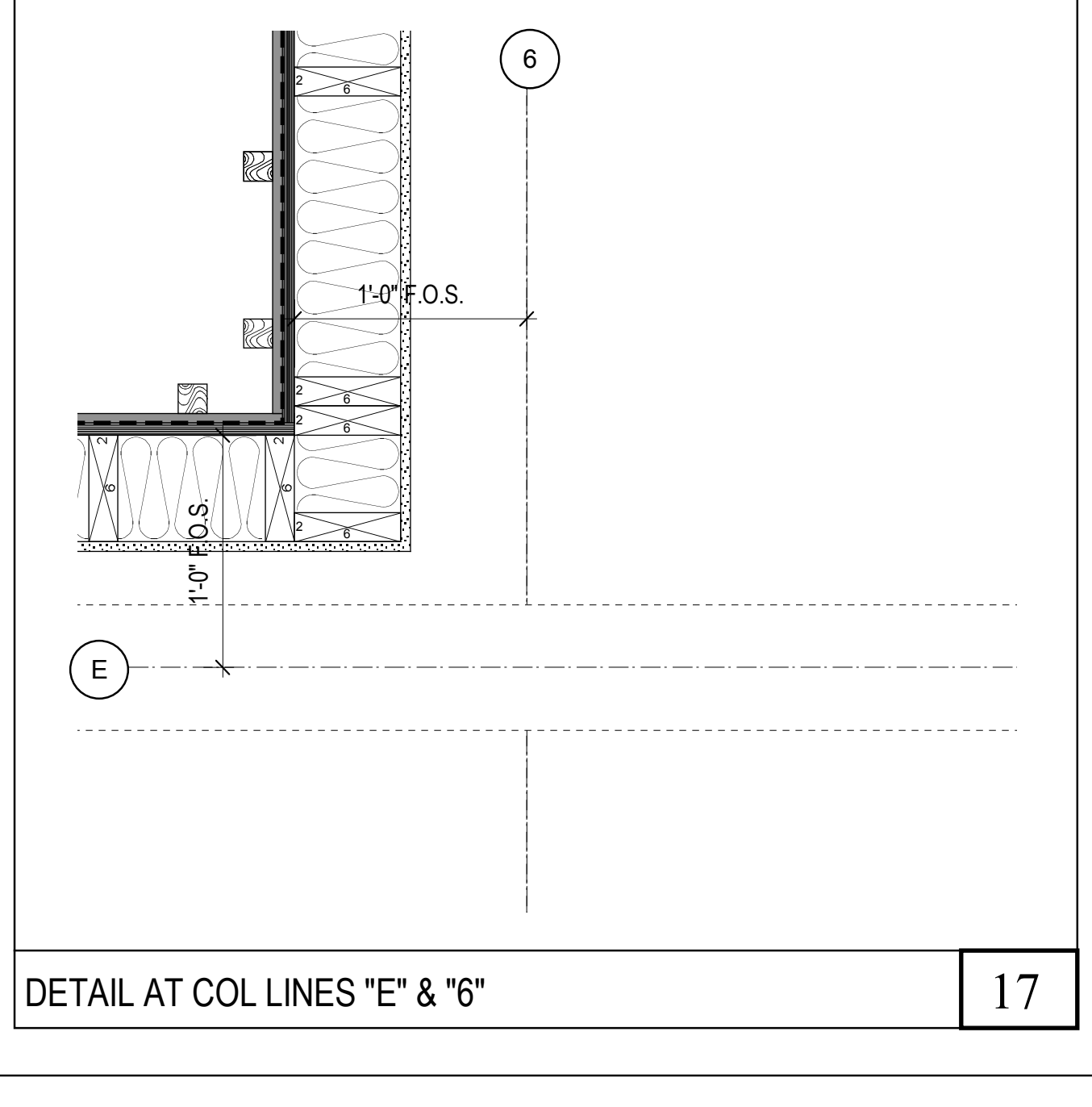
DETAIL AT COL LINES "8" & "10" 14



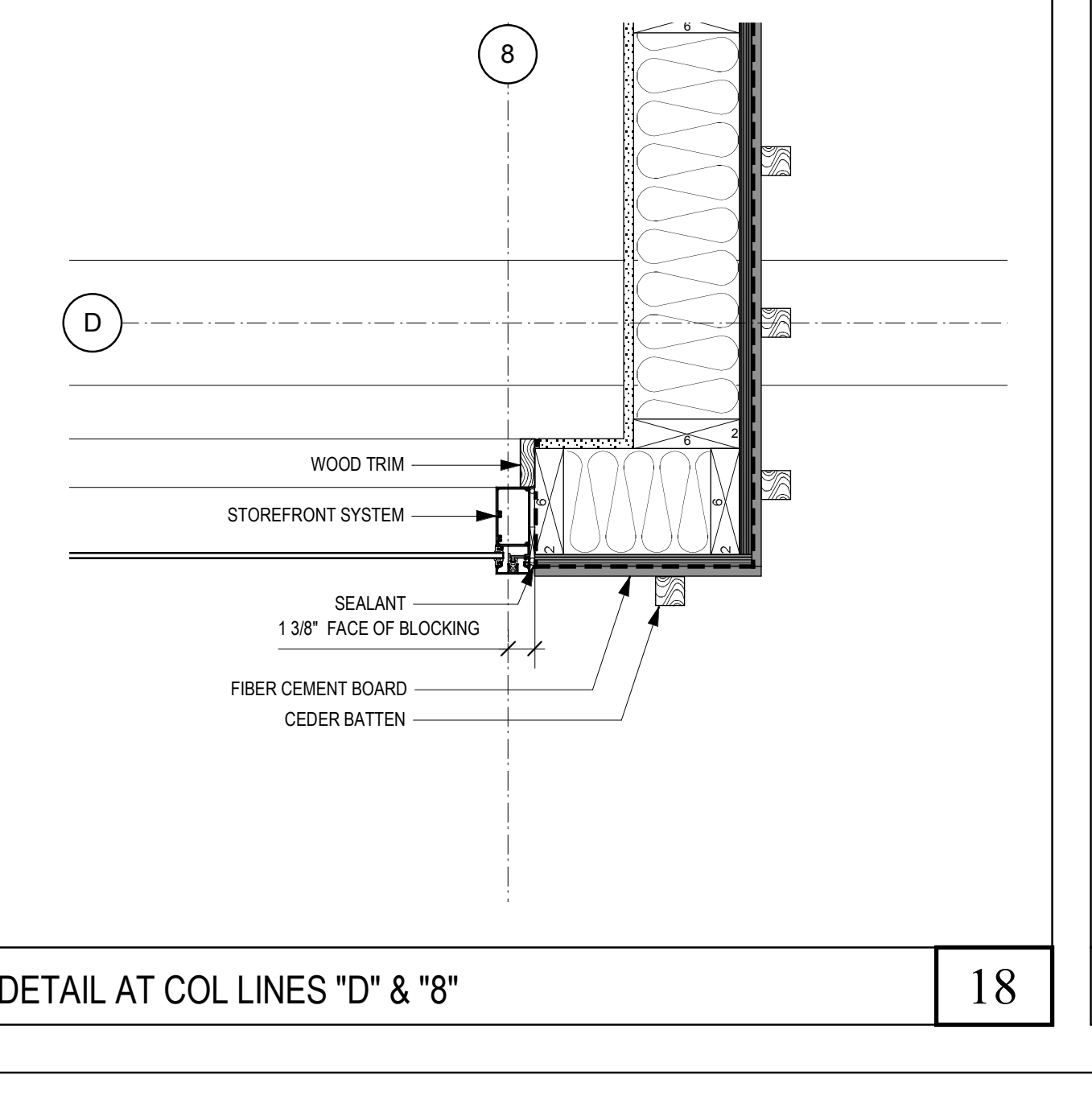
DETAIL AT STEEL ALONG COL LINES "B" & "12" 15



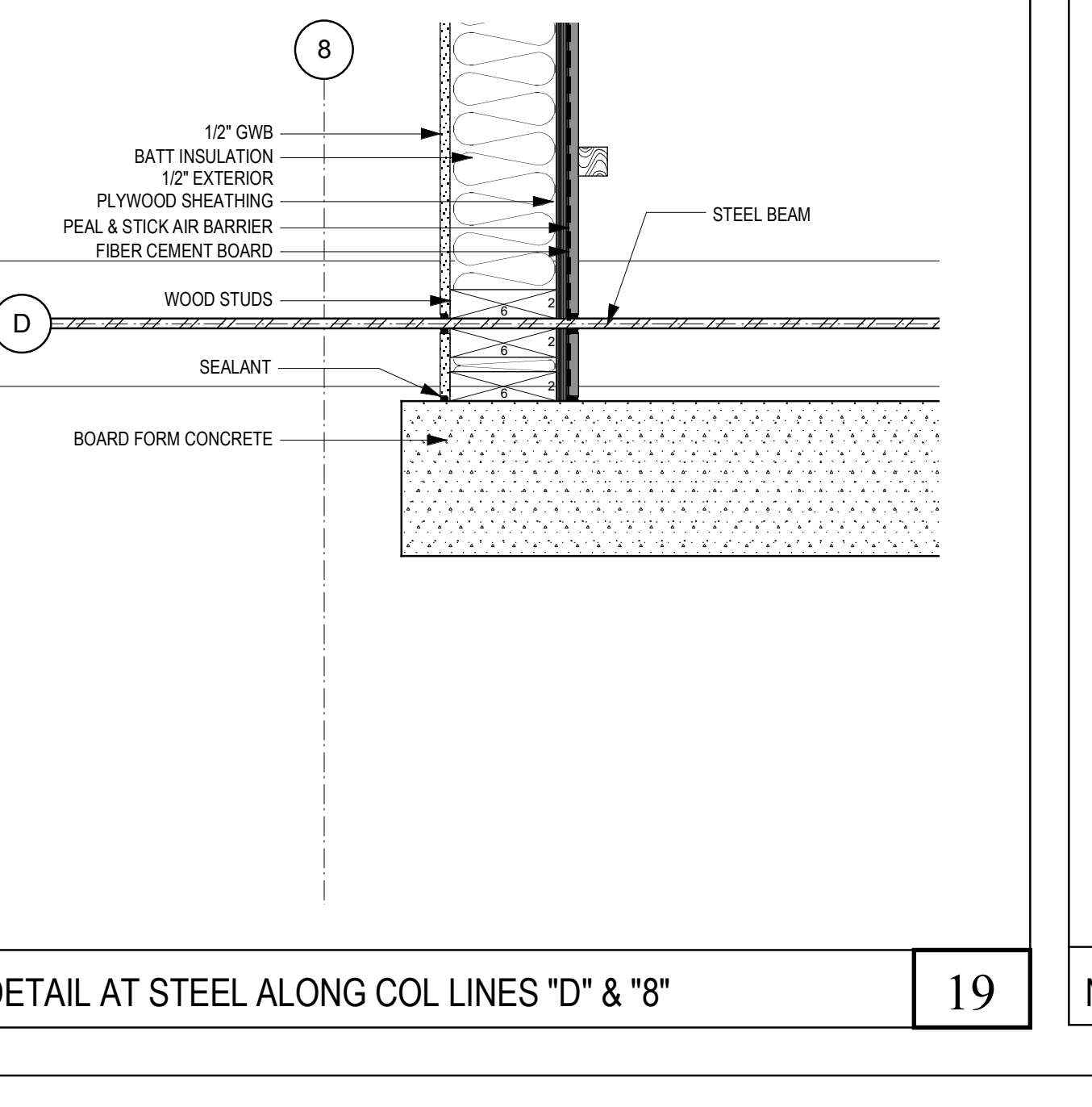
DETAIL AT COL LINES "E" & "4" 16



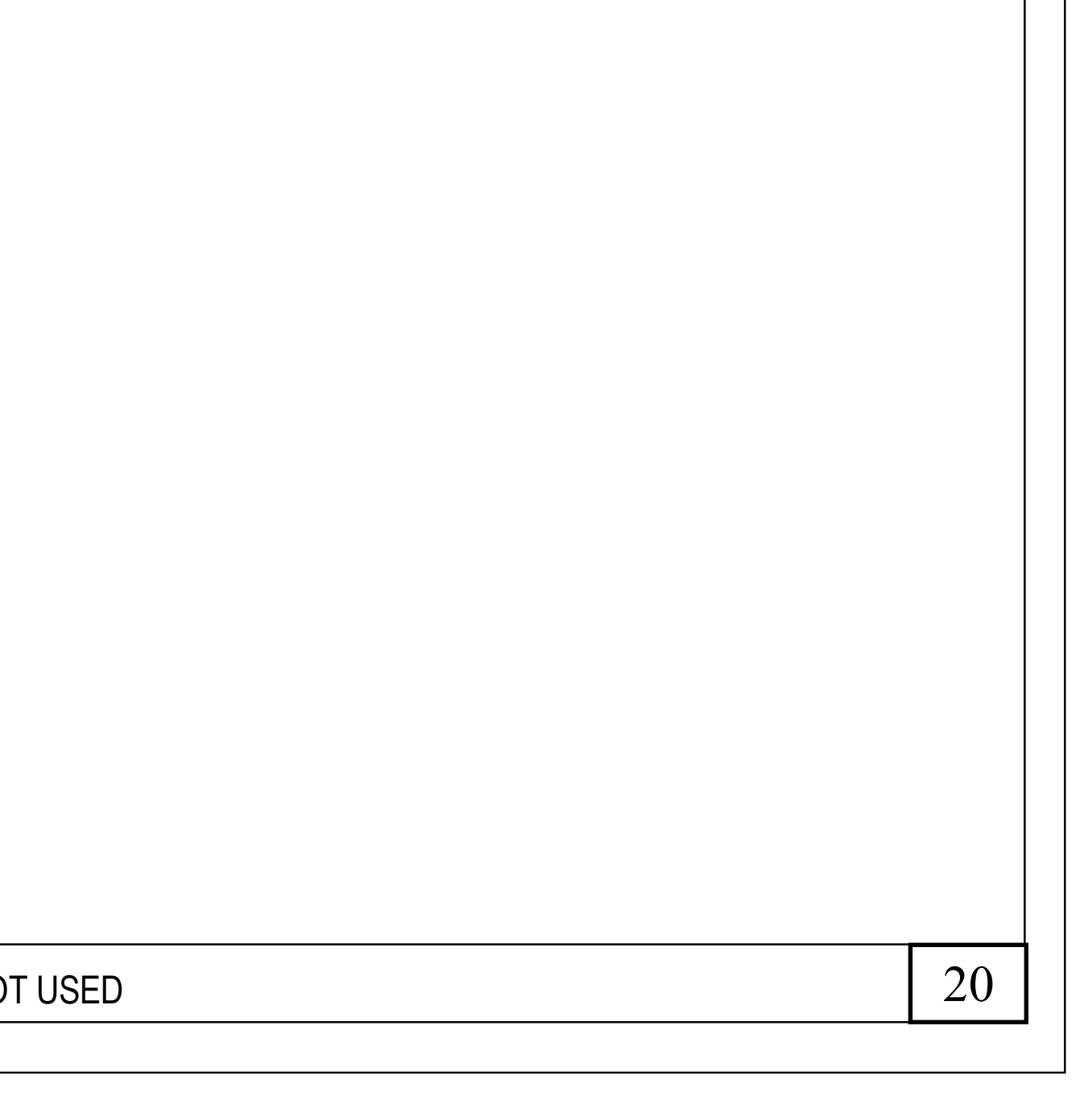
DETAIL AT COL LINES "E" & "6" 17



DETAIL AT COL LINES "D" & "8" 18



DETAIL AT STEEL ALONG COL LINES "D" & "8" 19



NOT USED 20