

ENERGY LAB

Hawai'i
Preparatory
Academy

Kamuela, Hawaii
TMK: 6-5-1: 33

FLANSBURGH ARCHITECTS

77 North Washington Street
Boston, Massachusetts 02114
617.367.3970 tel
617.720.7873 fax
www.flaarchitects.com

Architecture
Master Planning
Space Planning
Interior Design

PROJECT MANAGEMENT
Pa'ahana Enterprises, LLC
P.O. Box 109
Kealahou, HI 9675
808.323.2304 tel/fax

SUSTAINABILITY
Buro Happold Consulting Engineers PC
100 Broadway, 23rd Floor
New York, NY, 10005
212.334.2025 tel

CIVIL ENGINEERING
Belt Collins Hawaii Ltd.
2153 North King Street, Suite 200
Honolulu, Hawaii 96819
808.521.5361 tel
808.538.7819 fax

STRUCTURAL ENGINEERING
Walter Vorfeld & Associates
10 Uliana Street
Makawao, Maui, HI 96768
808.572.3535 tel
808.573.3616 fax

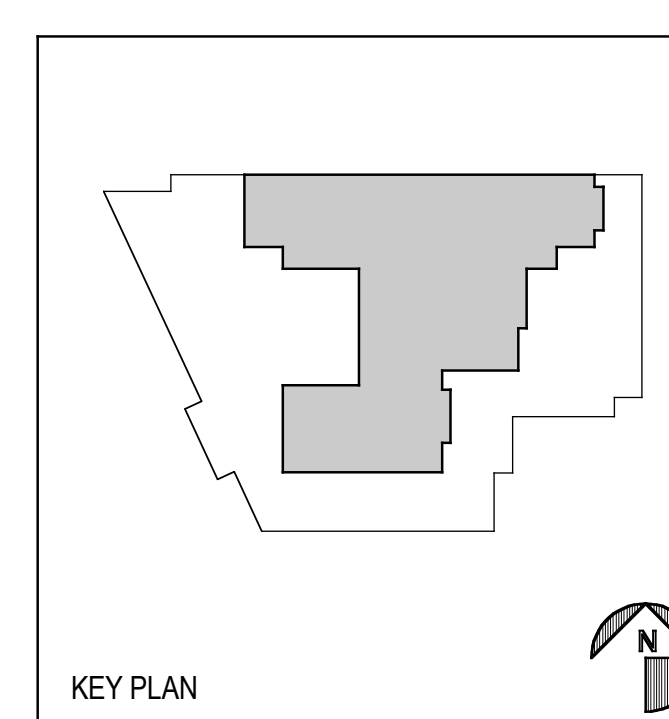
MECHANICAL ENGINEERING
Hakalau Engineering, LLC
PO Box 252
Hakalau, Hawaii 96710
808.961.6206 tel

ELECTRICAL ENGINEERING
Wallace T. Oki, PE, Inc.

This work was performed by me or under my supervision and construction of this project will be under my observation (observation of construction as defined in section 10-115.2 of the rules and regulations of the Board of Professional Engineers, Architects and Surveyors of the State of Hawaii).

Duncan P. McClelland, AIA
Architect License No. 13148, Expires 4/30/2010

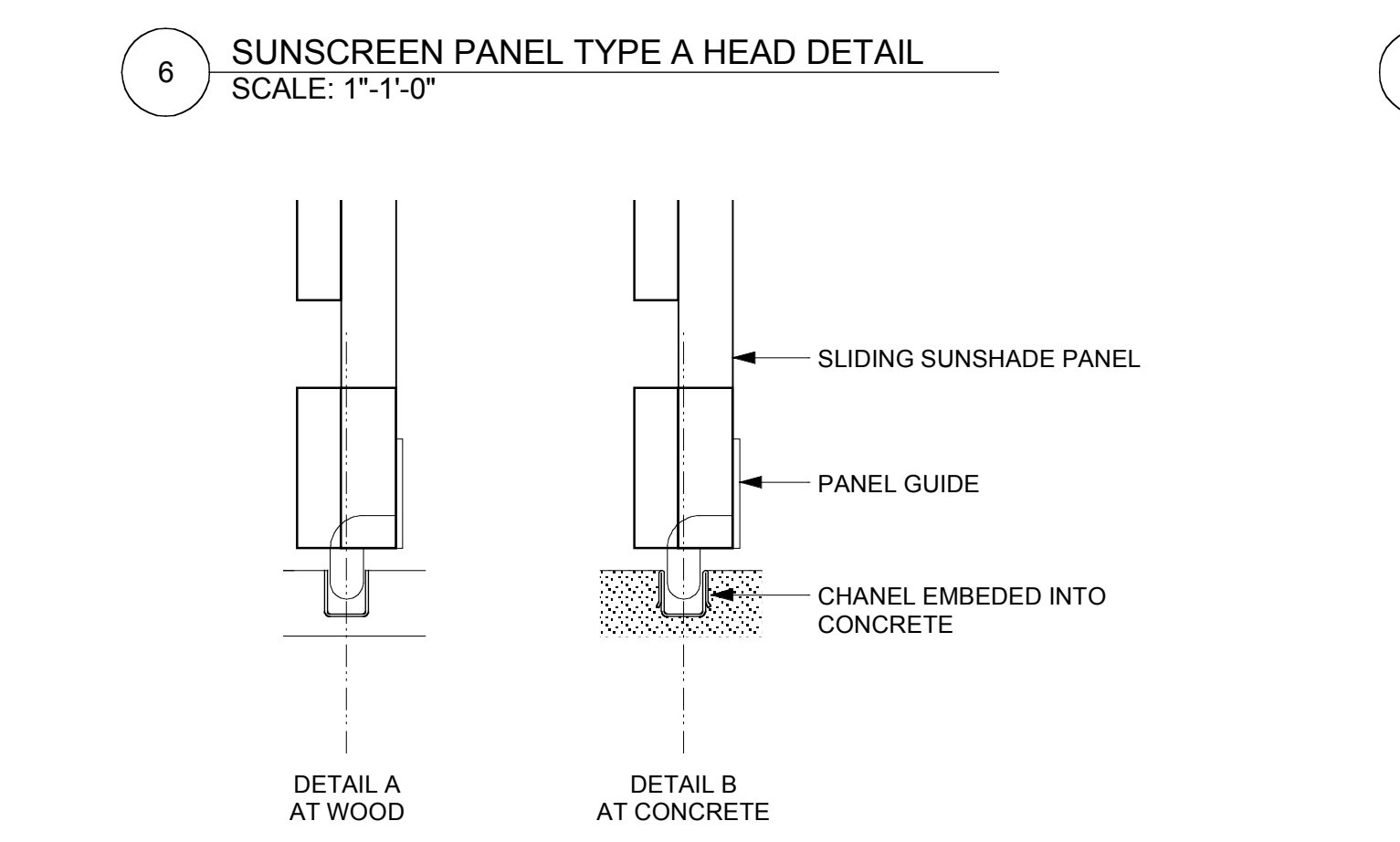
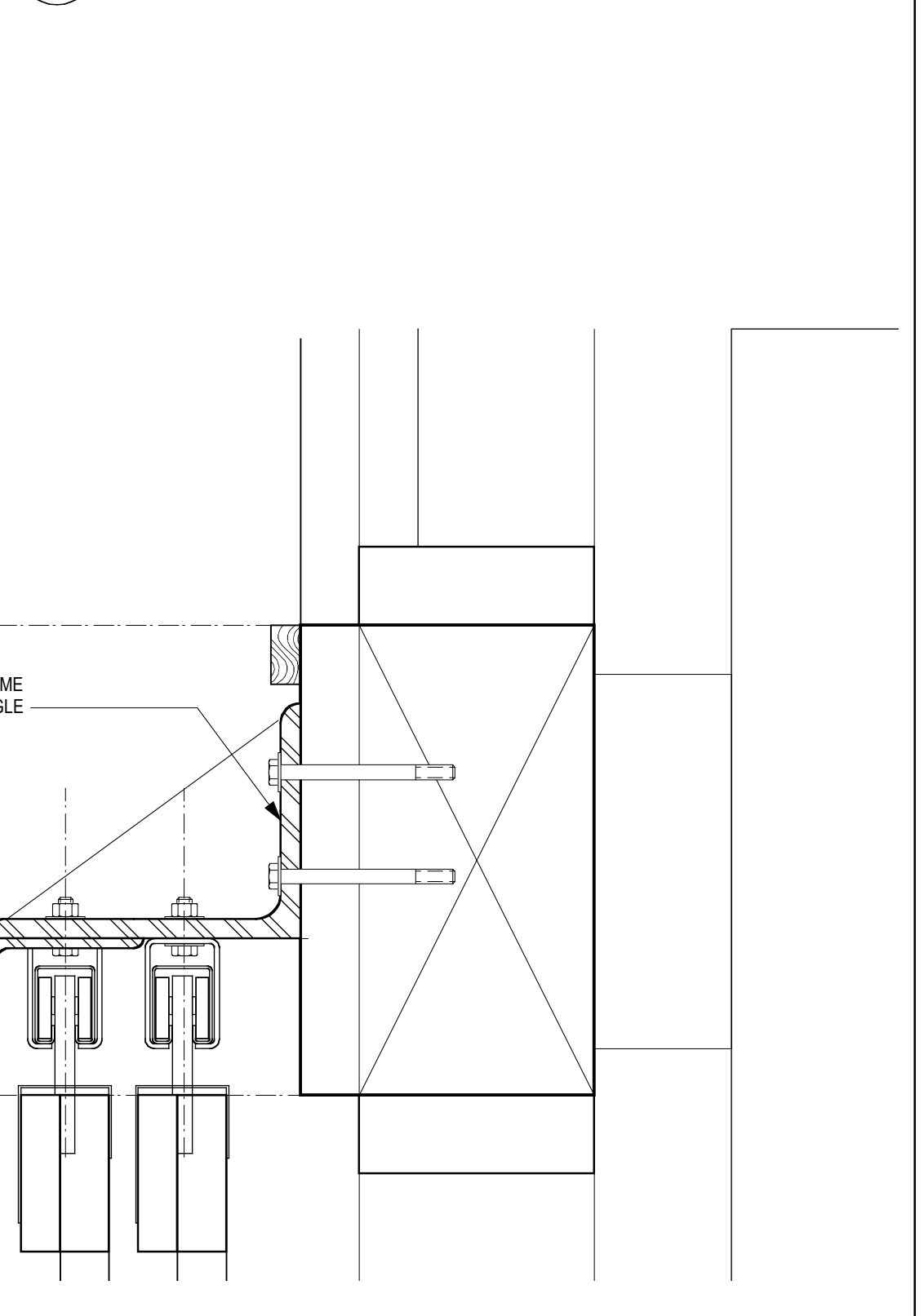
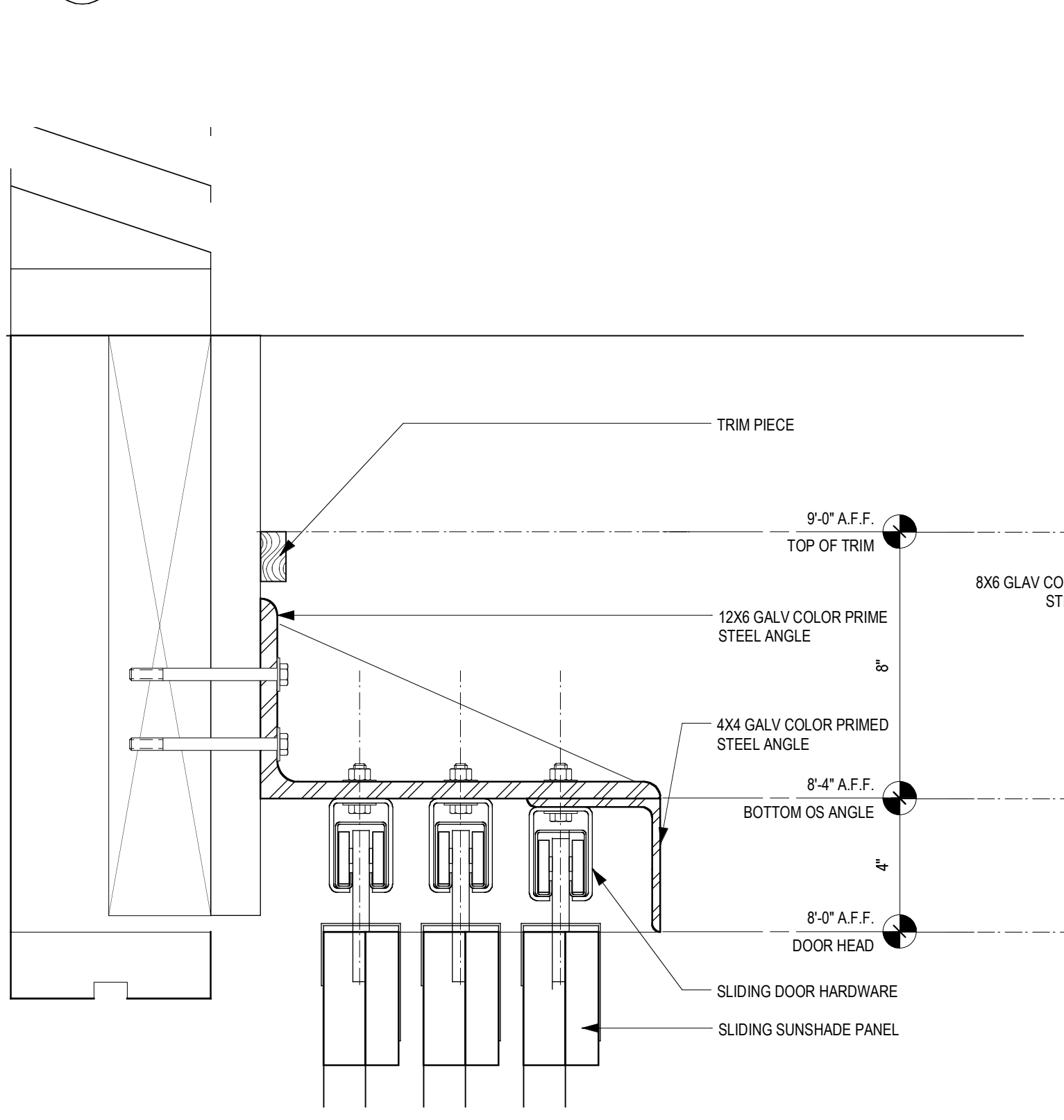
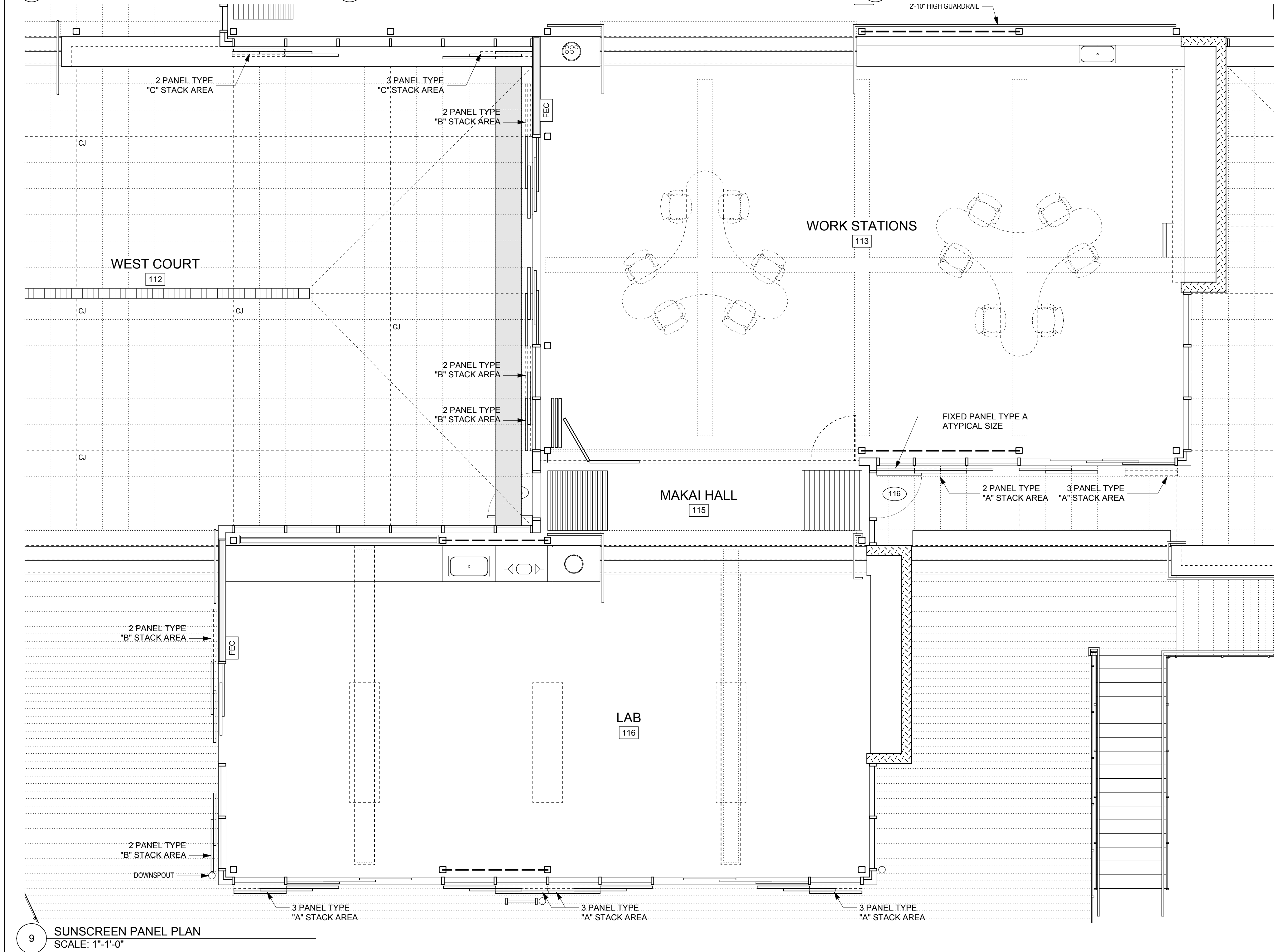
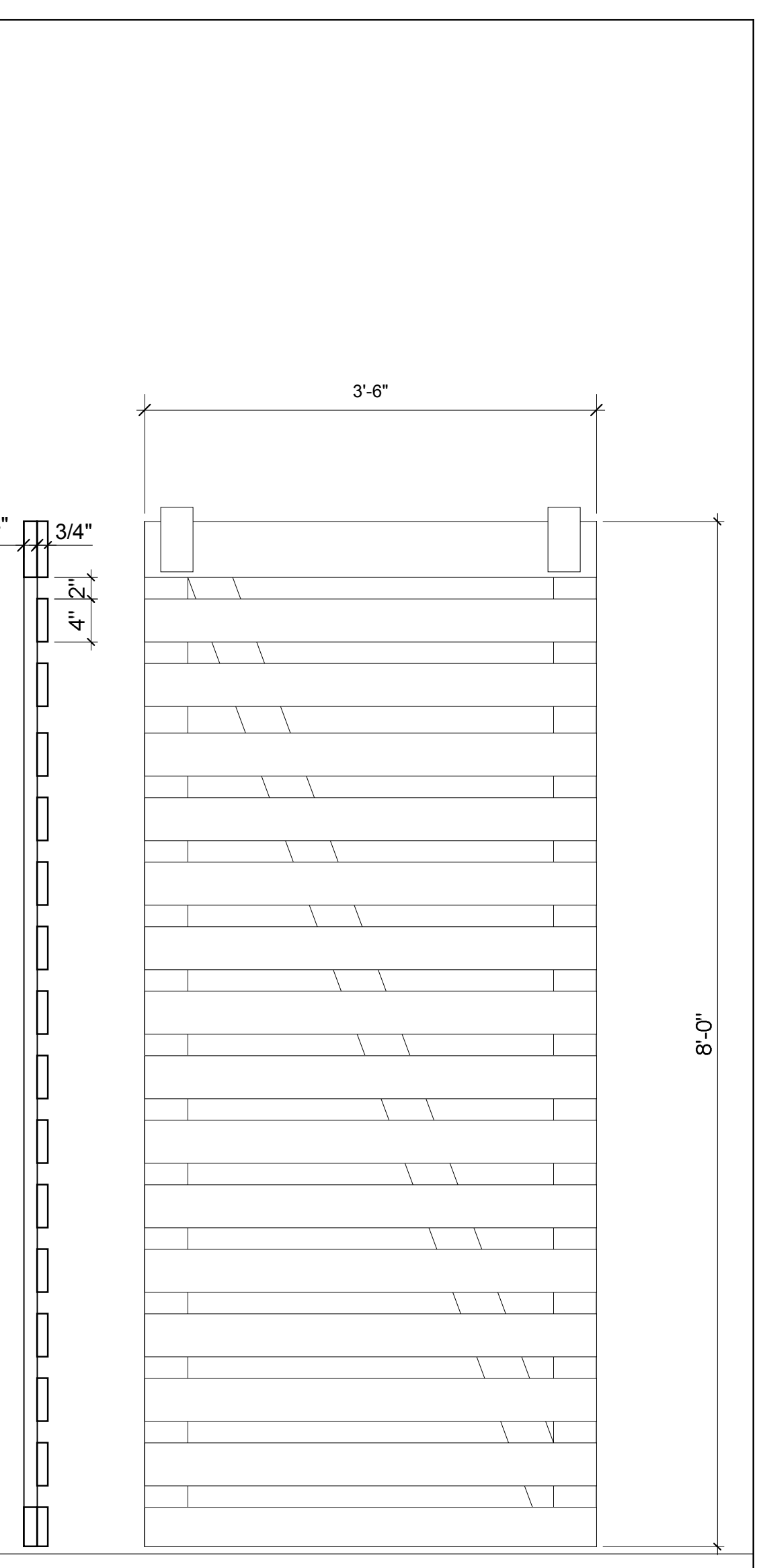
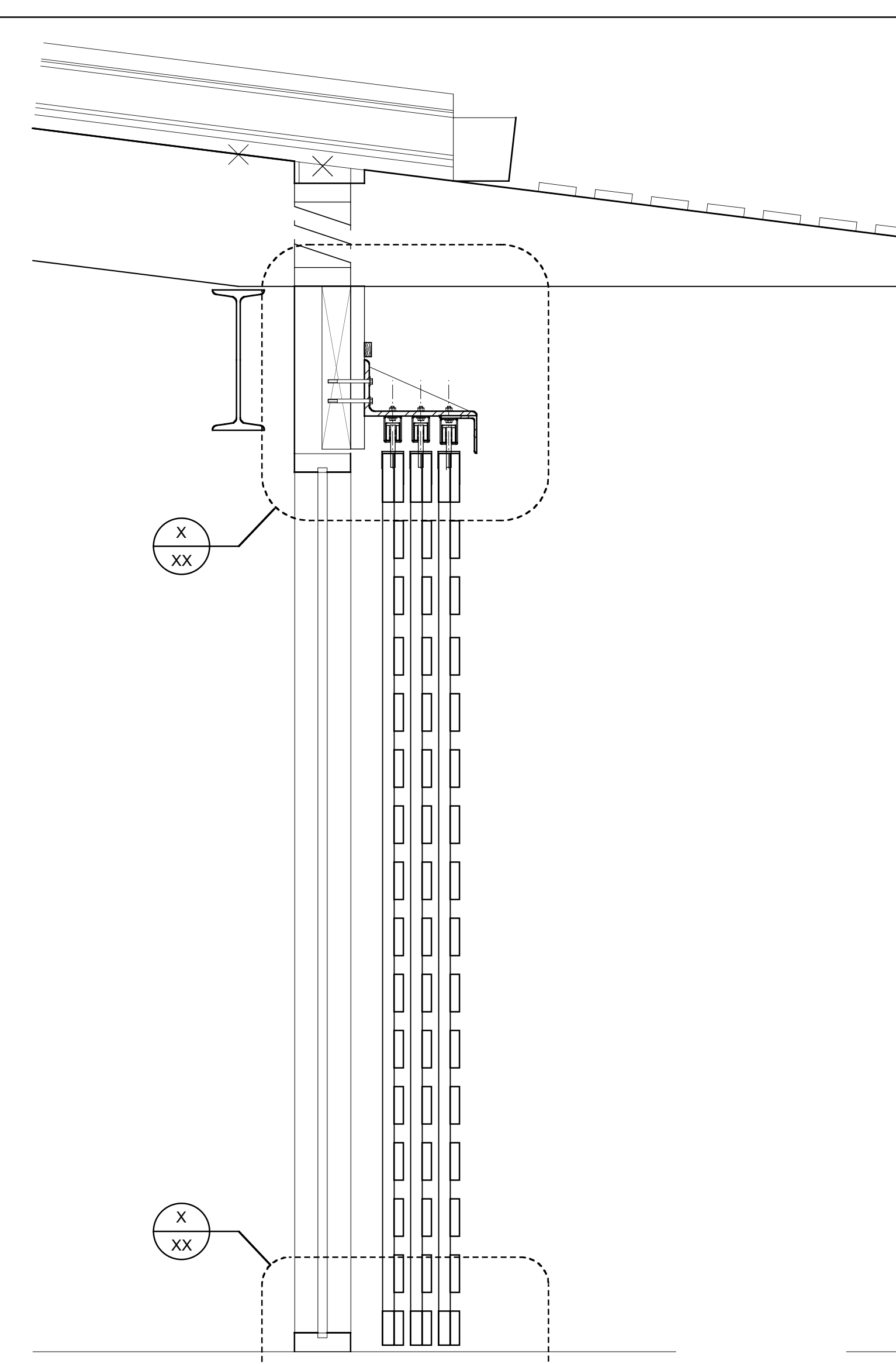
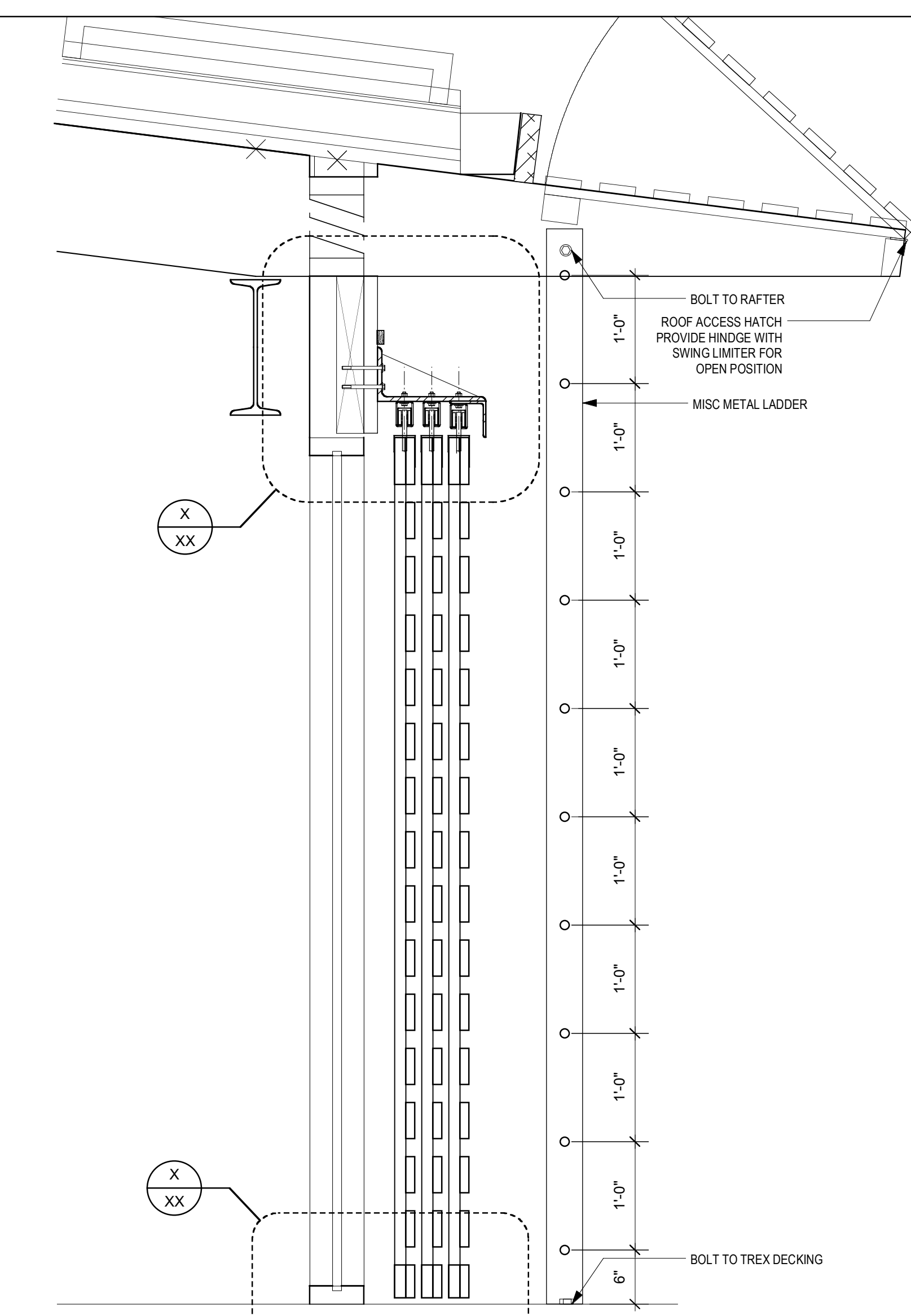
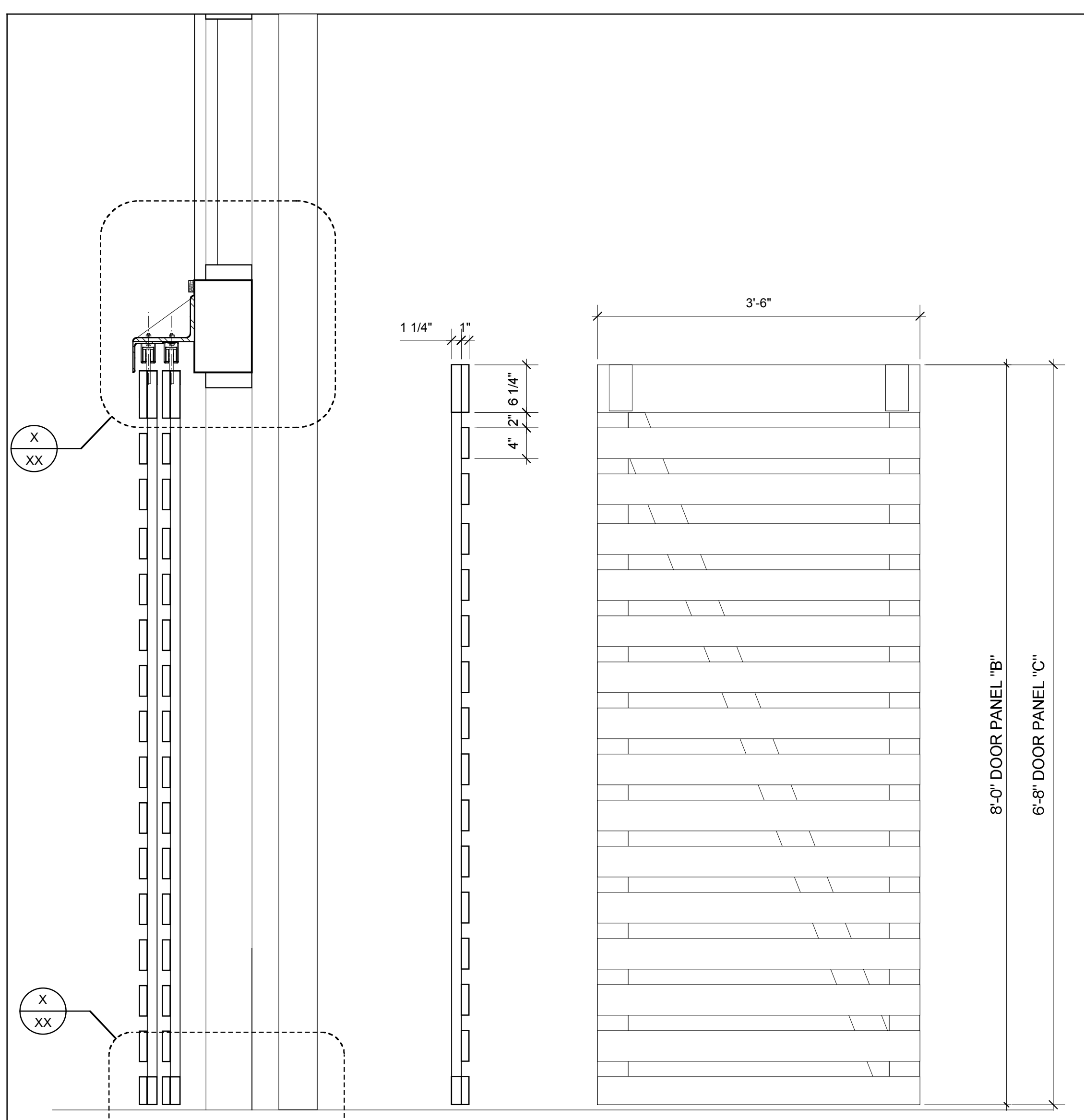
Add. No.	Description of Revision	Date



SUN SCREENS

Drawn by:	BF	Job Number:	2804.00
Checked by:	CB	Scale:	
Plot Date:	16 JAN 2009	Issue Date:	19 JAN 2009

A
6.3



HARDWARE:
STRAIGHTAWAY 320 SLIDING DOOR SYSTEM
DOOR HANGERS 3-201
OPEN BRACKETS 3-130 (WITH LATERAL ADJUSTMENT)
HANGER 3-201
GALV TRACK 3-20
GUIDE 45-311
GUIDE CHANNEL 45-1 CONCRETE
GUIDE CHANNEL 44-1 WOOD

DOOR PANEL:
FRAME IS TO BE CONSTRUCTED OF 1 1/2"x4" CEDAR
SLATS ARE TO BE CONSTRUCTED OF 1"x4" CEDAR

