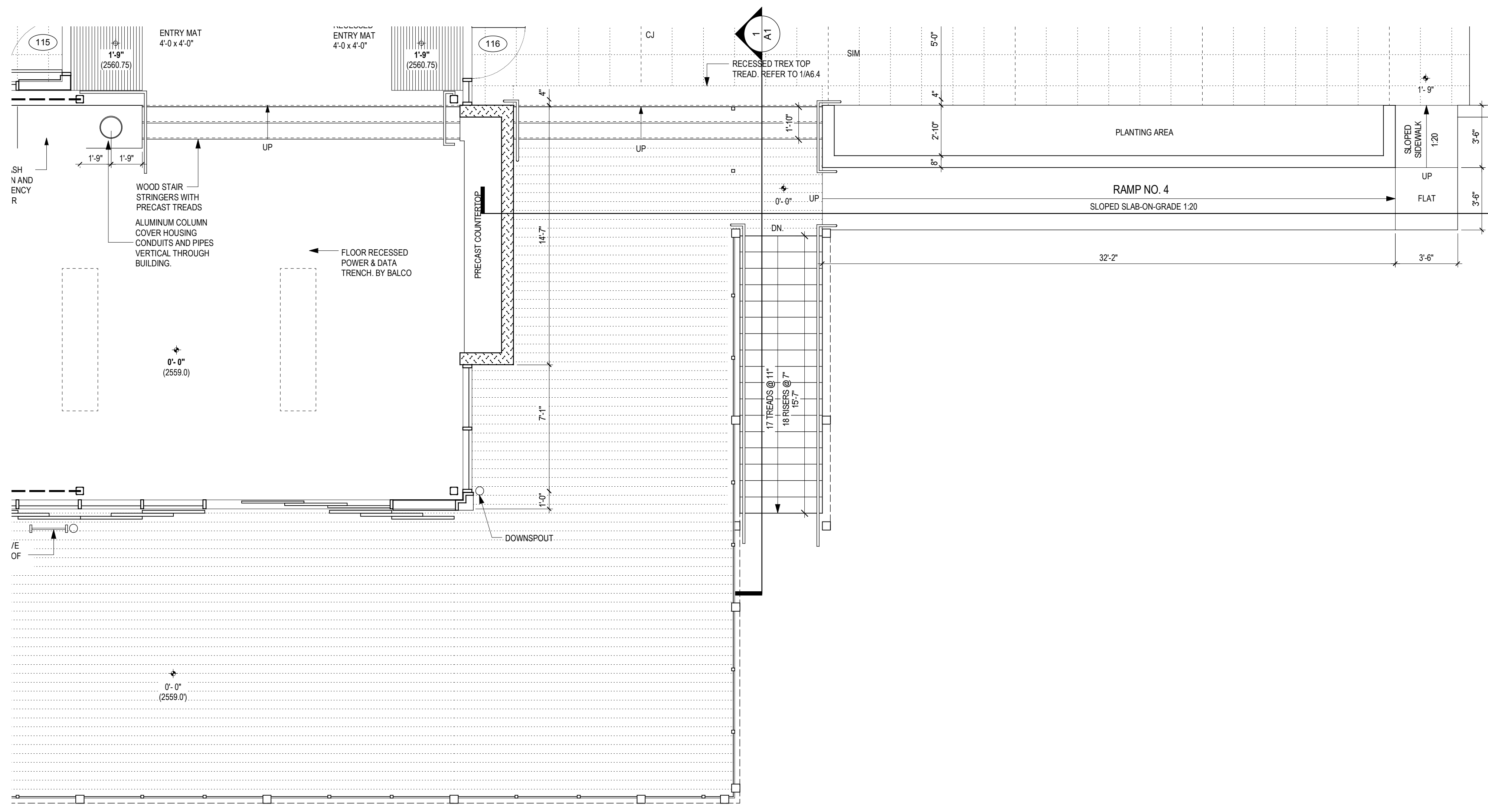
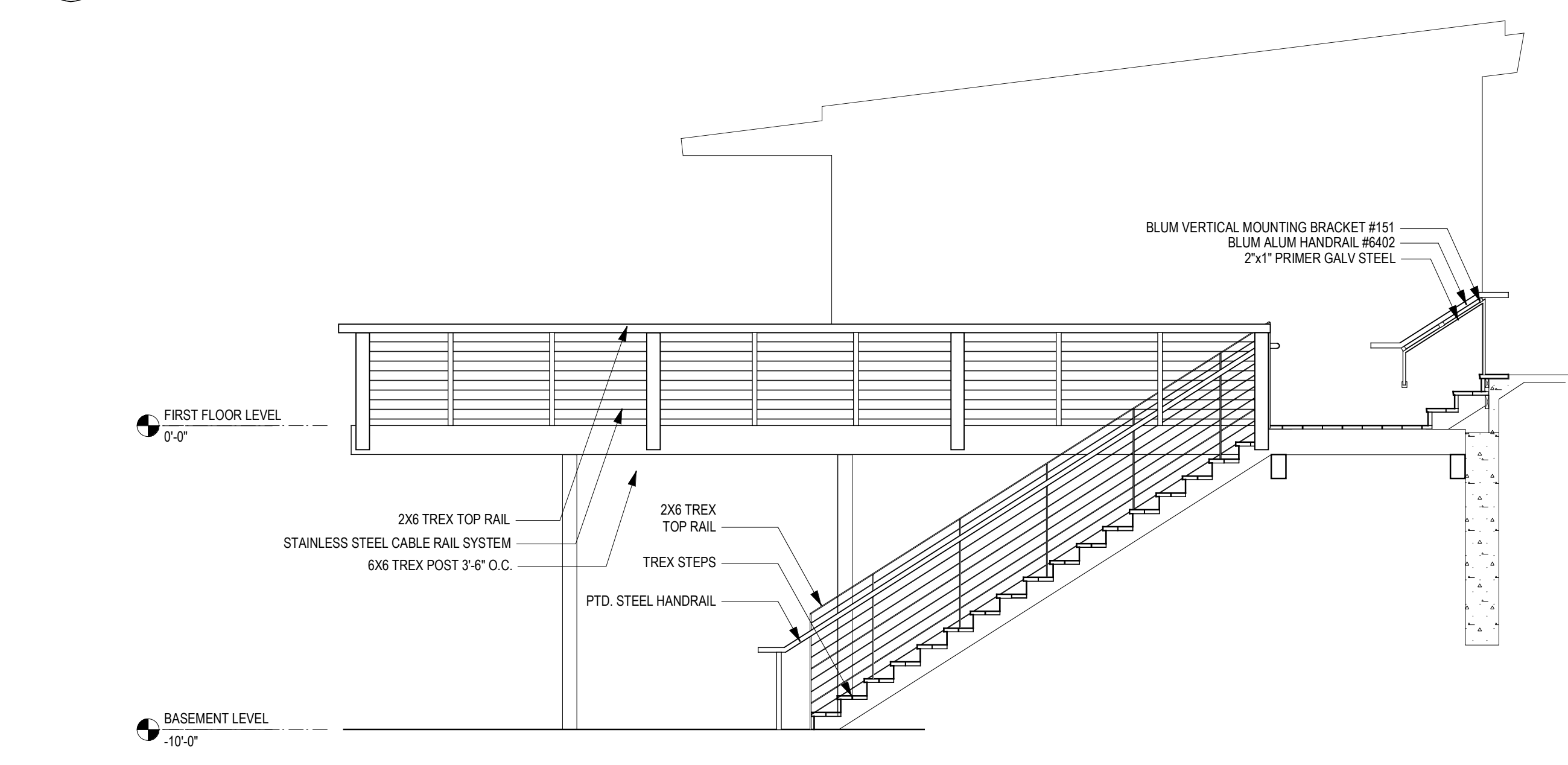


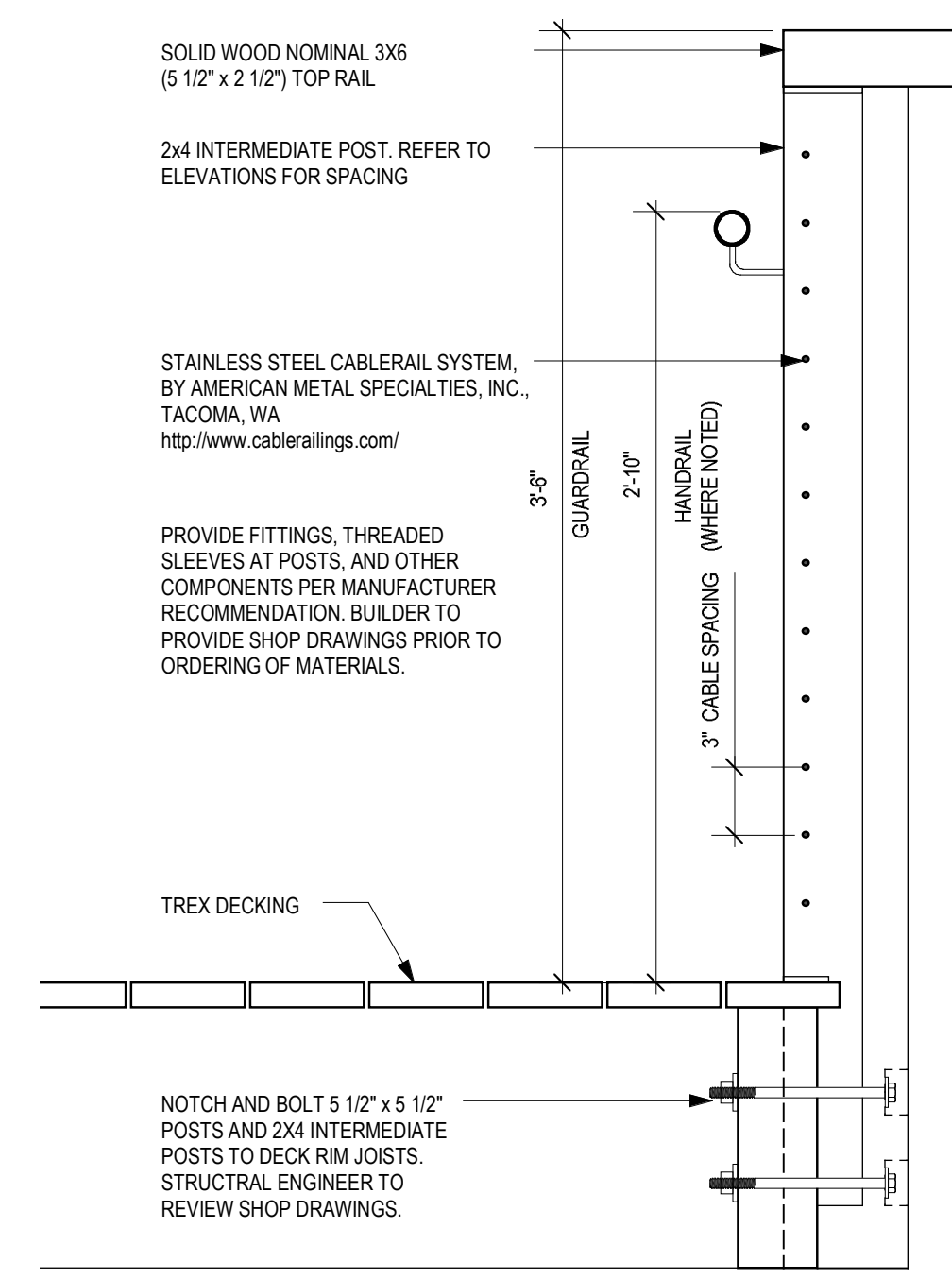
1 STAIR PLAN
SCALE: 1/4"=1'-0"



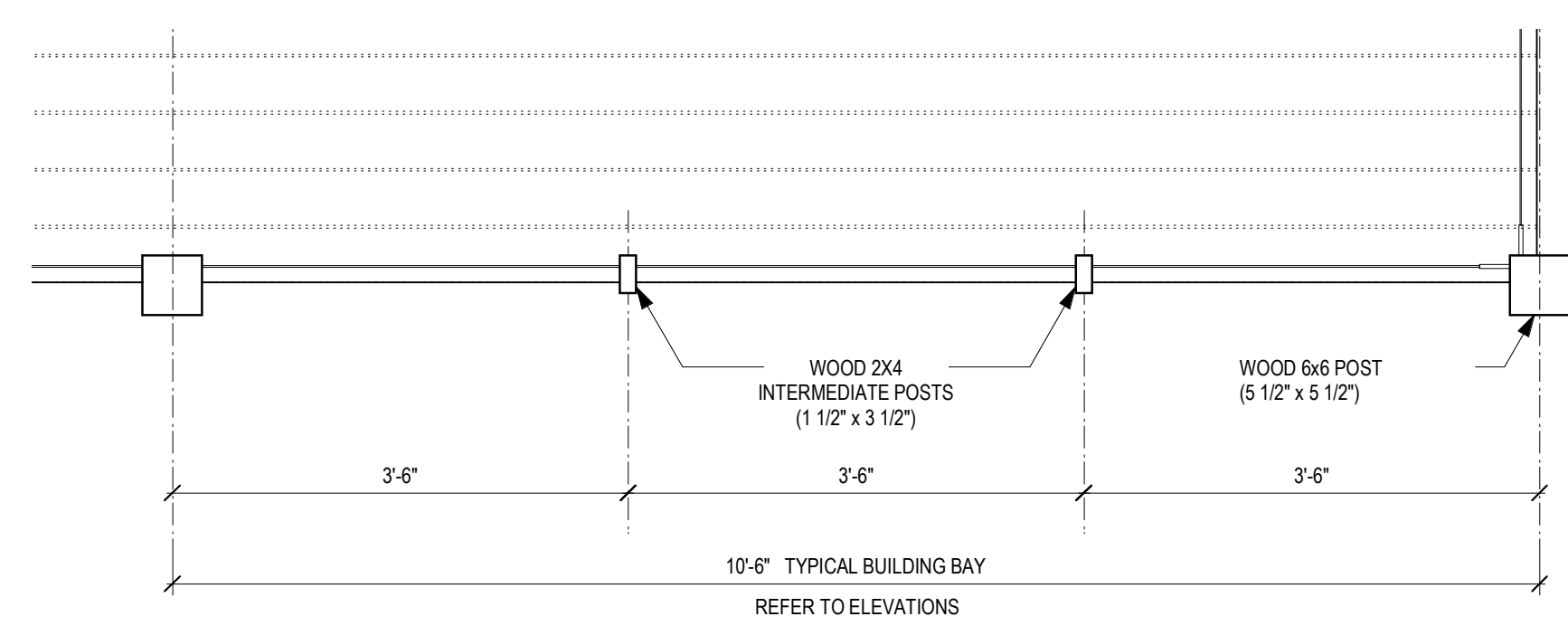
2 STAIR PLAN
SCALE: 1/4"=1'-0"



3 STAIR SECTION - EAST ELEVATION
SCALE: 1/4"=1'-0"



5 TYPICAL GUARDRAIL SECTION
SCALE: 1 1/2"=1'-0"



6 TYPICAL GUARDRAIL CORNER DETAIL & POST SPACING
SCALE: 3/4"=1'-0"

ENERGY LAB

Hawai'i Preparatory Academy

Kamuela, Hawaii
TMK: 6-5-1: 33

FLANSBURGH ARCHITECTS

77 North Washington Street
Boston, Massachusetts 02114
617.367.3970 tel
617.720.7873 fax
www.flaarchitects.com

Architecture
Master Planning
Space Planning
Interior Design

PROJECT MANAGEMENT

Pa'ahana Enterprises, LLC
P.O. Box 109
Kealahou, HI 9675
808.323.2304 tel/fax

SUSTAINABILITY

Buro Happold Consulting Engineers PC
100 Broadway, 23rd Floor
New York, NY, 10005
212.334.2025 tel

CIVIL ENGINEERING

Bett Collins Hawaii Ltd.
2153 North King Street, Suite 200
Honolulu, Hawaii 96819
808.521.5361 tel
808.538.7819 fax

STRUCTURAL ENGINEERING

Walter Vorfeld & Associates
10 Ulana Street
Makawao, Maui, HI 96788
808.572.3535 tel
808.573.3616 fax

MECHANICAL ENGINEERING

Hakalau Engineering, LLC
PO Box 252
Hakalau, Hawaii 96710
808.961.6206 tel

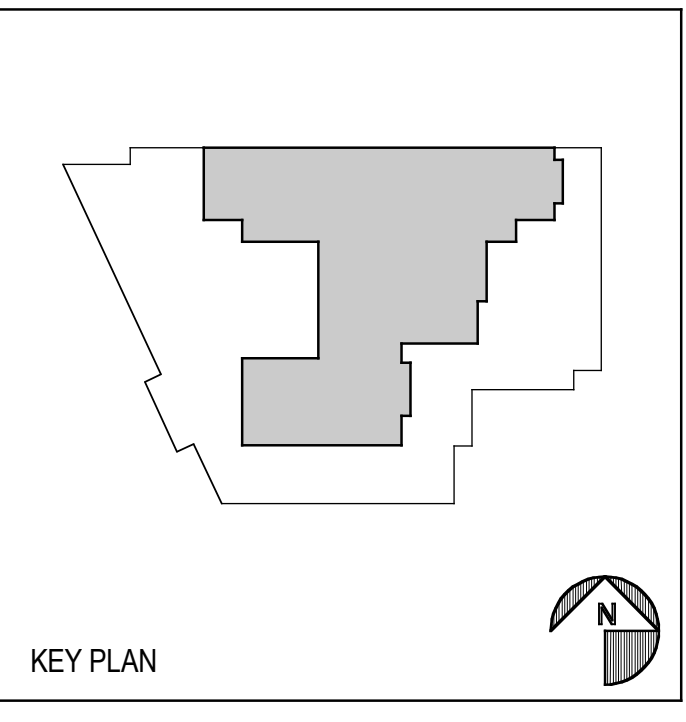
ELECTRICAL ENGINEERING

Wallace T. Oki, PE, Inc.

This work was performed by me or under my supervision and construction of this project will be under my observation (observation of construction as defined in section 16-115.2 of the rules and regulations of the Board of Professional Engineers, Architects and Surveyors of the State of Hawaii).

Duncan P. McClelland, AIA
Architect License No. 13148, Expires 4/30/2010

Add. No.	Description of Revision	Date



STAIR & RAMP SECTIONS & DETAILS

Drawn by:	Job Number: 2804.00
Checked by:	Scale:
Plot Date:	Issue Date: 19 JAN 2009

A
6.5