

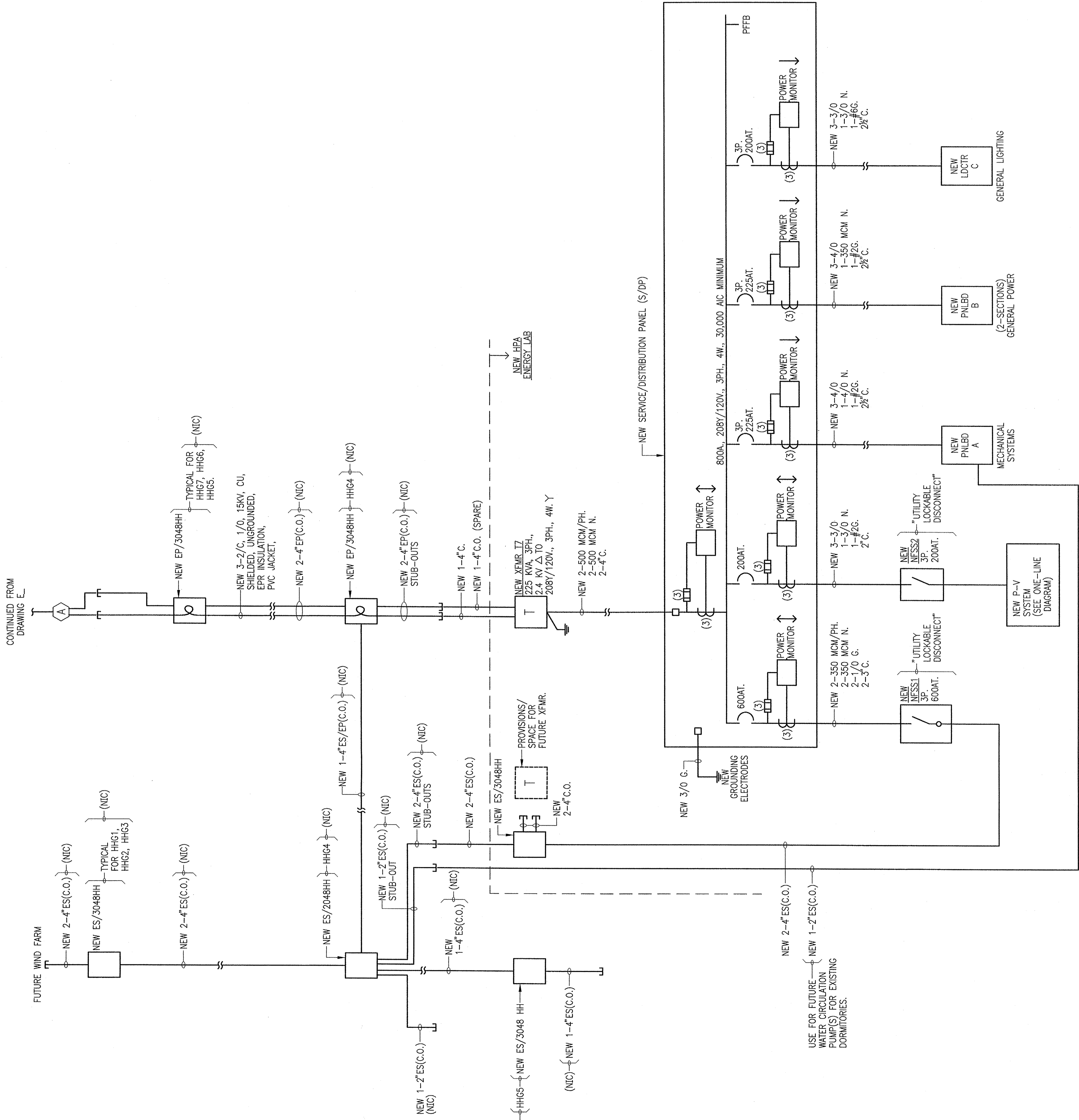
THIS WORK WAS PREPARED BY ME  
OR UNDER MY CLOSE PERSONAL SUPERVISION  
AND I AM A QUALIFIED PROFESSIONAL ENGINEER  
AT THE TIME OF THE CONSTRUCTION OF THIS PROJECT  
AND I WILL BE UNDER MY OBSERVATION  
WALLACE T. OKI, P.E., INC.  
ELECTRICAL ENGINEERING  
1000 KALIA ROAD, SUITE 200  
HONOLULU, HAWAII 96813-2498  
HIC No. 87228 PHS#1-9666 FAX#813-2498  
WTO REF. NO. 82008149

**ELECTRICAL WORK**

Drawn by:	Job Number:	2804-00
Checked by:	Scale:	AS NOTED
Plot Date:	Issue Date:	17 OCT 08
PERMIT ISSUE		

**NOTES - NEW XFMR 17**

- STANDARD PRODUCT: GENERAL ELECTRIC "COMPAD 11", WESTINGHOUSE POW-R-PAD, WITH SPECIFIED OPTIONS AND ACCESSORIES. CONSTRUCTED AND TESTED IN ACCORDANCE WITH LATEST APPLICABLE NEMA AND ANSI STANDARDS.
- TYPE: PAD-MOUNTED, OIL-IMMERSED, SELF-COOLED, WITH SEPARABLE INSULATED HIGH VOLTAGE CONNECTORS, PRIMARY SELECTIVE SWITCH AND CURRENT-LIMITING FUSES IN LOADBREAK DRY-CELL FUSEHOLDERS.
- RATING: 225 KVA, 3 PHASE, 60 HZ, 65% C. RISE, PRIMARY VOLTS 2.4 KV DELTA, SECONDARY 208Y/120V., 3PH., 4W., PRIMARY TAPS AT 2 - 2-1/2% ABOVE AND BELOW NORMAL., BIL 95 KV, INSULATION CLASS 15 KV.
- CONFIGURATION: SIX-200 AMPERE LOADBREAK INTEGRATED BUSHINGS, THREE CURRENT-LIMITING FUSES IN LOADBREAK DRY-CELL FUSEHOLDERS, 100 AMPERE LOADBREAK CAPABILITY, SIZE FOR 150 PERCENT OF TRANSFORMER FULL LOAD CURRENT. PROVIDE 12 SPARE FUSES, TWO SELECTIVE SWITCHES FOR LOOP FEED OPERATION, 200 AMPERES, OIL-IMMERSED, GANG OPERATED, TWO-POSITION ON-OFF, MANUALLY OPERATED, FULL LOADBREAK, MECHANICALLY INTERLOCKED, HOT STICK OPERABLE.
- ACCESSORIES: ONE-INCH FILLING PROVISIONS, ONE-INCH DRAIN VALVE AND SAMPLER, LIQUID LEVEL GAGE, DIAL-TYPE THERMOMETER, PRESSURE RELIEF VALVE, PROVISIONS FOR VACUUM/PRESSURE GAGE.
- ENCLOSURE: TYPE 316 STAINLESS STEEL.
- WINDING: COPPER



**ONE-LINE DIAGRAM - ELECTRIC - HPA ENERGY LAB/HPA WIND FARM**

CONTINUED FROM  
DRAWING E-