

FLANSBURGH ARCHITECTS

77 North Washington Street
 Boston, Massachusetts 02114
 617.367.3970 tel
 617.720.7873 fax
 www.flansburgh.com
 Architecture
 Master Planning
 Space Planning
 Interior Design

PROJECT MANAGEMENT
Pa'ahana Enterprises, LLC
 P.O. Box 109
 Kalaheka, HI 9675
 808.323.2304 tel/fax

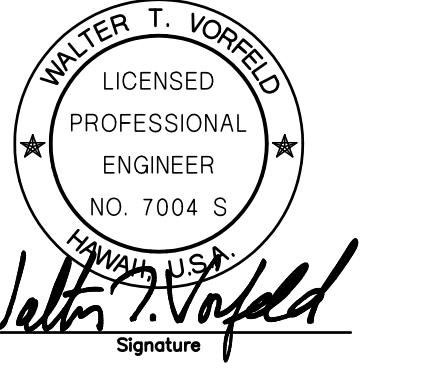
SUSTAINABILITY
Buro Happold Consulting Engineers PC
 100 Broadway, 23rd Floor
 New York, NY, 10005
 212.334.2025 tel

CIVIL ENGINEERING
Belt Collins Hawaii Ltd.
 2153 North King Street, Suite 200
 Honolulu, Hawaii 96819
 808.521.5361 tel
 808.538.7819 fax

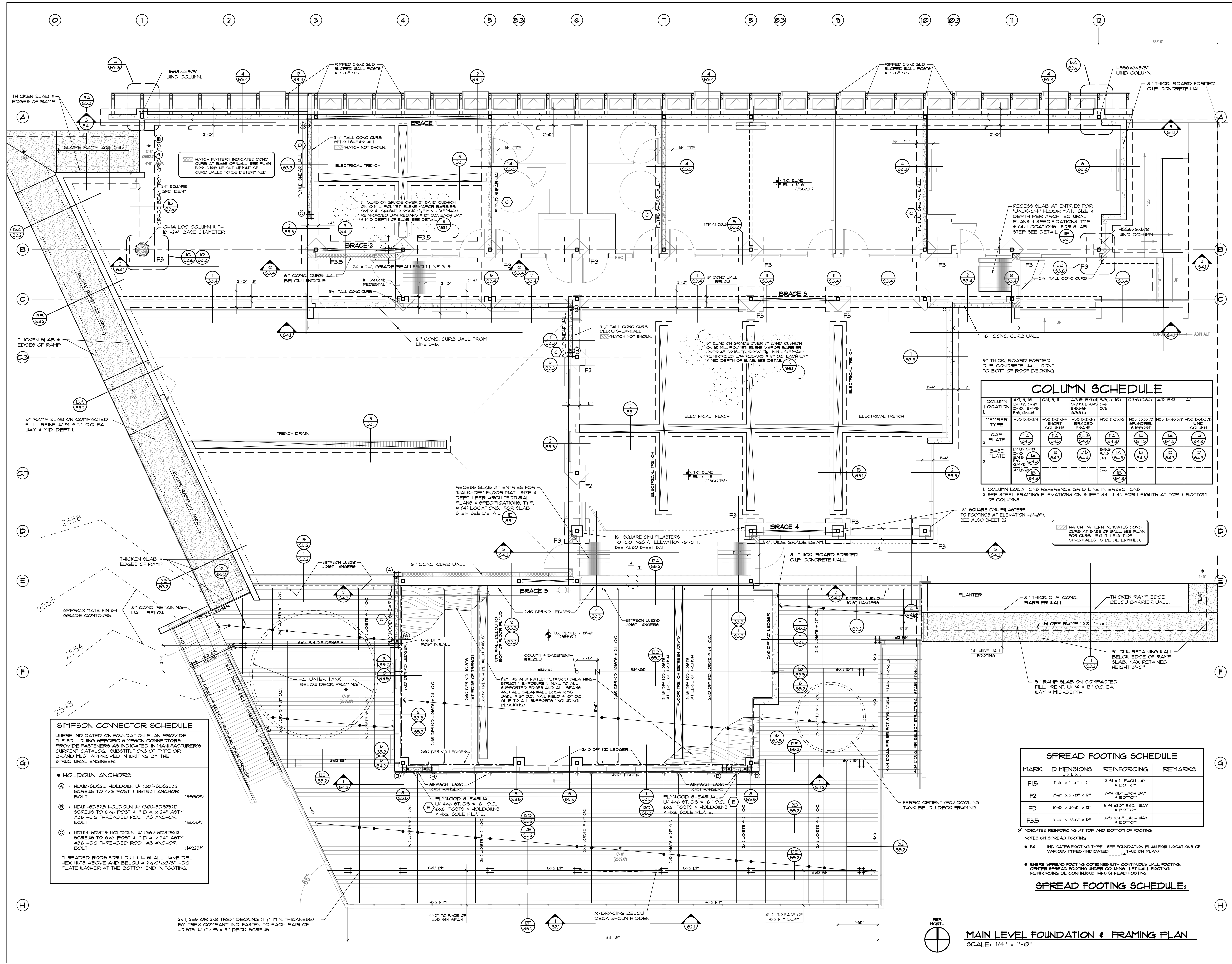
STRUCTURAL ENGINEERING
Walter Vorfeld & Associates
 10 Ulukou Street
 Makawao, Maui, HI 96768
 808.572.3535 tel
 808.573.3616 fax

MECHANICAL ENGINEERING
Hakalau Engineering
 PO Box 252
 Hakalau, Hawaii 96710
 808.961.6206 tel

ELECTRICAL ENGINEERING
Wallace T. Oki, PE, Inc.



This work was performed by me or under my supervision and construction of this project will be under my observation (Observation of construction as defined in section 16-15-2 of the rules and regulations of the Board of Professional Engineers, Architects and Surveyors of the State of Hawaii).
 Date: 4/19/2009



COLUMN SCHEDULE								
COLUMN LOCATION	C/4, 5, 11	A/3, 5, B/14, C/10, D/10, E/4, 8, F/6, G/4, 8	B/5, 9, 10, 11	C/3, 7, C/8, 16	A/12, B/12	A/1		
MEMBER TYPE	H86 5x5x1/4 SHORT COLUMN	H86 5x5x1/2 BRACED FRAME	H86 5x5x1/2 SPANDECK SUPPORT	H86 5x5x1/2 SPANDECK SUPPORT	H86 6x6x5/8 WIND COLUMN	H86 5x5x1/2 WIND COLUMN		
CAP	11A	4A, 4B	11A	11A	11A	11A		
PLATE	B/10, C/2, D/10, E/4, F/6, G/4, A/7, 8, 10	B/4, 3	B/4, 3	B/4, 3	B/4, 3	B/4, 3		
BASE PLATE	11B	11B	11B	11B	11B	11B		

1. COLUMN LOCATIONS REFERENCE GRID LINE INTERSECTIONS
 2. SEE STEEL FRAMING ELEVATIONS ON SHEET S41 & 42 FOR HEIGHTS AT TOP & BOTTOM OF COLUMNS

SPREAD FOOTING SCHEDULE			
MARK	DIMENSIONS	REINFORCING	REMARKS
F1.5	1'-6" x 1'-6" x 12"	2-#4 @ 12" EACH WAY @ BOTTOM	
F2	2'-0" x 2'-0" x 12"	2-#4 @ 18" EACH WAY @ BOTTOM	
F3	3'-0" x 3'-0" x 12"	3-#4 @ 36" EACH WAY @ BOTTOM	
F3.5	3'-6" x 3'-6" x 12"	3-#5 @ 36" EACH WAY @ BOTTOM	

* INDICATES REINFORCING AT TOP AND BOTTOM OF FOOTING
 NOTES ON SPREAD FOOTING
 • F4 INDICATES FOOTING TYPE. SEE FOUNDATION PLAN FOR LOCATIONS OF VARIOUS TYPES (INDICATED ... F4 THIS ON PLAN)
 • WHERE SPREAD FOOTING COMBINES WITH CONTINUOUS WALL FOOTING, CENTER SPREAD FOOTING UNDER COLUMN. LET WALL FOOTING REINFORCING BE CONTINUOUS THRU SPREAD FOOTING.

SPREAD FOOTING SCHEDULE:

SIMPSON CONNECTOR SCHEDULE
 WHERE INDICATED ON FOUNDATION PLAN PROVIDE THE FOLLOWING SPECIFIC SIMPSON CONNECTORS. PROVIDE FASTENERS AS INDICATED IN MANUFACTURER'S CURRENT CATALOG. SUBSTITUTIONS OF TYPE OR BRAND MUST APPROVED IN WRITING BY THE STRUCTURAL ENGINEER.

- HOLDOWN ANCHORS**
- A = HDU8-SD825 HOLDOWN W/ (20)-SD82512 SCREWS TO 6x6 POST & S8TB4 ANCHOR BOLT. (3980#)
- B = HDU11-SD825 HOLDOWN W/ (30)-SD82512 SCREWS TO 6x6 POST & 1" DIA x 24" ASTM A36 HDG THREADED ROD AS ANCHOR BOLT. (3935#)
- C = HDU14-SD825 HOLDOWN W/ (36)-SD82512 SCREWS TO 6x6 POST & 1" DIA x 24" ASTM A36 HDG THREADED ROD AS ANCHOR BOLT. (14925#)

THREADED RODS FOR HDU11 & 14 SHALL HAVE DEL. HEX NUTS ABOVE AND BELOW A 2 1/2 x 3/8" HDG PLATE WASHER AT THE BOTTOM END IN FOOTING.

2x4, 2x6 OR 2x8 TREX DECKING (1/2" MIN. THICKNESS) BY TREX COMPANY, INC. FASTEN TO EACH PAIR OF JOISTS W/ (2)-#3 x 3" DECK SCREWS.

MAIN LEVEL FOUNDATION & FRAMING PLAN
 SCALE: 1/4" = 1'-0"

MAIN LEVEL FOUNDATION & FRAMING PLAN

PERMIT SET 01-19-09
 Drawn by: WTV, RD, KC Job Number: WVA-28012
 Checked by: WTV, RD, KC Scale: AS NOTED
 PERMIT SET Date: 01/19/2009

S
2.2