

# Energy Laboratory

## Hawaii Preparatory Academy, Kamuela, Hawaii

Progress Set

July 28th, 2008

### Architect

## FLANSBURGH ARCHITECTS

77 North Washington Street Boston, Massachusetts 02114-1910  
Telephone 617-367-3970 Fax 617-720-7873

FAI Project No. 2804.00

### Consultants

#### Project Management

**Pa'ahana Enterprises, LLC**  
P.O.Box 109  
Kealahou, HI 96750

#### Sustainability

**Buro Happold Consulting Engineers PC**  
100 Broadway, 23rd Floor  
New York, NY 10005

#### Civil Engineer

**Belt Collins Hawaii Ltd.**  
2153 North King Street, Suite 200  
Honolulu, HI 96819

#### Structural Engineer

**Walter Vorfeld & Associates**  
10 Ulana Street  
Makawao, Maui, HI 96768

#### Mechanical Engineer

**Hakalau Engineering**  
P.O.Box 252  
Hakalau, HI 96710

#### Electrical Engineer

**Wallace T. Oki, P.E., Inc.**  
P.O.Box  
Hilo, HI

### List of Drawings

■ 0.0 Cover Sheet

#### CIVIL

□ C1.0 XXX

□

□

□

#### LANDSCAPE

□ L1.0 XXX

□

□

□

□

#### ARCHITECTURAL

□ A0.1 Abbreviations and Symbols

□ A0.2 Master Keynote List

□ A0.3 Code Analysis

■ A1.0 Basement Plan

■ A1.1 Main Floor Plan

■ A1.2 Clerestory Plan

■ A1.3 Roof Plan

□ A1.4 Partition Types

■ A2.1 Transverse Building Sections

■ A2.2 Longitudinal Building Sections

□

■ A3.1 North & South Elevations

■ A3.2 East & West Elevations

□

■ A4.01 Wall Sections

□ A4.02 Wall Sections

□

□ A5.1 Vertical Details

□ A5.2 Vertical Details

□ A5.3 Plan Details

□ A5.4 Roof Details

■ A6.1 Interior Storefront, Door Sched. & Details

■ A6.2 Exterior Window & Sliding Door System

□ A6.3 Louver Types & Details

□ A6.4 Exterior Sun Screens & Slats

□ A6.5 Stair Sections & Details

□ A7.1 Interior Elevations

□ A7.2 Interior Elevations

□ A7.3 Interior Elevations

□ A8.1 Millwork

□ A8.2 Millwork

□ A9.0 Basement Reflected Ceiling Plan

□ A9.1 Main Floor Reflected Ceiling Plan

□ A9.2 Clerestory Reflected Ceiling Plan

#### STRUCTURAL

■ S1.0 Basement Foundation & Framing Plan

■ S1.1 Main Floor Framing Plan

■ S1.2 Clerestory Framing Plan

■ S1.3 Roof Framing Plan

□

□

□

□

□

□

#### PLUMBING

□ P1.0 Basement Plumbing Plan

■ P1.1 Main Floor Plumbing Plan

□

□

□

□

□

□

#### MECHANICAL

□ M1.0 Basement Mechanical Plan

■ M1.1 Main Floor Mechanical Plan

□ M1.2 Clerestory Mechanical Plan

□ M1.3 Roof Mechanical Plan

□

□

□

□

□

□

□

□

□

#### ELECTRICAL

□ E1.0 Basement Electrical Plan

□ E1.1 Main Floor Electrical Plan

□ E1.2 Clerestory Electrical Plan

□ E1.3 Roof Electrical Plan

□ E2.0 Basement Power Plan

□ E2.1 Main Floor Power Plan

□ E2.2 Clerestory Power Plan

□ E2.3 Roof Power Plan

□ E3.0 Basement Lighting Plan

□ E3.1 Main Floor Lighting Plan

□ E3.2 Clerestory Lighting Plan

□ E3.3 Roof Lighting Plan

□

□

#### COMMUNICATIONS

□ CM1.0 Basement Data Plan

□ CM1.1 Main Floor Data Plan

# ENERGY LAB

Hawai'i  
Preparatory  
Academy

Kamuela, Hawaii

FLANSBURGH ARCHITECTS

77 North Washington Street  
Boston, Massachusetts 02114  
617.367.3970 tel  
617.720.7873 fax  
www.flansburgh.com

Architecture  
Master Planning  
Space Planning  
Interior Design

PROJECT MANAGEMENT

**Pa'ahana Enterprises, LLC**  
P.O. Box 109  
Kealahou, HI 9675  
808.323.2304 tel/fax

SUSTAINABILITY

**Buro Happold Consulting Engineers PC**  
100 Broadway, 23rd Floor  
New York, NY, 10005  
212.334.2025 tel

CIVIL ENGINEERING

**Bett Collins Hawaii Ltd.**  
2153 North King Street, Suite 200  
Honolulu, Hawaii 96819  
808.521.5361 tel  
808.538.7819 fax

STRUCTURAL ENGINEERING

**Walter Vorfeld & Associates**  
10 Ulana Street  
Makawao, Maui, HI 96768  
808.572.3535 tel  
808.573.3616 fax

MECHANICAL ENGINEERING

**Hakalau Engineering**  
PO Box 252  
Hakalau, Hawaii 96710  
808.961.6206 tel

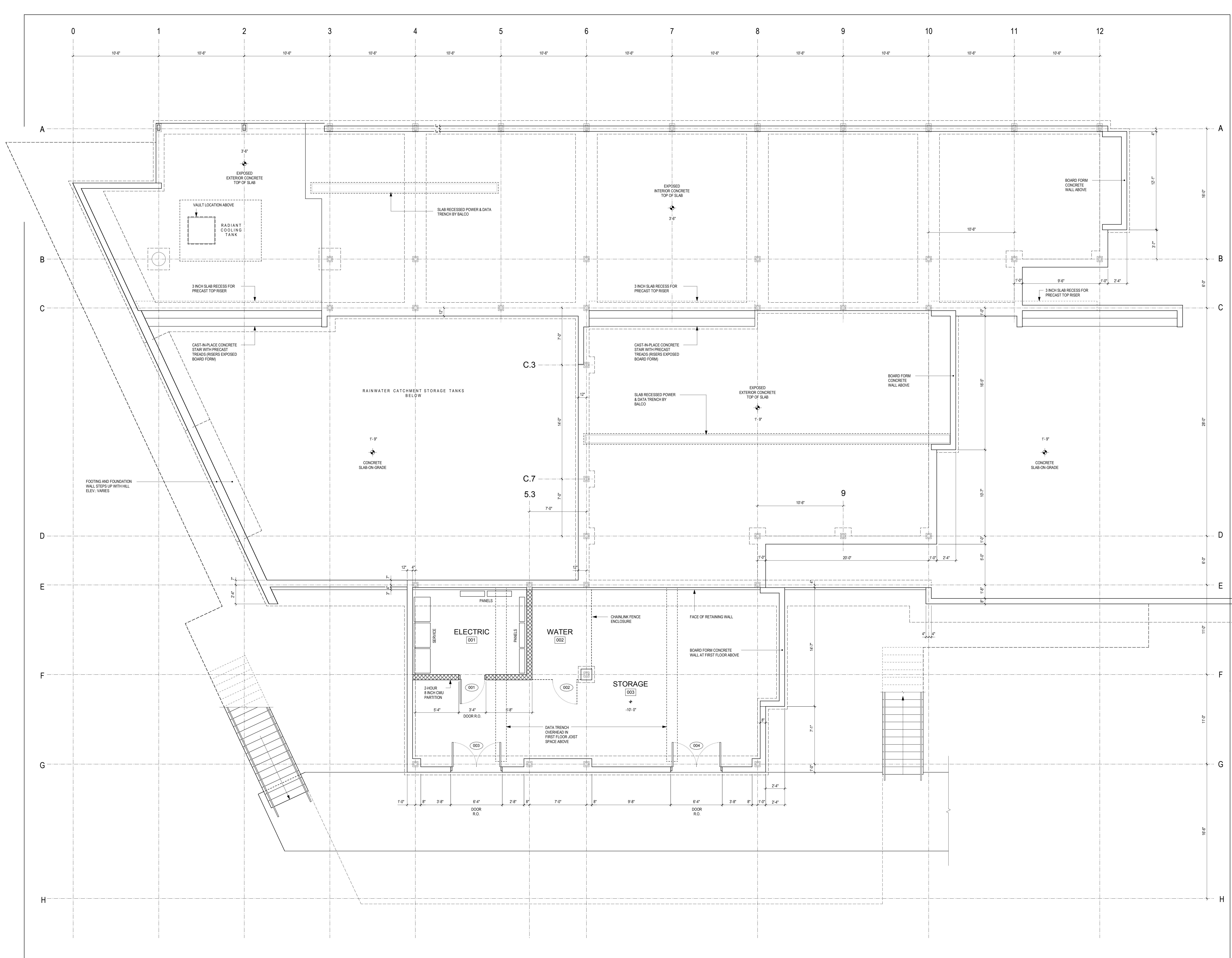
ELECTRICAL ENGINEERING

**Wallace T. Oki, PE, Inc.**  
808.961.9666 x22

## BASEMENT & FOUNDATION PLAN

Drawn by: CB Job Number: 2804.00  
Checked by: Scale: 1/4" = 1'-0"  
Plot Date: Issue Date: 28 JULY 08

A  
1.0



# ENERGY LAB

Hawai'i  
Preparatory  
Academy

Kamuela, Hawaii

FLANSBURGH ARCHITECTS

77 North Washington Street  
Boston, Massachusetts 02114  
617.367.3970 tel  
617.720.7873 fax  
www.flansburgh.com

Architecture  
Master Planning  
Space Planning  
Interior Design

PROJECT MANAGEMENT  
**Pa'ahana Enterprises, LLC**  
P.O. Box 109  
Kalaheka, HI 9675  
808.323.2304 tel/fax

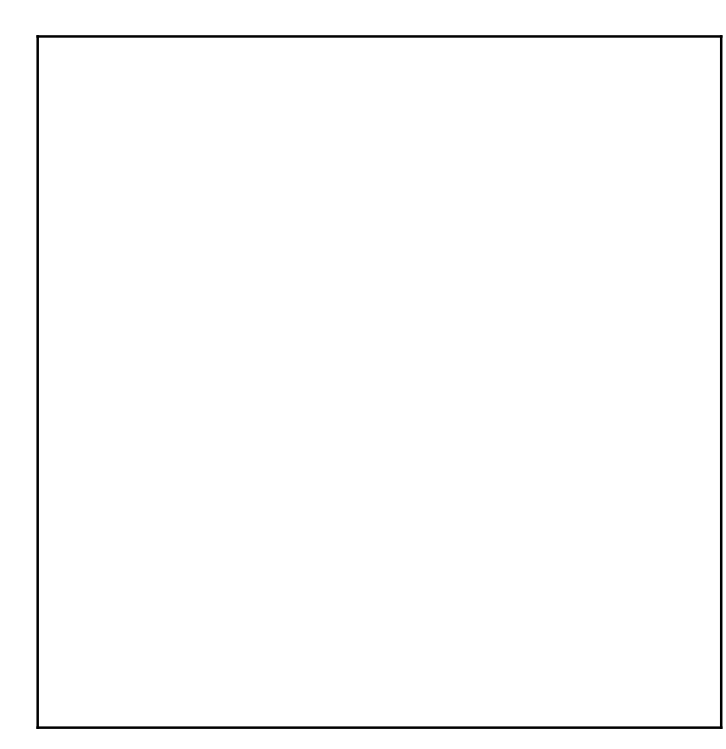
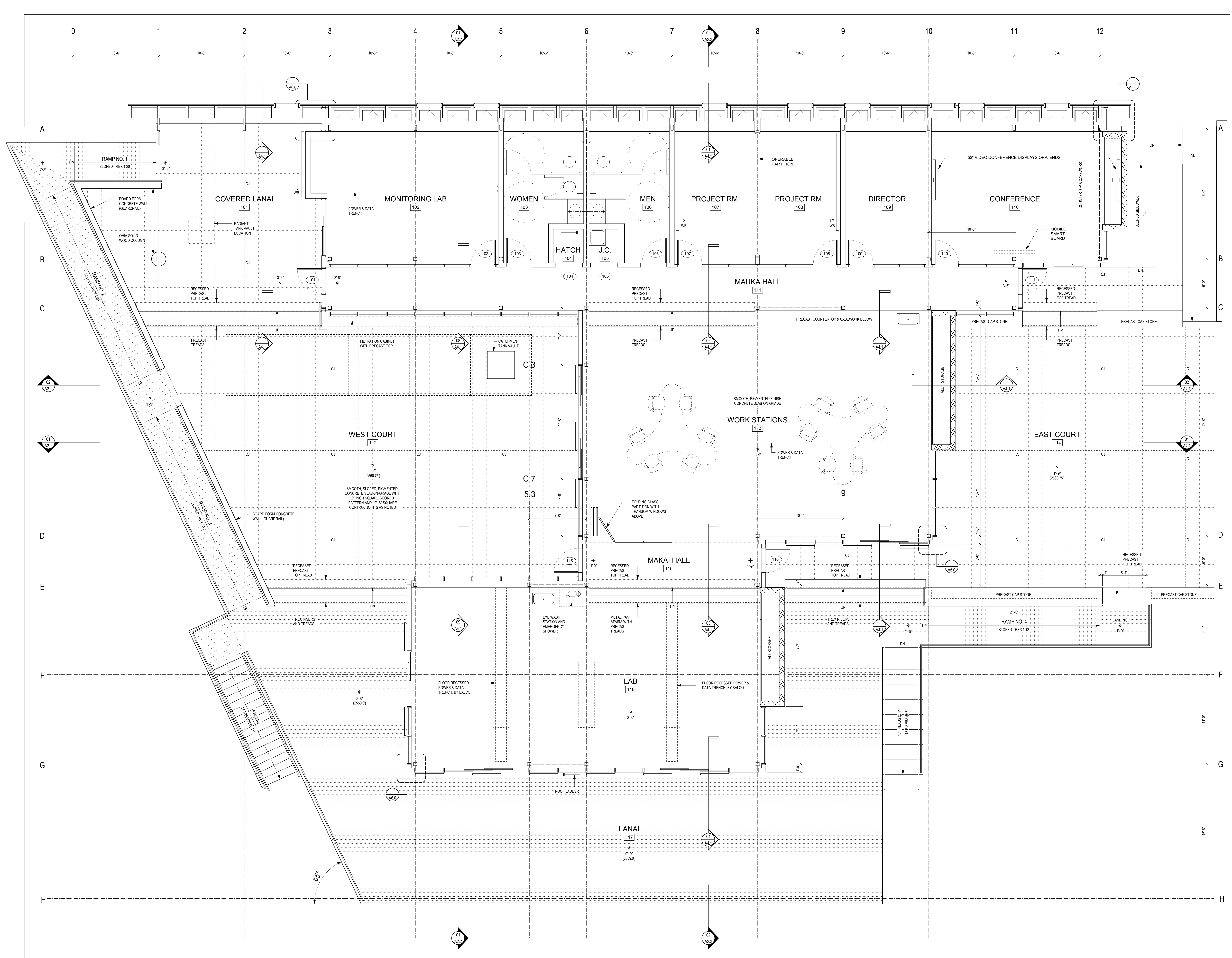
SUSTAINABILITY  
**Buro Happold Consulting Engineers PC**  
100 Broadway, 23rd Floor  
New York, NY, 10005  
212.334.2025 tel

CIVIL ENGINEERING  
**Batt Collins Hawaii Ltd.**  
2153 North King Street, Suite 200  
Honolulu, Hawaii 96819  
808.521.5361 tel  
808.538.7819 fax

STRUCTURAL ENGINEERING  
**Walter Vorfeld & Associates**  
10 Ulana Street  
Makawao, Maui, HI 96768  
808.572.3535 tel  
808.573.3616 fax

MECHANICAL ENGINEERING  
**Hakalau Engineering**  
PO Box 252  
Hakalau, Hawaii 96710  
808.961.6206 tel

ELECTRICAL ENGINEERING  
**Wallace T. Oki, PE, Inc.**  
808.961.9666 x22



## FIRST FLOOR PLAN

Drawn by:	CB	Job Number:	2804.00
Checked by:		Scale:	1/4" = 1'-0"
Plot Date:		Issue Date:	28 JULY 08

A  
1.1

# ENERGY LAB

Hawai'i  
Preparatory  
Academy

Kamuela, Hawaii

FLANSBURGH ARCHITECTS

77 North Washington Street  
Boston, Massachusetts 02114  
617.367.3970 tel  
617.720.7873 fax  
www.flansburgh.com

Architecture  
Master Planning  
Space Planning  
Interior Design

PROJECT MANAGEMENT

**Pa'ahana Enterprises, LLC**  
P.O. Box 109  
Kealahou, HI 9675  
808.323.2304 tel/fax

SUSTAINABILITY

**Buro Happold Consulting Engineers PC**  
100 Broadway, 23rd Floor  
New York, NY, 10005  
212.334.2025 tel

CIVIL ENGINEERING

**Belt Collins Hawaii Ltd.**  
2153 North King Street, Suite 200  
Honolulu, Hawaii 96819  
808.521.5361 tel  
808.538.7819 fax

STRUCTURAL ENGINEERING

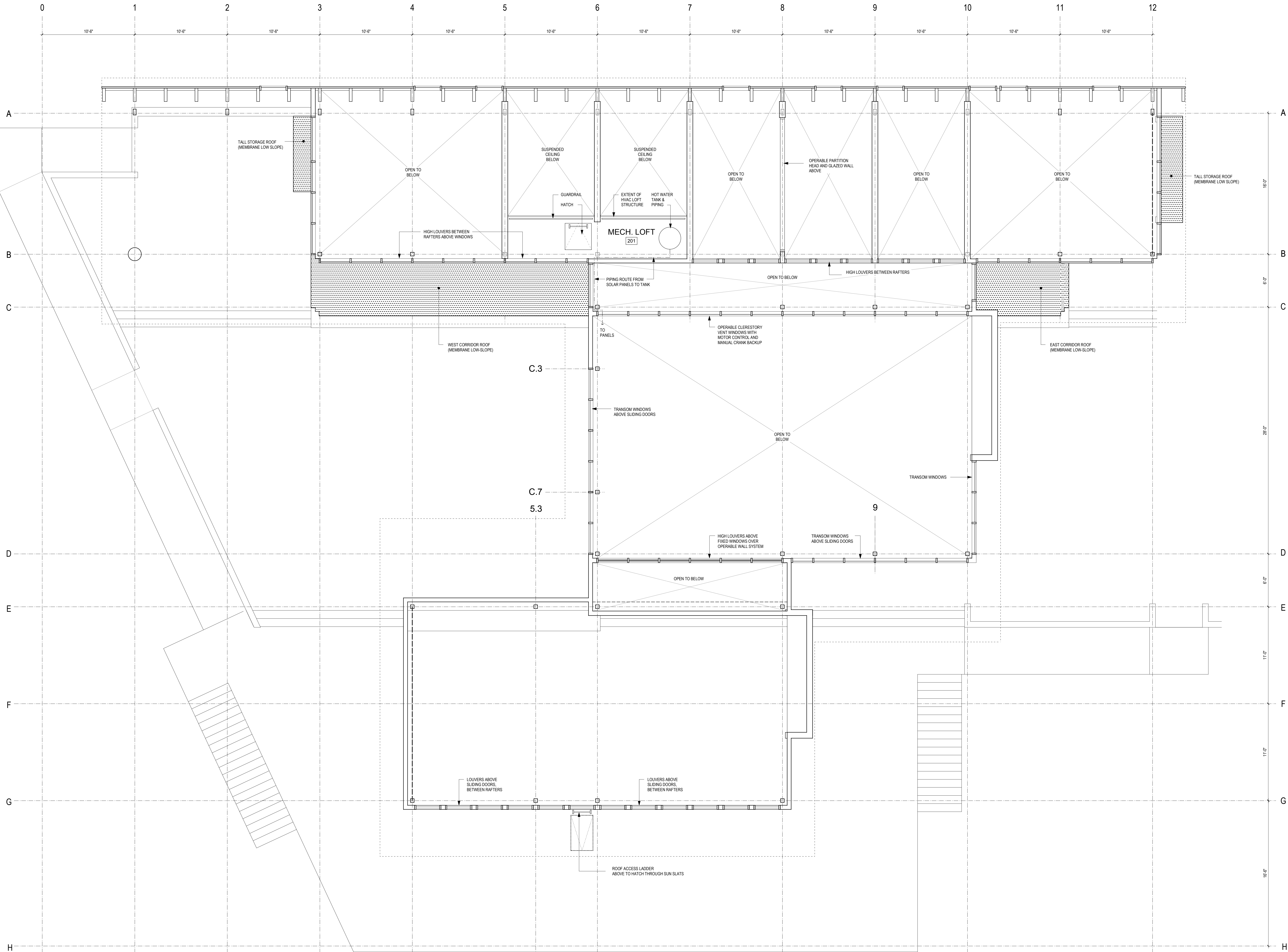
**Walter Vorfeld & Associates**  
10 Uliana Street  
Makawao, Maui, HI 96768  
808.572.3535 tel  
808.573.3616 fax

MECHANICAL ENGINEERING

**Hakalau Engineering**  
PO Box 252  
Hakalau, Hawaii 96710  
808.961.6206 tel

ELECTRICAL ENGINEERING

**Wallace T. Oki, PE, Inc.**  
808.961.9666 x22



## CLERESTORY PLAN

Drawn by:	CB	Job Number:	2804.00
Checked by:		Scale:	1/4" = 1'-0"
Plot Date:		Issue Date:	28 JULY 08

A  
1.2

# ENERGY LAB

Hawai'i  
Preparatory  
Academy

Kamuela, Hawaii

FLANSBURGH ARCHITECTS

77 North Washington Street  
Boston, Massachusetts 02114  
617.367.3970 tel  
617.720.7873 fax  
www.flansburgh.com

Architecture  
Master Planning  
Space Planning  
Interior Design

PROJECT MANAGEMENT

**Pa'ahana Enterprises, LLC**  
P.O. Box 109  
Kealahou, HI 9675  
808.323.2304 tel/fax

SUSTAINABILITY

**Buro Happold Consulting Engineers PC**  
100 Broadway, 23rd Floor  
New York, NY, 10005  
212.334.2025 tel

CIVIL ENGINEERING

**Batt Collins Hawaii Ltd.**  
2153 North King Street, Suite 200  
Honolulu, Hawaii 96819  
808.521.5361 tel  
808.538.7819 fax

STRUCTURAL ENGINEERING

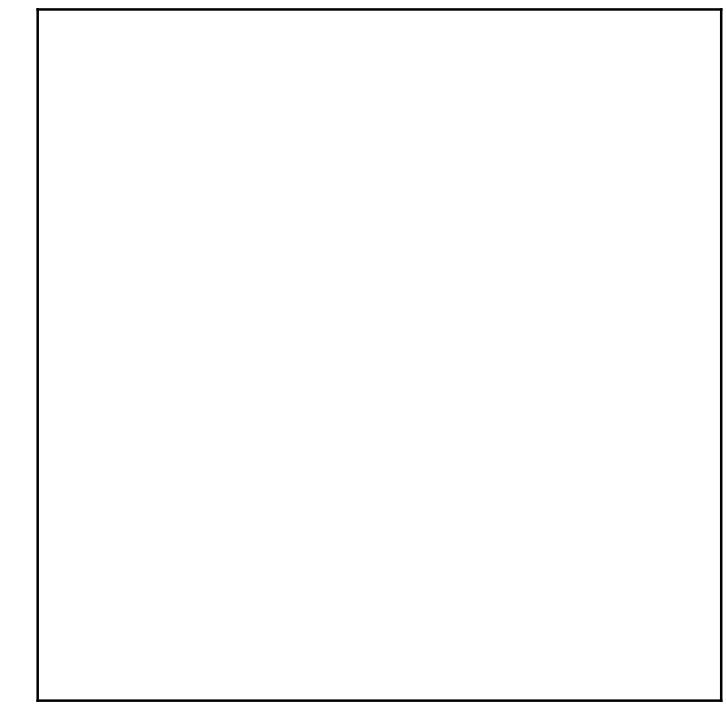
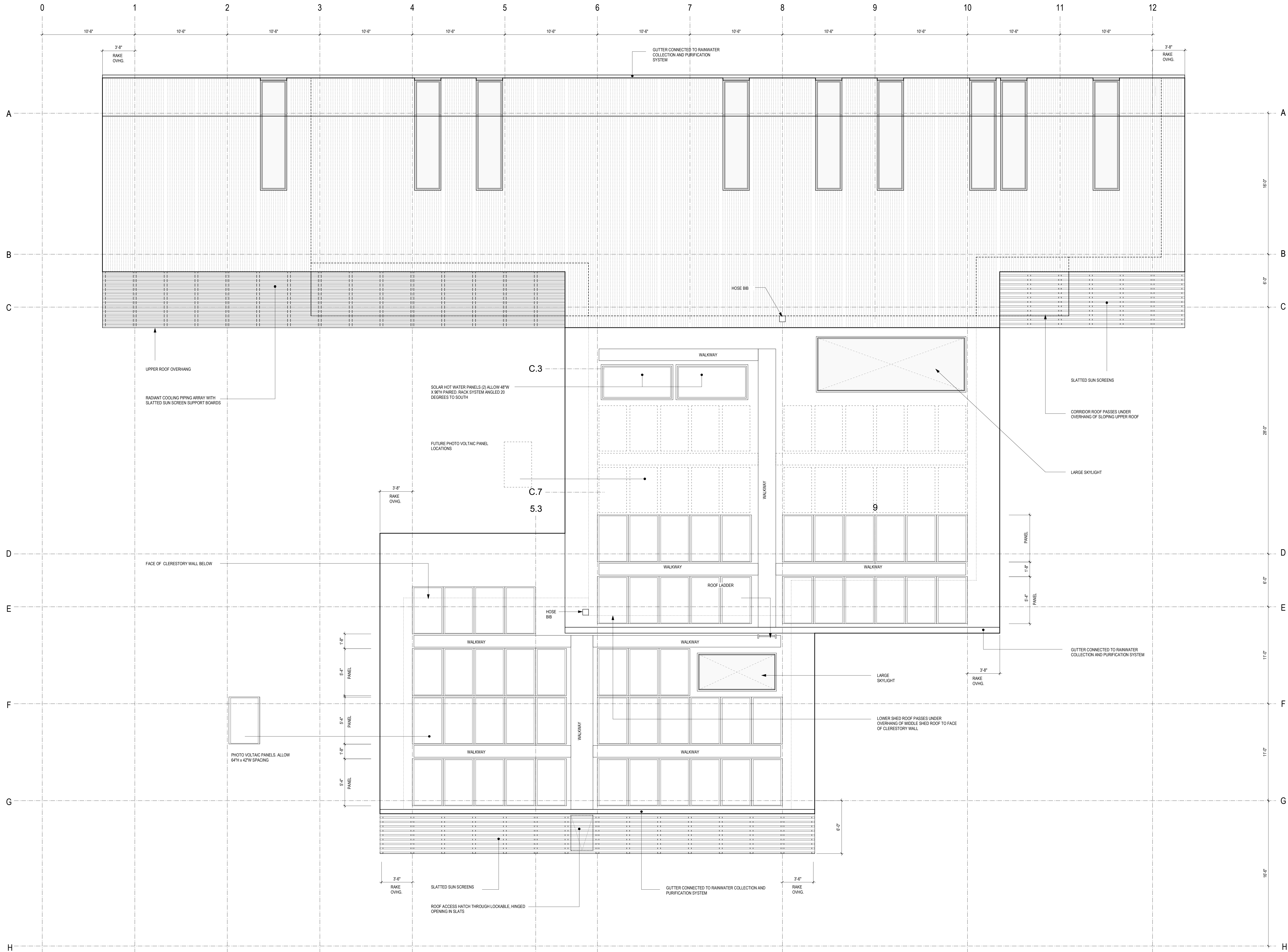
**Walter Vorfeld & Associates**  
10 Ulana Street  
Makawao, Maui, HI 96768  
808.572.3535 tel  
808.573.3616 fax

MECHANICAL ENGINEERING

**Hakalau Engineering**  
PO Box 252  
Hakalau, Hawaii 96710  
808.961.6206 tel

ELECTRICAL ENGINEERING

**Wallace T. Oki, PE, Inc.**  
808.961.9666 x22



## ROOF PLAN

Drawn by:	CB	Job Number:	2804.00
Checked by:		Scale:	1/4" = 1'-0"
Plot Date:		Issue Date:	28 JULY 08

A  
1.3

# ENERGY LAB

Hawai'i  
Preparatory  
Academy

Kamuela, Hawaii

## FLANSBURGH ARCHITECTS

77 North Washington Street  
Boston, Massachusetts 02114  
617.367.3970 tel  
617.720.7873 fax  
www.flansburgh.com

Architecture  
Master Planning  
Space Planning  
Interior Design

## PROJECT MANAGEMENT

**Pa'ahana Enterprises, LLC**  
P.O. Box 109  
Kealahou, HI 9675  
808.323.2304 tel/fax

## SUSTAINABILITY

**Buro Happold Consulting Engineers PC**  
100 Broadway, 23rd Floor  
New York, NY, 10005  
212.334.2025 tel

## CIVIL ENGINEERING

**Batt Collins Hawaii Ltd.**  
2153 North King Street, Suite 200  
Honolulu, Hawaii 96819  
808.521.5361 tel  
808.538.7819 fax

## STRUCTURAL ENGINEERING

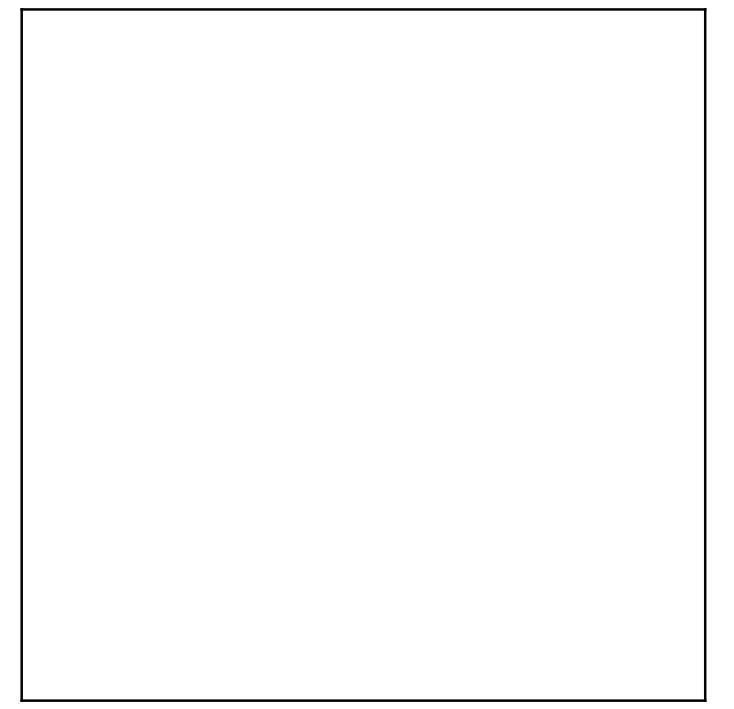
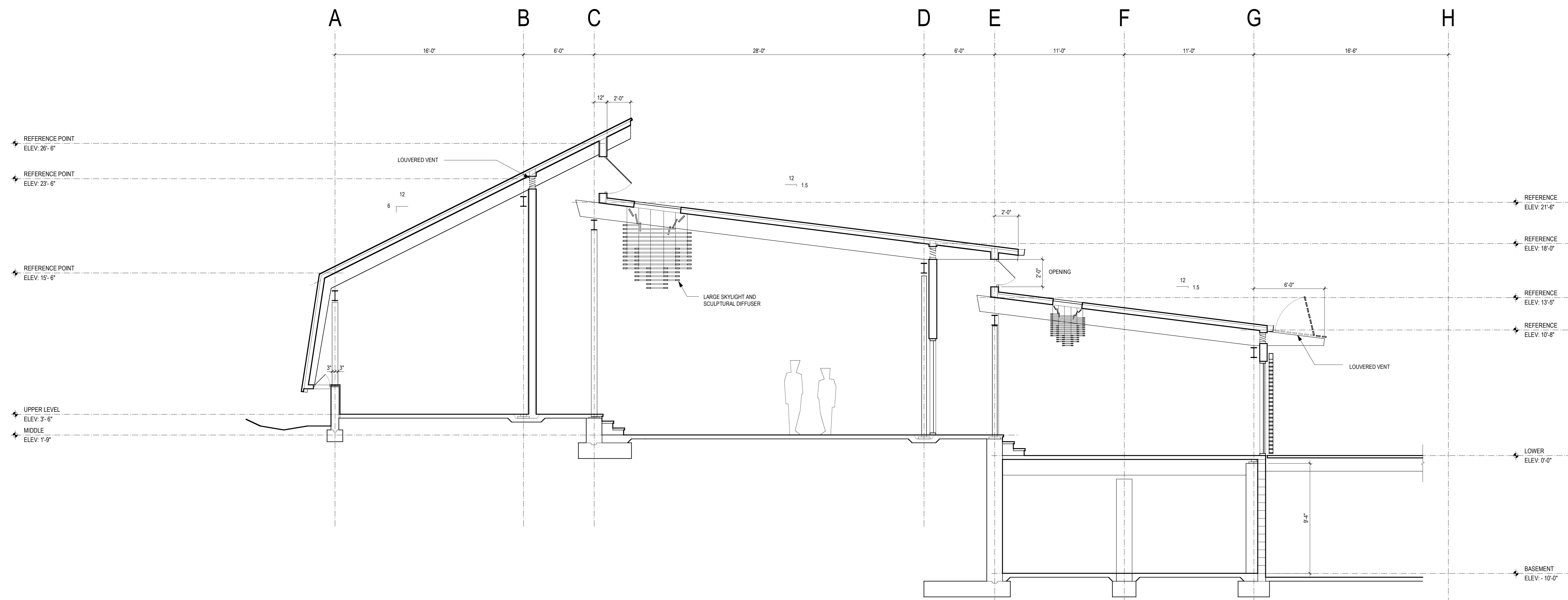
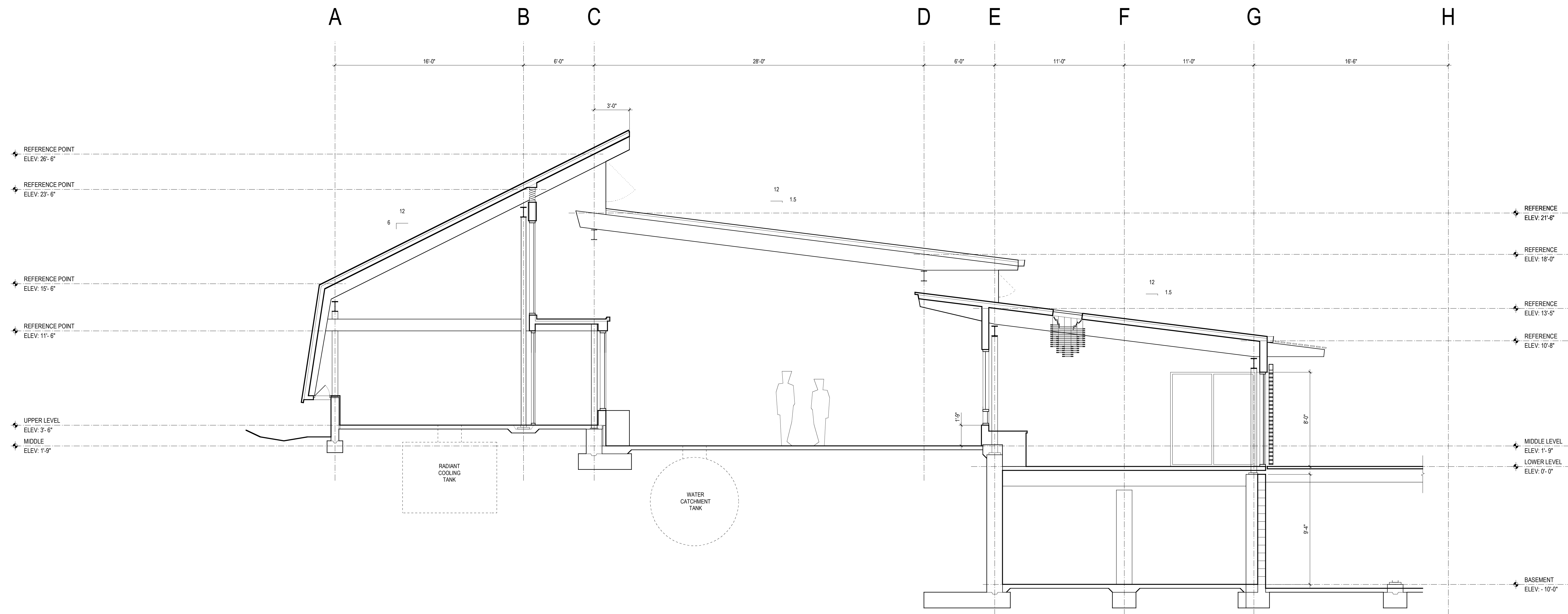
**Walter Vorfeld & Associates**  
10 Ulana Street  
Makawao, Maui, HI 96768  
808.572.3535 tel  
808.573.3616 fax

## MECHANICAL ENGINEERING

**Hakalau Engineering**  
PO Box 252  
Hakalau, Hawaii 96710  
808.961.6206 tel

## ELECTRICAL ENGINEERING

**Wallace T. Oki, PE, Inc.**  
808.961.9666 x22



## TRANSVERSE BUILDING SECTIONS

Drawn by: CB Job Number: 2804.00  
Checked by: Scale: 1/4" = 1'-0"  
Plot Date: Issue Date: 28 JULY 08

A  
2.1

# ENERGY LAB

Hawai'i  
Preparatory  
Academy

Kamuela, Hawaii

## FLANSBURGH ARCHITECTS

77 North Washington Street  
Boston, Massachusetts 02114  
617.367.3970 tel  
617.720.7873 fax  
www.flansburgh.com

Architecture  
Master Planning  
Space Planning  
Interior Design

### PROJECT MANAGEMENT

**Pa'ahana Enterprises, LLC**  
P.O. Box 109  
Kealahou, HI 9675  
808.323.2304 tel/fax

### SUSTAINABILITY

**Buro Happold Consulting Engineers PC**  
100 Broadway, 23rd Floor  
New York, NY, 10005  
212.334.2025 tel

### CIVIL ENGINEERING

**Belt Collins Hawaii Ltd.**  
2153 North King Street, Suite 200  
Honolulu, Hawaii 96819  
808.521.5361 tel  
808.538.7819 fax

### STRUCTURAL ENGINEERING

**Walter Vorfeld & Associates**  
10 Ulana Street  
Makawao, Maui, HI 96768  
808.572.3535 tel  
808.573.3616 fax

### MECHANICAL ENGINEERING

**Hakalau Engineering**  
PO Box 252  
Hakalau, Hawaii 96710  
808.961.6206 tel

### ELECTRICAL ENGINEERING

**Wallace T. Oki, PE, Inc.**  
808.961.9666 x22

12

10

8

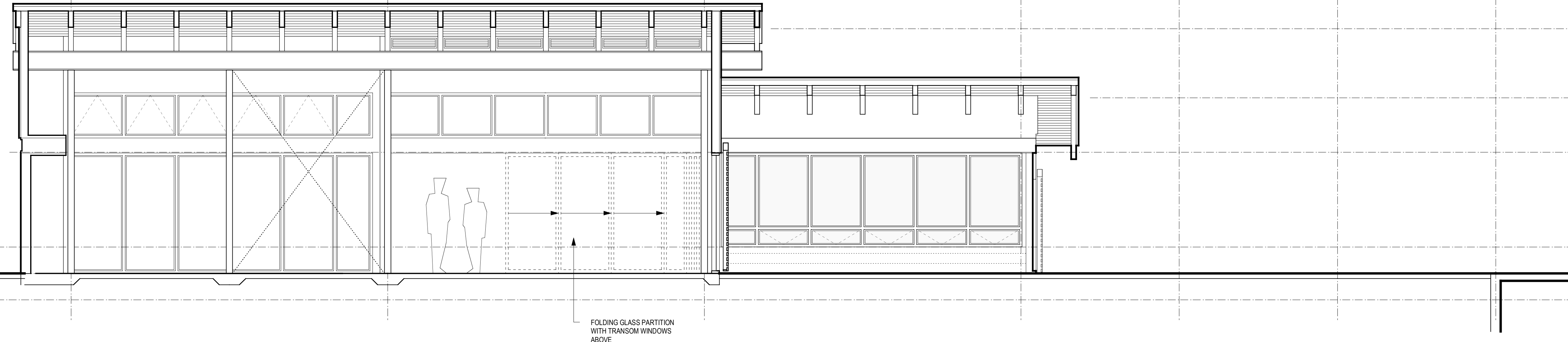
6

4

3

2

1



FOLDING GLASS PARTITION  
WITH TRANSOM WINDOWS  
ABOVE

REFERENCE  
ELEV: 18'-0"

REFERENCE  
ELEV: 13'-6"

WINDOW HEAD  
ELEV: 9'-9 1/2"

UPPER LEVEL  
ELEV: 3'-6"

MIDDLE LEVEL  
ELEV: 1'-9"

LOWER LEVEL  
ELEV: 0'-0"

1

2

3

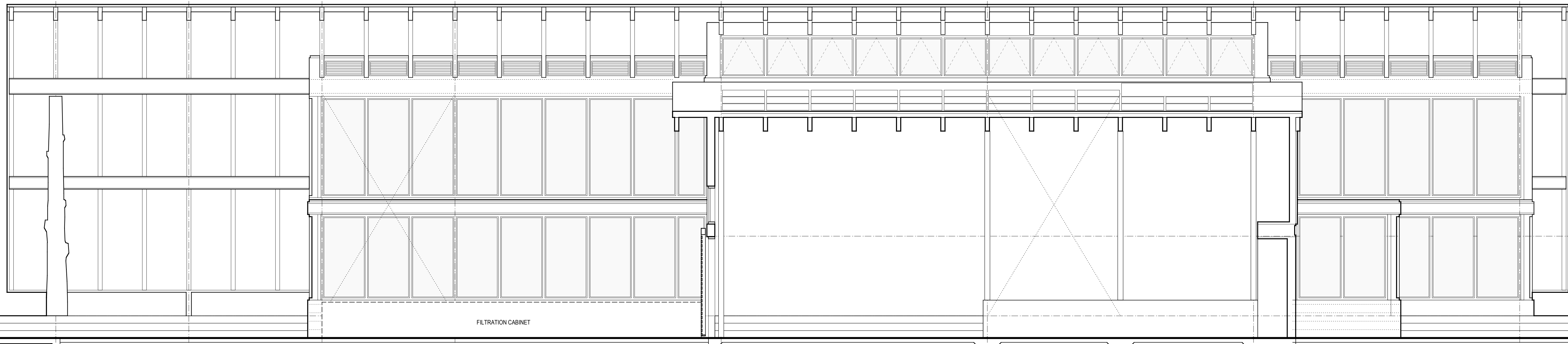
4

6

8

10

12



FILTRATION CABINET

REFERENCE POINT  
ELEV: 26'-6"

REFERENCE POINT  
ELEV: 23'-6"

WINDOW HEAD R.O.  
ELEV: 9'-9 1/2"

UPPER LEVEL  
ELEV: 3'-6"

MIDDLE LEVEL  
ELEV: 1'-9"

LOWER LEVEL  
ELEV: 0'-0"

BASEMENT  
ELEV: -10'-0"

## LONGITUDINAL BUILDING SECTIONS

Drawn by: CB Job Number: 2804.00  
Checked by: Scale: 1/4" = 1'-0"  
Plot Date: Issue Date: 28 JULY 08

A  
2.2

# ENERGY LAB

Hawai'i  
Preparatory  
Academy

Kamuela, Hawaii

FLANSBURGH ARCHITECTS

77 North Washington Street  
Boston, Massachusetts 02114  
617.367.3970 tel  
617.720.7873 fax  
www.flansburgh.com

Architecture  
Master Planning  
Space Planning  
Interior Design

PROJECT MANAGEMENT

**Pa'ahana Enterprises, LLC**  
P.O. Box 109  
Kealahou, HI 9675  
808.323.2304 tel/fax

SUSTAINABILITY

**Buro Happold Consulting Engineers PC**  
100 Broadway, 23rd Floor  
New York, NY, 10005  
212.334.2025 tel

CIVIL ENGINEERING

**Bett Collins Hawaii Ltd.**  
2153 North King Street, Suite 200  
Honolulu, Hawaii 96819  
808.521.5361 tel  
808.538.7819 fax

STRUCTURAL ENGINEERING

**Walter Vorfeld & Associates**  
10 Uliana Street  
Makawao, Maui, HI 96768  
808.572.3535 tel  
808.573.3616 fax

MECHANICAL ENGINEERING

**Hakalau Engineering**  
PO Box 252  
Hakalau, Hawaii 96710  
808.961.6206 tel

ELECTRICAL ENGINEERING

**Wallace T. Oki, PE, Inc.**  
808.961.9666 x22

12

10

8

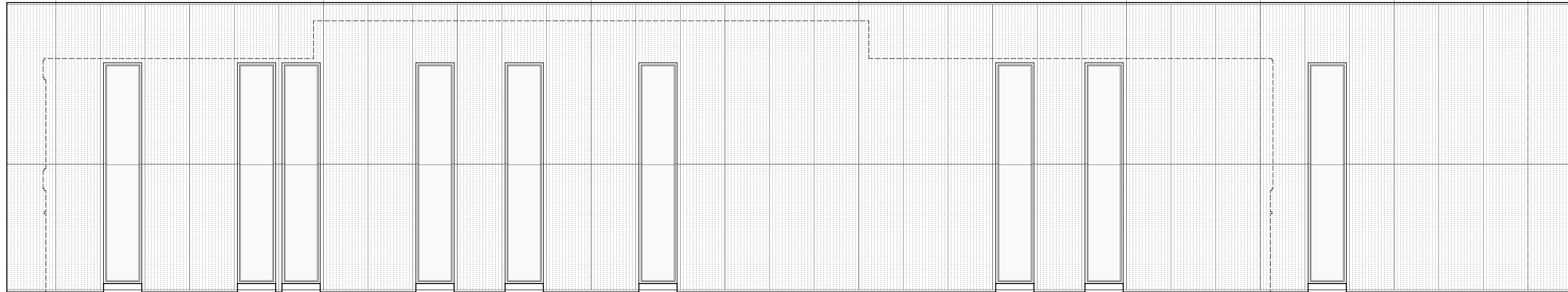
6

4

3

2

1



REFERENCE POINT  
ELEV: 26'-6"

REFERENCE POINT  
ELEV: 23'-6"

REFERENCE POINT  
ELEV: 15'-6"

UPPER LEVEL  
ELEV: 3'-6"

MIDDLE LEVEL  
ELEV: 1'-9"

LOWER LEVEL  
ELEV: 0'-0"

1

2

3

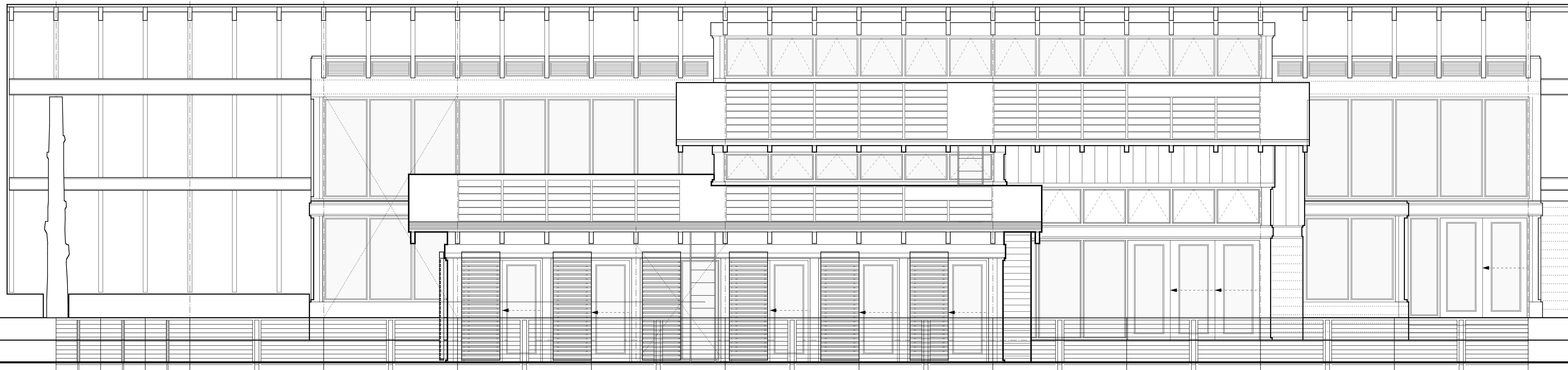
4

6

8

10

12



REFERENCE POINT  
ELEV: 26'-6"

REFERENCE POINT  
ELEV: 23'-6"

REFERENCE POINT  
ELEV: 15'-6"

UPPER LEVEL  
ELEV: 3'-6"

MIDDLE LEVEL  
ELEV: 1'-9"

LOWER LEVEL  
ELEV: 0'-0"

BASEMENT  
ELEV: -10'-0"

NORTH & SOUTH  
ELEVATIONS

Drawn by: CB Job Number: 2804.00

Checked by: Scale: 1/4" = 1'-0"

Plot Date: Issue Date: 28 JULY 08

A  
3.1



# ENERGY LAB

Hawai'i  
Preparatory  
Academy

Kamuela, Hawaii

## FLANSBURGH ARCHITECTS

77 North Washington Street  
Boston, Massachusetts 02114  
617.367.3970 tel  
617.720.7873 fax  
www.flansburgh.com

Architecture  
Master Planning  
Space Planning  
Interior Design

## PROJECT MANAGEMENT

**Pa'ahana Enterprises, LLC**  
P.O. Box 109  
Kealahou, HI 9675  
808.323.2304 tel/fax

## SUSTAINABILITY

**Buro Happold Consulting Engineers PC**  
100 Broadway, 23rd Floor  
New York, NY, 10005  
212.334.2025 tel

## CIVIL ENGINEERING

**Belt Collins Hawaii Ltd.**  
2153 North King Street, Suite 200  
Honolulu, Hawaii 96819  
808.521.5361 tel  
808.538.7819 fax

## STRUCTURAL ENGINEERING

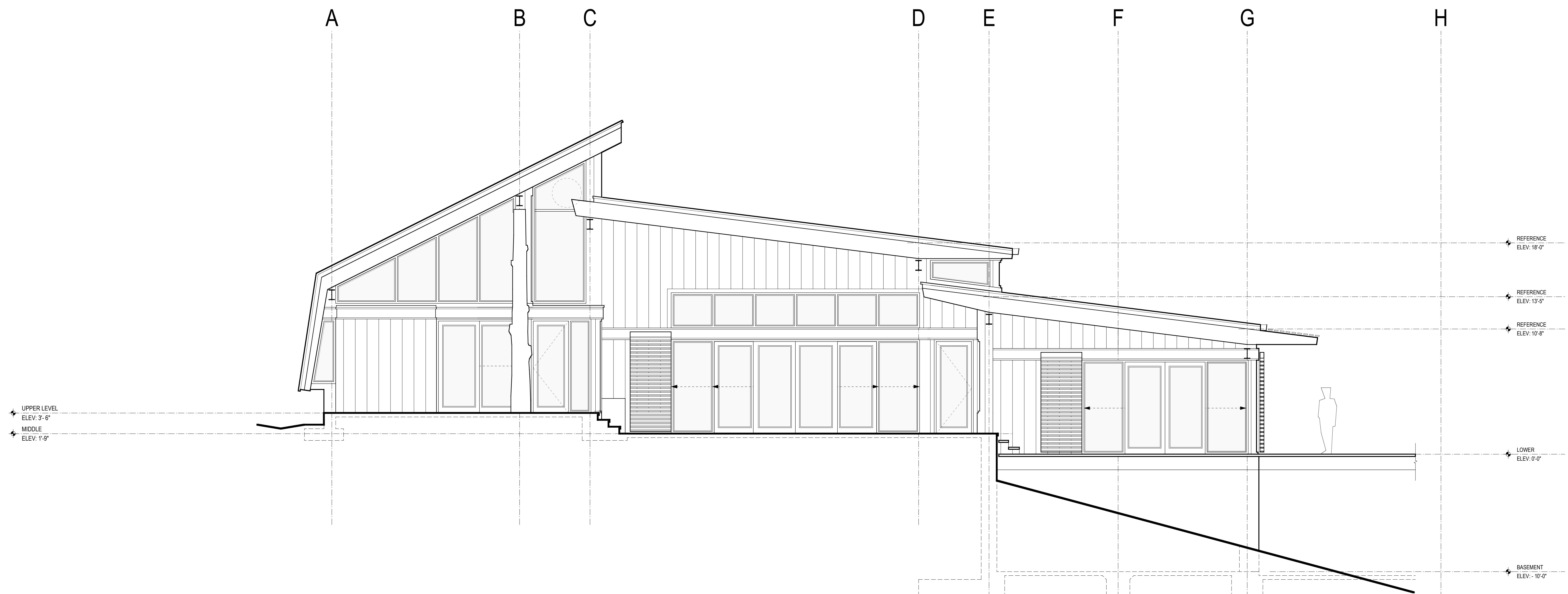
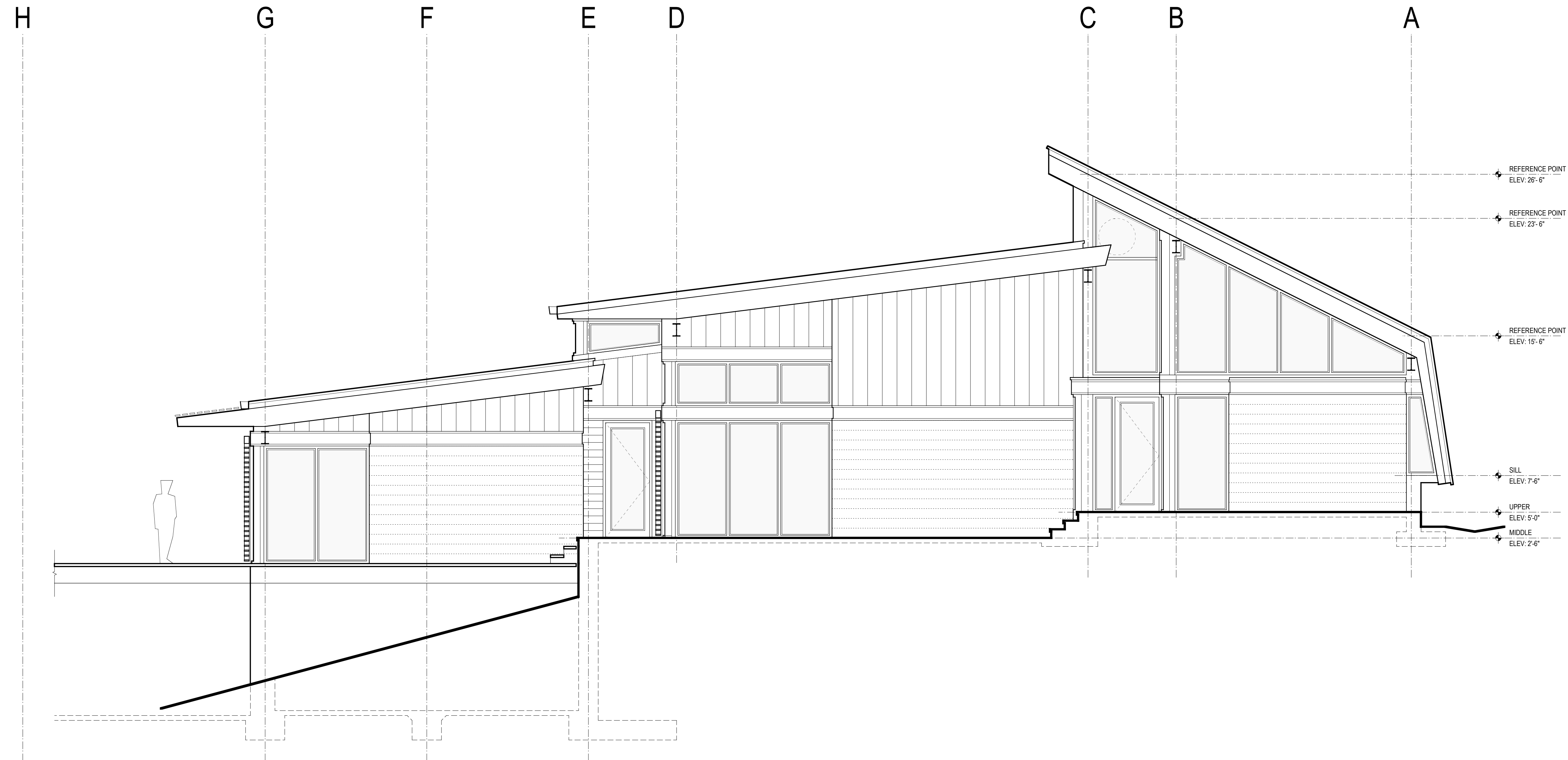
**Walter Vorfeld & Associates**  
10 Ulana Street  
Makawao, Maui, HI 96768  
808.572.3535 tel  
808.573.3616 fax

## MECHANICAL ENGINEERING

**Hakalau Engineering**  
PO Box 252  
Hakalau, Hawaii 96710  
808.961.6206 tel

## ELECTRICAL ENGINEERING

**Wallace T. Oki, PE, Inc.**  
808.961.9666 x22



## EAST & WEST ELEVATIONS

Drawn by:	CB	Job Number:	2804.00
Checked by:		Scale:	1/4" = 1'-0"
Plot Date:		Issue Date:	28 JULY 08

A  
3.2