

# ENERGY LAB

Hawai'i  
Preparatory  
Academy

Kamuela, Hawaii

FLANSBURGH ARCHITECTS

77 North Washington Street  
Boston, Massachusetts 02114  
617.367.2970 tel  
617.720.7873 fax  
www.flansburgh.com

Architecture  
Master Planning  
Space Planning  
Interior Design

PROJECT MANAGEMENT

**Pa'ahana Enterprises, LLC**  
P.O. Box 109  
Kealahou, HI 9675  
808.323.2304 tel/fax

SUSTAINABILITY

**Buro Happold Consulting Engineers PC**  
100 Broadway, 23rd Floor  
New York, NY, 10005  
212.334.2025 tel

CIVIL ENGINEERING

**Belt Collins Hawaii Ltd.**  
2153 North King Street, Suite 200  
Honolulu, Hawaii 96819  
808.521.5361 tel  
808.538.7819 fax

STRUCTURAL ENGINEERING

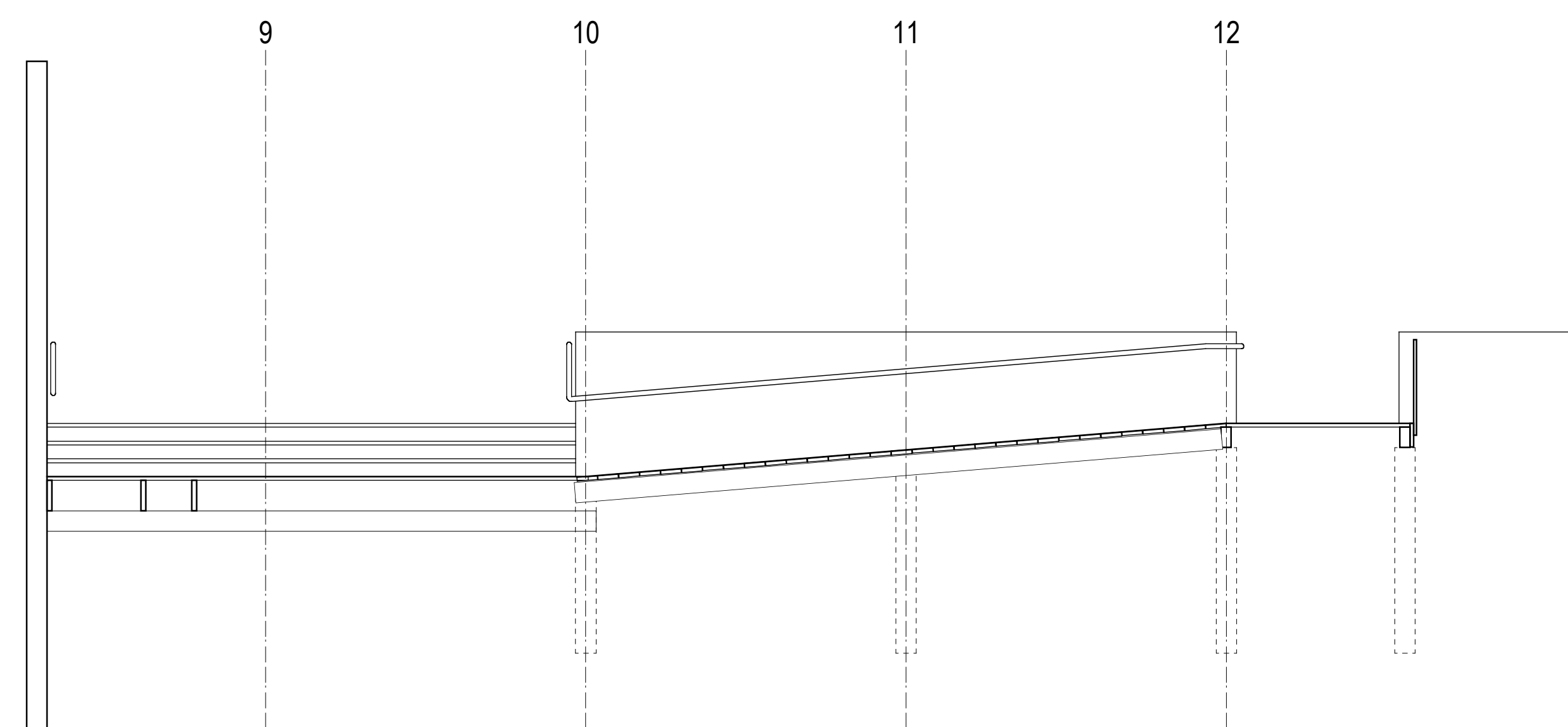
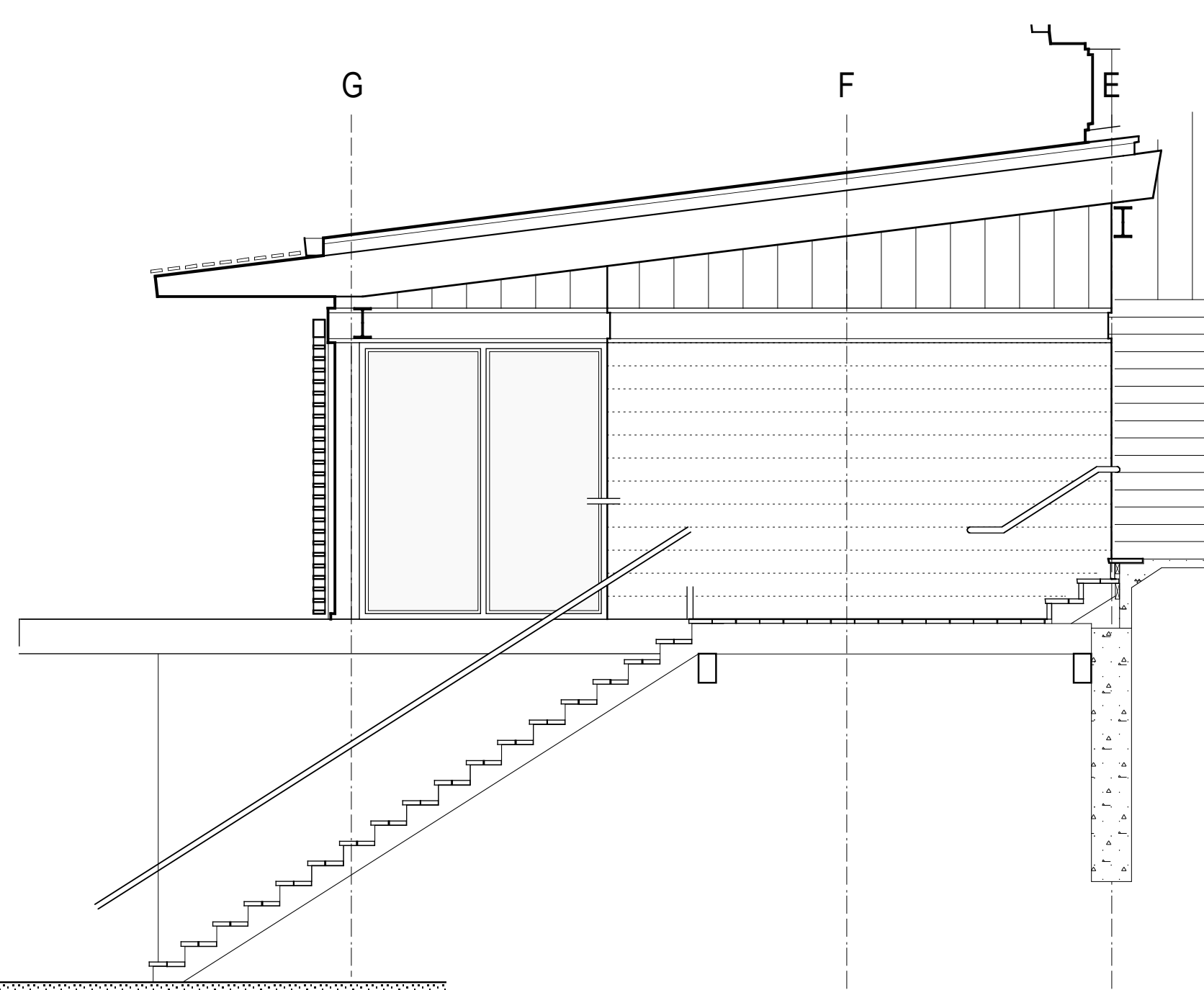
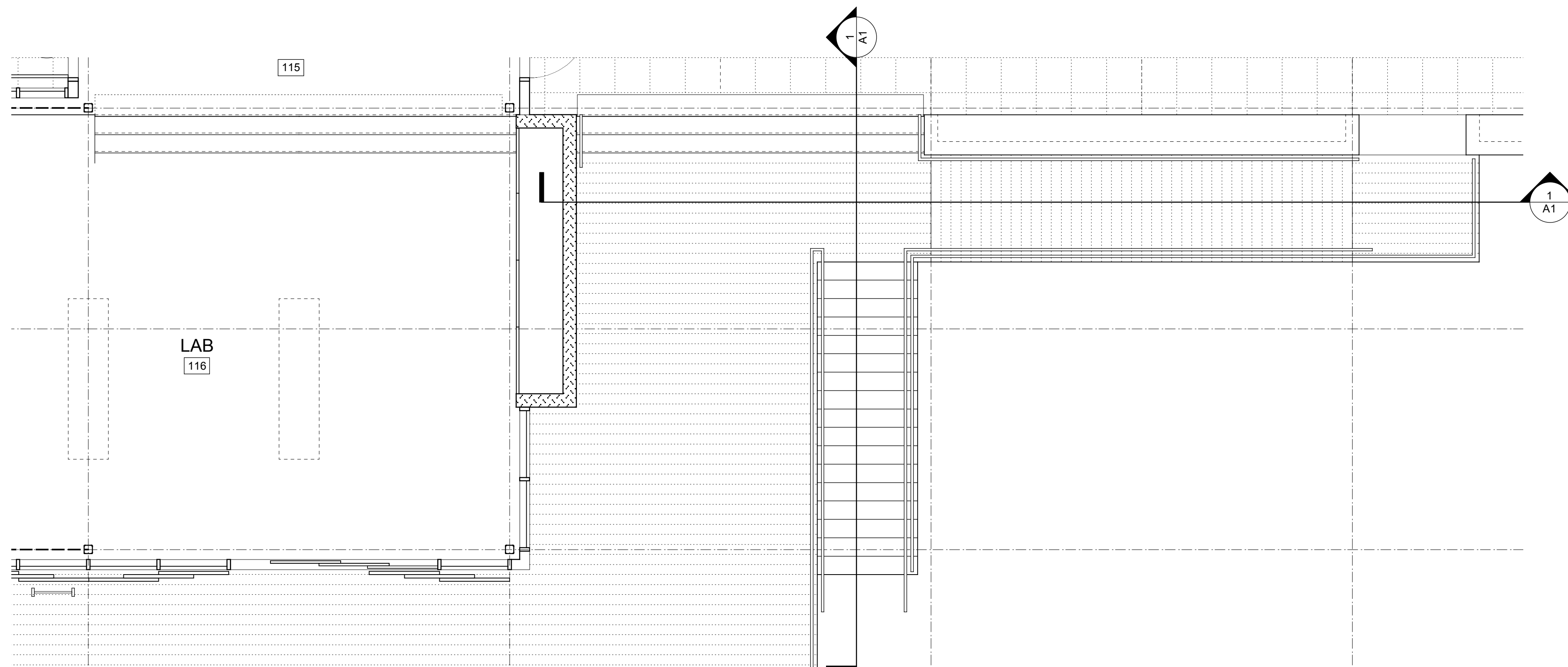
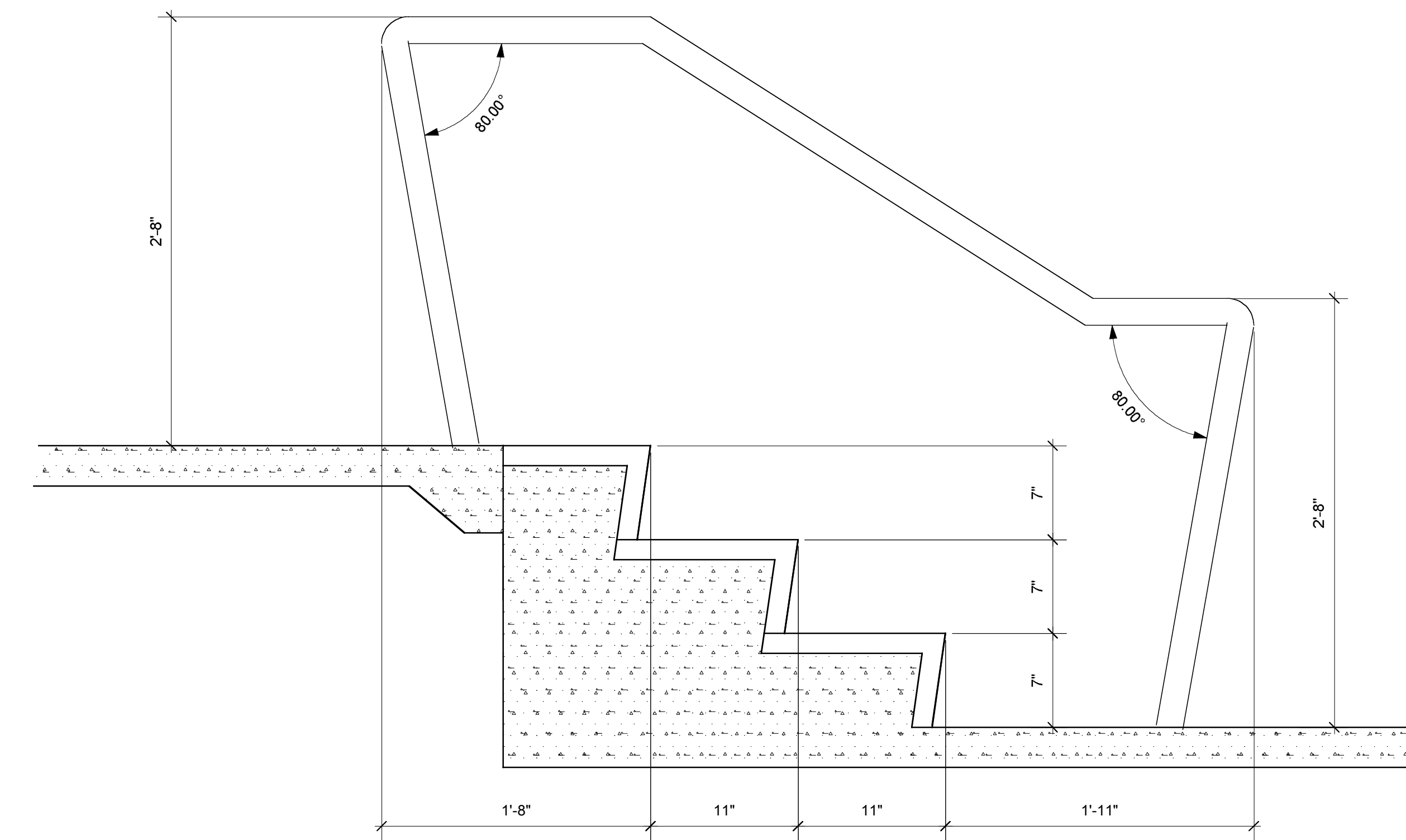
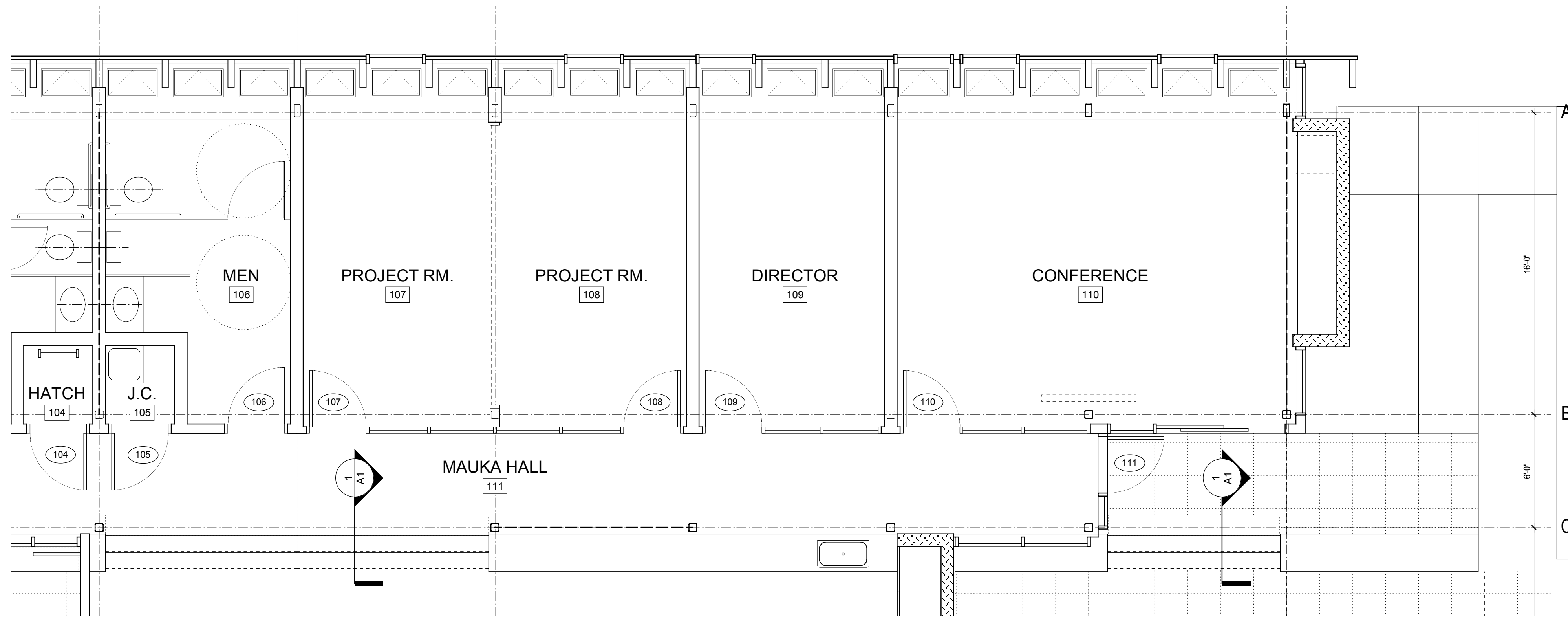
**Walter Vorfeld & Associates**  
10 Uliana Street  
Makawao, Maui, HI 96768  
808.572.3535 tel  
808.573.3616 fax

MECHANICAL ENGINEERING

**Hakalau Engineering**  
PO Box 252  
Hakalau, Hawaii 96710  
808.961.6206 tel

ELECTRICAL ENGINEERING

**Wallace T. Oki, PE, Inc.**  
808.961.9666 x22



## STAIR & RAMP SECTIONS & DETAILS

Drawn by:	BLF	Job Number:	2804.00
Checked by:		Scale:	1/4" = 1'-0"
Plot Date:		Issue Date:	11 AUG 08

A  
6.5