

# ENERGY LAB

Hawai'i  
Preparatory  
Academy

Kamuela, Hawaii

## FLANSBURGH ARCHITECTS

77 North Washington Street  
Boston, Massachusetts 02114  
617.367.3970 tel  
617.720.7873 fax  
www.faiarchitects.com

Architecture  
Master Planning  
Space Planning  
Interior Design

PROJECT MANAGEMENT  
**Pa'ahana Enterprises, LLC**  
P.O. Box 109  
Kealahou, HI 9675  
808.323.2304 tel/fax

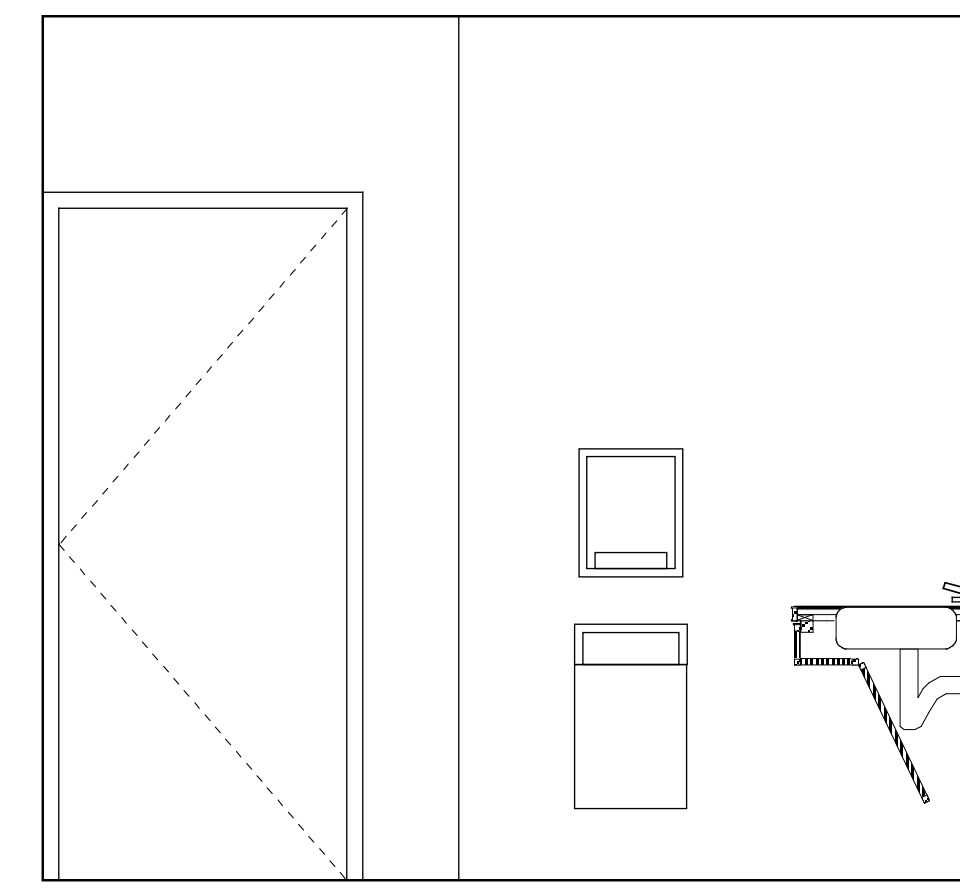
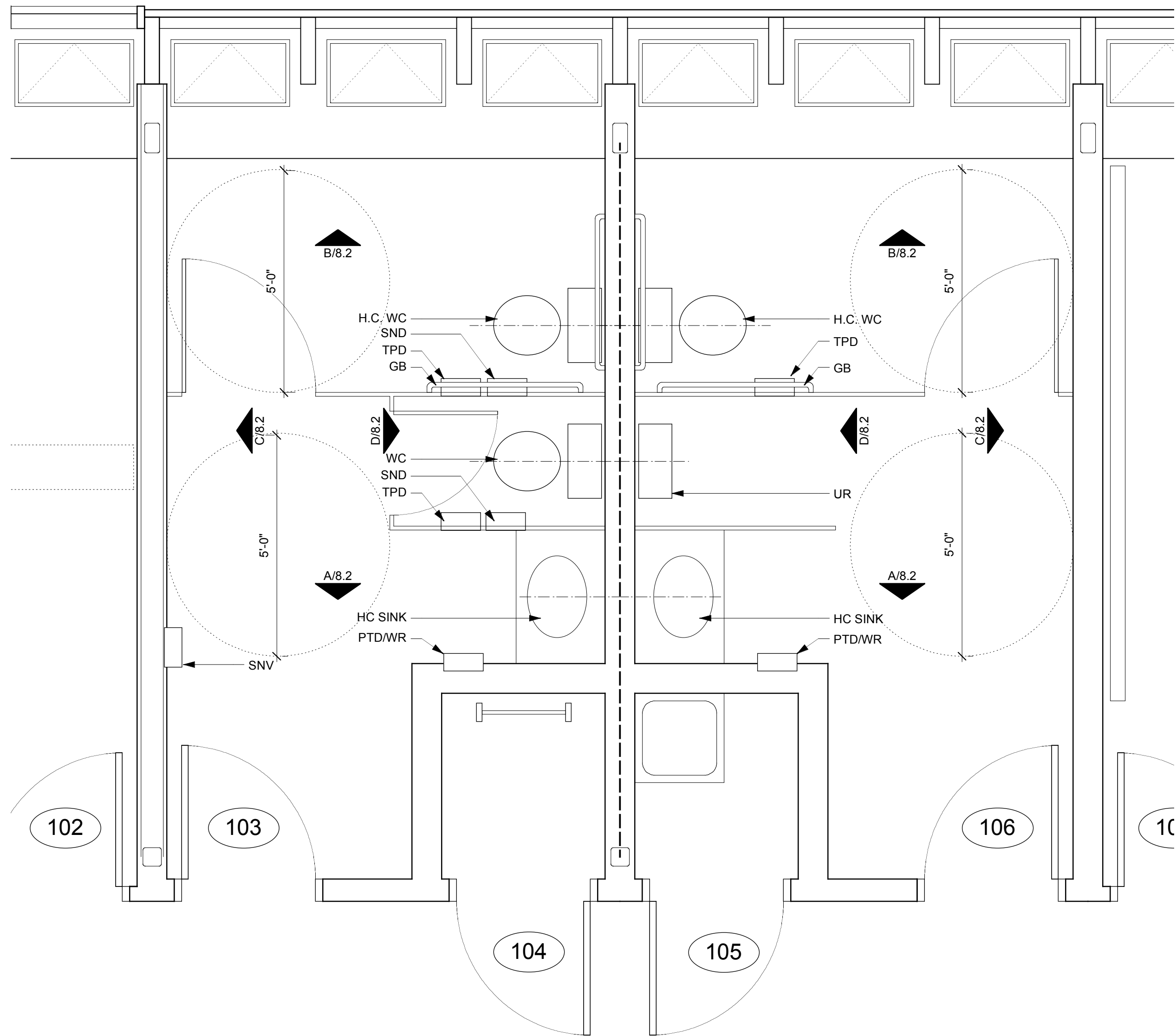
SUSTAINABILITY  
**Buro Happold Consulting Engineers PC**  
100 Broadway, 23rd Floor  
New York, NY, 10005  
212.334.2025 tel

CIVIL ENGINEERING  
**Belt Collins Hawaii Ltd.**  
2153 North King Street, Suite 200  
Honolulu, Hawaii 96819  
808.521.5361 tel  
808.538.7819 fax

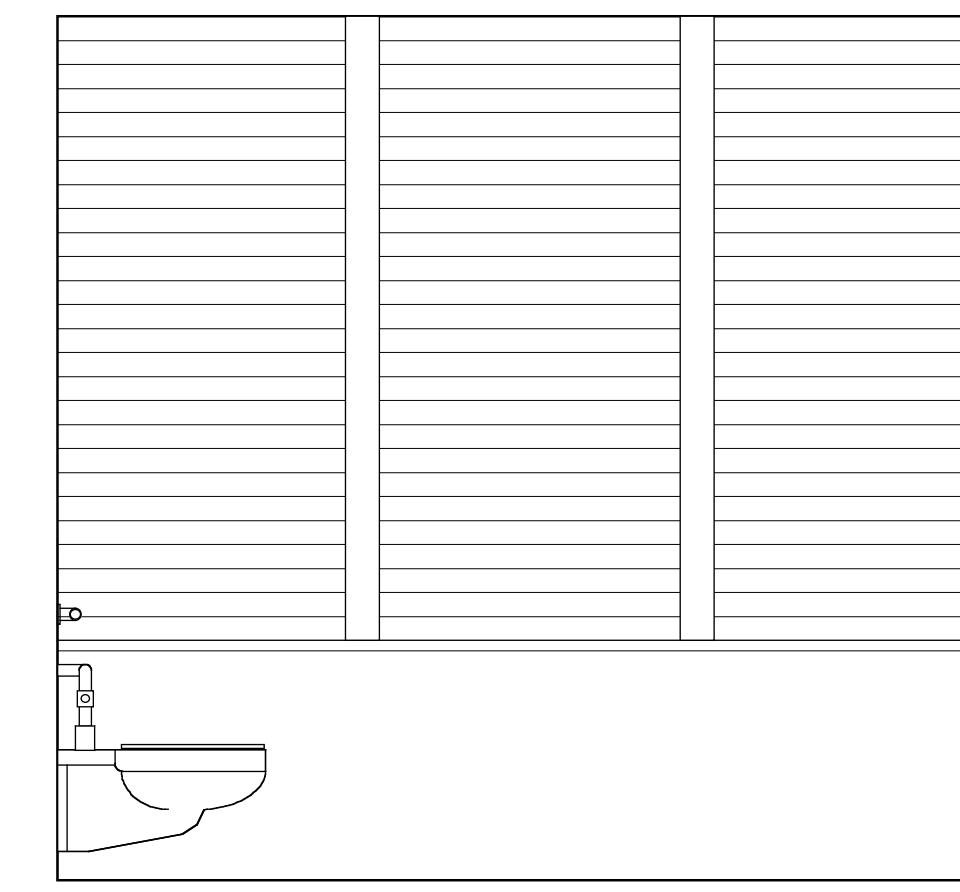
STRUCTURAL ENGINEERING  
**Walter Vorfeld & Associates**  
10 Uliana Street  
Makawao, Maui, HI 96768  
808.572.3535 tel  
808.573.3616 fax

MECHANICAL ENGINEERING  
**Hakalau Engineering**  
PO Box 252  
Hakalau, Hawaii 96710  
808.961.6206 tel

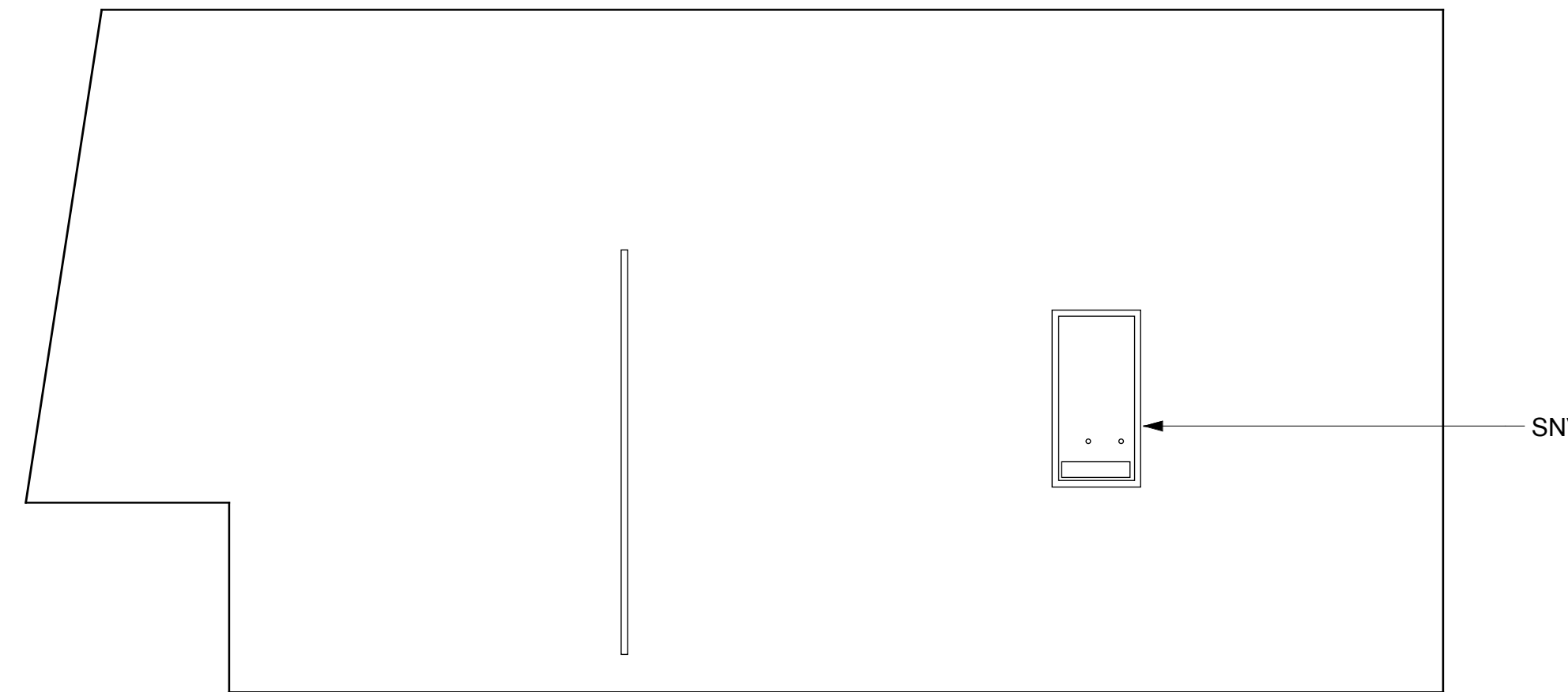
ELECTRICAL ENGINEERING  
**Wallace T. Oki, PE, Inc.**  
808.961.9666 x22



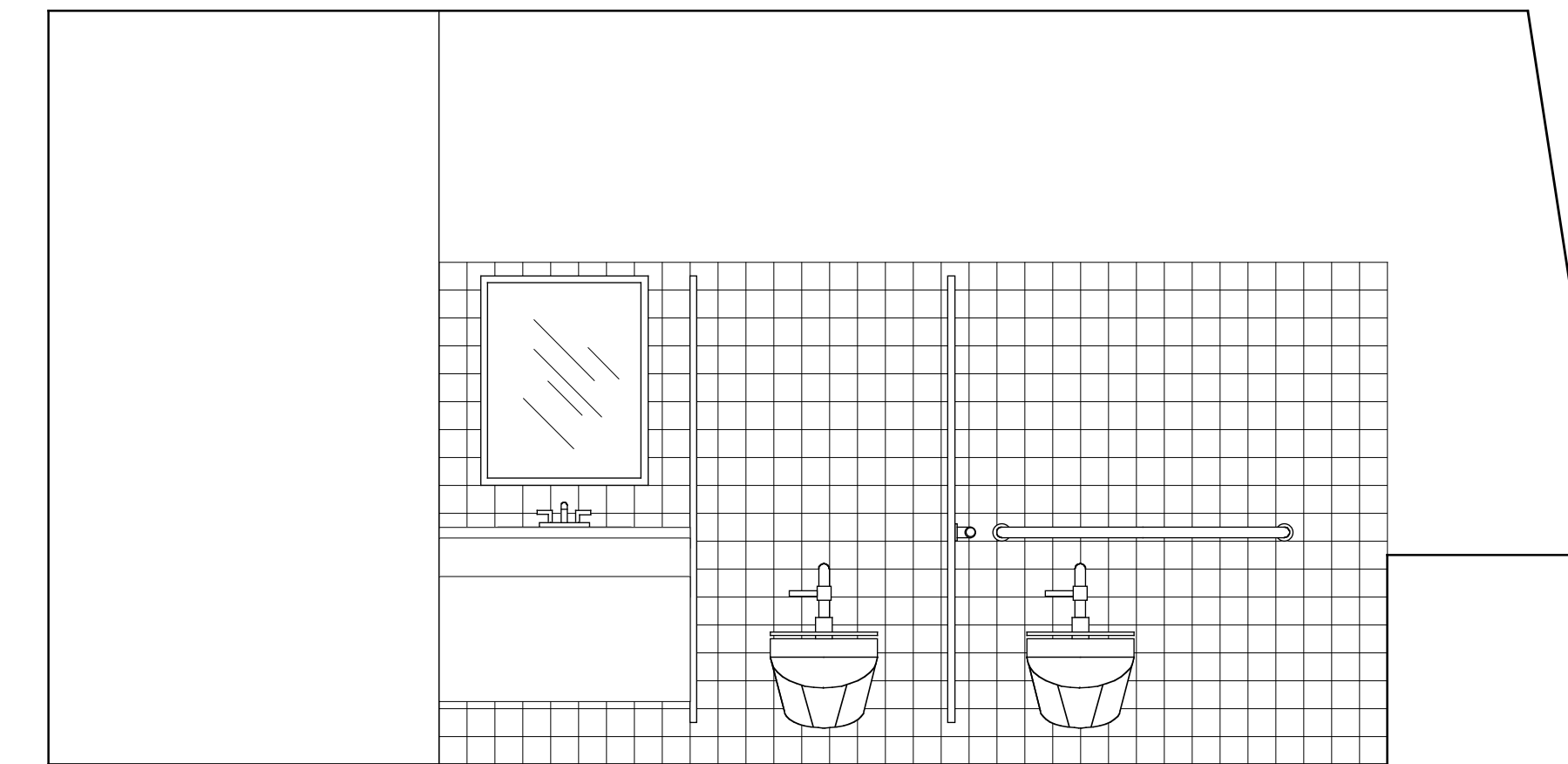
A TOILET ELEVATION  
1/4"=1'-0"



B TOILET ELEVATION  
1/4"=1'-0"



C TOILET ELEVATION  
1/4"=1'-0"



D TOILET ELEVATION  
1/4"=1'-0"

WR (10800.14) Waste Receptacle Recessed	PTD (10800.12) Paper Towel Dispenser Semi-Recessed (Roll Type)	SNV (10800.21) Sanitary Napkin Vendor Recessed at Wall	SND (10800.22) Sanitary Napkin Disposal	TPD (10800.11) Toilet paper dispenser (one at each stall)	CH (10800.51) Coat hook (provide one in all stalls)	PS (10160.02) Privacy screen Metal system	GB (10800.41) Grab bar (42" long)	DFR (15400.01) Drinking fountain recessed	DF (15400.01) Drinking fountain (accessible)
WC (15400.01) Water closet	HC LAV (15400.01) Handicapped Lavatory	LAV (15400.01) Lavatory	UR (15400.01) Urinal	MR-HC (10800.31) Mirror/ SD at access sink 24w x 30h, 24w x 36h	HC WC (15400.01) Handicapp Water closet				

Plumbing Fixtures and Toilet Accessories Typical Mounting Heights and Locations

## TOILET PLANS

Drawn by: BF Job Number: 2804.00  
Checked by: Scale: 1/2" = 1'-0"  
Plot Date: Issue Date: 11 AUG 08

A  
8.1