

ENERGY LAB
Hawai'i Preparatory Academy

Kamuela, Hawaii

FLANSBURGH ARCHITECTS

77 North Washington Street
Boston, Massachusetts 02114
617.367.3970 tel
617.720.7873 fax
www.fairchitects.com
Architecture
Master Planning
Space Planning
Interior Design

PROJECT MANAGEMENT

Pa'ahana Enterprises, LLC
P.O. Box 109
Kapaeha, HI 9675
808.323.2304 tel/fax

SUSTAINABILITY

Buro Happold Consulting Engineers PC
100 Broadway, 23rd Floor
New York, NY, 10005
212.334.2025 tel

CIVIL ENGINEERING

Belt Collins Hawaii Ltd.
2153 North King Street, Suite 200
Honolulu, Hawaii 96819
808.572.5351 tel
808.573.7819 fax

STRUCTURAL ENGINEERING

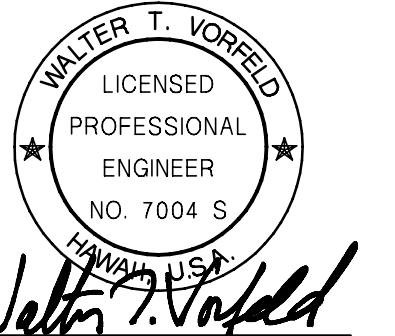
Walter Vorfeld & Associates
10 Ulana Street
Makawao, Maui, HI 96768
808.572.3535 tel
808.573.3616 fax

MECHANICAL ENGINEERING

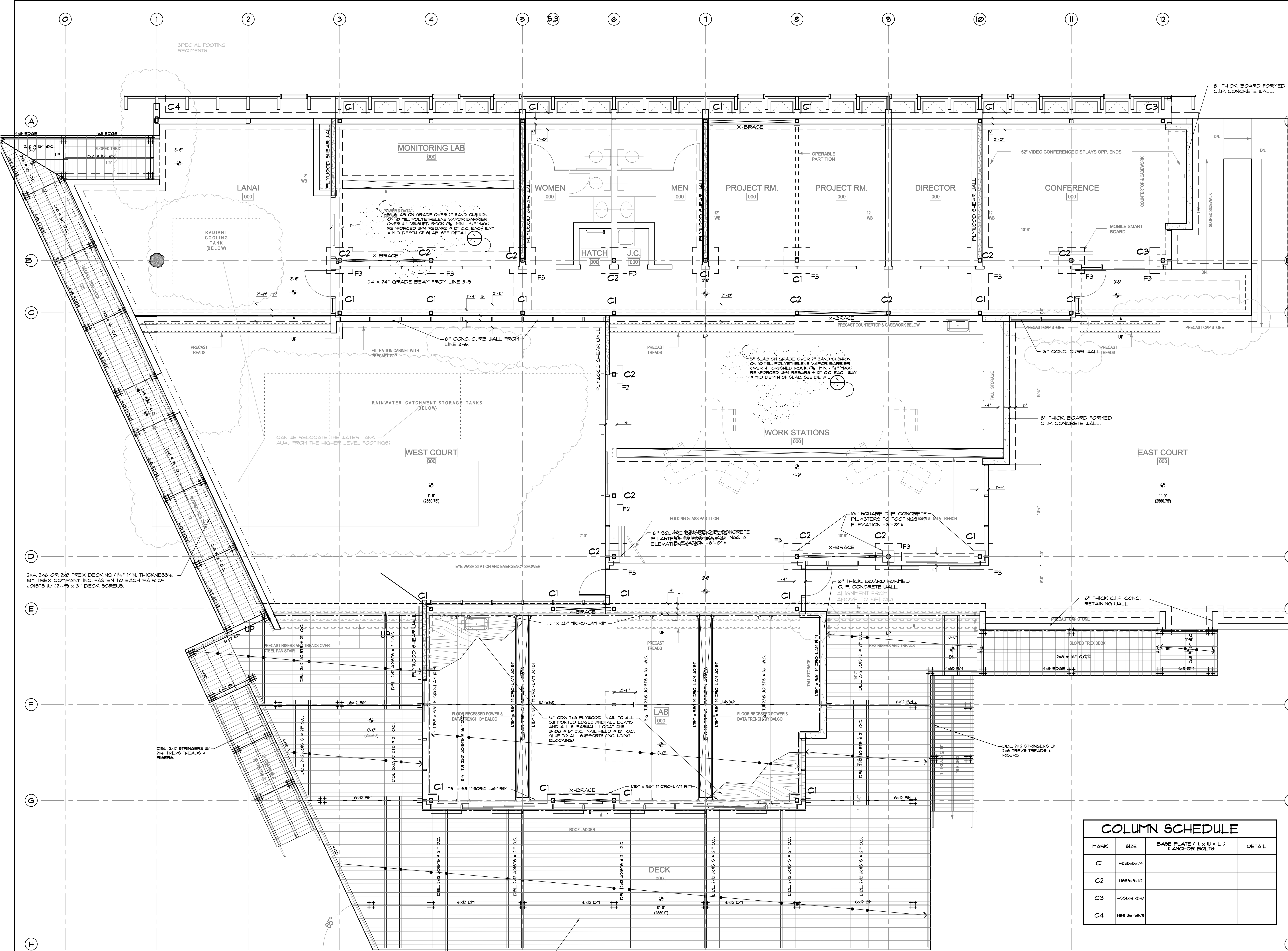
Hakalau Engineering
PO Box 252
Hakalau, Hawaii 96710
808.961.6206 tel

ELECTRICAL ENGINEERING

Wallace T. Oki, PE, Inc.



This work was performed by me or under my supervision and construction of this project will be under my observation (observation of construction as defined in Section 15-11.2-2), of the rules and regulations of the Board of Professional Engineers, Architects and Surveyors of the State of Hawaii.

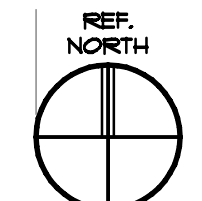


COLUMN SCHEDULE			
MARK	SIZE	BASE PLATE (L x W x L) & ANCHOR BOLTS	DETAIL
C1	H565x5x1/4		
C2	H565x5x1/2		
C3	H565x6x5/8		
C4	H565x6x5/8		

MAIN LEVEL FOUNDATION & FRAMING PLAN

Drawn by: _____ Job Number: WVA-28012
Checked by: _____ Scale: _____
Plot Date: _____ Issue Date: _____

S
2.2



MAIN LEVEL FOUNDATION & FRAMING PLAN
SCALE: 1/4" = 1'-0"

2x4, 2x6 OR 2x8 TREX DECKING (1/2" MIN. THICKNESS) BY TREX COMPANY INC. FASTEN TO EACH PAIR OF JOISTS W/ (2)-#3 x 3" DECK SCREWS.

2x4, 2x6 OR 2x8 TREX DECKING (1/2" MIN. THICKNESS) BY TREX COMPANY INC. FASTEN TO EACH PAIR OF JOISTS W/ (2)-#3 x 3" DECK SCREWS.