

# Image Creation Techniques

Macworld SF 2007  
Session IT821





# About Us

**Justin Elliott**

Penn State University

Senior Research Programmer

MacEnterprise.org steering committee member

**Greg Neagle**

Disney Animation

Senior Systems Engineer

MacEnterprise.org steering committee member



# Image Creation



# Image Creation

- Set up your work environment
- Build your perfect box
- Clean up the model
- Create snapshot of model
- Prepare the image for deployment
- Test!



# Set up your work environment





# Set up your work environment

- Three disk partitions or volumes:
  - Model
  - Work
  - Test



# Set up your work environment

- Three disk partitions or volumes:
  - Model - use this volume to build your ideal box
  - Work
  - Test





# Set up your work environment

- Three disk partitions or volumes:
  - Model
  - Work - base OS with your imaging utilities. Make sure it has space for your image.
  - Test





# Set up your work environment

- Three disk partitions or volumes:
  - Model
  - Work
  - Test - use this volume to restore and test your image





Build your perfect box



# Build your perfect box

- Install OS onto model volume
- Create default local accounts
- Install applications
- Configure and customize



Clean up the model



# Clean up the model

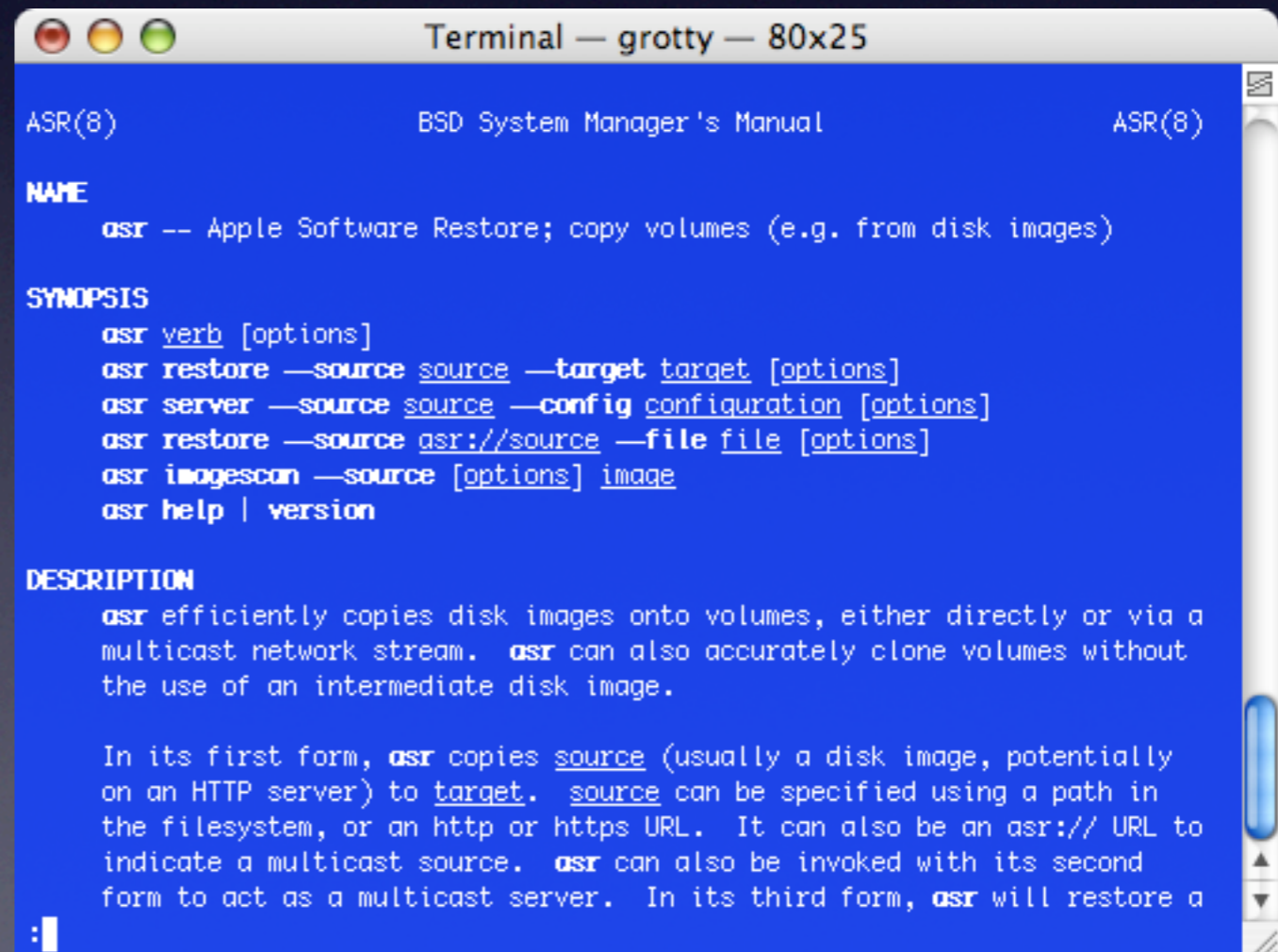
- Delete .lproj, cache files, swap, logs, etc.
- Remove any extra users
- Clean up default users' home dirs
- Don't forget to empty the trash!
- Cleanup might be easier booted from the Work volume





# Clean up the model

- Read the “man” page for asr!
- Open /Applications/Utilities/Terminal.app
- % man asr

A screenshot of a macOS Terminal window titled "Terminal — grotty — 80x25". The window has a blue background and displays the man page for the 'asr' command. The text is white and includes sections for NAME, SYNOPSIS, and DESCRIPTION. The terminal prompt is ASR(8).

```
ASR(8) BSD System Manager's Manual ASR(8)

NAME
  asr -- Apple Software Restore; copy volumes (e.g. from disk images)

SYNOPSIS
  asr verb [options]
  asr restore —source source —target target [options]
  asr server —source source —config configuration [options]
  asr restore —source asr://source —file file [options]
  asr imagescan —source [options] image
  asr help | version

DESCRIPTION
  asr efficiently copies disk images onto volumes, either directly or via a
  multicast network stream. asr can also accurately clone volumes without
  the use of an intermediate disk image.

  In its first form, asr copies source (usually a disk image, potentially
  on an HTTP server) to target. source can be specified using a path in
  the filesystem, or an http or https URL. It can also be an asr:// URL to
  indicate a multicast source. asr can also be invoked with its second
  form to act as a multicast server. In its third form, asr will restore a
```



# Clean up the model

- asr manual page recommends:

```
# Delete the database of volumes:
```

```
rm -rf /Volumes/<imagevol>/var/db/volinfo.database
```

```
# Delete the virtual memory swap files:
```

```
rm -rf /Volumes/<imagevol>/var/vm/swap*
```

```
# If it exists, delete the sleepimage file:
```

```
rm -rf /Volumes/<imagevol>/var/vm/sleepimage
```

```
# Delete the BootCache.playlist? (10.2 - 10.2.1 systems)
```

```
rm -rf /Volumes/<imagevol>/var/db/BootCache.playlist
```



# Clean up the model

- asr manual page “Optional” cleanup items:

```
# Configure Restore Image to start up in setup assistant:  
rm -rf /Volumes/<imagevol>/var/db/.AppleSetupDone
```

```
# If you want to be rid of the admin account you used to  
# set up the machine:  
nicle -raw /Volumes/<imagevol>/var/db/netinfo/local.nidb \  
delete /users/<admin>
```



# Clean up the model

- Consider capturing your final cleanup tasks as a script
- Ensure consistency!

```
#clean up global caches and temp data  
rm -rf /Library/Caches/*  
rm -rf /System/Library/Caches/*  
rm -rf /Users/Shared/*  
rm -f /private/etc/ssh_host*
```



Create snapshot of model



# Create snapshot of model

## What tool to use?

Disk Utility

asr

rsync

ditto

SuperDuper

Toast

SyncProX

Carbon Copy Cloner

NetRestore Helper

radmind

dd

...more?





# Create snapshot of model

## What tool to use?



## Carbon Copy Cloner

- Was the tool of choice a few years ago
- No longer recommended for 10.4
- Apple's tools today do the job very well



# Create snapshot of model

## What tool to use?



## NetRestore Helper

- Creates NetBoot-NetInstall images
- Creates deployment images
- Creates NTFS images for dual-boot  
Macs

<http://www.bombich.com/software/netrestore.html>



# Create snapshot of model

## What tool to use?



radmind

- Not an imaging tool  
(manages filesystem item-by-item)
- Steep learning curve

Powerful and flexible

<http://www.radmind.org>



# Create snapshot of model

## What tool to use?

### Disk Utility



- Builds ASR-restorable images
- Included with Mac OS X
- Recommended by 2 out of 2 presenters

`/Applications/Utilities/Disk Utility.app`



...so let's use Disk Utility...

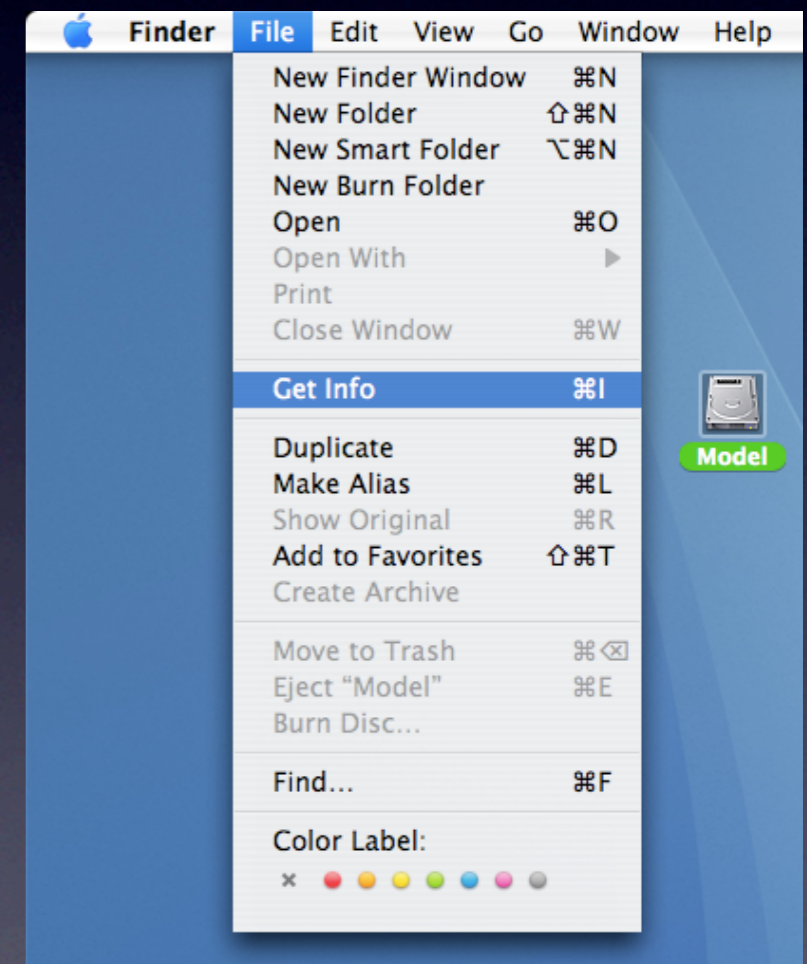
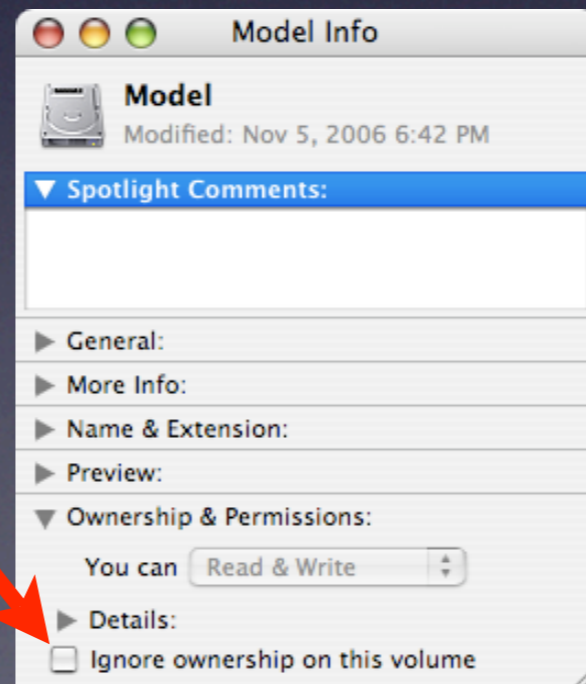


# Create snapshot of model



## Make sure permissions are enabled

- Boot from your Work volume
- Select 'Model' volume in Finder
- Get Info, "Ignore ownership..." should not be checked.



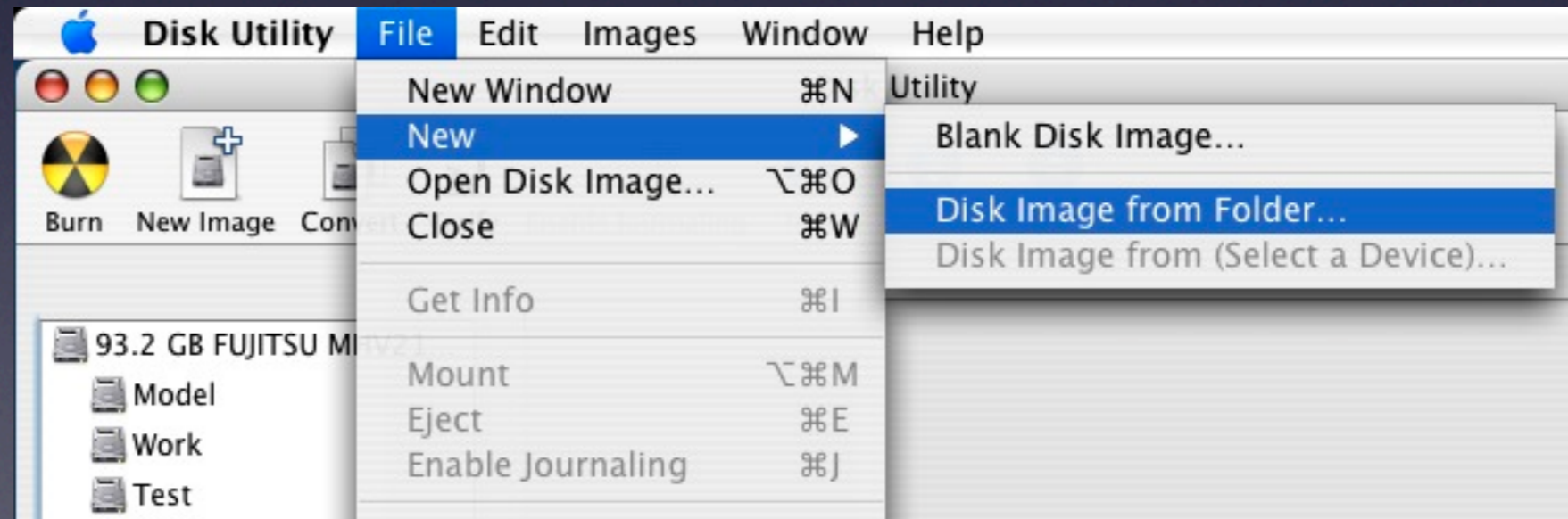


# Create snapshot of model



## Disk Utility

- Turn off virus scanning
- File → New → Disk Image from Folder



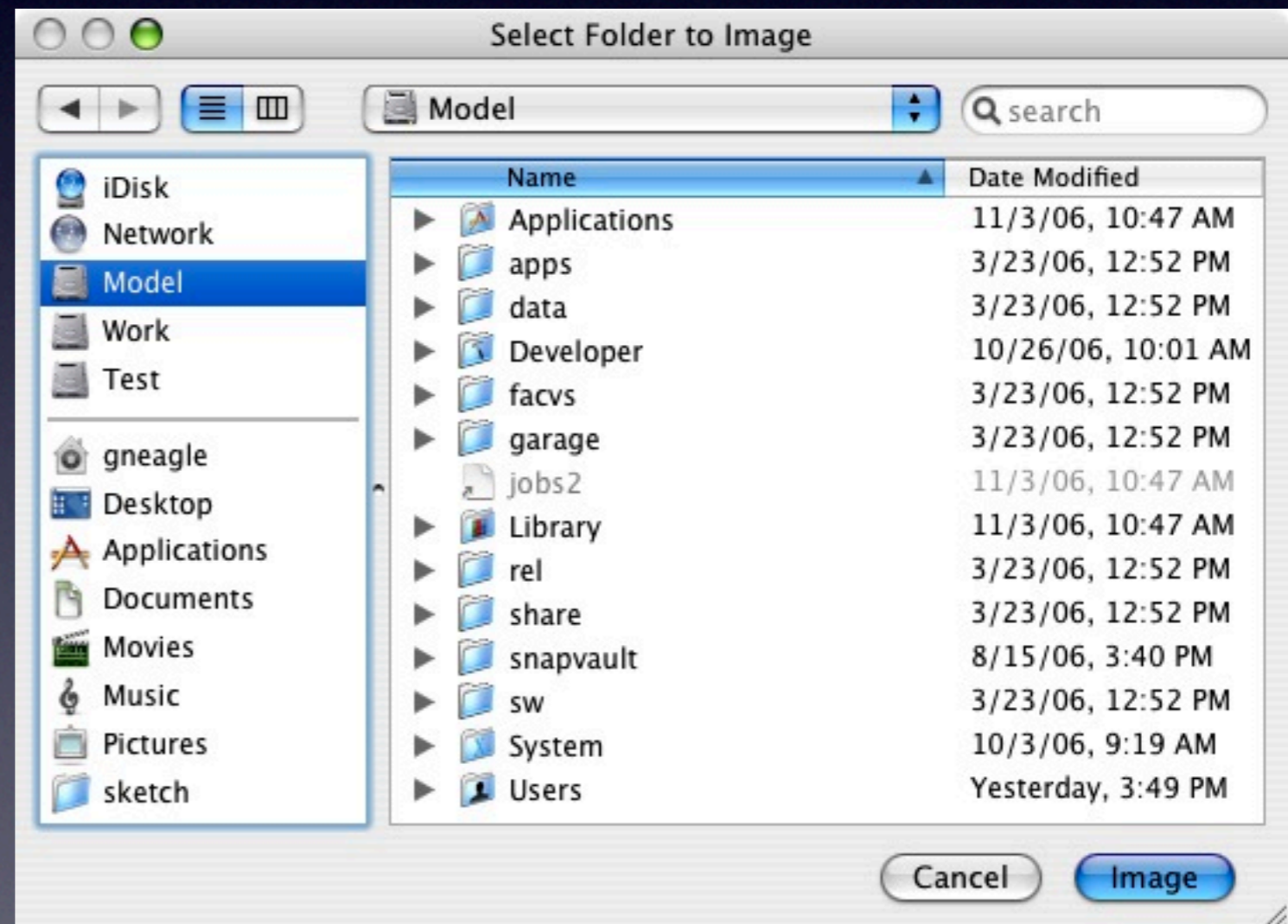


# Create snapshot of model



## Disk Utility

Select Model volume



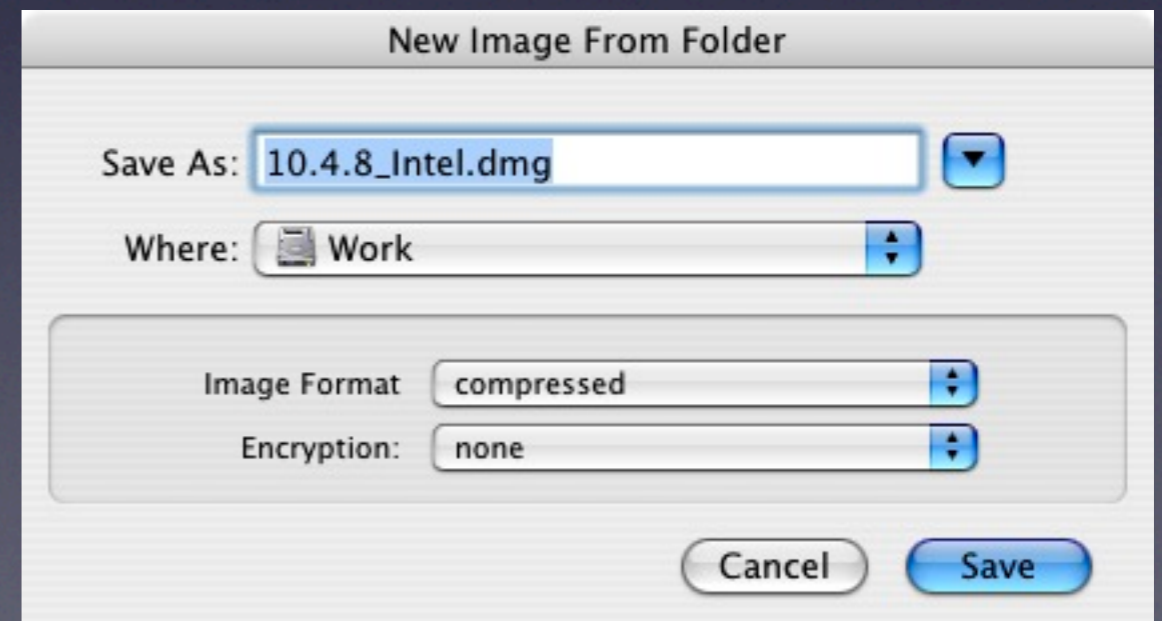


# Create snapshot of model



## Disk Utility

- Don't save your Model disk image on the Model volume!
- Set Image Format to “Compressed”



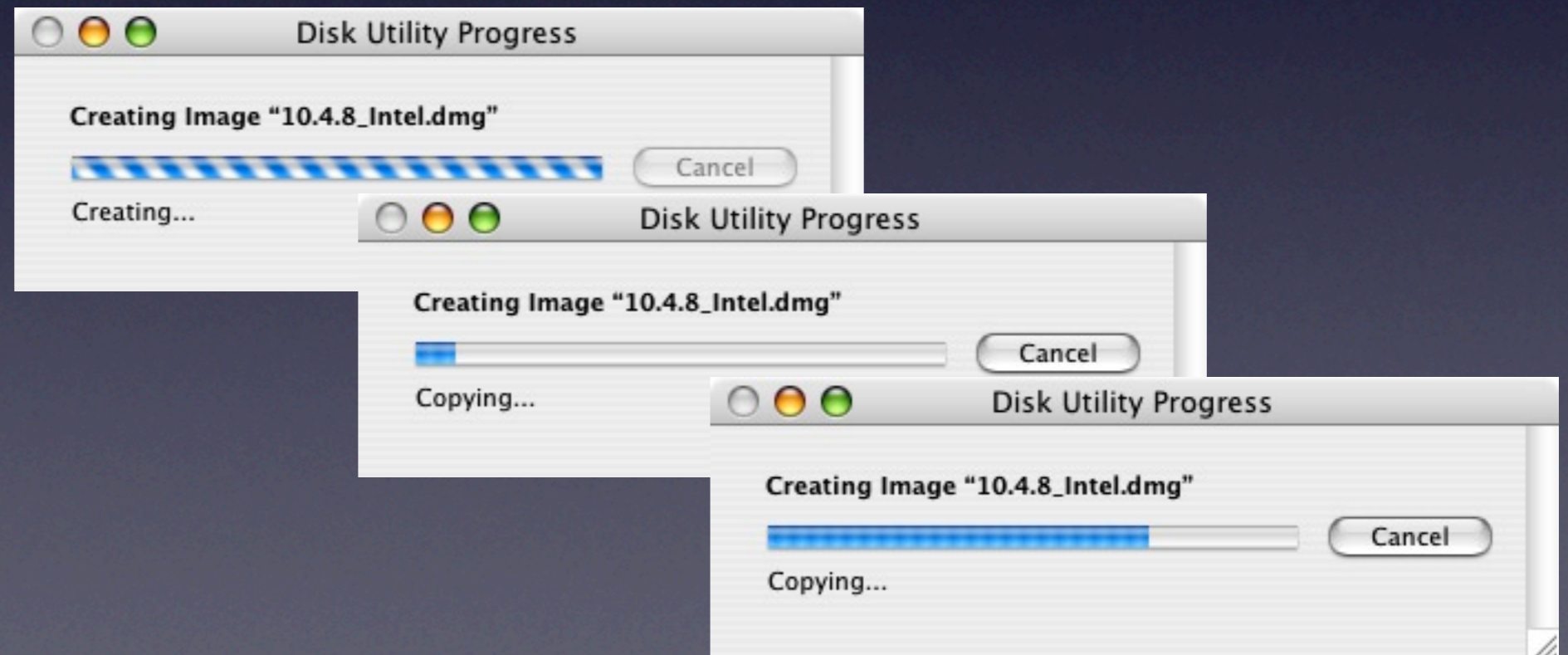


# Create snapshot of model



## Disk Utility

- This can take a while. Go get some lunch.....





Prepare the image for  
deployment

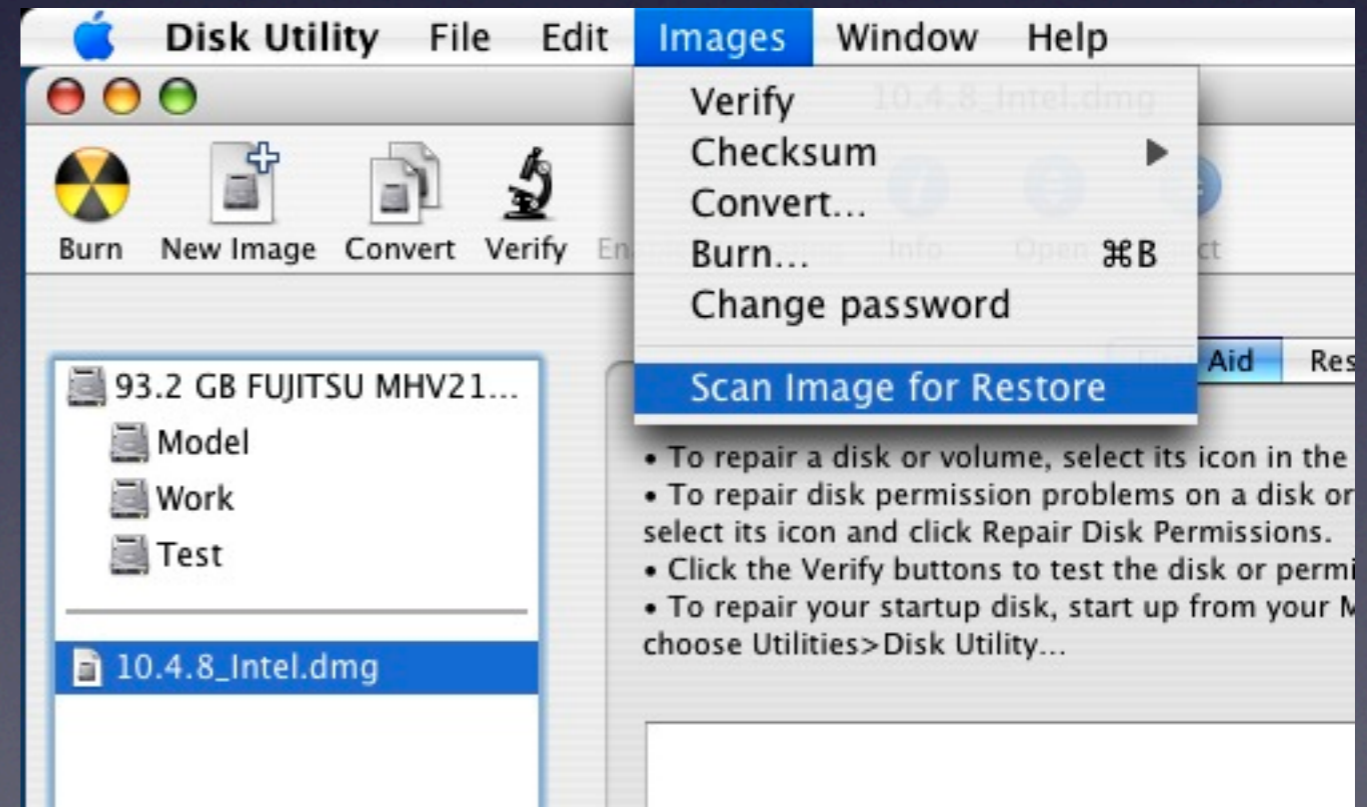


# Prepare the image for deployment



## Disk Utility

- Scan the image for restore
- Adds checksums to image to verify restored data





# Prepare the image for deployment



## Disk Utility

- Ready to test!



10.4.8\_Intel.dmg



Test!



# Testing your image



Restore your image to your Test volume

- You can use Disk Utility



- or PSU Blast Image Config



- or NetRestore



- or command line “asr” !



# Testing your image



## Fixing minor image issues

- Whoops! I forgot something in my image. Do I have to start over?
- Maybe not...
- While testing, can save images as read-write and make simple mods



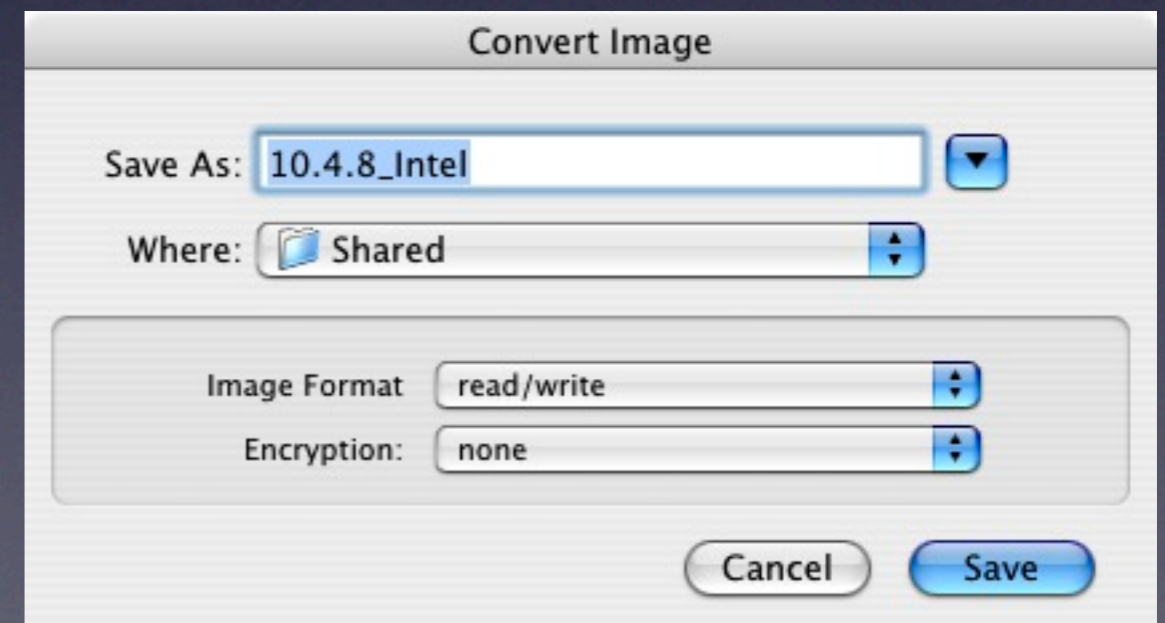


# Testing your image



## Fixing minor image issues

- Convert image to read-write
- Mount the image
- Make your changes
- Convert back to compressed
- Don't forget to rescan for restore





# Testing your image



## Fixing bigger image issues

- Reboot from your Model volume
- Make your changes
- Clean up your model
- Create snapshot of model
- Test!

(does this sound familiar?)





# Tips

- Keep images backed up! Save to one large external, mirrored FireWire HD, etc.
- Make images of clean OS X installs, saves time with new image creation.
- Compressed images will \*restore\* quicker than non-compressed images!



# Q&A / Discussion



# Continue the Learning ...

- ***IT831: Image Deployment Methodologies***
  - Thursday @ 1:00 pm - 2:30 pm
- ***IT841: Maintaining Order - Effective Image Maintenance Techniques***
  - Thursday @ 3:30 pm - 5:00 pm