

Keep Control of Your School's Leopard

Amanda Kunes

Download Presentation at:

<http://macpres09.shownets.net/>

<http://homepage.mac.com/ajkunes1/OSX/index.htm>

Session Scope

- Managing user's environment via WorkGroup Manager and some client settings.
 - Users, Workgroups, Computers, and Computer Groups, & Guest Computer
 - Managing Preferences in WGM
 - Various Client Settings

Server Configuration

- Leopard: simplified server configurations.
 - Standard
 - Workgroup
 - Advanced

Workgroup Manager

- Only available with the Advanced Configuration server setup.
- Accounts Management
- Preference Management Users, Workgroups, Computers, and Computer Groups.
- Located Applications/Server/Workgroup Manager

Accounts

- Local Home
- External Homes
- Guest Account
- Mobile Home
 - Syncing & Non-Syncing
- Network Home

Accounts: Local Homes

- Locally created on client.
- The user account does not reside on server.
- Can still access the server by using the Go menu.

Accounts: External Homes

- New to Leopard
- User's home directory is stored on an external USB or Firewire.
- Account can be managed via Workgroup Manager.
- Less expensive than a laptop.

Accounts: Guest

- New with Leopard
- When user logs out of computer, the account is deleted.
- New account for every user.

Accounts: Syncing Mobile

- The user's files are stored locally on the computers hard drive then synced to the server.
- Great for a one to one environment.
- The sync to the server is a mirror backup of the files/folders selected.
- The entire users home directory doesn't need to be synced.
- Works great when the server is backed up and the client sync regularly.

Accounts: Syncing Mobile

- Server Side File Tracking for Mobile Home Sync
- Database on the server tracks the data that has been synced to the server.
- Speeds up syncing
- More information:
http://images.apple.com/server/macosx/docs/User_Management_v10.5.mnl.pdf
pages 131 to 135.

Accounts: Non-Syncing Mobile

- No files are synced to the server.
- Great for students that are:
 - Users that are too young for their own accounts
 - Group project type labs; journalism
 - User's that don't typically save their files.
- Account is not deleted when the user logs out.

Accounts: Non-Syncing Mobile

- To get files to the server, have a shared folder available on the dock.
- The settings are exactly like a syncing account, except nothing is set to sync.

Accounts: Network Homes

- Meant for computers where several users use the machines during a day.
- The entire user's home directory is served from the server.
- Can run slow for certain applications, example Microsoft Office.
- User's environment will look the same regardless of the computer.

Accounts: Network Homes

- Network Intensive
- Re-direct certain files/folders to the hard drive of the local computer.
 - Example: Internet Cache, Microsoft User Data.
 - Check out NHR for Redirecting these folders:
<http://jochsner.dyndns.org/Scripts/NHR.html>

Workgroup Manager

- Users
- WorkGroups
- Computers
 - Guest Computer
- Computer Groups

Guest Computer

- If you migrated your server or directory from 10.4, then you already have a computer named Guest Computer in Computers.
- Otherwise add this setting: Server menu, Create Guest Computer.
- The Guest Computer account will apply preferences to any computer not controlled via a Computer Group.

Computer Groups

- Way to manage computers in groups
- Computer Groups can contain other groups.
- A computer can be a member of multiple groups.

- Computer Groups = 10.5
- Computer Lists = 10.4

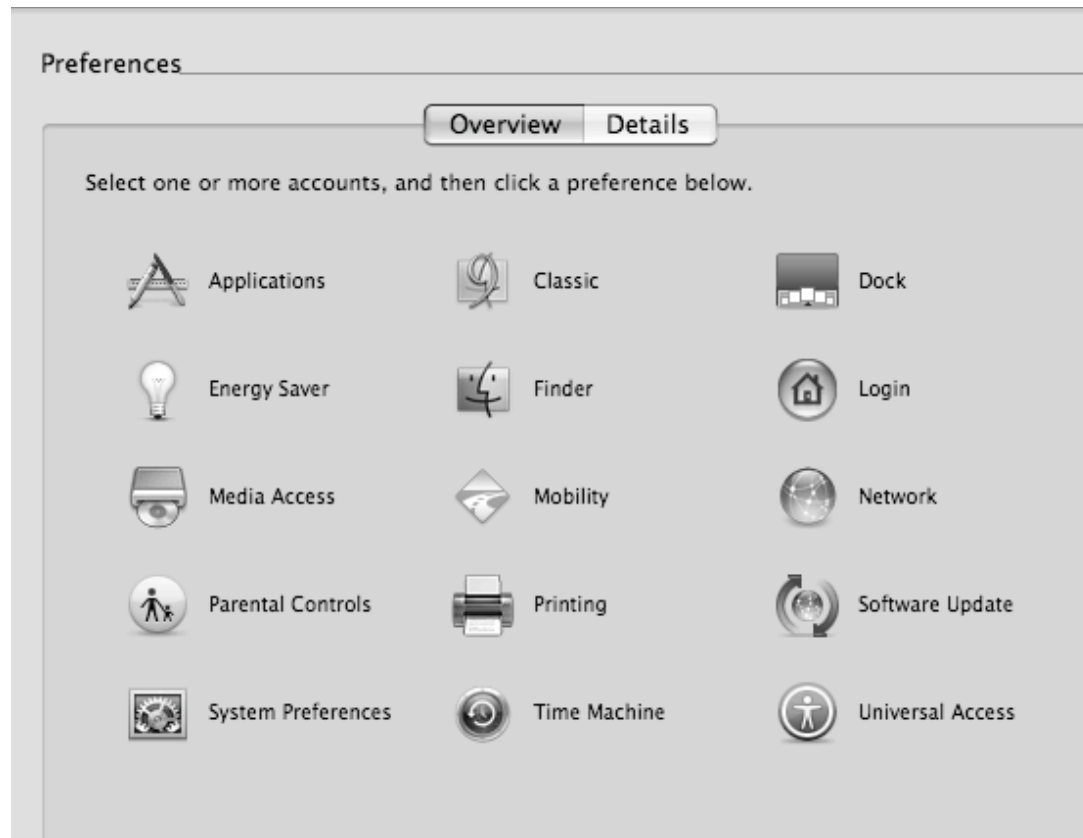
User Environment

- WorkGroup Manager will Control the User Environment for:
 - Users
 - Groups
 - Computers
 - Computer Groups

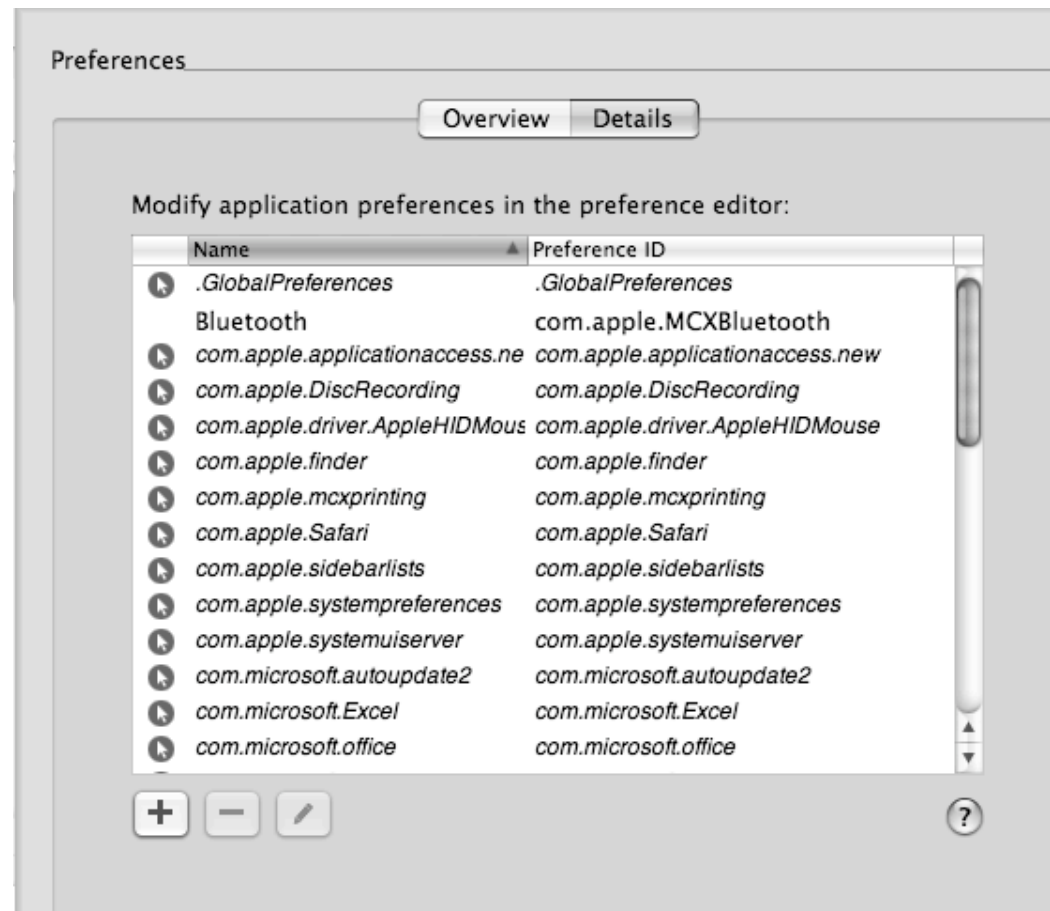
User Environment

- Ways to Manage Preferences
 - Preference Overview
 - Preference Detail
 - Apple's Managed Client Applications
 - Importing an Application's Preference Manifest
 - Importing individual Preferences from your own account/computer.

Preferences Overview



Preferences Detail



Preferences Overview

- Preference options for Users and Workgroups are different than preference options for Computers and Computer Lists.
- A preference is being managed if it has an arrow beside it.

Preferences: Hierarchy

- Hierarchy
 - User
 - Computer
 - Computer Group
 - Workgroup

Preferences: Occurrence

- Never – user can always change setting.
- Once – WGM sets the preference the first time, the user can then change it themselves.
- Always – User is forced to have the setting.
- Often – only available with Preference Manifests, user can change their setting, but it reverts the next time they login.

Preference: Overview

- Dock Items
- Printers (footers)
- Login Window
- Login Items
- Access to System Preferences
- Media Access
- Parental Controls

Preference Overview: Login Items

- These only work if you bind the computer to the server with DHCP Supplying the Bind.

Preference Overview: Energy Saver

- If you have laptops going to sleep after a certain amount of time, you can't wake them back up again because of the wireless connection also going to sleep.
- This doesn't happen with computers that are hard wired.

Preference Overview: Mobile Accounts

- Use the Computer Groups to manage Sync Settings
- Use WorkGroups to manage the specific items that get synced as well as the time they get synced.

Preferences: Best Practice

- Set Preferences at the same level if you can. Typically Workgroup and Computer Group.
- If you upload preferences from your own account, keep a copy of them for future use.

Preferences: Best Practice

- Be aware of the hierarchy of preferences.
- Use System Profiler on client to verify settings.
- Test before inflicting settings on users!
 - Find out what their needs and wants are...

Preference Detail

- Can be used to share out “other” preferences.
- Preference Manifest: An XML file describing an application’s preference keys.
- Manifest Lists from Apple

Preference Detail: Documentation

- [http://images.apple.com/server/macosx/docs/User Management v10.5.mnl.pdf](http://images.apple.com/server/macosx/docs/User_Management_v10.5.mnl.pdf)
pages 231 – 238
- [http://developer.apple.com/documentation/MacOSXServer/Conceptual/Preference Manifest Files/Preference Manifest Files.pdf](http://developer.apple.com/documentation/MacOSXServer/Conceptual/Preference_Manifest_Files/Preference_Manifest_Files.pdf)

Preference Detail: Options

- Importing Individual Preferences from your own account/computer.
 - ~/Library/Preferences
- Importing an Application's Preference Manifest
 - From WGM select an Application & WGM will import all manifest lists.
- Apple's Managed Client Application
 - System/Library/CoreServices/Managed Client

Reading Preference Files

- WGM– Preferences Detail
- Plist Editor Pro
 - www.fatcatsoftware.com
 - \$25.00 for Pro version or Demo
- Property List Editor
 - provided on the Xcode Tools CD

MCX

- MCX is essentially the preferences that are passed from the server to the client.
- MCX Settings are cached on the local machines.

MCX

- MCX is updated on:
 - Start up
 - Login/Logout
 - Restart
 - Periodically while on the login window

MCX Preferences

- /Library/Preferences
 - Computer Specific Preferences
- ~/Library/Preferences
 - User Specific Preferences
- /Library/Managed Preferences
 - Preferences Managed from Server
- /var/db/dslocal/nodes/Default/
 - Various mcx settings in xml format

Troubleshooting: Basic

- Make sure the date and time is set correctly on client. If more than 5 minutes the client won't login to the server.
- Make sure the client is properly bound to the server via Directory Access.
 - Drop, restart, re-add to DA, then restart...

Troubleshooting: MCX

- Launch Terminal
- Run the mcxquery command
 - mcxquery –user <username>
 - mcxquery –group <groupname>
 - mcxquery –computer <computername>

Troubleshooting: MCX

- Login as the user.
- Launch System Profiler from / Applications/Utilities
- On the left, under Software, select Managed Preferences.
- On the right the details of the preferences being applied to the Computer.

Troubleshooting: MCX

- `sudo dscl . -delete /Computers`
- `sudo rm -rf /Library/Managed\ Preferences`

Troubleshooting: Mobile Accounts

- Problem: User can't sync:
 - Verify Server Side File Tracking selected
 - Verify user isn't over Disk Quota on Server
 - On Server
 - `rm -rf PathtoHomeDirectory/.FileSync`
 - From the user's home directory
 - Check out the logs under `PathtoHomeDirectory/Library/Logs/FileSync-Server/FileSync-server-verbose.log`
 - On Client
 - `rm -rf ~/.FileSync`
 - Check out the logs under the `~/Library/Logs/FileSyncAgent/FileSync/Agent-verbose.log`

Anti-Virus Software

- McAfee
- Norton
- Sophos
- Clamxav – free
- Intego

Setting Passwords

- Use the Password Assistant to help users pick passwords.

Keychain

- Can help users be secure by saving “Notes”
- Use this to secure those other passwords you are always forgetting.
- More safe than a post-it note under the keyboard.

Open Firmware Password

- On the Restore CD there is a utility to set this.
- Open Firmware on the PPCs
- EFI on the Intels
- To get around the password, change a stick of memory and zap pram.

FileVault

- Should not be used in an environment of Network Homes
- Set the FileVault Password.
 - This will help you if as an admin you forget a password or someone accidentally turns on filevault.

Creating an Image

- Set service order of networks
- Define district Wireless Networks
 - Turn off IPV6
- Turn on ARD and configure
- Security – disable remote control of infrared receiver

Resources

- Apple Support Server 10.5
 - <http://www.apple.com/server/documentation/>
- John DeTroye's Tips and Tricks
 - [http://web.me.com/johnd/JohnDs_Site/Tips %26 Tricks/Entries/2008/10/27 Tips & Tricks for Macintosh Management - Leopard files/tandtleo14.3.pdf](http://web.me.com/johnd/JohnDs_Site/Tips_%26_Tricks/Entries/2008/10/27_Tips_&_Tricks_for_Macintosh_Management_-_Leopard_files/tandtleo14.3.pdf)

Download Presentation at:

- <http://macpres09.shownets.net/>
- [http://homepage.mac.com/ajkunes1/
OSX/index.htm](http://homepage.mac.com/ajkunes1/OSX/index.htm)