

OfficeforMacHelp.com

Your unofficial source for help

OfficeforMacHelp.com

Your unofficial source for help

William Smith

Technical Analyst

Merrill Communications LLC

Saint Paul, MN

Deploying and Managing Office:Mac 2011

- ❑ Administrator's toolbox
- ❑ Deployment and Removal
- ❑ Configuration
- ❑ Management

Administrator's toolbox

Administrator's toolbox

Text editor

Useful for editing property lists, scripts or XML files

- BBEdit
- TextEdit *(free!)*
- TextWrangler *(free!)*

Administrator's toolbox

Package editor

Useful for modifying packages or creating your own

- Composer
- Iceberg *(free!)*
- InstallEase *(free!)*
- PackageMaker *(free!)*

Administrator's toolbox

Preferences editor

Useful for examining or modifying property lists

- defaults *(built-in!)*
- plistbuddy *(built-in!)*
- plutil *(built-in!)*
- Property List Editor *(free!)*
- Workgroup Manager *(free!)*

Administrator's toolbox

Deployment manager

Useful for deploying packages, configuring preferences and adjusting settings

- Apple Remote Desktop
- Casper
- munki (*free!*)

- Administrator's toolbox
- Deployment and Removal
- Configuration
- Management

Deployment and Removal

Deployment and Removal

Simple  Complex

Deployment and Removal

Simple  Complex

Manual

Pros

- Zero preparation
 - Uses least space
-

Cons

- No Customization
 - Time consuming to deploy
-

Ideal

- A small workgroup

Deployment and Removal

Simple  Complex

Manual

Modified

Pros

- Zero preparation
 - Uses least space
- Moderately customizable
 - Uses least space

Cons

- No Customization
 - Time consuming to deploy
- Time consuming to deploy

Ideal

- A small workgroup
- Small workgroups

Deployment and Removal

Simple  Complex

	Manual	Modified	Compiled
Pros	<ul style="list-style-type: none">• Zero preparation• Uses least space	<ul style="list-style-type: none">• Moderately customizable• Uses least space	<ul style="list-style-type: none">• Highly customizable
Cons	<ul style="list-style-type: none">• No Customization• Time consuming to deploy	<ul style="list-style-type: none">• Time consuming to deploy	<ul style="list-style-type: none">• Must be redone for each Office update• Uses more space
Ideal	<ul style="list-style-type: none">• A small workgroup	<ul style="list-style-type: none">• Small workgroups	<ul style="list-style-type: none">• Few and large homogeneous workgroups

Deployment and Removal

Simple  Complex

	Manual	Modified	Compiled	Scripted
Pros	<ul style="list-style-type: none">• Zero preparation• Uses least space	<ul style="list-style-type: none">• Moderately customizable• Uses least space	<ul style="list-style-type: none">• Highly customizable	<ul style="list-style-type: none">• Highly customizable• Uses least space
Cons	<ul style="list-style-type: none">• No Customization• Time consuming to deploy	<ul style="list-style-type: none">• Time consuming to deploy	<ul style="list-style-type: none">• Must be redone for each Office update• Uses more space	<ul style="list-style-type: none">• Requires scripting knowledge
Ideal	<ul style="list-style-type: none">• A small workgroup	<ul style="list-style-type: none">• Small workgroups	<ul style="list-style-type: none">• Few and large homogeneous workgroups	<ul style="list-style-type: none">• Many and large diverse workgroups

Deployment and Removal: Modified

Demo

Use TextWrangler to modify
the distribution.dist file

Deployment and Removal: Compiled

Video Demo

Use PackageMaker to create
a compiled package

Deployment and Removal: Scripted

Basic command line script:

```
installer -pkg /path/to/Office Installer.mpkg -target /
```

Deployment and Removal: Scripted

Basic command line script:

```
installer -pkg /path/to/Office Installer.mpkg -target /
```

Command line script with choices file:

```
installer -pkg /path/to/Office Installer.mpkg -target /  
-applyChoiceChangesXML /path/to/choices.xml
```

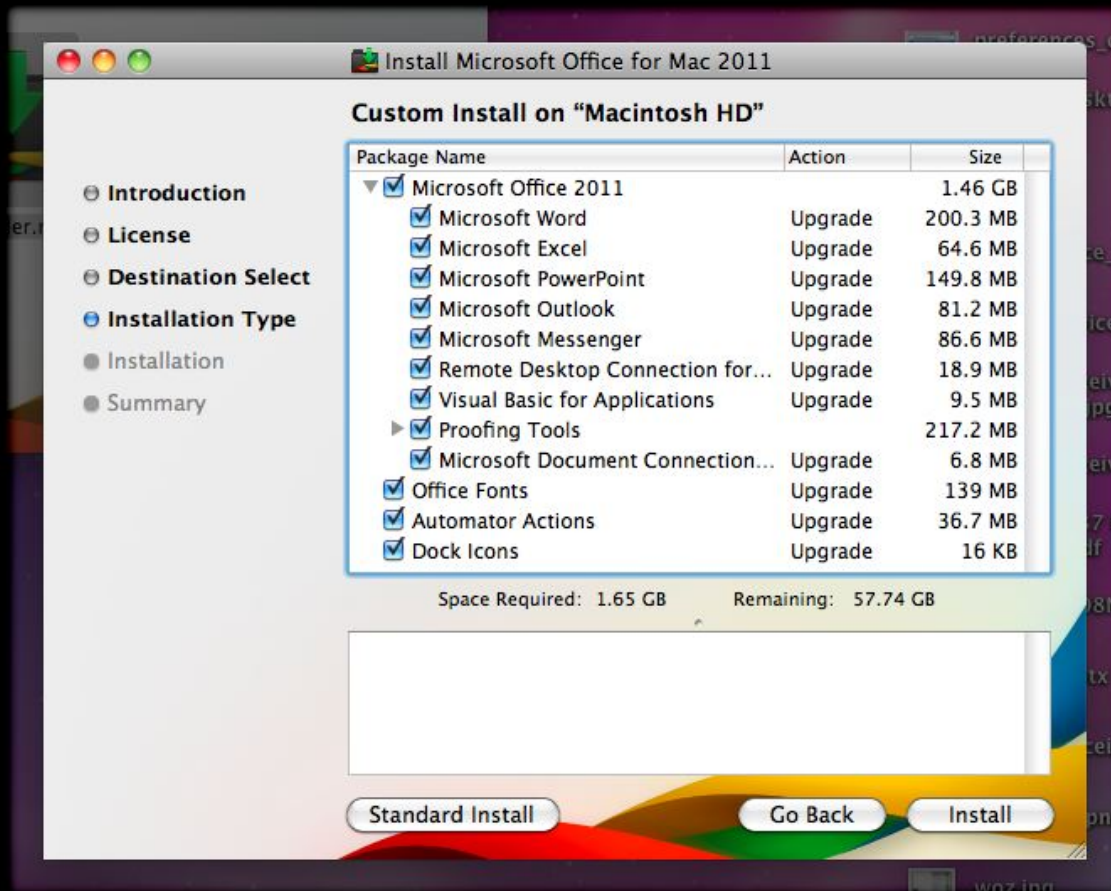
Deployment and Removal: Scripted

What's in a Choices file?

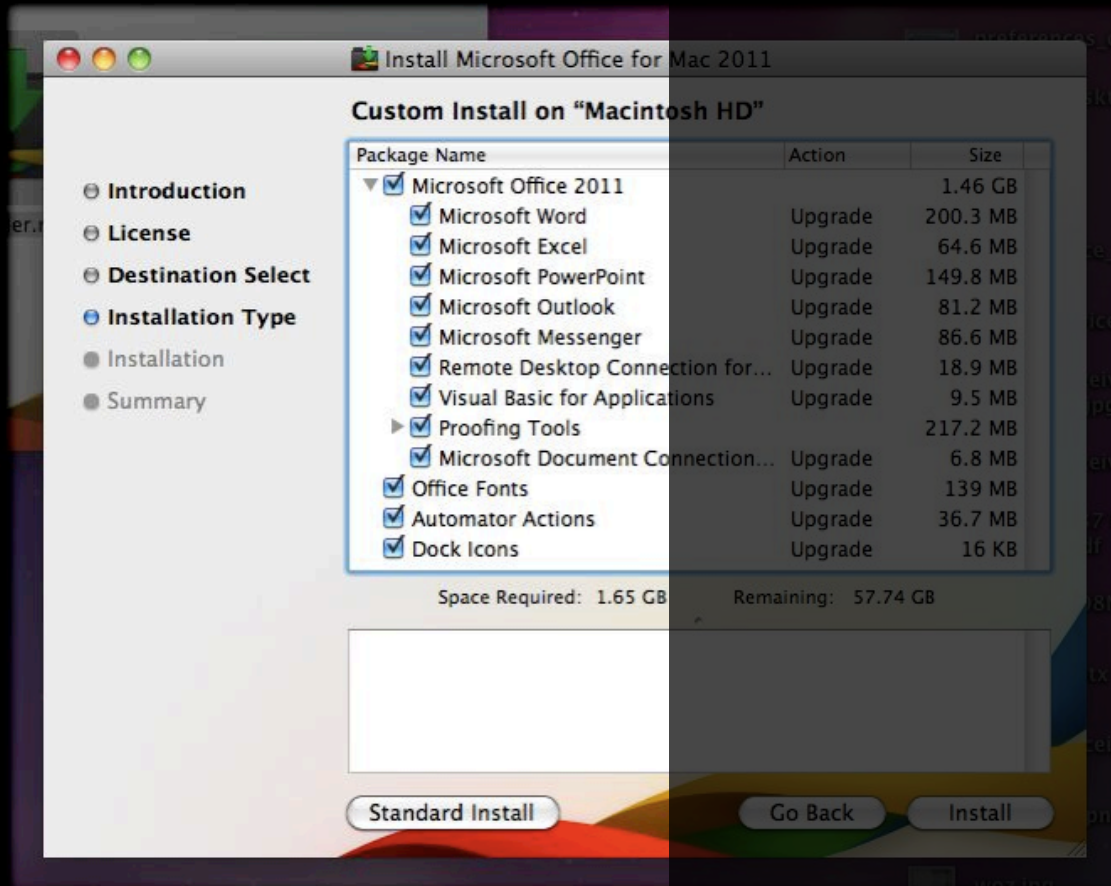
Stuff you want to click.

A list of individual packages that you want to install or not install during a custom installation of Office 2011.

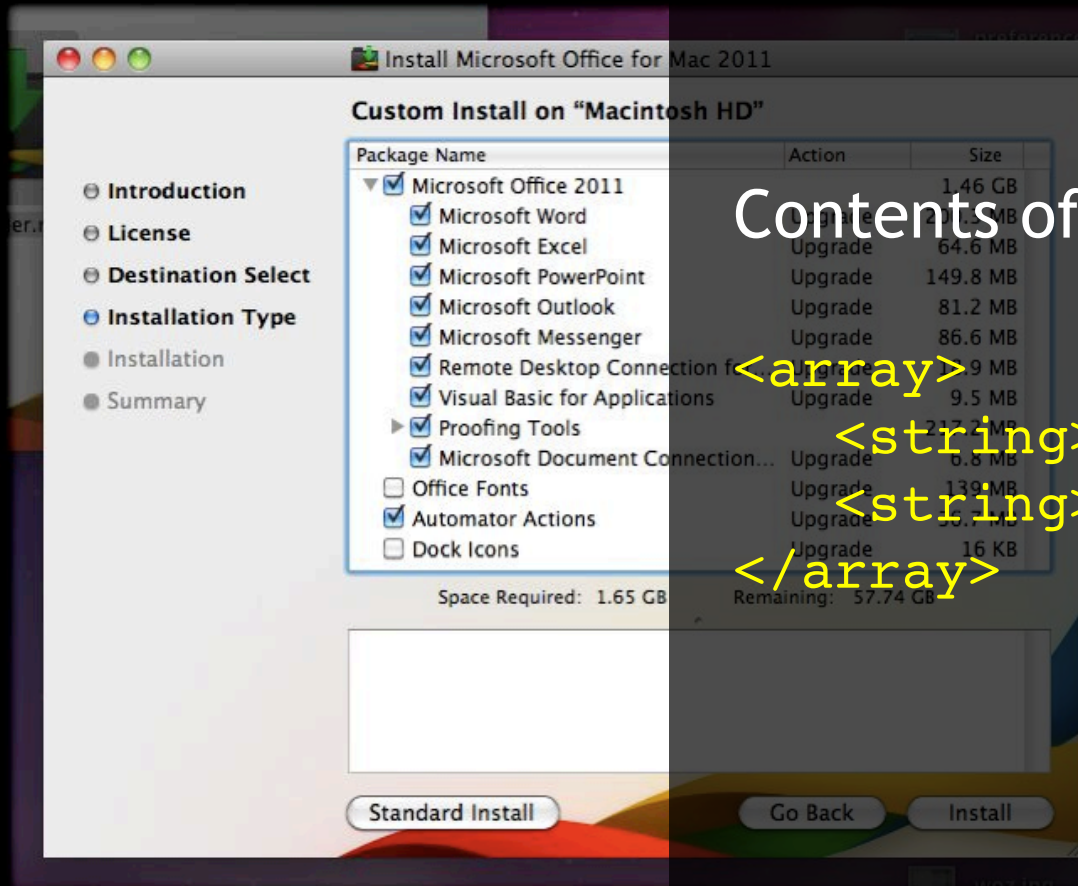
Deployment and Removal: Scripted



Deployment and Removal: Scripted



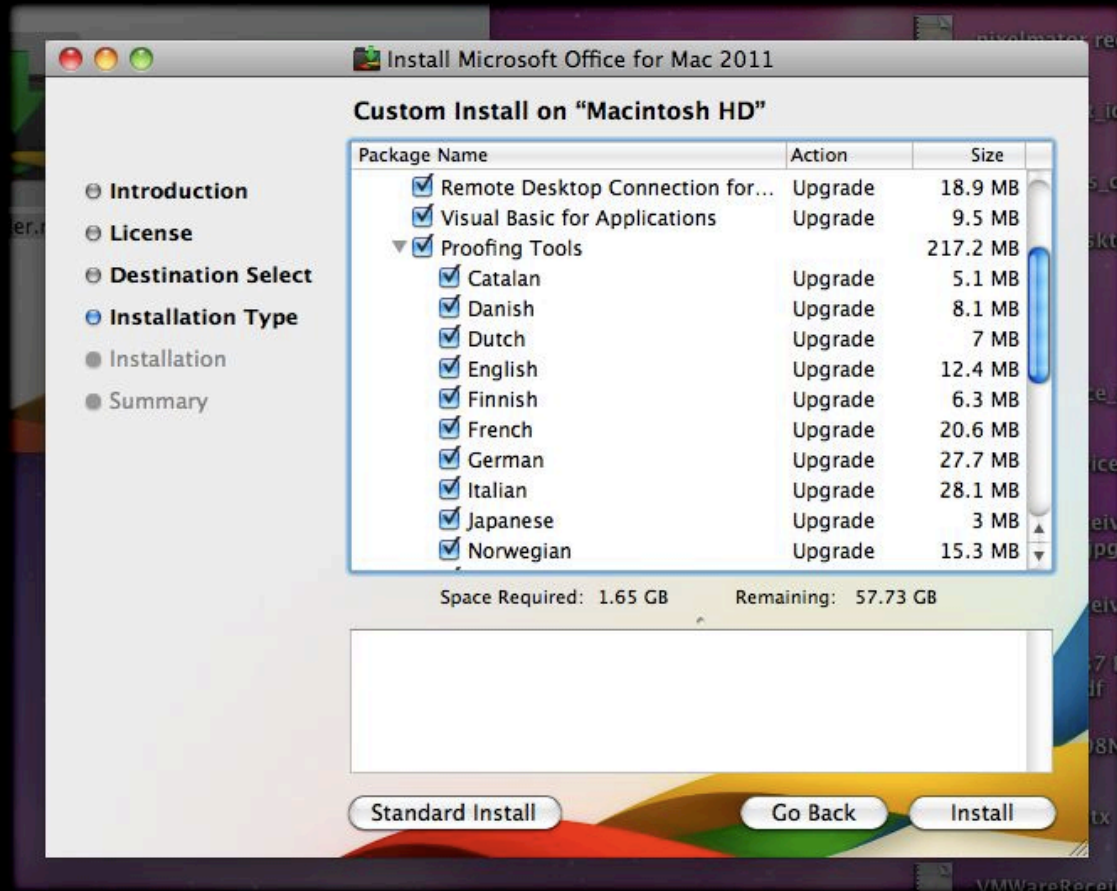
Deployment and Removal: Scripted



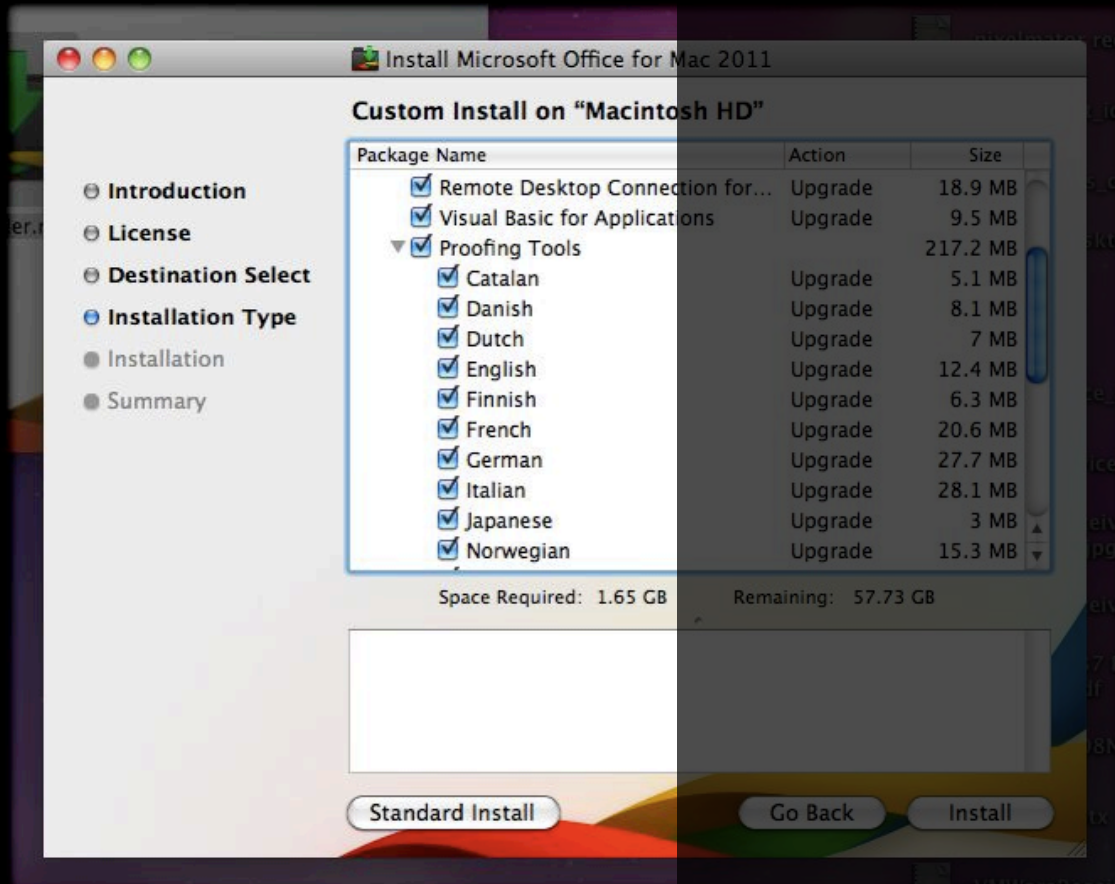
Contents of the Choices file

```
<array>  
<string>fonts</string>  
<string>dock</string>  
</array>
```

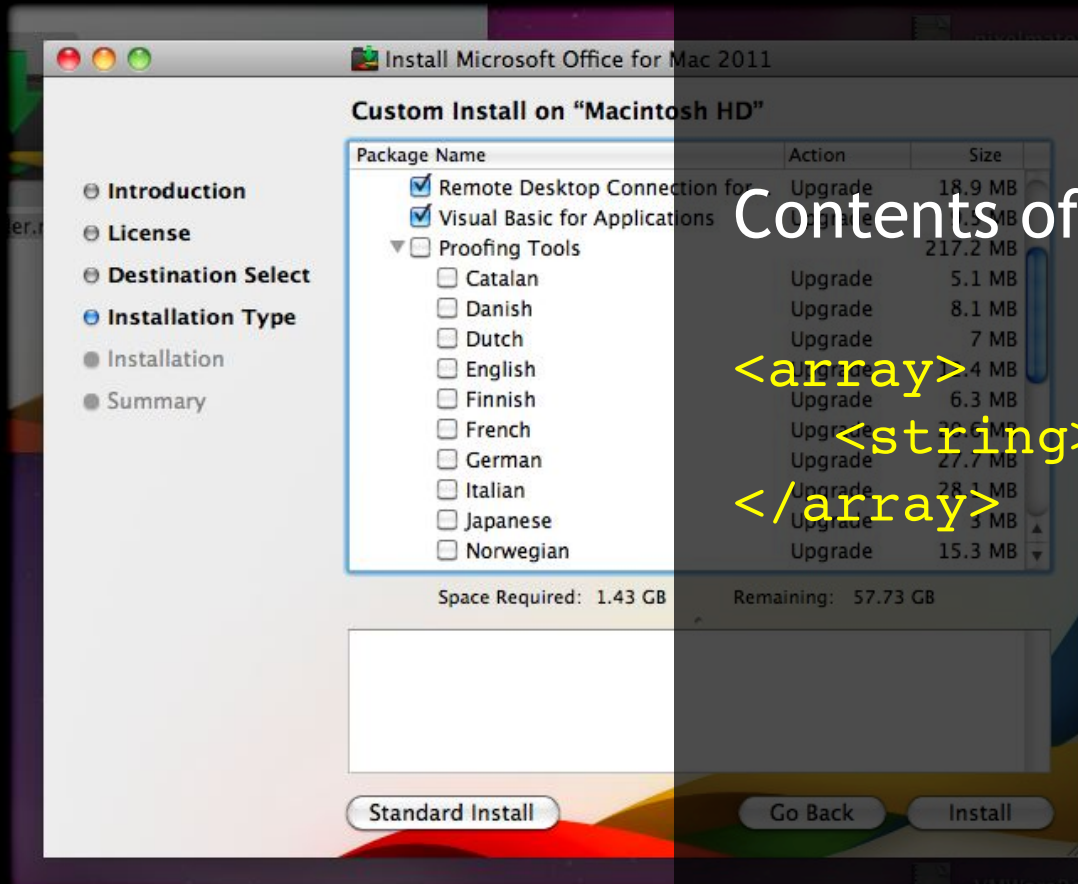
Deployment and Removal: Scripted



Deployment and Removal: Scripted



Deployment and Removal: Scripted



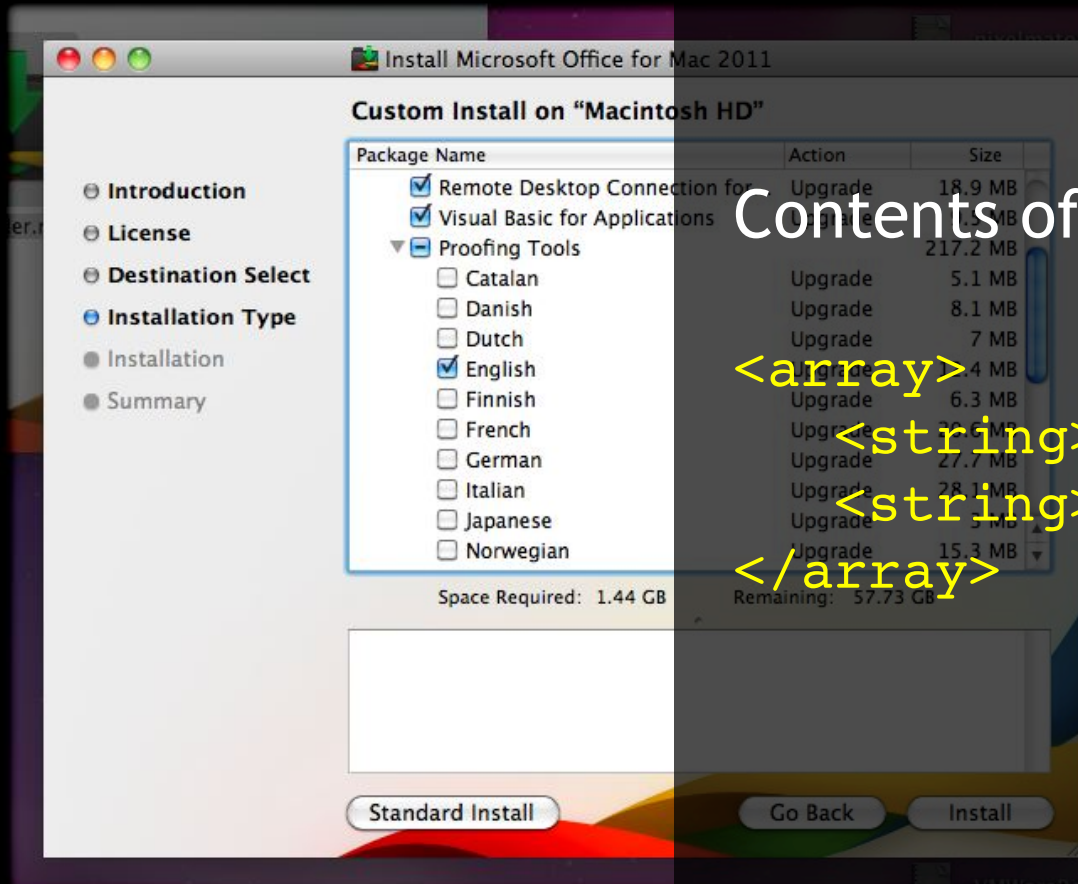
Contents of the Choices file

<array>

<string>proofing-tools</string>

</array>

Deployment and Removal: Scripted



Contents of the Choices file

```
<array>
```

```
<string>proofing-tools</string>
```

```
<string>english</string>
```

```
</array>
```

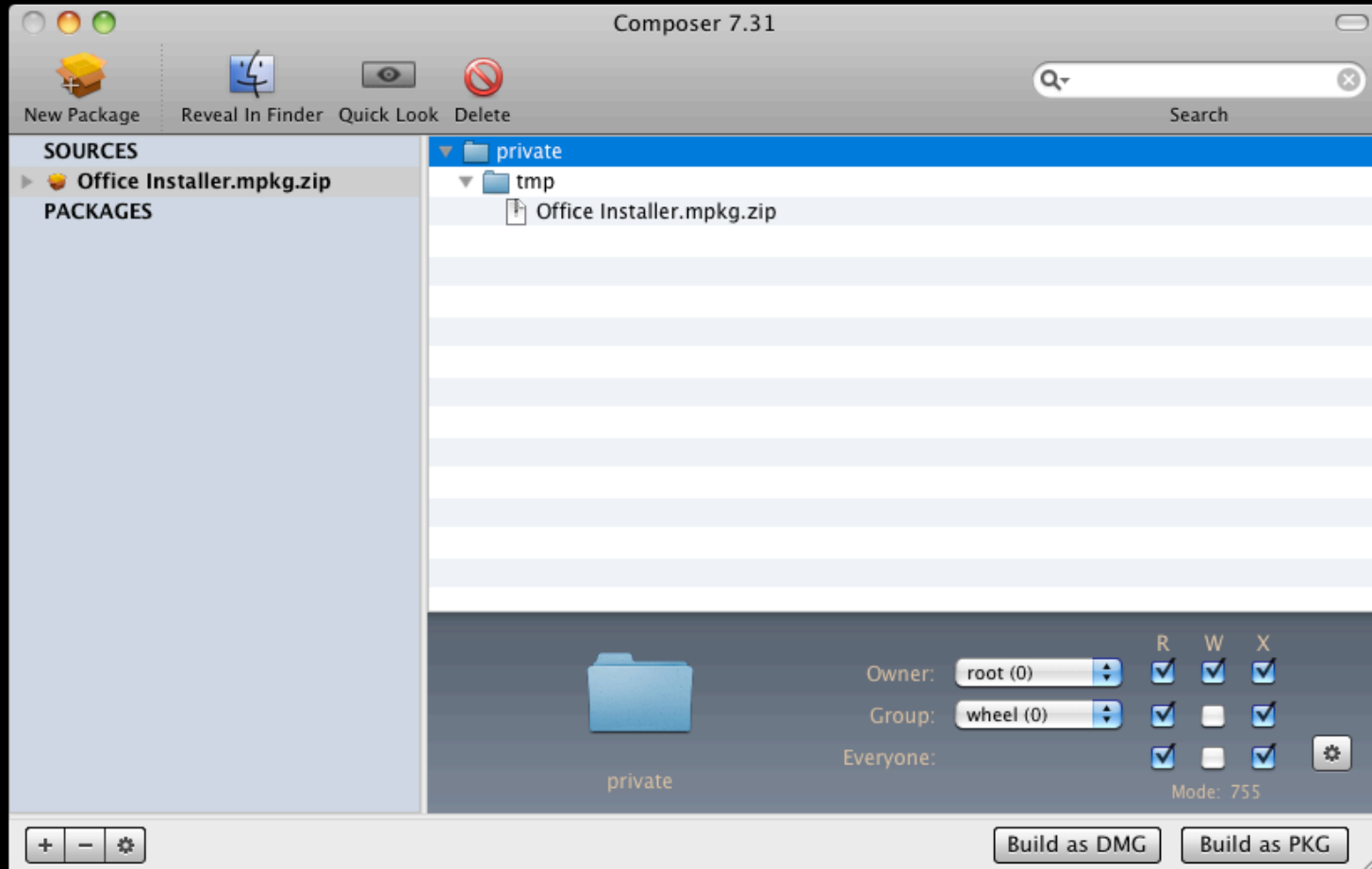
Deployment and Removal: Scripted

Readying for Deployment

1. Create a new package
2. Compress (.zip) the Office Installer.mpkg file
3. Install the Office Installer.mpkg.zip file into /private/tmp
4. Build as DMG

This one Office 2011 package gets deployed to everyone.

Deployment and Removal: Scripted



Deployment and Removal: Scripted

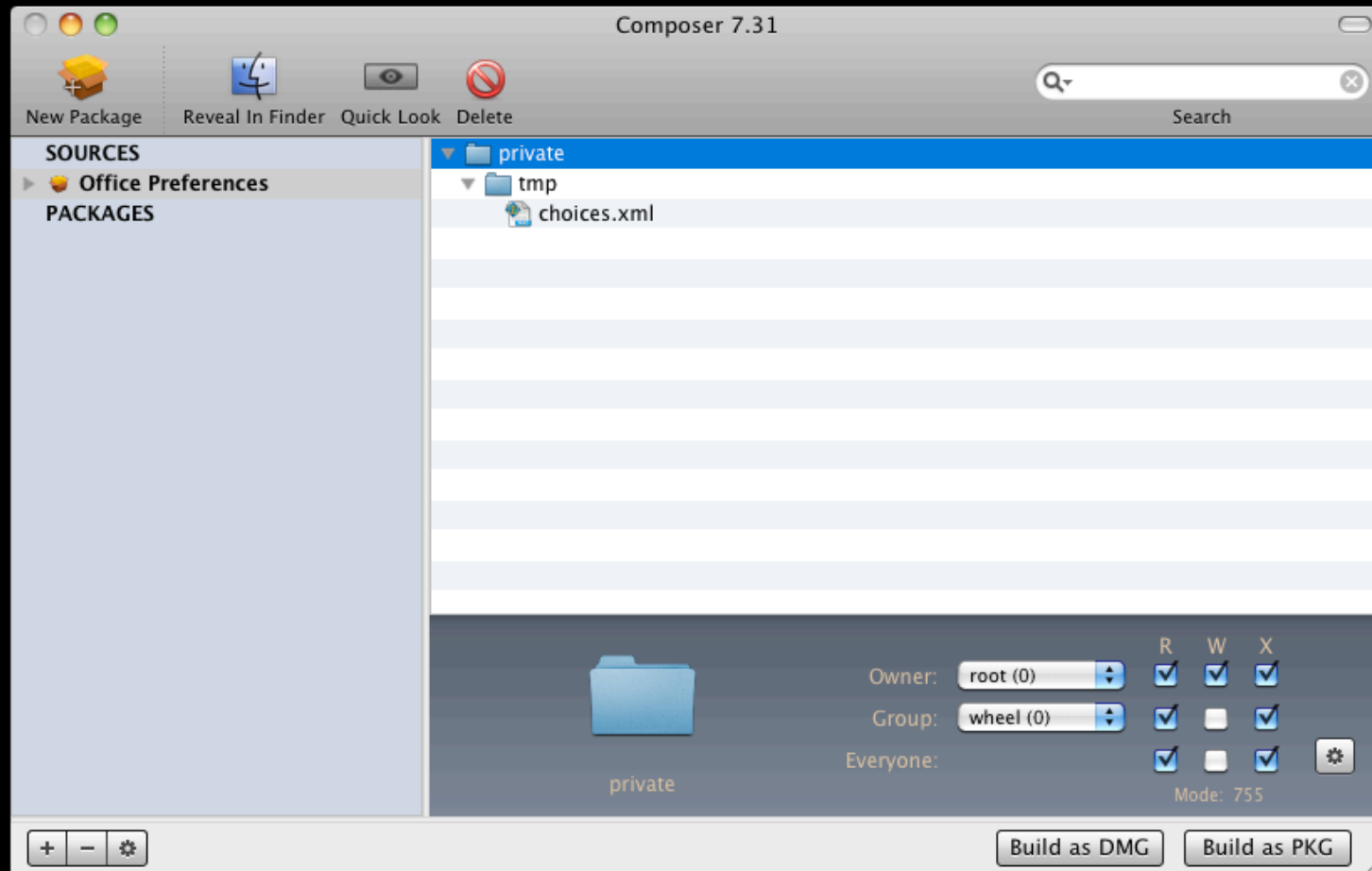
Readying for Deployment

3. Create a second new package
4. Install the choices.xml file into /private/tmp
5. Add a postflight script that runs:

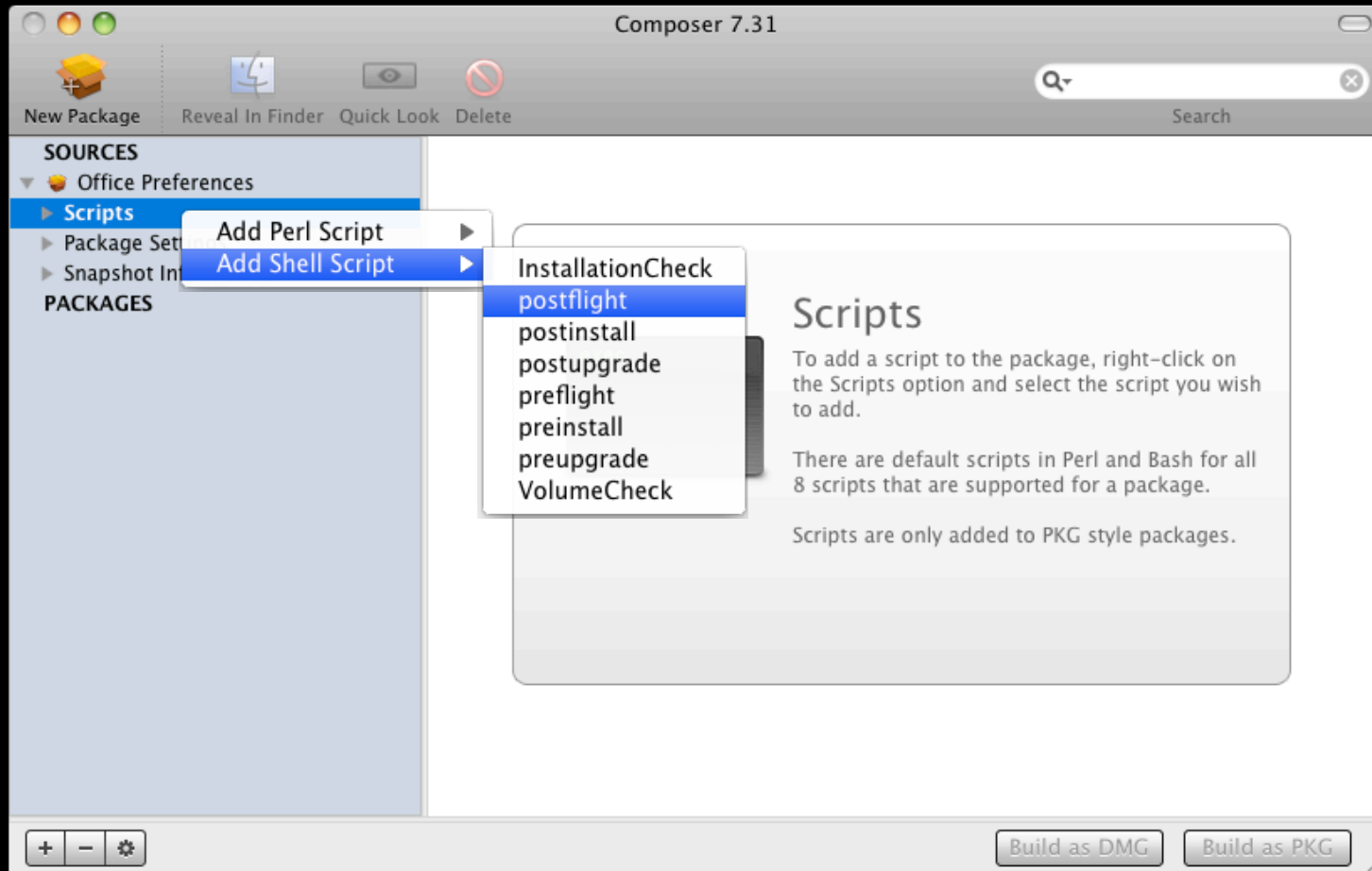
```
installer -pkg /private/tmp/Office Installer.mpkg  
-target /  
-applyChoiceChangesXML /private/tmp/choices.xml
```

6. Optionally, add other preferences and files such as Outlook template for Exchange and document templates

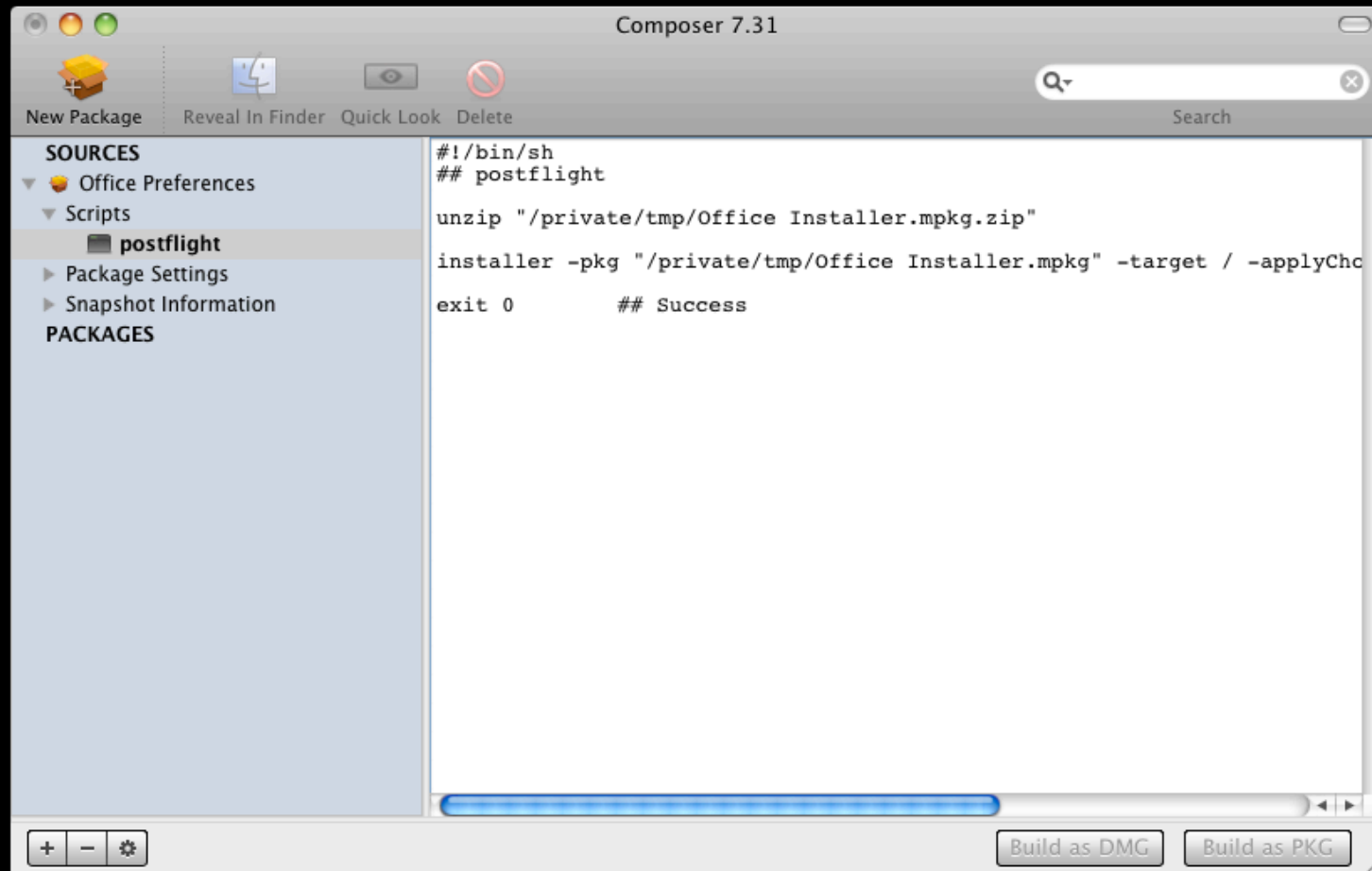
Deployment and Removal: Scripted



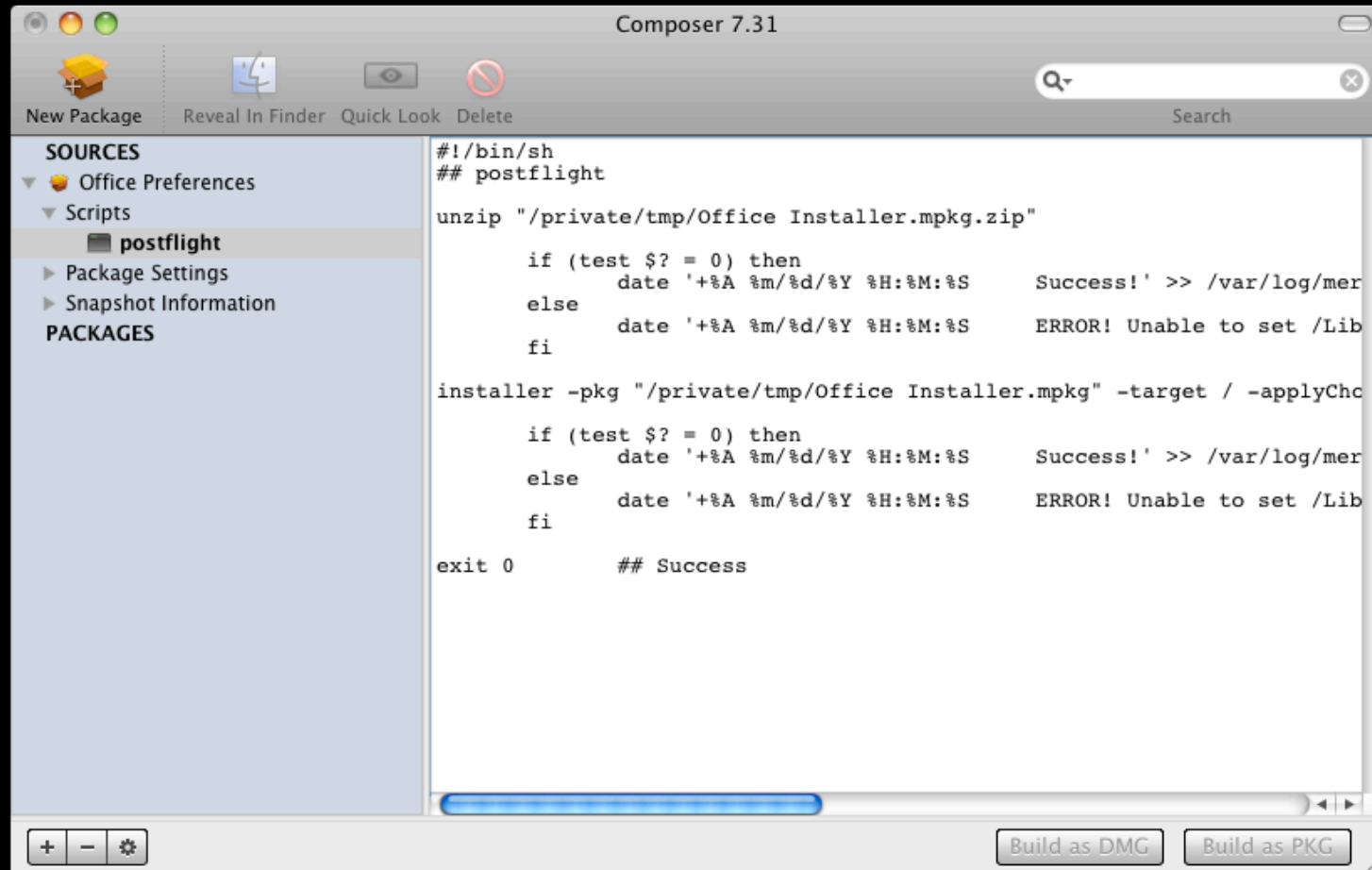
Deployment and Removal: Scripted



Deployment and Removal: Scripted



Deployment and Removal: Scripted



Deployment and Removal: Scripted

Demo

Use InstallEase to create
an Office removal package

- Administrator's toolbox
- Deployment and Removal
- Configuration
- Management

Configuration

Simple  Complex

Configuration

Simple  Complex

None

Compiled

Scripted

Pros

- Zero preparation
-

Cons

- Time consuming to support
-

Ideal

- A small workgroup

Configuration

Simple  Complex

None

Compiled

Scripted

Pros

- Zero preparation
- Moderately customizable
- Gives users a prepared environment

Cons

- Time consuming to support
- Requires upfront preparation by technical support staff

Ideal

- A small workgroup
- Diverse workgroups

Configuration

Simple  Complex

	None	Compiled	Scripted
Pros	<ul style="list-style-type: none">• Zero preparation	<ul style="list-style-type: none">• Moderately customizable• Gives users a prepared environment	<ul style="list-style-type: none">• Highly customizable• Builds on compiled configurations
Cons	<ul style="list-style-type: none">• Time consuming to support	<ul style="list-style-type: none">• Requires upfront preparation by technical support staff	<ul style="list-style-type: none">• Requires upfront preparation by technical support staff• Requires scripting knowledge
Ideal	<ul style="list-style-type: none">• A small workgroup	<ul style="list-style-type: none">• Diverse workgroups	<ul style="list-style-type: none">• Diverse workgroups• Limited support staff

Configuration: Compiled

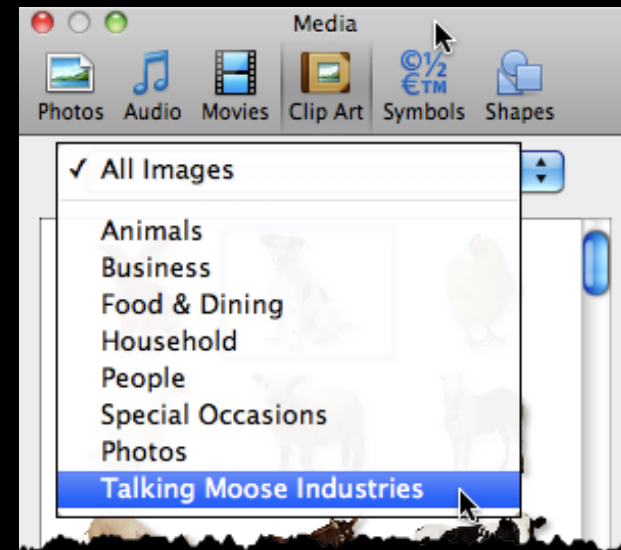
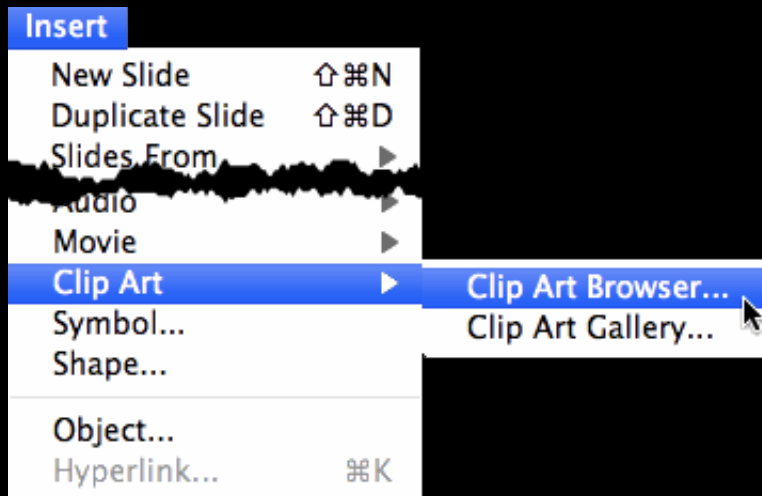
What can you deploy in a compiled configuration?

- Company logos
- Letterhead and forms
- Company Office themes
- Company Word styles
- AppleScript menu items and macros
- autoConfigDB.xml file for POP and IMAP setups

Configuration: Compiled

Company Logos (.eps, .jpg, .gif, etc.)

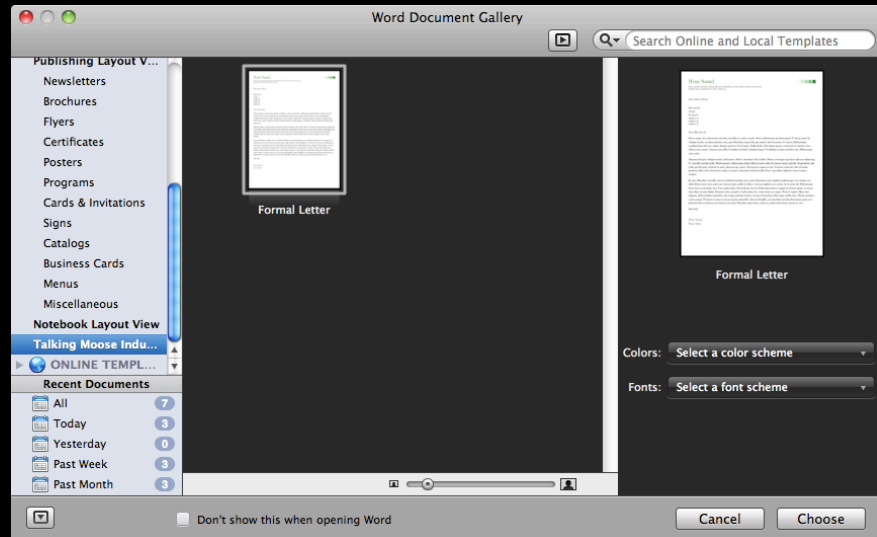
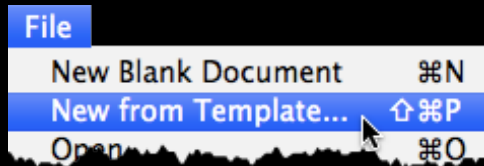
`/Applications/Microsoft Office 2011/Office/
Media/Clipart/Talking Moose Industries`



Configuration: Compiled

Letterhead and forms (.dotx, .potx, .xltx)

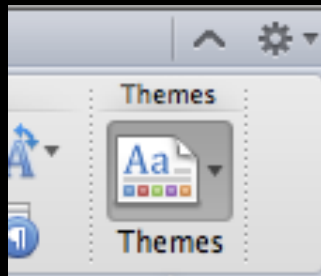
/Applications/Microsoft Office 2011/Office/
Media/Templates/Talking Moose Industries



Configuration: Compiled

Company Office themes (.thmx)

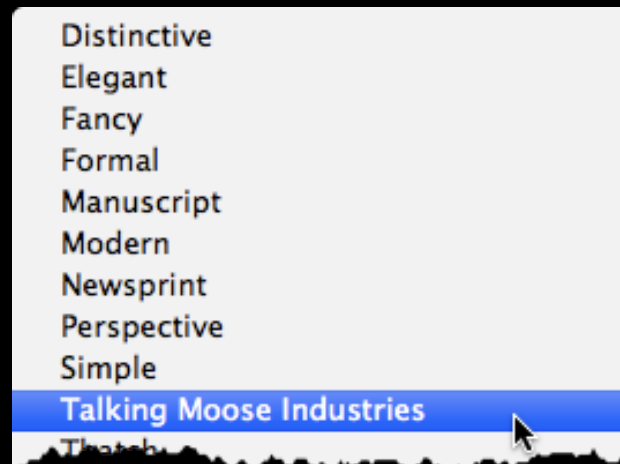
`/Applications/Microsoft Office 2011/Office/
Media/Office Themes/Talking Moose Industries`



Configuration: Compiled

Company Word styles (.dotx)

`/Applications/Microsoft Office 2011/Office/
Media/QuickStyles/Talking Moose Industries.dotx`



Configuration: Compiled

AppleScript menu items...

```
/Applications/Microsoft Office 2011/Office/  
Office First Run/MUD/
```

```
Excel Script Menu Items  
Outlook Script Menu Items  
PowerPoint Script Menu Items  
Word Script Menu Items
```

Configuration: Compiled

AppleScript menu items... and macros

```
/Applications/Microsoft Office 2011/Office/  
Startup/
```

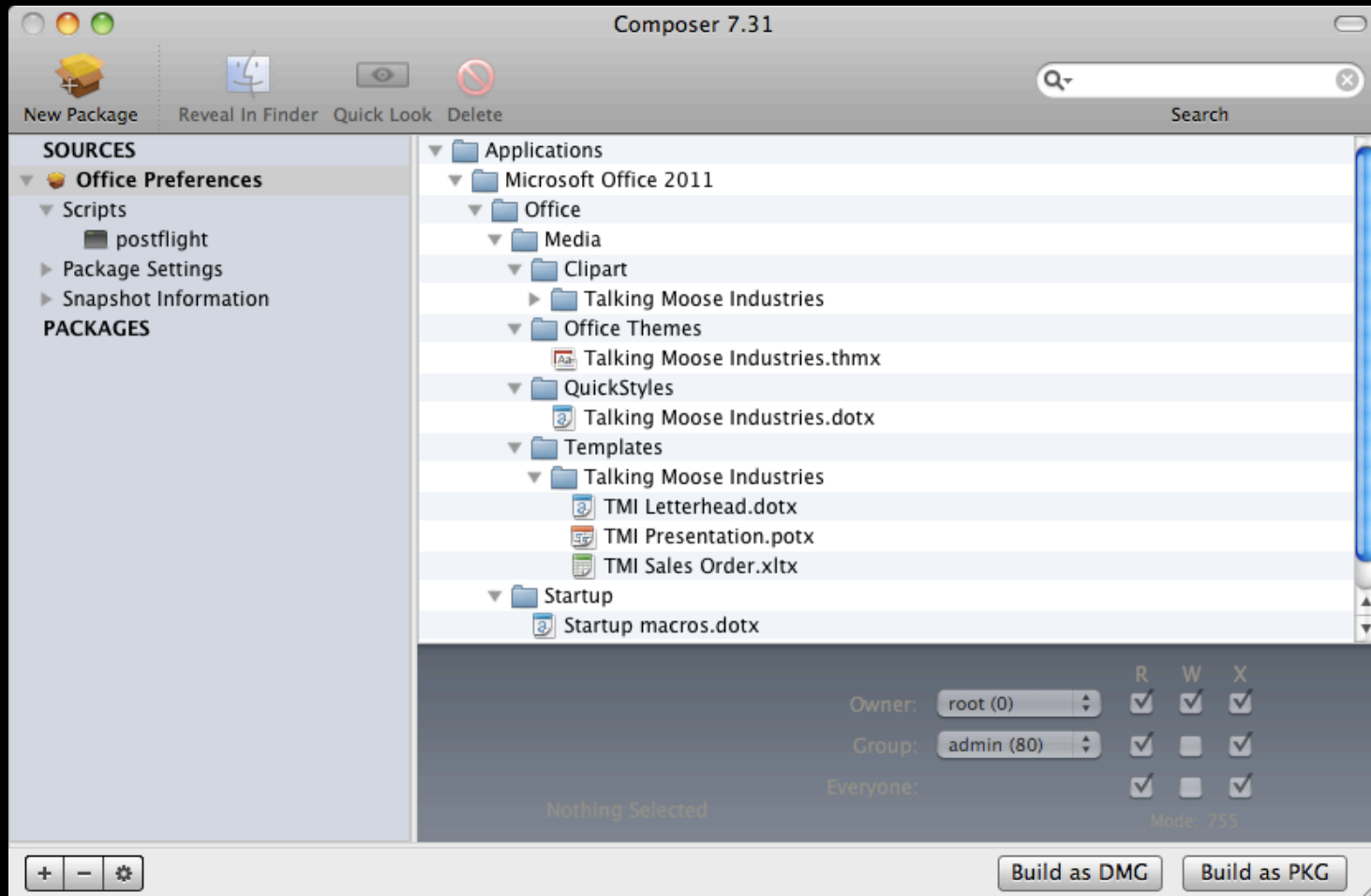
```
Excel
```

```
PowerPoint
```

```
Word
```

Copy a Normal template file with the macros here and rename it, such as Startup.dot.

Configuration: Compiled



Configuration: Compiled

autoConfigDB.xml file for POP and IMAP setups

`/Applications/Microsoft Office 2011/Microsoft Outlook.app/Contents/Resources/autoConfigDB.xml`

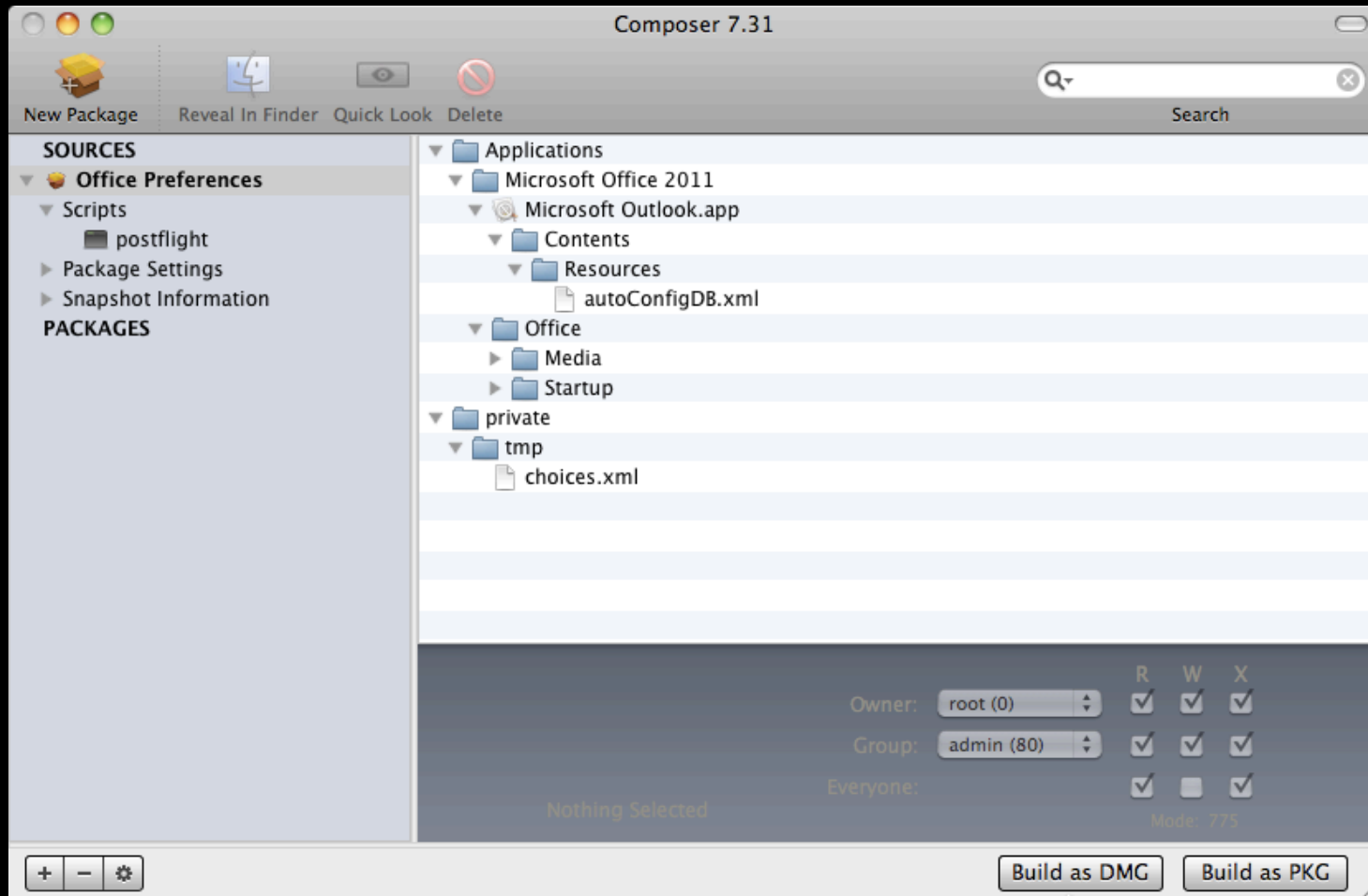
- Domain
- Account type
- Server address
- Authentication method
- SSL and Port numbers
- IMAP IDLE

Configuration: Compiled

autoConfigDB.xml file for POP and IMAP setups

```
<config>
  <EmailDomain>talkingmoose.pvt</EmailDomain>
  <OutgoingType>SMTP</OutgoingType>
  <OutgoingServer>mail.talkingmoose.pvt</OutgoingServer>
  <AuthRequired>>true</AuthRequired>
  <IncomingType>IMAP</IncomingType>
  <IncomingServer>mail.talkingmoose.pvt</IncomingServer>
  <ServiceName>Talking Moose Industries</ServiceName>
</config>
```

Configuration: Compiled



Configuration: Scripted

What can you deploy in a scripted configuration?

- Everything from the compiled configuration package
- Default Microsoft User Data folder
- Outlook Exchange Setup script
- Root certificates

Configuration: Scripted

Default Microsoft User Data folder

```
/Applications/Microsoft Office 2011/Office/  
Office First Run/MUD/Microsoft User Data
```

Contents of the MUD folder will be copied to

```
~/Documents
```

if this file is absent

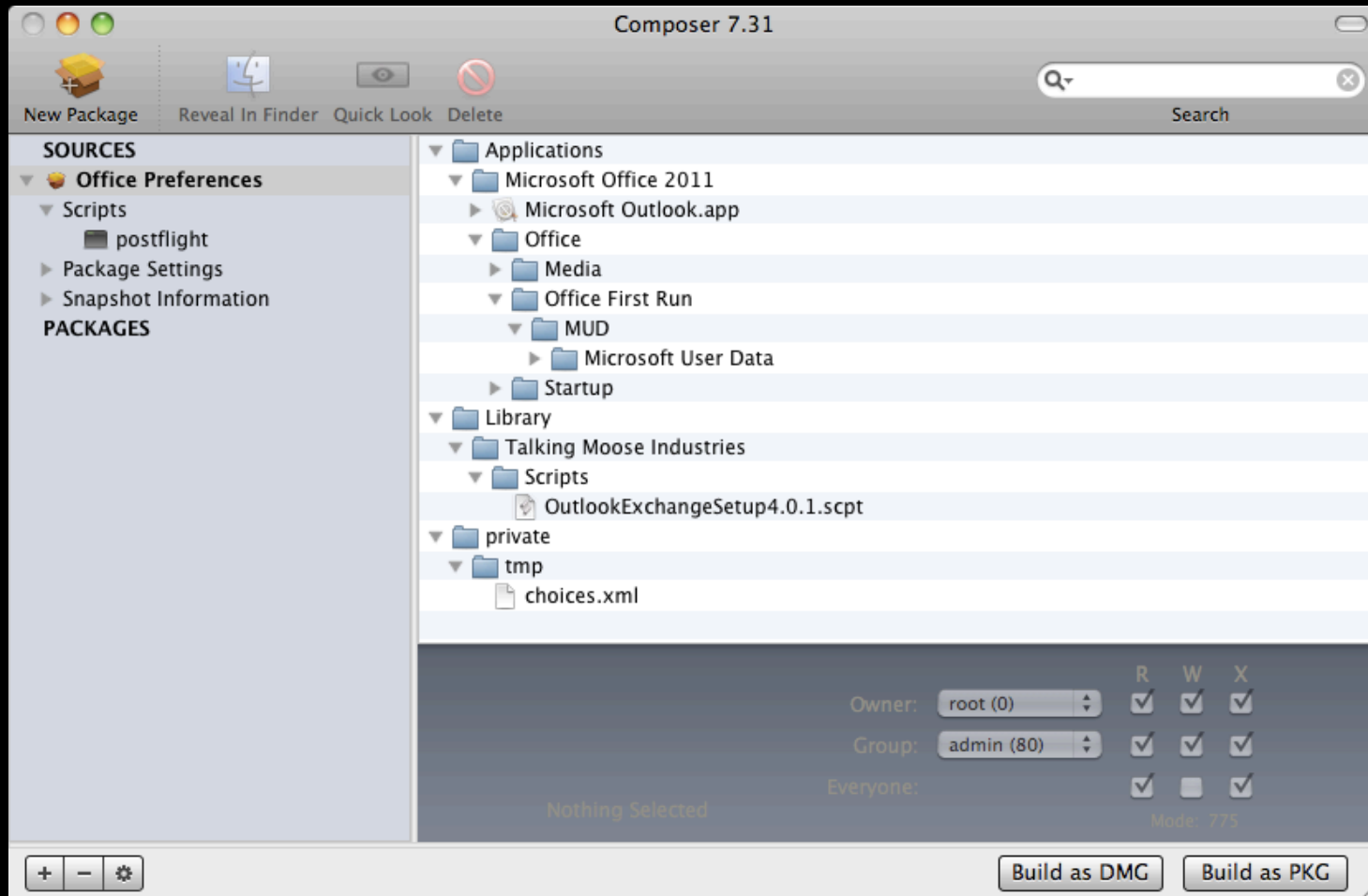
```
~/Library/Preferences/com.microsoft.office.plist
```


Configuration: Scripted

Outlook Exchange Setup script

- Requires a pre-configured Microsoft User Data folder identity in ~/Documents, which can be copied automatically from `/Applications/Microsoft Office 2011/Office/Office First Run/MUD`
- Automatically configures a user's Microsoft Outlook settings for Exchange Server at first launch
- <http://www.officeformachelp.com/outlook/exchange/setup-script/>

Configuration: Scripted



Configuration: Scripted

Root certificates

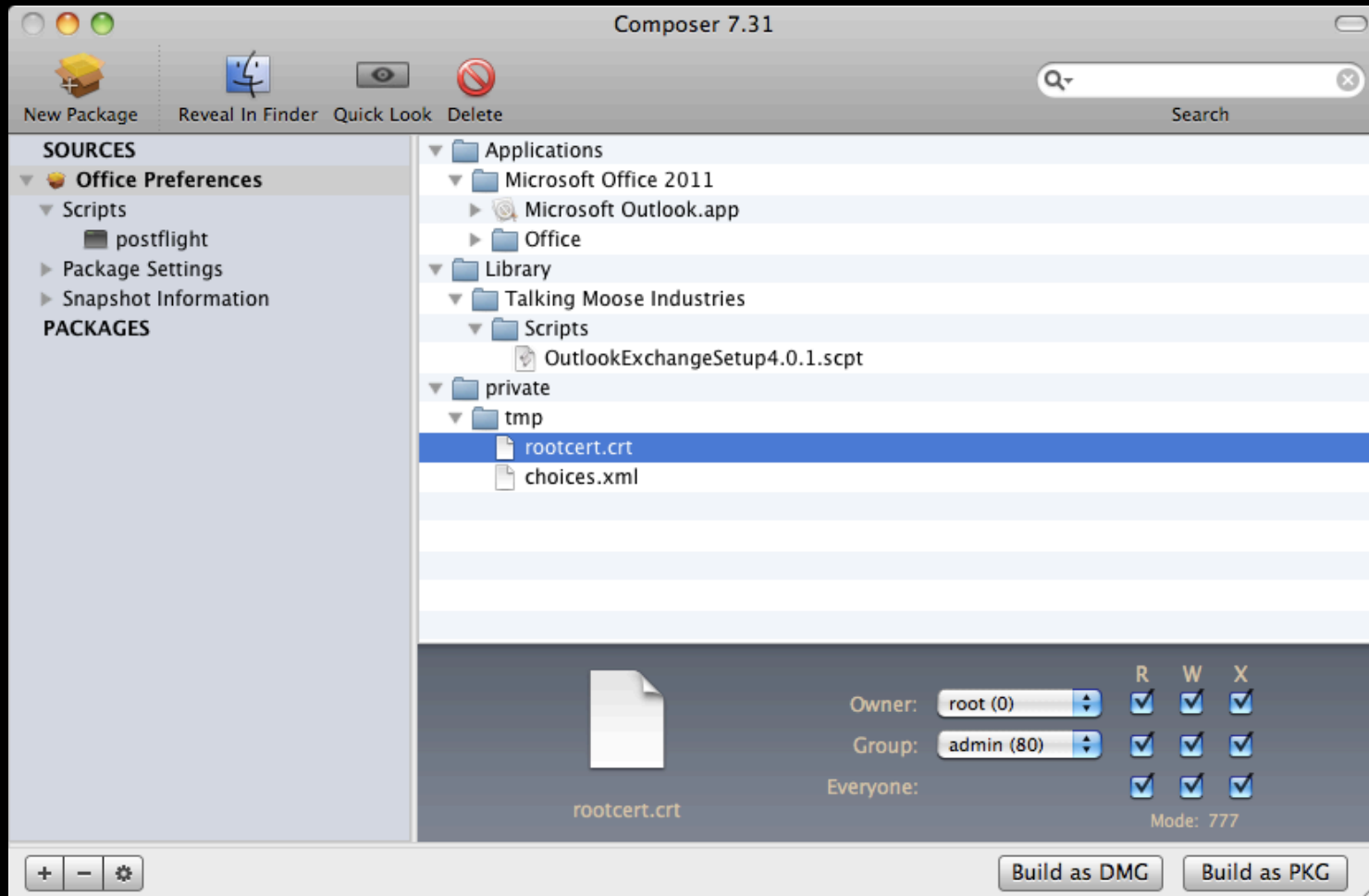
Primarily used for self-signed certificates for internal servers such as Exchange or SharePoint.

Two parts:

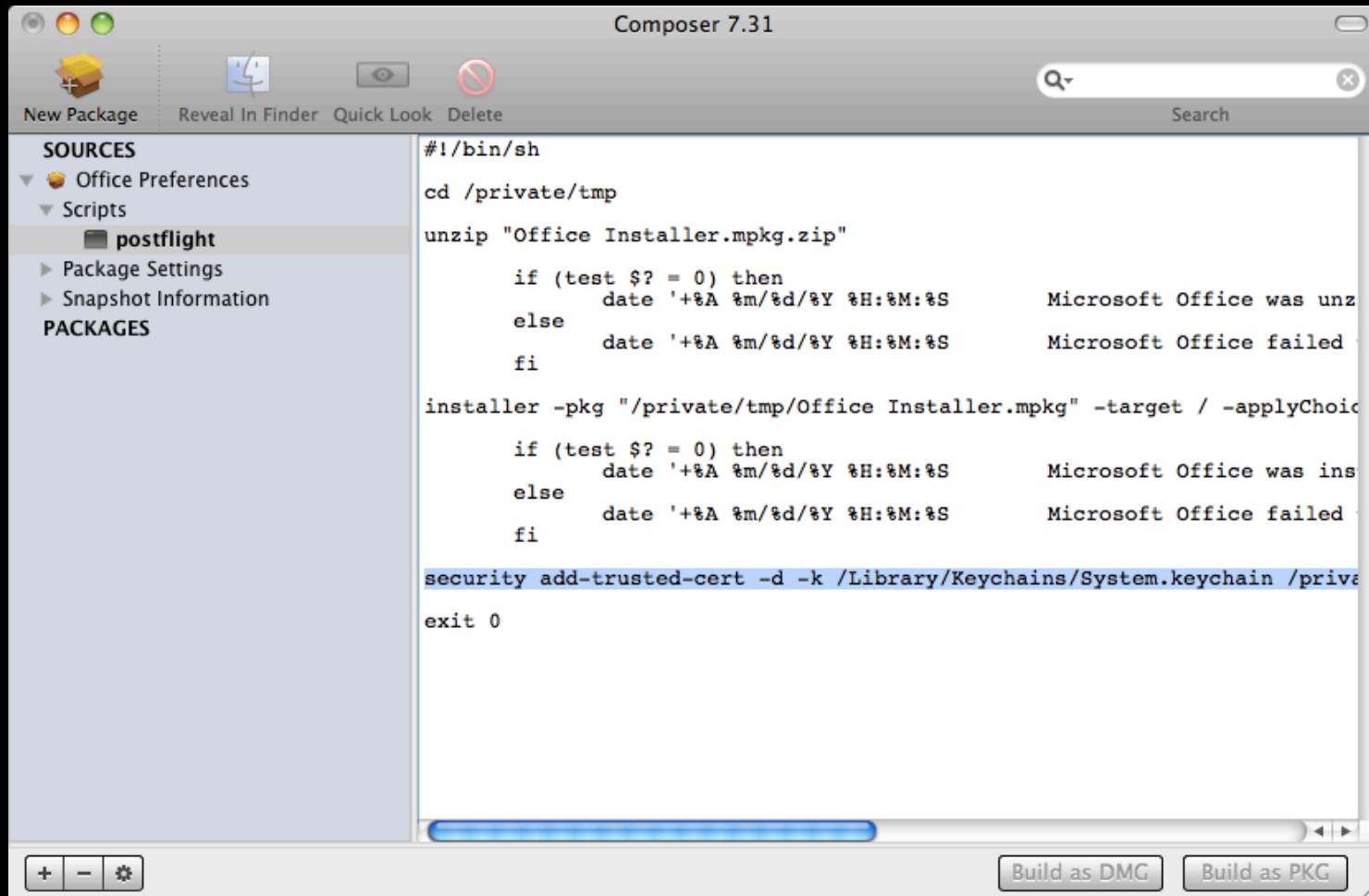
- Certificate file copied to `/private/tmp`
- `security` command line tool

```
security add-trusted-cert -d  
-k /Library/Keychains/System.keychain  
/private/tmp/rootcert.crt
```

Configuration: Scripted



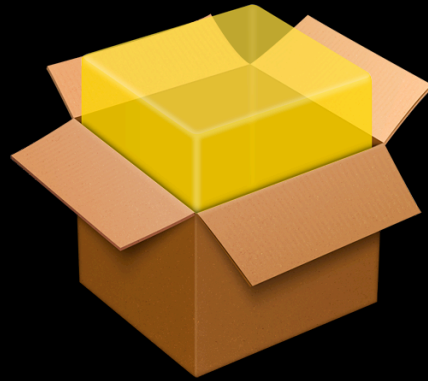
Configuration: Scripted



Configuration: Scripted

Done!

Compile as an Apple Installer package (.pkg).



Office Preferences.pkg

- Administrator's toolbox
- Deployment and Removal
- Configuration
- Management

Management

Management

Simple  Complex

Management

Simple  Complex

Unmanaged

Pros

- Zero preparation
-

Cons

- User will see unwanted dialogs (Registration, Updates, etc.)
 - Time consuming to support
-

Ideal

- A small workgroup

Management

Simple  Complex

Unmanaged

Deploy .plist files

Pros

- Zero preparation
- Everyone gets a default set of preferences

Cons

- User will see unwanted dialogs (Registration, Updates, etc.)
- Time consuming to support
- Uncontrollable

Ideal

- A small workgroup
- Any organization where inconsistent preferences are OK

Management

Simple  Complex

	Unmanaged	Deploy .plist files	MCX
Pros	<ul style="list-style-type: none">• Zero preparation	<ul style="list-style-type: none">• Everyone gets a default set of preferences	<ul style="list-style-type: none">• Maintains consistency across machines
Cons	<ul style="list-style-type: none">• User will see unwanted dialogs (Registration, Updates, etc.)• Time consuming to support	<ul style="list-style-type: none">• Uncontrollable	<ul style="list-style-type: none">• Requires familiarity with MCX and .plist files• Can be tricky
Ideal	<ul style="list-style-type: none">• A small workgroup	<ul style="list-style-type: none">• Any organization where inconsistent preferences are OK	<ul style="list-style-type: none">• Any organization that wants consistent preferences across machines all the time

Management: Unmanaged

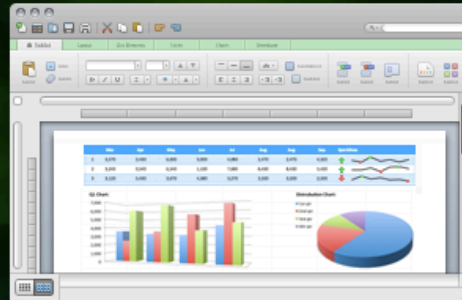
Not completely without management options

Use `defaults` or `plistbuddy` via Apple Remote Desktop's Send UNIX command

Example: `com.microsoft.Excel.plist`

```
<key>14\Microsoft Excel\Hide Welcome Window</key>  
<integer>0</integer>
```

Welcome to Excel 2011



What's new in Microsoft Excel:mac²⁰¹¹



Access your files anywhere

Post, access, edit, and share your files from virtually anywhere.



Display data visually with Conditional Formatting

Clarify your data with icons, data bars, and color scales.



Manage your data

Organize, filter, and format related data with Excel tables.



Summarize your data

Spend less time sifting through data, and more time analyzing with PivotTables.



Spot trends with Sparklines

Create small charts in a single cell to discover patterns in your data.



Automate with Visual Basic

Increase efficiency and save time by automating repetitive tasks.

Explore Excel

Close

OfficeforMacHelp.com

Your unofficial source for help

Management: Unmanaged

defaults

```
defaults write com.microsoft.Excel  
"14\Microsoft Excel\Hide Welcome Window" -int 1
```

The integer `1` means “true” or “yes”.

Note the omission of `.plist` from the file name.

Refer to `man defaults` in the Terminal application.

Management: Unmanaged

plistbuddy

```
plistbuddy -c 'set ":14\\\Microsoft Excel  
\\\Hide Welcome Window" 0' ~/Library  
/Preferences/com.microsoft.Excel.plist
```

The integer `0` means “false” or “no”.

Refer to `plistbuddy -help` in the Terminal application.

Management: Deploy .plist files

Add to your preferences package!

Launch every Office 2011 application and set preferences, windows, toolbars, etc.

Locate preference files:

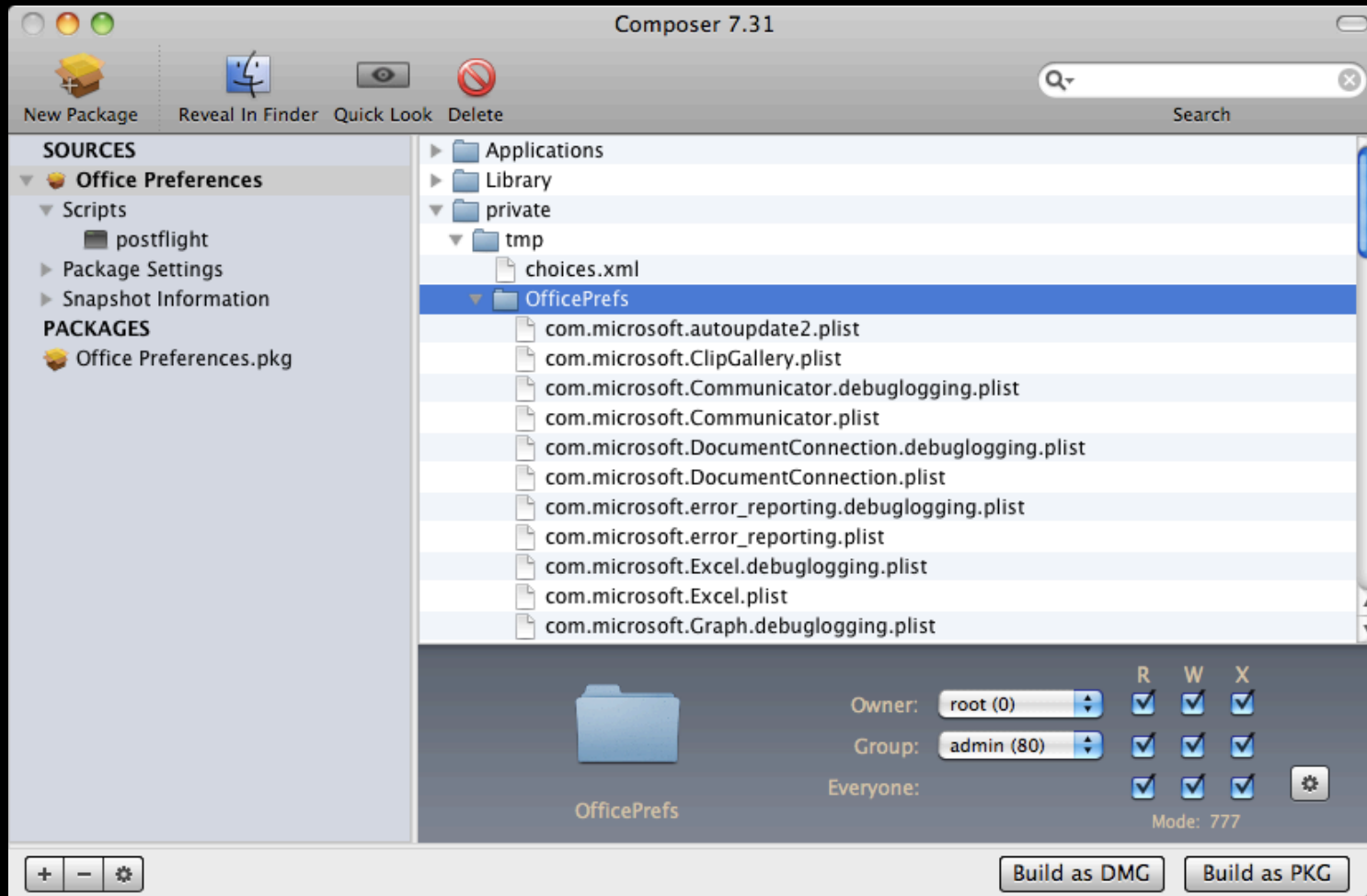
```
~/Library/Preferences/com.microsoft.*.plist  
~/Library/Preferences/Microsoft
```

Management: Deploy .plist files

Add to your preferences package!

Add to `/private/tmp` in Office Preferences package

Management: Deploy .plist files



Management: Deploy .plist files

Add to your preferences package!

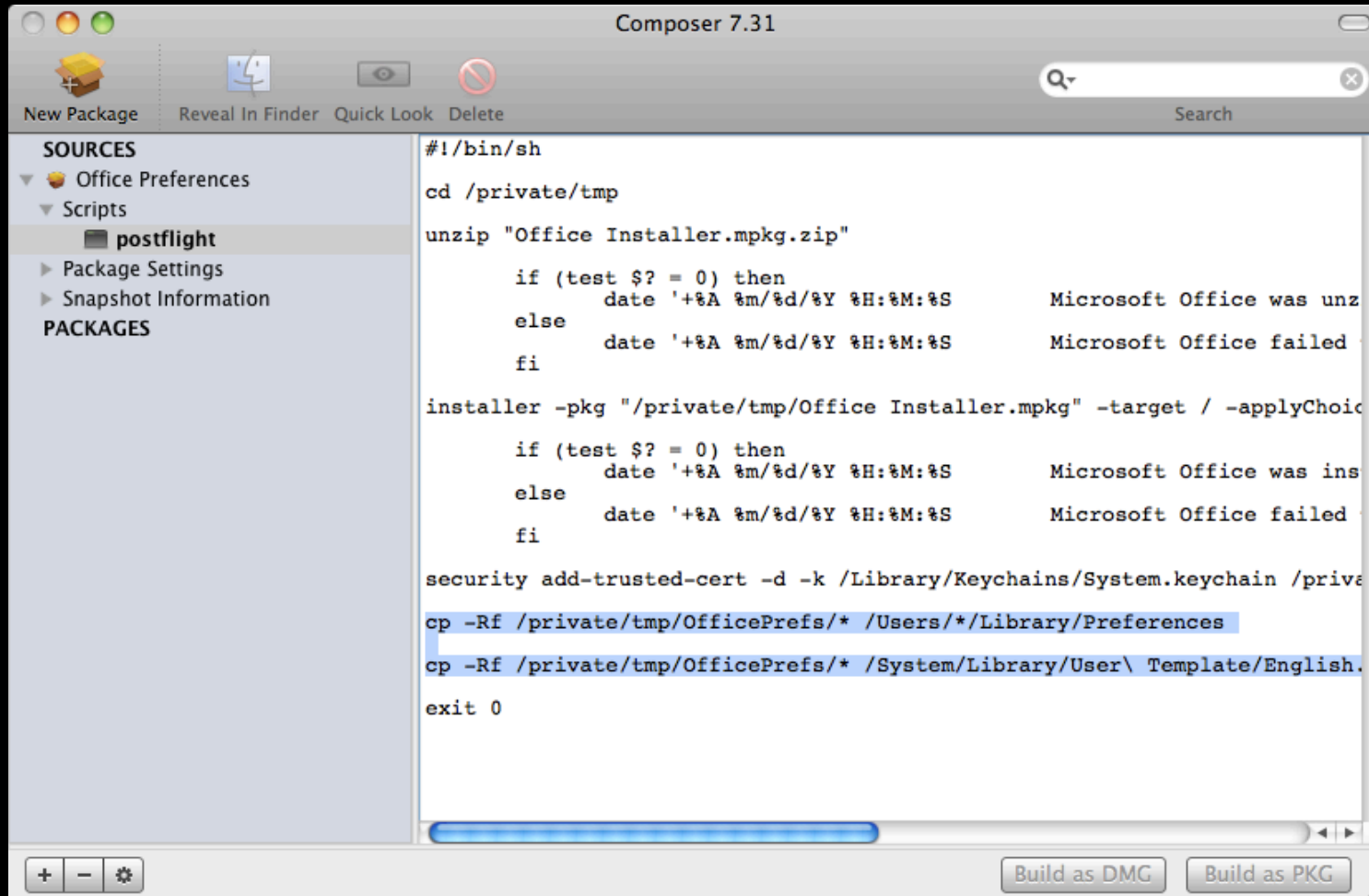
Add line to postflight script to copy files to all existing users:

```
cp -Rf /private/tmp/OfficePrefs/* /Users/*/Library/Preferences
```

Add a second line to copy files to the User Template folder for future users:

```
cp -Rf /private/tmp/OfficePrefs/* /System/Library/User\ Template/English.lproj/Library/Preferences
```

Management: Deploy .plist files



The screenshot shows the Composer 7.31 application window. The left sidebar is titled 'SOURCES' and contains a tree view with 'Office Preferences' expanded to show 'Scripts' and 'postflight'. Below this are 'Package Settings' and 'Snapshot Information'. Underneath is the 'PACKAGES' section. The main area displays a shell script for a postflight action. The script includes commands for unzipping an installer, running it, and copying preference files to user and system locations. At the bottom right, there are buttons for 'Build as DMG' and 'Build as PKG'.

```
#!/bin/sh
cd /private/tmp
unzip "Office Installer.mpkg.zip"
if (test $? = 0) then
    date '+%A %m/%d/%Y %H:%M:%S'      Microsoft Office was unz
else
    date '+%A %m/%d/%Y %H:%M:%S'      Microsoft Office failed
fi
installer -pkg "/private/tmp/Office Installer.mpkg" -target / -applyChoic
if (test $? = 0) then
    date '+%A %m/%d/%Y %H:%M:%S'      Microsoft Office was ins
else
    date '+%A %m/%d/%Y %H:%M:%S'      Microsoft Office failed
fi
security add-trusted-cert -d -k /Library/Keychains/System.keychain /priv
cp -Rf /private/tmp/OfficePrefs/* /Users/*/Library/Preferences
cp -Rf /private/tmp/OfficePrefs/* /System/Library/User\ Template/English.
exit 0
```

Management: MCX

MCX Management systems

- Open Directory (part of Mac OS X server)
- Active Directory (Windows, modified schema)
- Casper (JAMF Software)
- Local MCX (<http://managingosx.wordpress.com/2008/02/07/mcx-dslocal-and-leopard/>)

Management: MCX

Demo

Use Workgroup Manager
to explore and configure MCX settings

Management: MCX

What else can you manage in Office?

- Auto format hyperlinks
- Auto recovery settings
- AutoUpdate
- Background spell-checking
- Composing E-mail in plain text or HTML
- Customer Experience Improvement Program
- Download pictures in E-mail
- First run windows
- Welcome dialogs

- ☑ Administrator's toolbox
- ☑ Deployment and Removal
- ☑ Configuration
- ☑ Management

Resources and information

Office for Mac 2011 Administrator's Guide

<http://mac2.microsoft.com/help/office/14/en-us/admin>

Communicator for Mac 2011 Deployment Guide

<http://www.microsoft.com/downloads/en/details.aspx?FamilyID=7c4f539deb3c-422a-9b35-022970fc9c34&displaylang=en>

Information Rights Management in Office for Mac 2011 Deployment Guide

<http://www.microsoft.com/downloads/en/details.aspx?FamilyID=598cb9d3-2fdc-45e4-89f6-d2685a47c34c&displaylang=en>

Resources and information

Property List Editor.app (Xcode)

PackageMaker (part of Apple Developer Tools or Apple Remote Desktop)

<http://developer.apple.com>

Workgroup Manager (part of Mac OS X Server Admin Tools)

<http://support.apple.com/kb/DL1071>

BBEdit and TextWrangler

<http://www.barbones.com>

Resources and information

Casper and Composer

<http://www.jamfsoftware.com>

Iceberg

<http://s.sudre.free.fr/Software/Iceberg.html>

InstallEase

<http://www.lanrev.com/nc/product/download-installease.html>

Munki

<http://code.google.com/p/munki/>

Resources and information

installer command line utility

Enter `man installer` in a Terminal.app window

defaults command line utility

Enter `man defaults` in a Terminal.app window

plistbuddy command line utility

Enter `plistbuddy -help` in a Terminal.app window

security command line utility

Enter `man security` in a Terminal.app window

Resources and information

OfficeforMacHelp.com

MCX settings

</office/administration/mcx/>

autoConfigDB.xml

</office/administration/deployment/autoconfigdb-xml/>

Outlook Exchange Setup 4.0

</outlook/exchange/setup-script/>

choices.xml

</office/administration/deployment/command-line/>

Resources and information

OfficeforMacHelp.com

Apple Remote Desktop

[/office/administration/deployment/apple-remote-desktop/](#)

Casper

[/office/administration/deployment/casper/](#)

distribution.dist

[/office/administration/deployment/distribution-dist/](#)

OfficeforMacHelp.com

Your unofficial source for help

William Smith

E-mail: bill@officeformachelp.com

Twitter: [@meck](https://twitter.com/meck)
