

Portable Homes

Now you can take it with you

Josh Wisenbaker

www.afp548.com

The Problem

- Mac OS X mobile homes are cool, but...
- What if a user has a mobile account and a network home?
- With Mac OS X 10.3 the data was separate on the workstation and the network
- It was up to you to sync them

The Solution

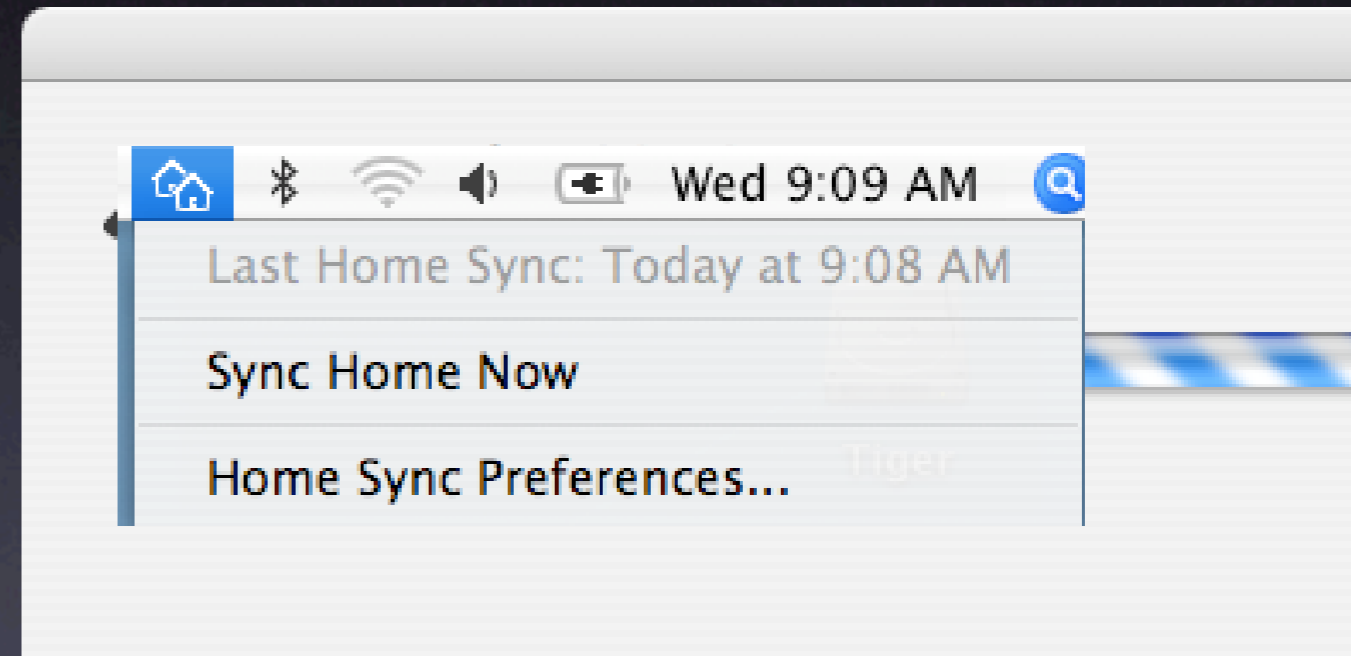
Portable Homes in Mac OS X 10.4

Portable Homes

- Any user that has a mobile account and a network home defined
- Typically for Mac users this includes Open Directory and Active Directory accounts

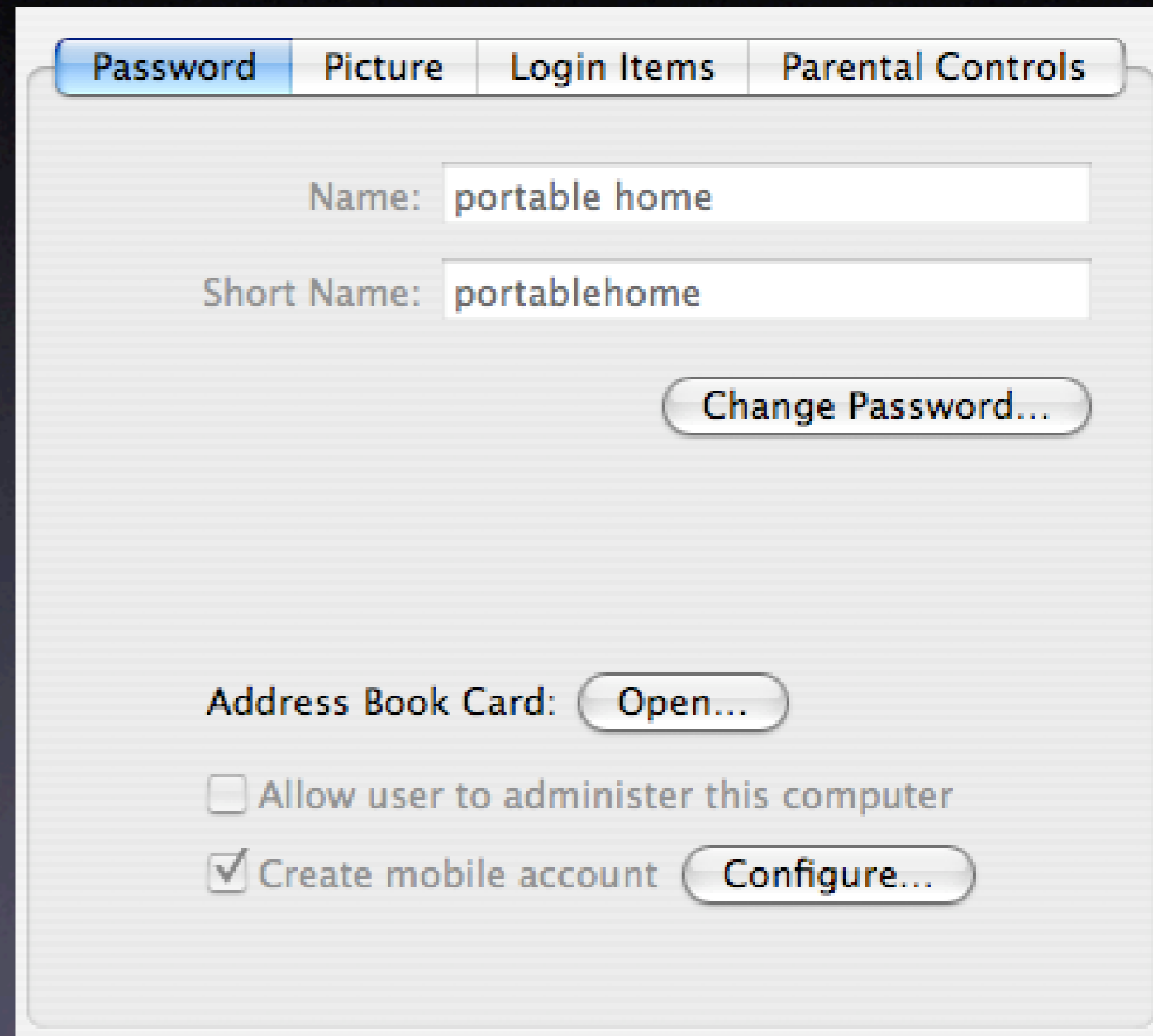
Sync Basics

- If you have a mobile account and a network defined home folder you can sync the homes
- Activate via the Sync menu or wait for the autosync



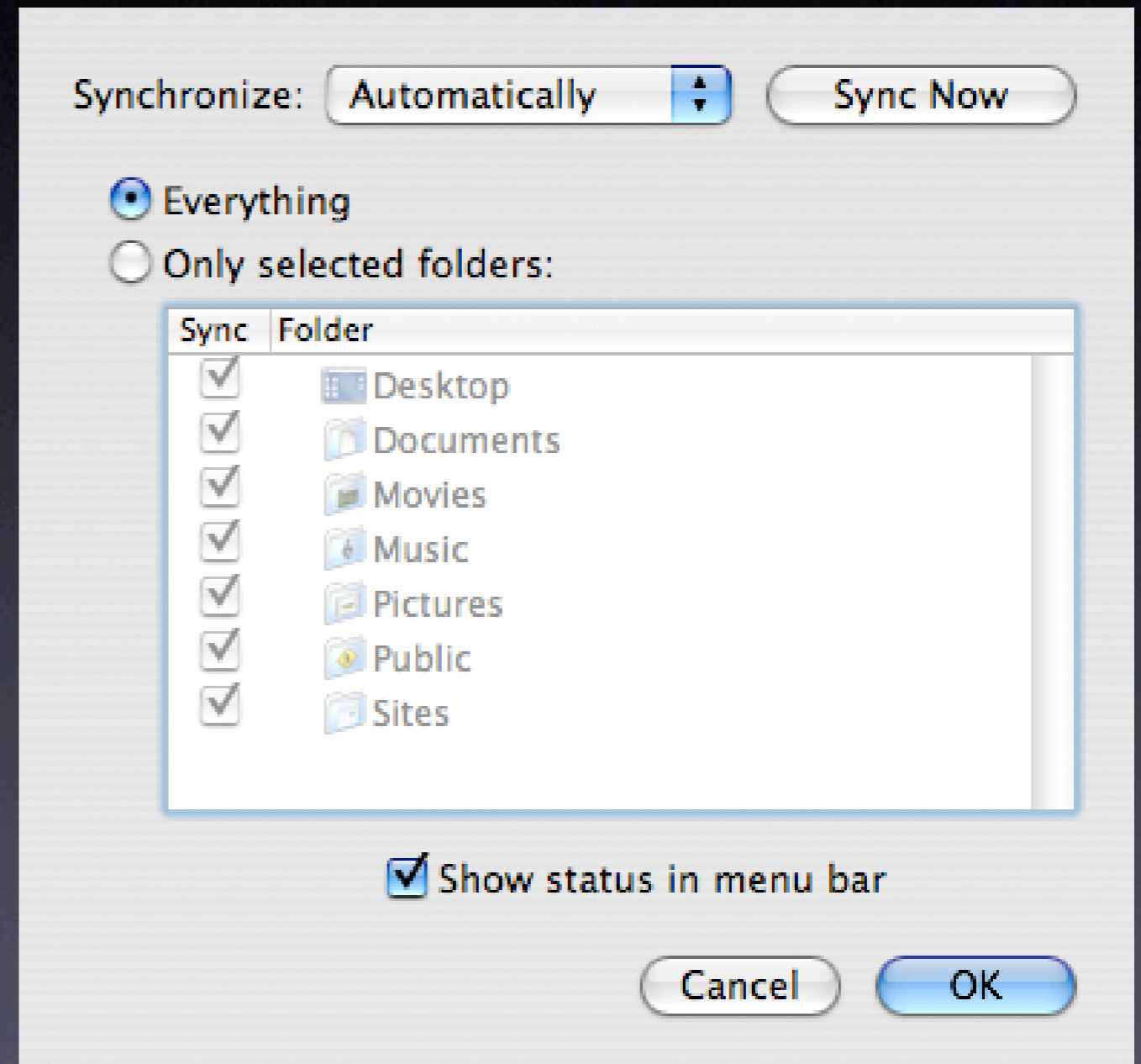
Sync Control

- You can set sync options locally in the Account preferences



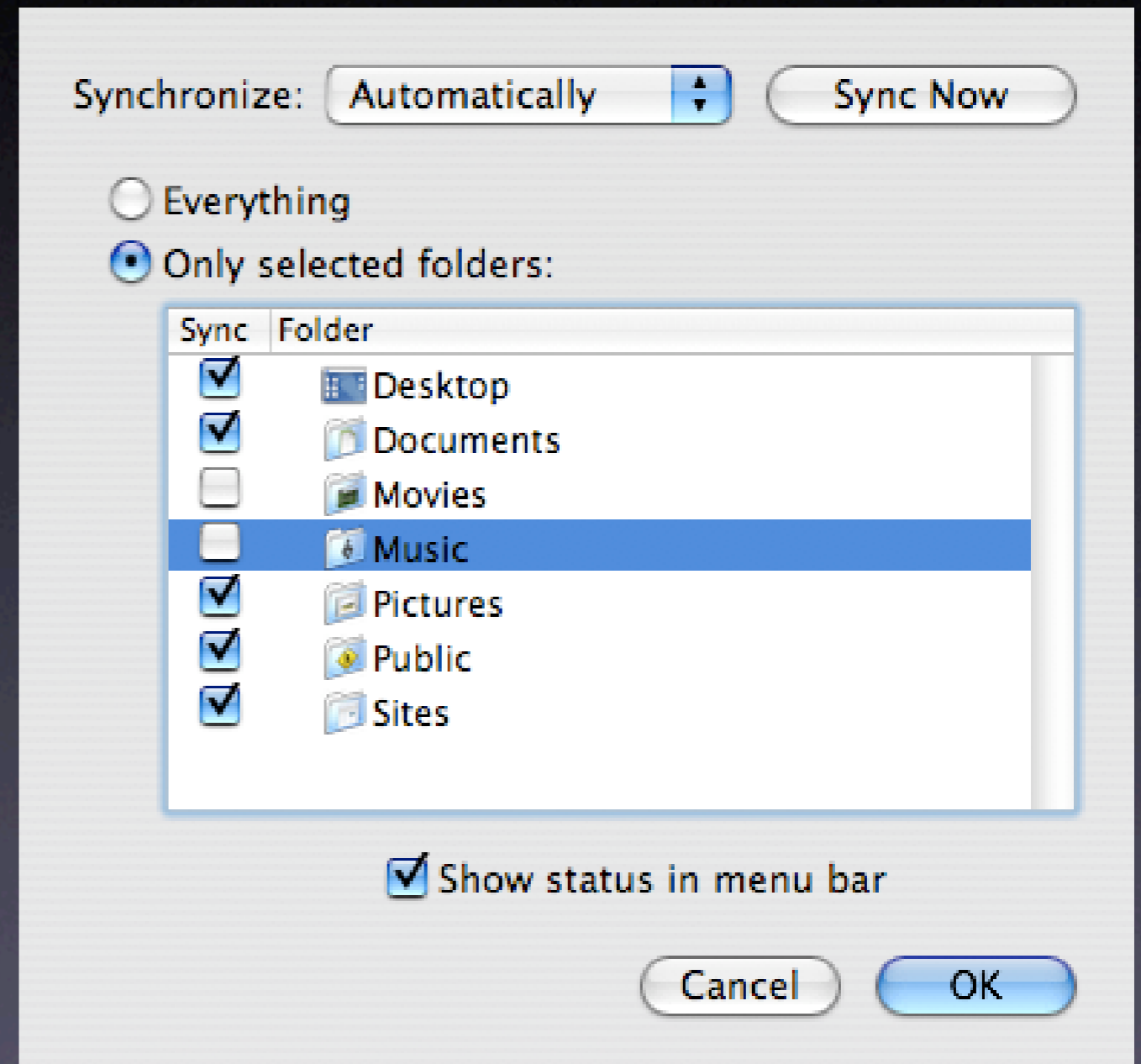
Sync Control

- You can set sync options locally in the Account preferences
- You can sync everything

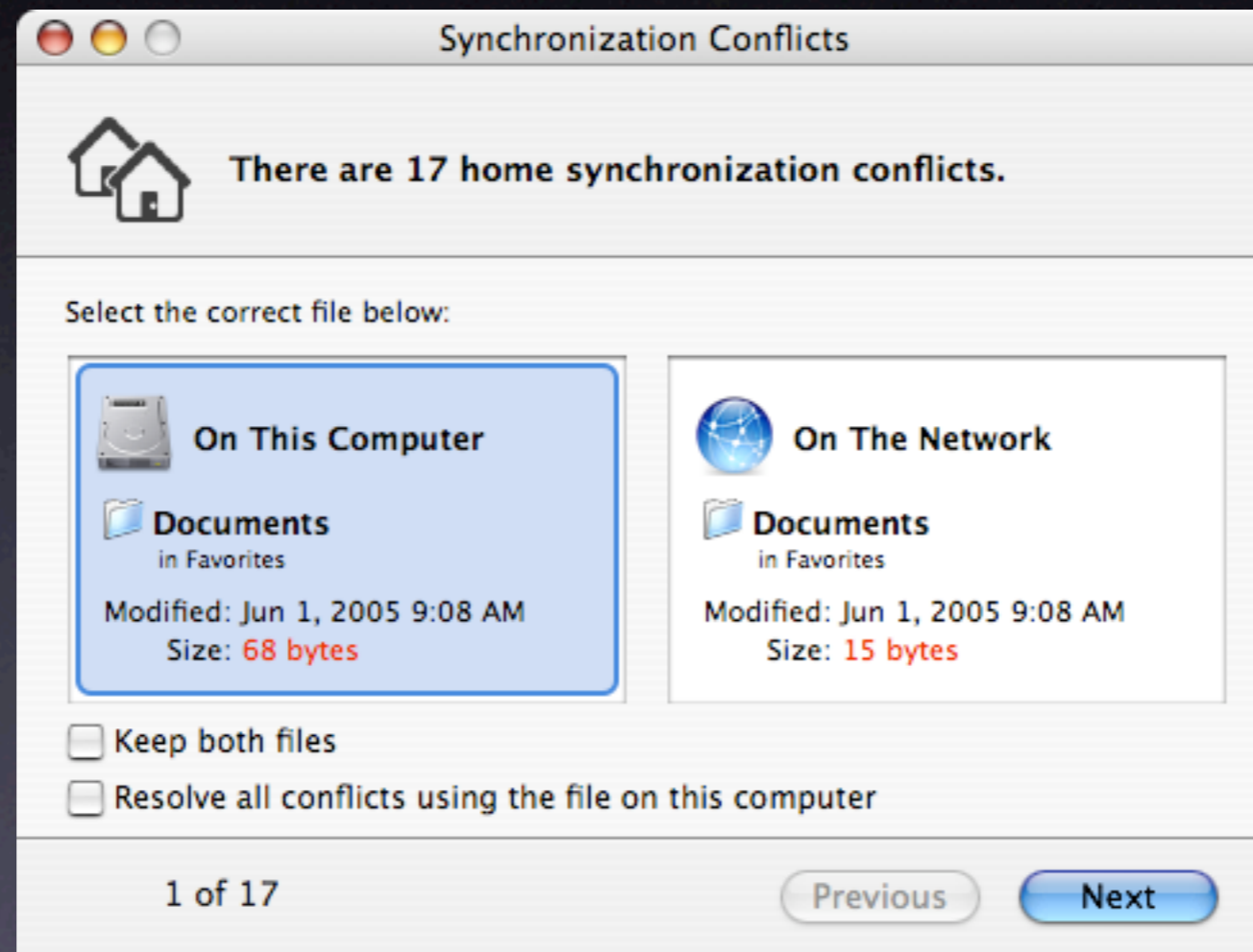


Sync Control

- You can set sync options locally in the Account preferences
- You can sync everything
- Or sync just what you want



Conflict Resolution



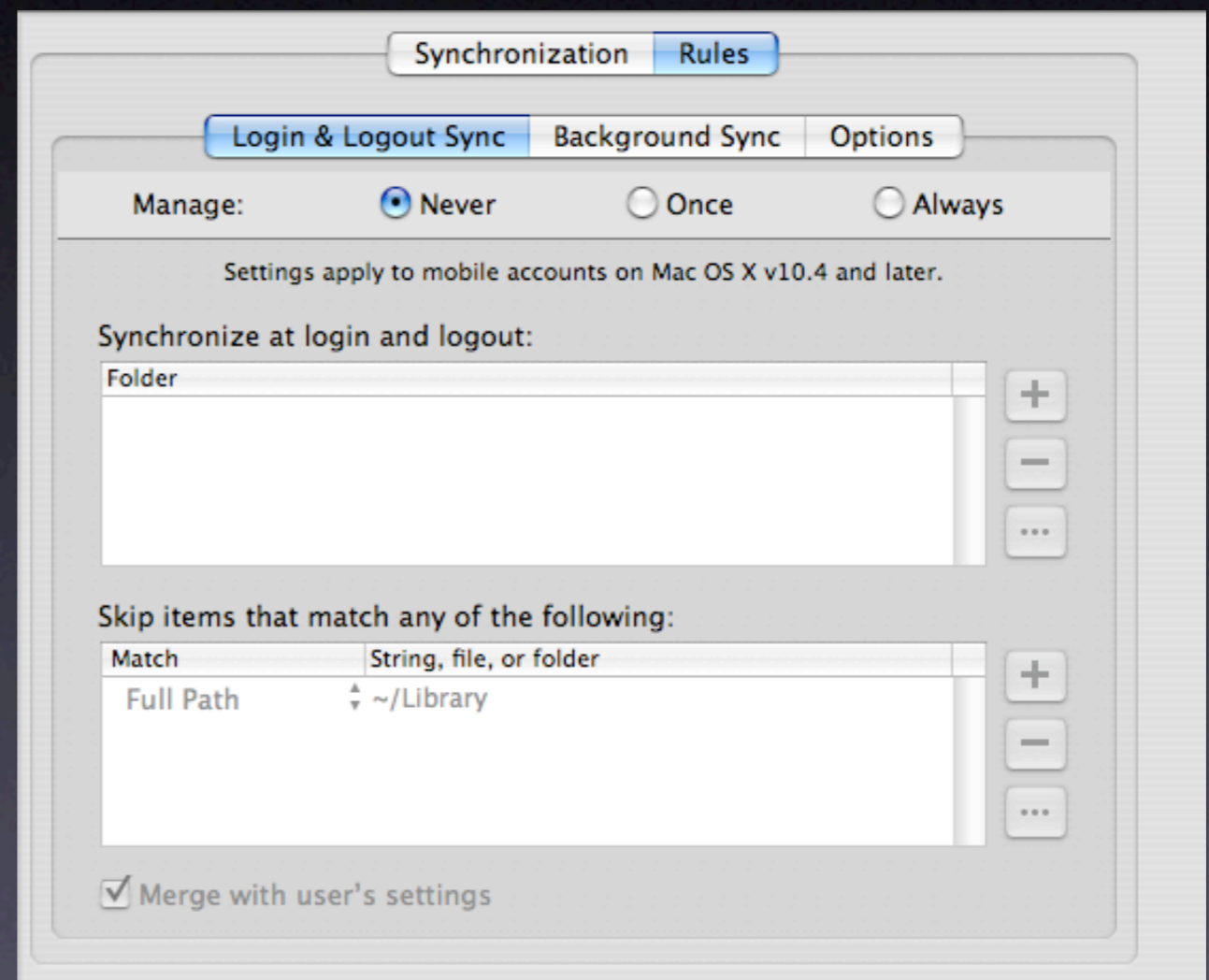
Managed Sync Control

- If you have an OD domain or an extended AD schema you can use mcx



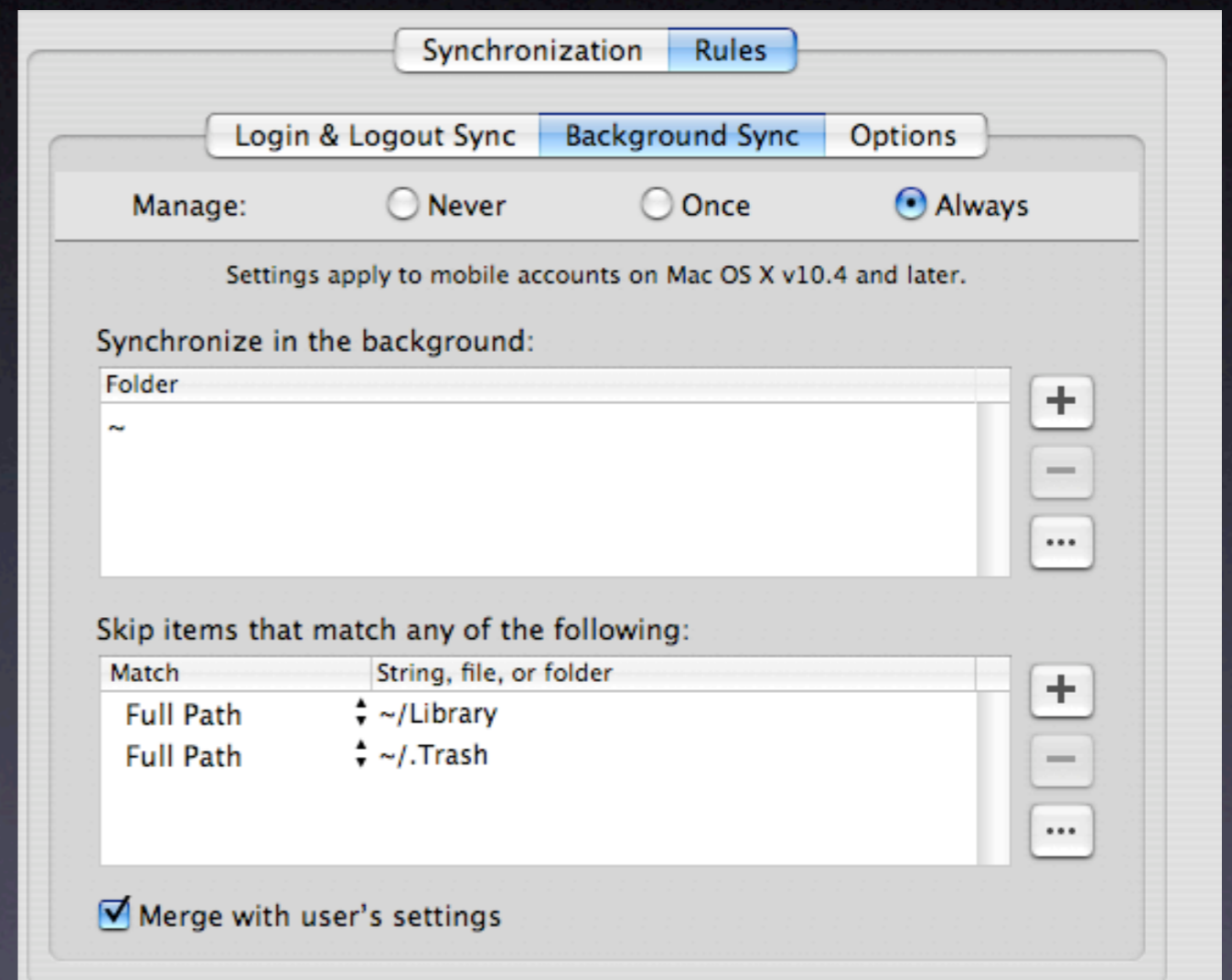
Managed Sync Control

- If you have an OD domain or an extended AD schema you can use mcx
- Two sync styles, Login & Logout Sync



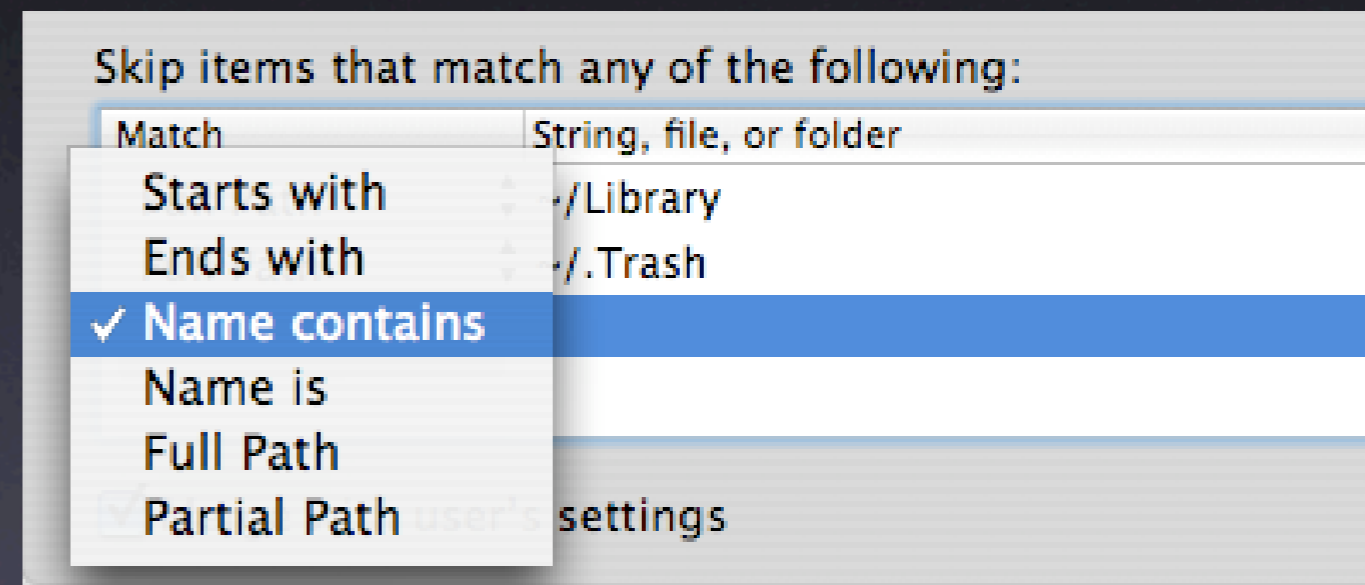
Managed Sync Control

- If you have an OD domain or an extended AD schema you can use mcx
- Two sync styles, Login & Logout Sync and Background Sync



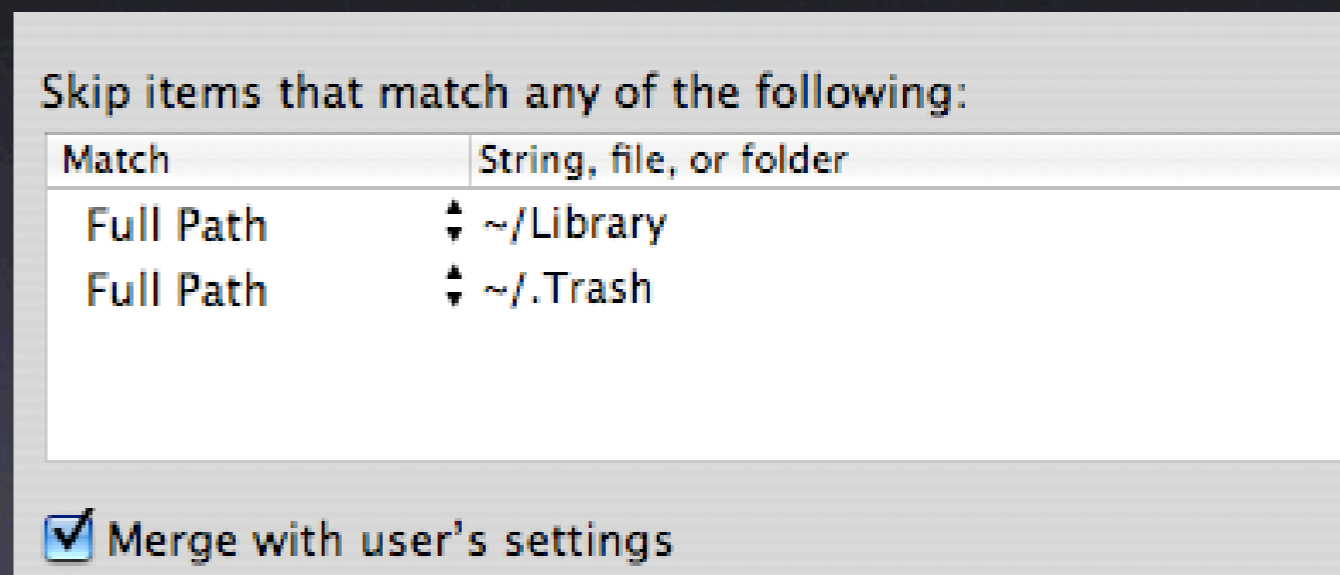
Managed Sync Control

- Notice that you can use rules to control what syncs



Managed Sync Control

- Notice that you can use rules to control what syncs
- Also notice that ~/Library is off by default
- This can't be enabled!



Managed Sync Control

- Background syncs can run on a schedule from ever 5 minutes to once an hour
- Base this schedule on the resource levels you have
- Note the option to override managed sync settings or merge them with the local settings



Managed Sync Control

- You can change the local sync interval in the homeSync preference domain

```
Terminal — bash — 80x24
dhcp172-21s10n78:~ portablehome$ defaults read com.apple.homeSync
{
    excludedItems = (
        {comparison = fullPath; value = "~/Library"; },
        {comparison = fullPath; value = "~/Trash"; }
    );
    excludedPrefItems = ({comparison = fullPath; value = "~/Library"; });
    periodicSyncOn = 1;
    syncPeriodSeconds = 1200;
    syncedFolders = ({path = "~/"; });
    syncedPrefFolders = ();
}
dhcp172-21s10n78:~ portablehome$ █
```


Sync Summary

- Mobile home syncing adds flexibility
 - For users with multiple Macs or even just as an easy backup method
- No mcx required
- ~/Library is not synced

Demo