



A Designer's Tour of QuarkXPress 7

Macworld Conference & Expo
San Francisco, CA
January 2006

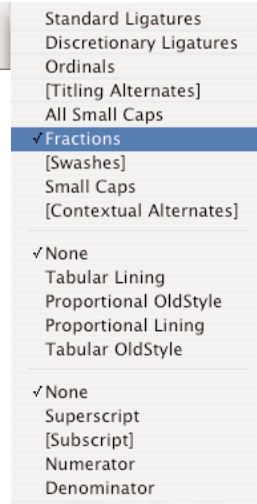
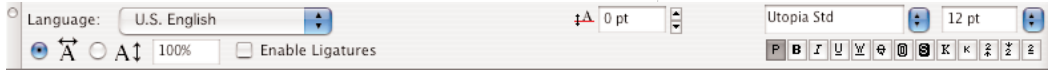
Presented by
Jay J. Nelson
Editor & Publisher
Design Tools Monthly™
www.design-tools.com

© Copyright 2006
Jay J. Nelson



OpenType features (“Character Sets” such as Small Caps)
 Fractions
 Extended ligatures
 Ligatures on-the-fly
 OpenType user interface
 Measurements Palette

NOTES



Style Sheets
 Glyph Palette
 Double-click to insert glyph
 Favorites: store favorite glyphs from any/all fonts. Stores and displays the font info when you mouse over the glyph. (Favorites lets you combine glyphs from any fonts)
 Special Characters now have glyphs (flex space, etc) so you can find/replace, and also drag them from Glyphs palette.
 OpenType settings (such as fractions) can apply to characters, words, stories, or be applied to Character & Paragraph Style Sheets, but NOT to entire document

Invisibles & Special Characters
 Utilities> Insert Character: Can insert Invisibles and special characters such as Indent Here, Page #, Nonbreaking Space, Discretionary New Line, Right Indent Tab, En-dash, Em-dash etc.
 Can see Invisibles as an Invisibles font designed by Ascender Corp. [MT])
 Glyphs palette also shows invisibles under “Special Characters”

Font Fallback
 Normally, when you import/paste text into document using one font that isn't same as original, unknown characters get replaced by empty boxes. Now, it's replaced by a font that QX7 deems appropriate for that character. The list is pre-made by Quark, but may be modifiable by the user in a later version of QuarkXPress. This feature is especially helpful for Asian, Hindu & Arabic fonts.

Non-Roman glyph input now supported in QX7. (Chinese, Korean, Japanese, Middle East, etc.)

In Passport, can now assign languages on a word-by-word basis (useful for spell checking)



Can also include Vista effects.

Retains picture attributes when replacing picture. So, you can synchronize empty boxes, then import photos. Great for catalogs and multi-media campaigns.

This is NOT like Adobe's object styles, which don't synchronize content.

Shared Content

Replaces the old Library

Shared Content palette controls what gets synchronized across items. You can also drag items from the palette to the page.

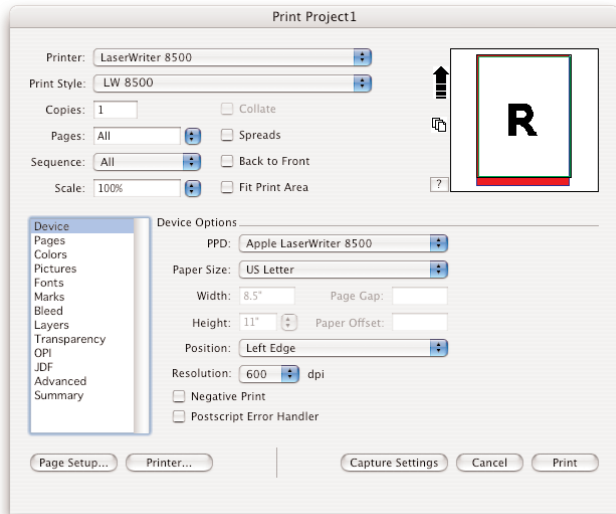
You can change a shared item's attributes directly from the Shared Content palette, without having to track down an instance of that item in the Project.

You can use the Shared Content palette's Browse button to import pictures or text directly into the Shared Content palette without having to first import it into a box.

Share Content across Layouts within a Project, but not across Projects.

Output Enhancements

Print Dialog:



Instead of a horizontal row of Tabs (as in QX6), options appear in a scrolling column of categories on left side (like Adobe products)

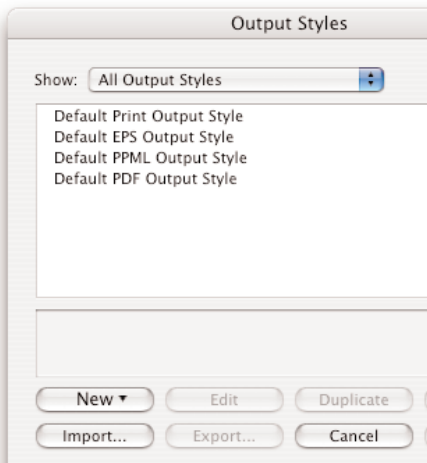
Create Print Style within Print Dialog. (Instead of Edit> Print Style...)

Can also save Export options as Output Styles for EPS, PDF

Can now embed fonts in exported EPSes

NOTES

A series of horizontal lines provided for taking notes.





Transparency Flattening asks for DPI, rather than using an ambiguous slider

Can choose to NOT download fonts, instead using built-in fonts in printer. Good for OpenType large fonts.

View> Proof Output, choose any color setting (gray, in-rip seps, your press's setup) and preview all the elements on the page, including previews of imported photos.

You can use an RGB workflow now (unlike in QX6), and QX7 will preview in those colors, based on the ICC profile chosen in the Job Jacket or from a menu. When printing, all colors will output correctly. You can even choose to use the QX4, 5 or 6 color management system, if you need to match a legacy job.

PDF/X:

QX7 can check your document at open, save, close, or quit and warn you for PDF/X errors at those times, rather than only when you're dying to print.

The PDF/X-checking engine is from Callas Software, who created the accepted standards around the world.

Collaboration

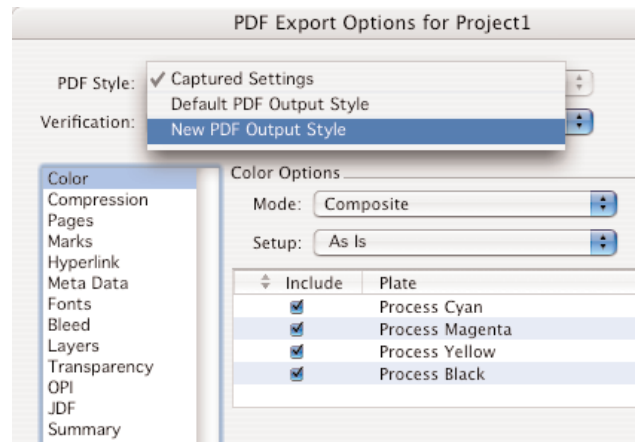
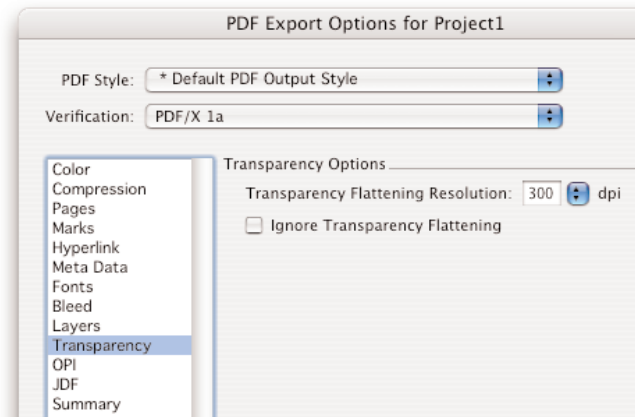
Shared Layouts

This Project Only vs. All Projects: lets you use one layout as a graphical resource elsewhere (CD cover used on poster vs. CD cover used by someone else on their posters; or use magazine cover(s) on another thing (ad); you design in readers' spreads while someone else is working in Printers' spreads.

Composition Zones

Little brother of Shared Layouts: share a subset of a layout. Collaborative workspace that allows multiple people to contribute work to the same Project. (Trevor Allen's X-Ray article on Composition Zones.)

Use the Marquee tool from the Tool palette to define composition zones. Or Item> Composition Zone> Create. You then can't edit that zone, but in Shared Content palette, can add it as shared item. Choose "Make External" in Shared Item dialog, put zone on server or email to someone. Take a trip. Others update zone. You return and zone updates on your Layout. If emailed, then must place the returned file in the same location where it came from. QX will then automatically update the main project.



NOTES

A series of horizontal lines provided for taking notes, starting below the 'NOTES' header and extending to the bottom of the page.

